

# ABB BALDOR RELIANCE III

---

## Customer information packet

L1511T

10HP, 3450RPM, 1PH, 60HZ, 215T, 3740L, OPEN, F1

Class - None

Division - Not Applicable

**Specifications**

<b>Enclosure</b>	OPEN
<b>Frame</b>	215T
<b>Frame Material</b>	Steel
<b>Frequency</b>	60.00 Hz
<b>Haz Area Class and Group</b>	None
<b>Haz Area Division</b>	Not Applicable
<b>Motor Letter Type</b>	Cap Start, Induction Run
<b>Output @ Frequency</b>	10.000 HP @ 60 HZ
<b>Phase</b>	1
<b>Synchronous Speed @ Frequency</b>	3600 RPM @ 60 HZ
<b>Voltage @ Frequency</b>	230.0 V @ 60 HZ
<b>Agency Approvals</b>	C UR US
<b>Ambient Temperature</b>	40 °C
<b>Auxiliary Box</b>	NO AUXILLARY BOX
<b>Auxiliary Box Lead Termination</b>	None
<b>Base Indicator</b>	Rigid
<b>Bearing Grease Type</b>	Polyrex EM (-20F +300F)
<b>Blower</b>	None
<b>Current @ Voltage</b>	46.000 A @ 230.0 V 48.000 A @ 208.0 V
<b>Design Code</b>	L
<b>Drip Cover</b>	No Drip Cover
<b>Duty Rating</b>	CONT
<b>Efficiency @ 100% Load</b>	83.0 %
<b>Electrically Isolated Bearing</b>	Not Electrically Isolated
<b>Feedback Device</b>	NO FEEDBACK
<b>Front Face Code</b>	Standard
<b>Front Shaft Indicator</b>	None
<b>Heater Indicator</b>	No Heater
<b>High Voltage Full Load Amps</b>	46.0 a
<b>Insulation Class</b>	F
<b>Inverter Code</b>	Not Inverter

**Part Detail**

<b>Revision</b>	M
<b>Type</b>	AC
<b>Mech. spec.</b>	37K267
<b>Base</b>	
<b>Status</b>	PRD/A
<b>Elec. spec.</b>	37WGX047
<b>Layout</b>	37LYK267
<b>Eff. date</b>	05-13-2024
<b>CD Diagram</b>	CD0017A01
<b>Poles</b>	02
<b>Leads</b>	2#8 A PH,2#14 B PH
<b>Proprietary</b>	False
<b>Created date</b>	03-08-2007

<b>KVA Code</b>	G
<b>Lifting Lugs</b>	Standard Lifting Lugs
<b>Locked Bearing Indicator</b>	No Locked Bearing
<b>Motor Lead Exit</b>	Ko Box
<b>Motor Lead Quantity/Wire Size</b>	2 @ 8 AWG, A PH
<b>Motor Lead Termination</b>	Flying Leads
<b>Motor Standards</b>	NEMA
<b>Motor Type</b>	3740L
<b>Mounting Arrangement</b>	F1
<b>Number of Poles</b>	2
<b>Overall Length</b>	17.45 IN
<b>Power Factor</b>	86
<b>Product Family</b>	General Purpose
<b>Pulley End Bearing Type</b>	Ball
<b>Pulley Face Code</b>	Standard
<b>Pulley Shaft Indicator</b>	Standard
<b>Rodent Screen</b>	None
<b>Service Factor</b>	1.15
<b>Shaft Diameter</b>	1.375 IN
<b>Shaft Extension Location</b>	Pulley End
<b>Shaft Ground Indicator</b>	No Shaft Grounding
<b>Shaft Rotation</b>	Reversible
<b>Shaft Slinger Indicator</b>	No Slinger
<b>Speed</b>	3450 rpm
<b>Speed Code</b>	Single Speed
<b>Starting Method</b>	Direct on line
<b>Thermal Device - Bearing</b>	None
<b>Thermal Device - Winding</b>	None
<b>Vibration Sensor Indicator</b>	No Vibration Sensor
<b>Winding Thermal 1</b>	None
<b>Winding Thermal 2</b>	None

**Nameplate**

<b>NP1256L</b>										
<b>CAT.NO.</b>	L1511T									
<b>SPEC.</b>	37K267X047G1									
<b>HP</b>	10									
<b>VOLTS</b>	230									
<b>AMP</b>	46									
<b>RPM</b>	3450									
<b>FRAME</b>	215T		<b>HZ</b>	60			<b>PH</b>	1		
<b>SER.F.</b>	1.15	<b>CODE</b>	G	<b>DES</b>	L	<b>CLASS</b>	F			
<b>NEMA-NOM-EFF</b>	83	<b>PF</b>	86							
<b>RATING</b>	40C AMB-CONT									
<b>CC</b>										
<b>DE</b>	6307		<b>ODE</b>	6206						
<b>ENCL</b>	OPEN	<b>SN</b>								

**Accessories**

<b>Part number</b>	<b>Description</b>	<b>Multiplier</b>
37-1404	C FACE KIT	A8

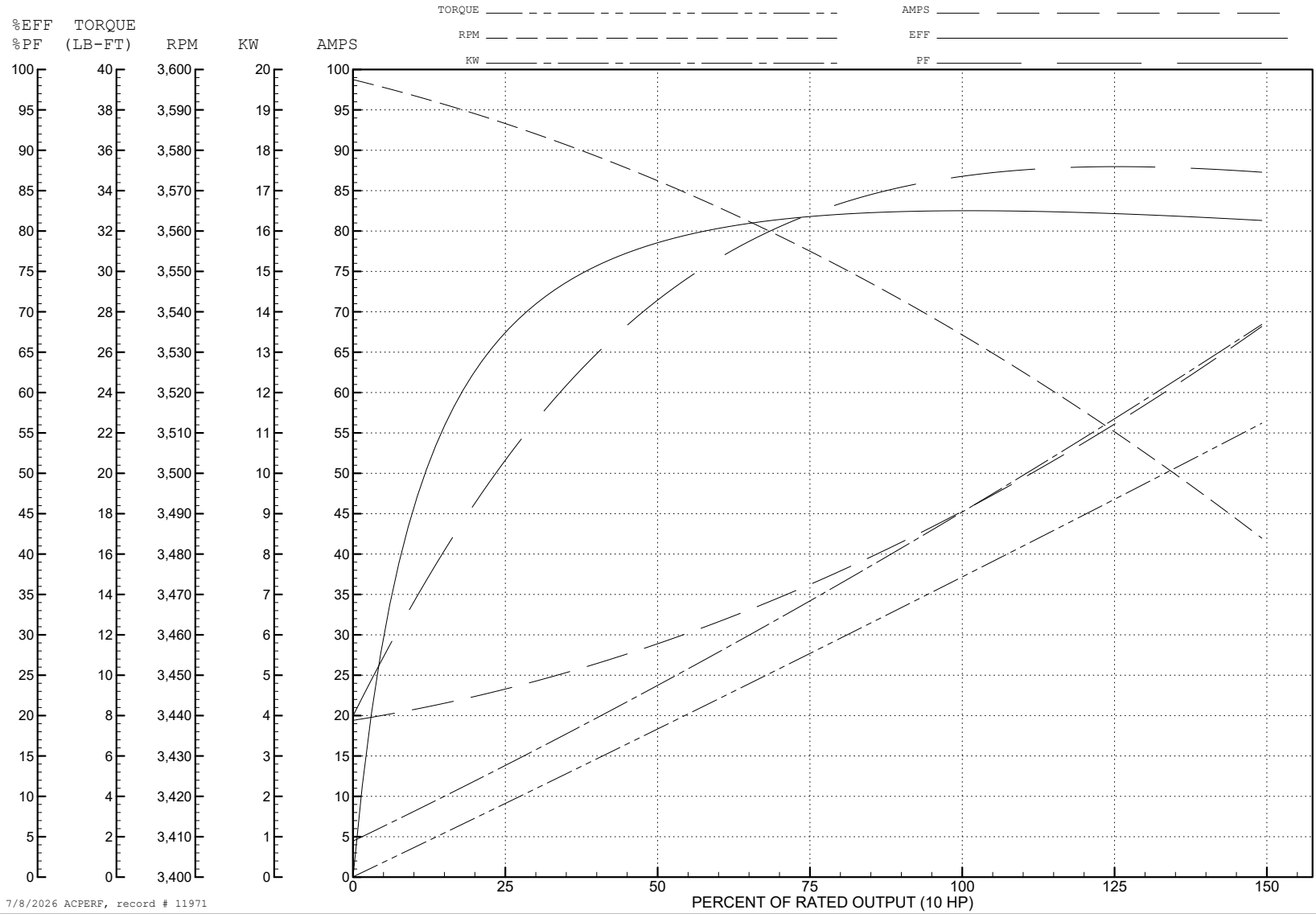
ABB Motors and Mechanical Inc.

WINDING # 37WGX047

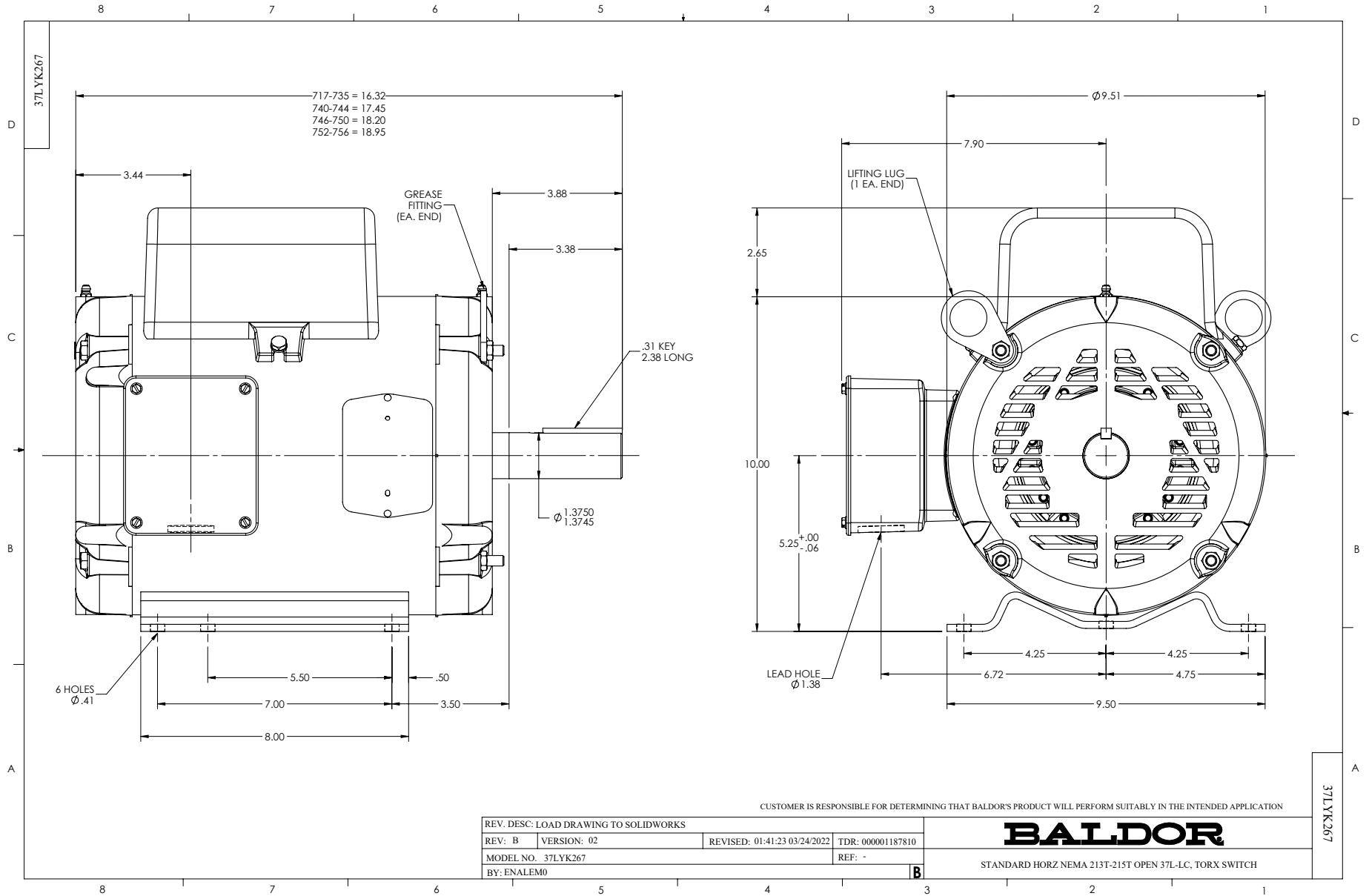
Typical performance - not guaranteed values.

10 HP 1 PH 60 HZ 3450 RPM 230 V 3740L

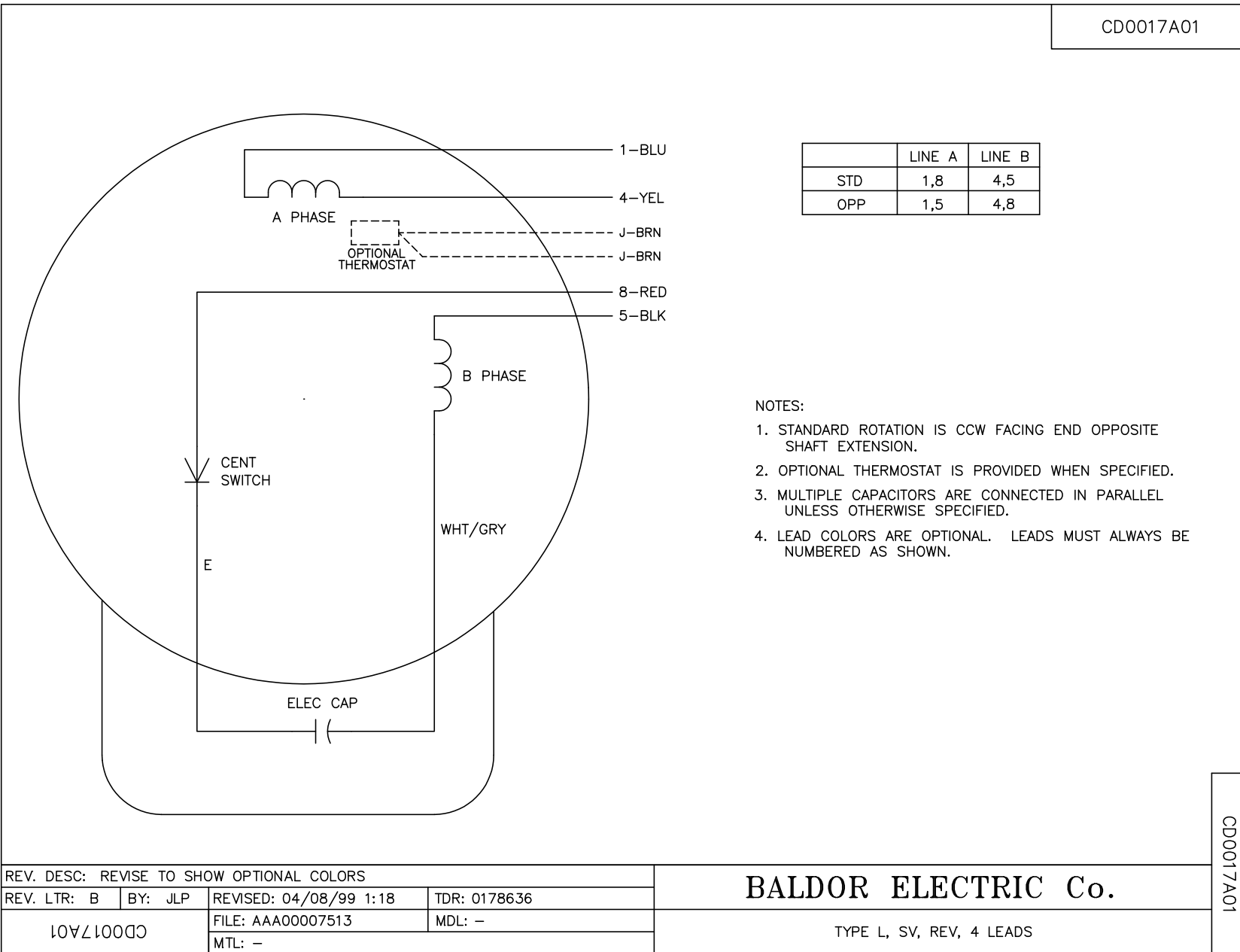
TORQUES (LB-FT): PO=46.4 PU=27.6 LR=30.6 LRA=280



7/8/2026 ACPERF, record # 11971



CD0017A01



	LINE A	LINE B
STD	1,8	4,5
OPP	1,5	4,8

- NOTES:
1. STANDARD ROTATION IS CCW FACING END OPPOSITE SHAFT EXTENSION.
  2. OPTIONAL THERMOSTAT IS PROVIDED WHEN SPECIFIED.
  3. MULTIPLE CAPACITORS ARE CONNECTED IN PARALLEL UNLESS OTHERWISE SPECIFIED.
  4. LEAD COLORS ARE OPTIONAL. LEADS MUST ALWAYS BE NUMBERED AS SHOWN.

CD0017A01

REV. DESC: REVISE TO SHOW OPTIONAL COLORS			
REV. LTR: B	BY: JLP	REVISED: 04/08/99 1:18	TDR: 0178636
10VZ1000		FILE: AAA00007513	MDL: -
CD0017A01		MTL: -	

**BALDOR ELECTRIC Co.**

TYPE L, SV, REV, 4 LEADS