

ABB BALDOR RELIANCE III

Customer information packet

L1508T-50

5/3.7KW, 1450RPM, 1PH, 50HZ, 213T, 3740LC, OPS

Class - None

Division - Not Applicable

Specifications

Enclosure	OPSB
Frame	213T
Frame Material	Steel
Frequency	50.00 Hz
Haz Area Class and Group	None
Haz Area Division	Not Applicable
Motor Letter Type	Cap Start, Cap Run
Output @ Frequency	3.700 KW @ 50 HZ
Phase	1
Synchronous Speed @ Frequency	1500 RPM @ 50 HZ
Voltage @ Frequency	220.0 V @ 50 HZ
Agency Approvals	C UR US WEEE UKCA CURUS CE
Ambient Temperature	40 °C
Auxiliary Box	NO AUXILLARY BOX
Auxiliary Box Lead Termination	None
Base Indicator	Rigid
Bearing Grease Type	Polyrex EM (-20F +300F)
Blower	None
Current @ Voltage	20.400 A @ 220.0 V
Design Code	-
Drip Cover	No Drip Cover
Duty Rating	CONT
Efficiency @ 100% Load	86.3 %
Electrically Isolated Bearing	Not Electrically Isolated
Feedback Device	NO FEEDBACK
Front Shaft Indicator	None
Heater Indicator	No Heater
High Voltage Full Load Amps	20.4 a

Part Detail

Revision	C
Type	AC
Mech. spec.	37K214
Base	
Status	PRD/A
Elec. spec.	37WGQ165
Layout	37LYK214
Eff. date	05-13-2024
CD Diagram	CD0017A02
Poles	04
Leads	2#12 A PH,2#14 B PH
Proprietary	False
Created date	10-03-2023

Insulation Class	F
Inverter Code	Not Inverter
KVA Code	G
Lifting Lugs	Standard Lifting Lugs
Locked Bearing Indicator	No Locked Bearing
Motor Lead Quantity/Wire Size	2 @ 12 AWG, A PH
Motor Lead Termination	Flying Leads
Motor Standards	NEMA
Motor Type	3740LC
Mounting Arrangement	F1
Number of Poles	4
Overall Length	18.20 IN
Power Factor	96
Product Family	General Purpose
Pulley End Bearing Type	Ball
Pulley Face Code	Standard
Pulley Shaft Indicator	Standard
Rodent Screen	None
RoHS Status	ROHS COMPLIANT
Service Factor	1.00
Shaft Diameter	1.375 IN
Shaft Ground Indicator	No Shaft Grounding
Shaft Rotation	Reversible
Shaft Slinger Indicator	No Slinger
Speed	1450 rpm
Speed Code	Single Speed
Starting Method	Direct on line
Thermal Device - Bearing	None
Thermal Device - Winding	None
Vibration Sensor Indicator	No Vibration Sensor
Winding Thermal 1	None
Winding Thermal 2	None

Nameplate

NP1372L									
CAT.NO.	L1508T-50								
SPEC.	37K214Q165								
HP	5/3.7KW								
VOLTS	220								
AMP	20.4								
R.P.M. (1/MIN)	1450								
FRAME	213T		HZ	50		PH	1		
SER.F.	1.00	CODE	G	DES	-	CL	F		
NEMA-NOM-EFF	86.3	PF	96						
RATING	40C AMB-S1 CONT								
CC			IP23 IC01 15KG						
DE	6307		ODE	6206					
ENCL	OPSB	SN							
	IE2-50HZ 86(75%),83(50%)								

Accessories

Part number	Description	Multiplier
37-1404	C FACE KIT	A8

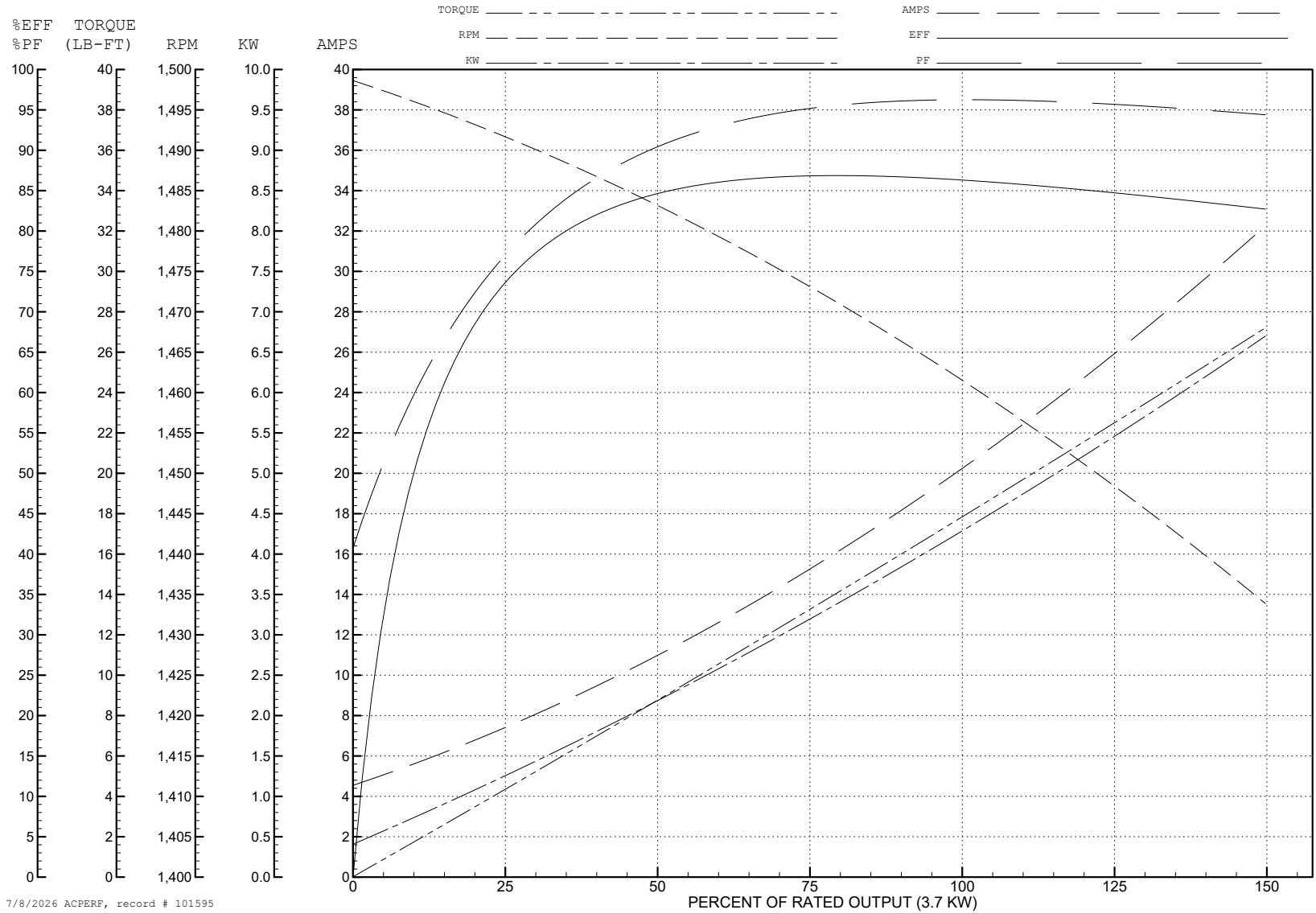
ABB Motors and Mechanical Inc.

WINDING # 37WGQ165

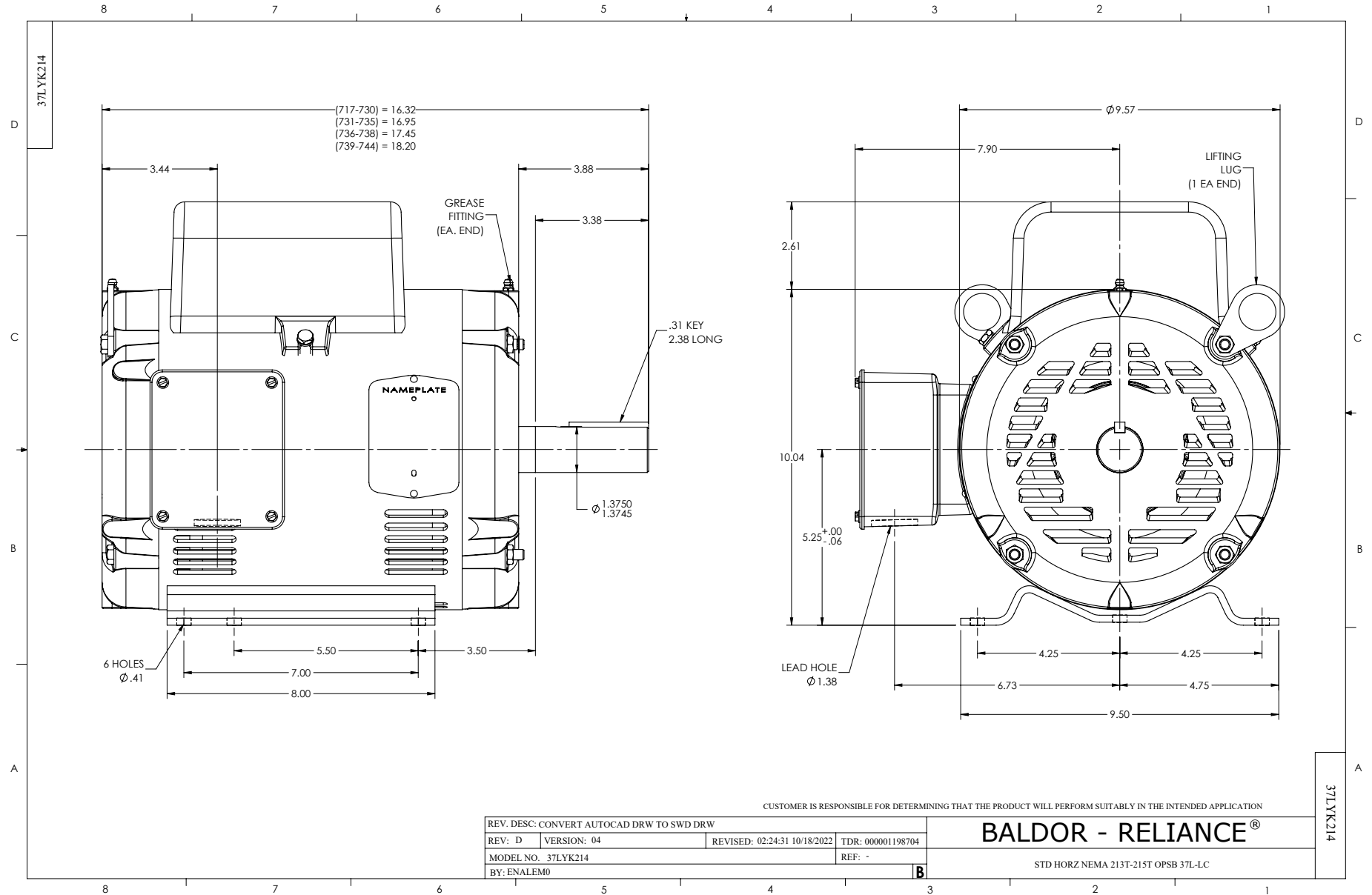
3.7 KW 1 PH 50 HZ 1450 RPM 220 V 3740LC

Typical performance - not guaranteed values.

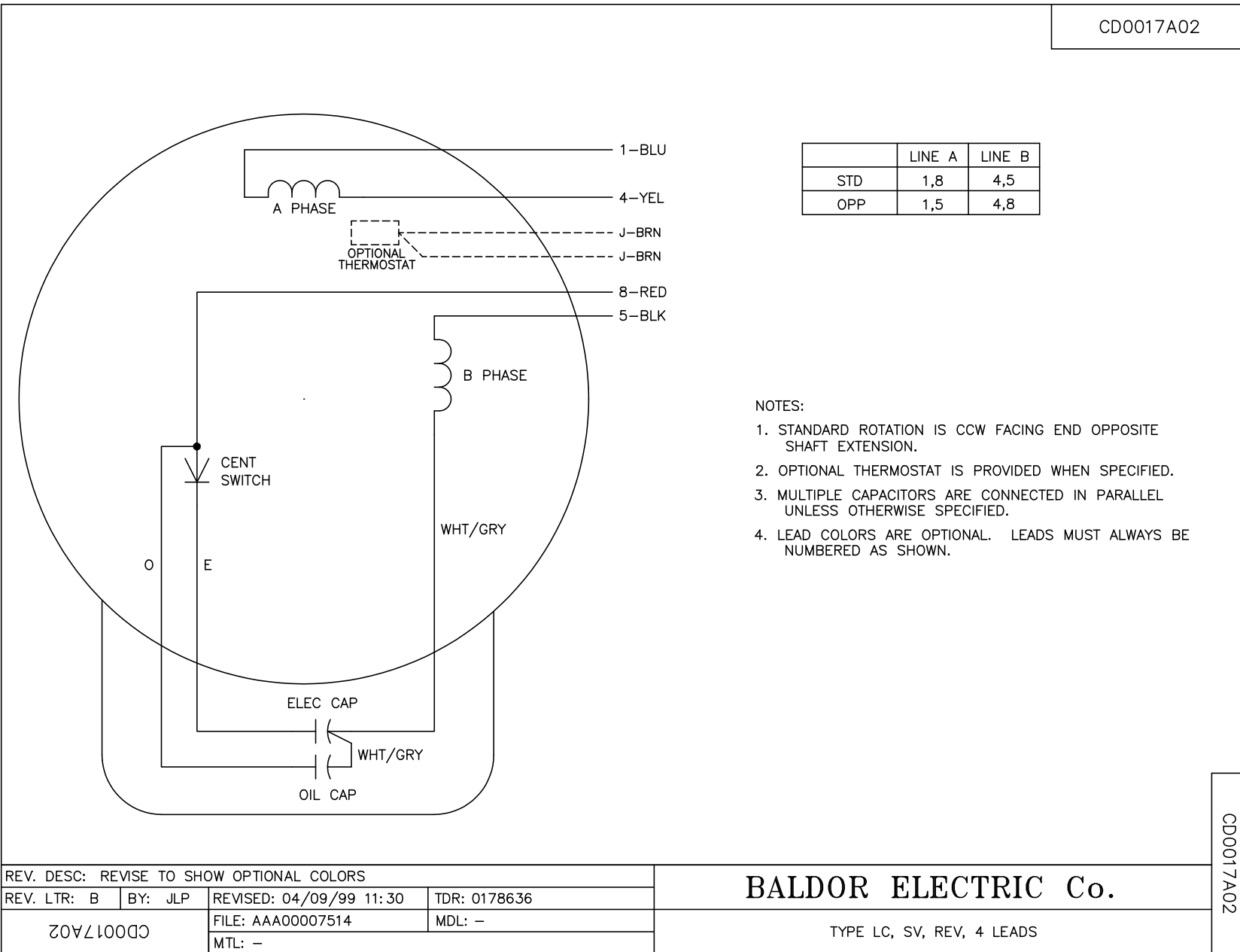
TORQUES (LB-FT): PO=53.5 PU=26.2 LR=37.7 LRA=136



7/8/2026 ACPERF, record # 101595



CD0017A02



CD0017A02

REV. DESC: REVISE TO SHOW OPTIONAL COLORS			
REV. LTR: B	BY: JLP	REVISED: 04/09/99 11:30	TDR: 0178636
CD0017A02		FILE: AAA00007514	MDL: -
		MTL: -	

BALDOR ELECTRIC Co.

TYPE LC, SV, REV, 4 LEADS