



---

# Customer information packet

## L1430TM

5HP, 1725RPM, 1PH, 60HZ, 184T, 3634LC, ODTF

Class - None

Division - Not Applicable

## Specifications

Enclosure	ODTF
Frame	184T
Frame Material	Steel
Frequency	60.00 Hz
Motor Letter Type	Cap Start, Cap Run
Output @ Frequency	5.000 HP @ 60 HZ
Phase	1
Synchronous Speed @ Frequency	1800 RPM @ 60 HZ
Voltage @ Frequency	230.0 V @ 60 HZ
XP Class and Group	None
XP Division	Not Applicable
Agency Approvals	UR CSA
Ambient Temperature	40 °C
Auxillary Box	No Auxillary Box
Auxillary Box Lead Termination	None
Base Indicator	Rigid
Bearing Grease Type	Polyrex EM (-20F +300F)
Blower	None
Current @ Voltage	24.000 A @ 230.0 V 25.500 A @ 208.0 V
Design Code	L
Drip Cover	Drip Cover
Duty Rating	CONT
Efficiency @ 100% Load	80.0 %
Electrically Isolated Bearing	Not Electrically Isolated
Feedback Device	NO FEEDBACK
Front Face Code	Standard
Front Shaft Indicator	None
Heater Indicator	No Heater
High Voltage Full Load Amps	24.0 a
Insulation Class	F

## Part detail

Revision	V
Type	AC
Mech. spec.	36K761
Base	
Status	PRD/A
Elec. spec.	36WGX262
Layout	36LYK761
Eff. date	05-20-2020
CD Diagram	CD0002A02
Poles	04
Leads	2#10 A PH,3#16 B&J
Proprietary	False
Created date	01-01-0001

<b>Inverter Code</b>	Not Inverter
<b>KVA Code</b>	H
<b>Lifting Lugs</b>	No Lifting Lugs
<b>Locked Bearing Indicator</b>	No Locked Bearing
<b>Motor Lead Exit</b>	Ko Box
<b>Motor Lead Quantity/Wire Size</b>	2 @ 10 AWG, A PH
<b>Motor Lead Termination</b>	Flying Leads
<b>Motor Standards</b>	NEMA
<b>Motor Type</b>	3634LC
<b>Mounting Arrangement</b>	F1
<b>Number of Poles</b>	4
<b>Overall Length</b>	16.55 IN
<b>Power Factor</b>	86
<b>Product Family</b>	General Purpose
<b>Pulley End Bearing Type</b>	Ball
<b>Pulley Face Code</b>	Standard
<b>Pulley Shaft Indicator</b>	Standard
<b>Rodent Screen</b>	None
<b>Service Factor</b>	1.15
<b>Shaft Diameter</b>	1.125 IN
<b>Shaft Extension Location</b>	Pulley End
<b>Shaft Ground Indicator</b>	No Shaft Grounding
<b>Shaft Rotation</b>	Reversible
<b>Shaft Slinger Indicator</b>	No Slinger
<b>Speed</b>	1725 rpm
<b>Speed Code</b>	Single Speed
<b>Starting Method</b>	Direct on line
<b>Thermal Device - Bearing</b>	None
<b>Thermal Device - Winding</b>	Do Not Use
<b>Vibration Sensor Indicator</b>	No Vibration Sensor
<b>Winding Thermal 1</b>	Manual Thermal Overload
<b>Winding Thermal 1 Location</b>	KO
<b>Winding Thermal 2</b>	None

**Nameplate**

<b>NP1257L</b>									
<b>CAT.NO.</b>	L1430TM								
<b>SPEC.</b>	36K761X262G1								
<b>HP</b>	5								
<b>VOLTS</b>	230								
<b>AMP</b>	24								
<b>RPM</b>	1725								
<b>FRAME</b>	184T		<b>HZ</b>	60		<b>PH</b>	1		
<b>SER.F.</b>	1.15	<b>CODE</b>	H	<b>DES</b>	L	<b>CL</b>	F		
<b>NEMA-NOM-EFF</b>	80	<b>PF</b>	86						
<b>RATING</b>	40C AMB-CONT								
<b>CC</b>				<b>USABLE AT 208V</b>			25.5		
<b>DE</b>	6206	<b>ODE</b>	6205						
<b>ENCL</b>	ODTF	<b>SN</b>							

**Accessories**

<b>Part number</b>	<b>Description</b>	<b>Multiplier</b>
36-3403	C FACE KIT	A8
36EP1405A09SP	D-FLANGE KIT	A8

**AC Induction Motor Performance Data**

Record # 20866

Typical performance - not guaranteed values

Winding: 36WGX262-R003		Type: 3634LC		Enclosure: ODTF	
<b>Nameplate Data</b>			<b>230 V, 60 Hz: Single Voltage Motor</b>		
Rated Output (HP)	5	Full Load Torque	15.2 LB-FT		
Volts	230	Start Configuration	direct on line		
Full Load Amps	24	Breakdown Torque	35 LB-FT		
R.P.M.	1725	Pull-up Torque	29 LB-FT		
Hz	60	Phase	1	Locked-rotor Torque	36 LB-FT
NEMA Design Code	L	KVA Code	H	Starting Current	137 A
Service Factor (S.F.)	1.15	No-load Current	8.2 A		
NEMA Nom. Eff.	80	Power Factor	86	Line-line Res. @ 25°C	0.494 Ω A Ph 1.73 Ω B Ph
Rating - Duty	40C AMB-CONT		Temp. Rise @ Rated Load	84°C	
S.F. Amps			Temp. Rise @ S.F. Load	102°C	

**Load Characteristics 230 V, 60 Hz, 5 HP**

% of Rated Load	25	50	75	100	125	150	S.F.
Power Factor	63	79	87	90	91	90	0
Efficiency	63.7	76.5	80.3	80.6	78.7	74.5	0
Speed	1784	1768	1751	1730	1704	1667	0
Line amperes	10.1	13.4	17.5	22.5	28.5	36.3	26.1

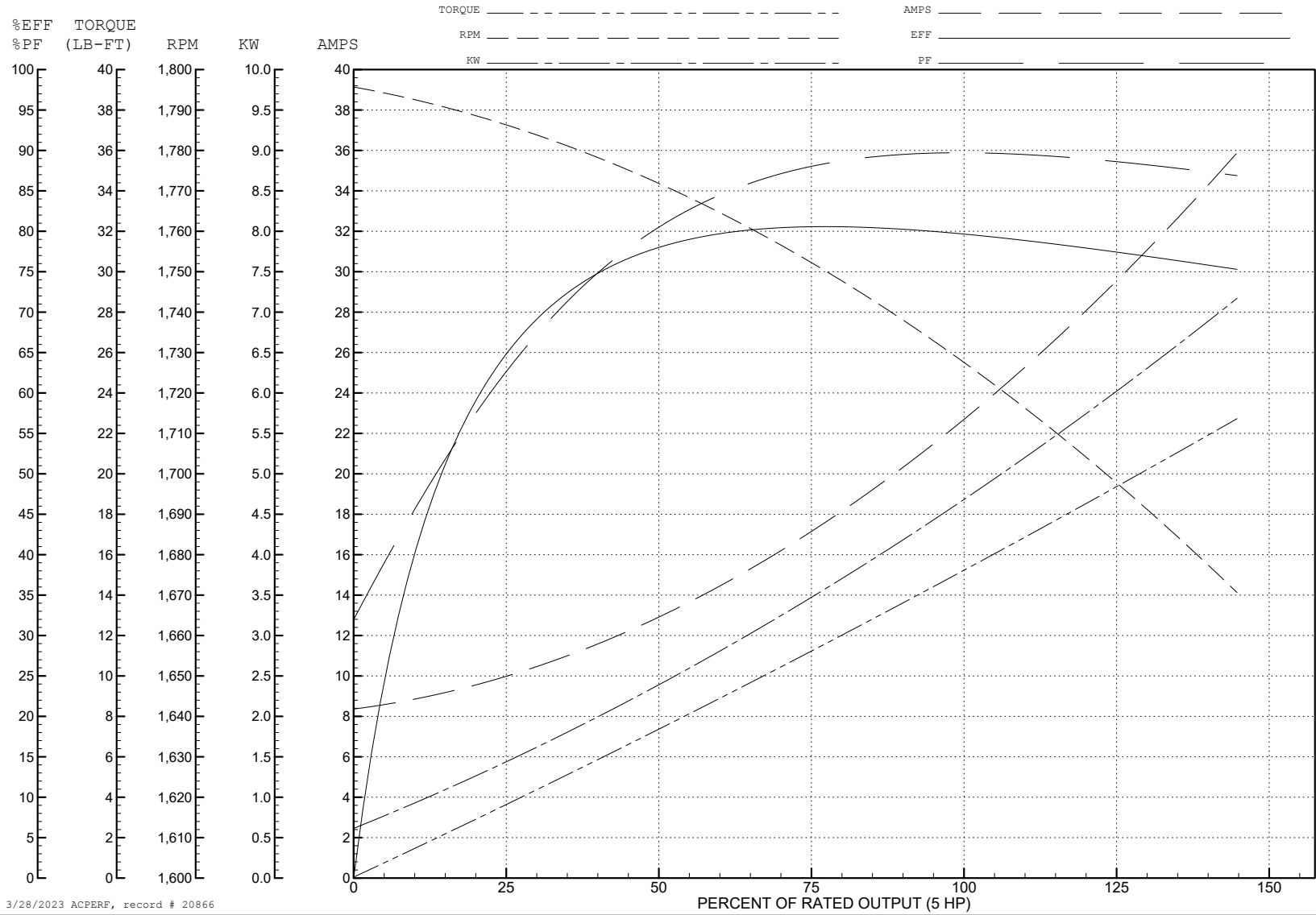
ABB Motors and Mechanical Inc.

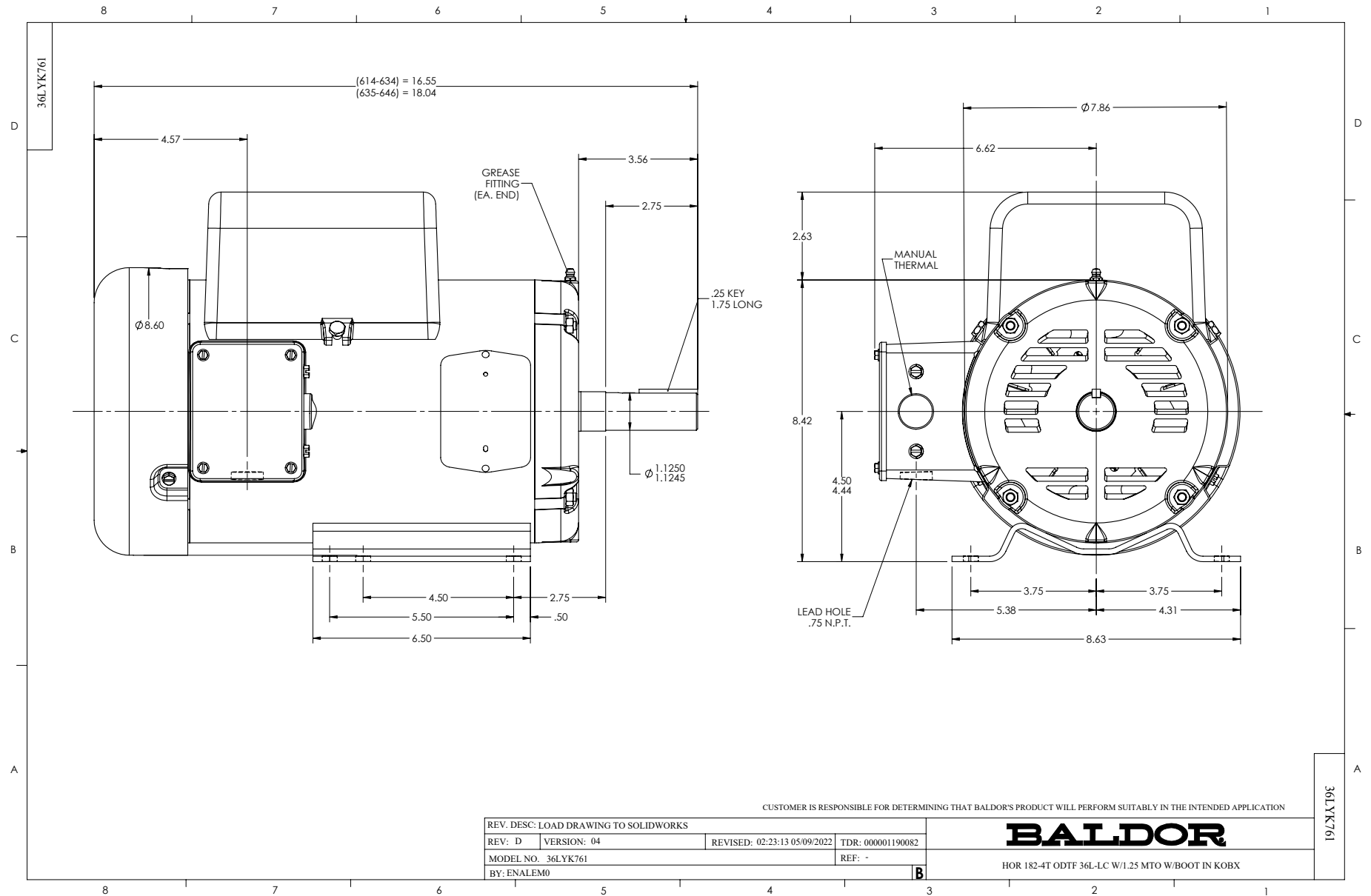
WINDING # 36WGx262

Typical performance - not guaranteed values.

5 HP 1 PH 60 HZ 1725 RPM 230 V 3634LC

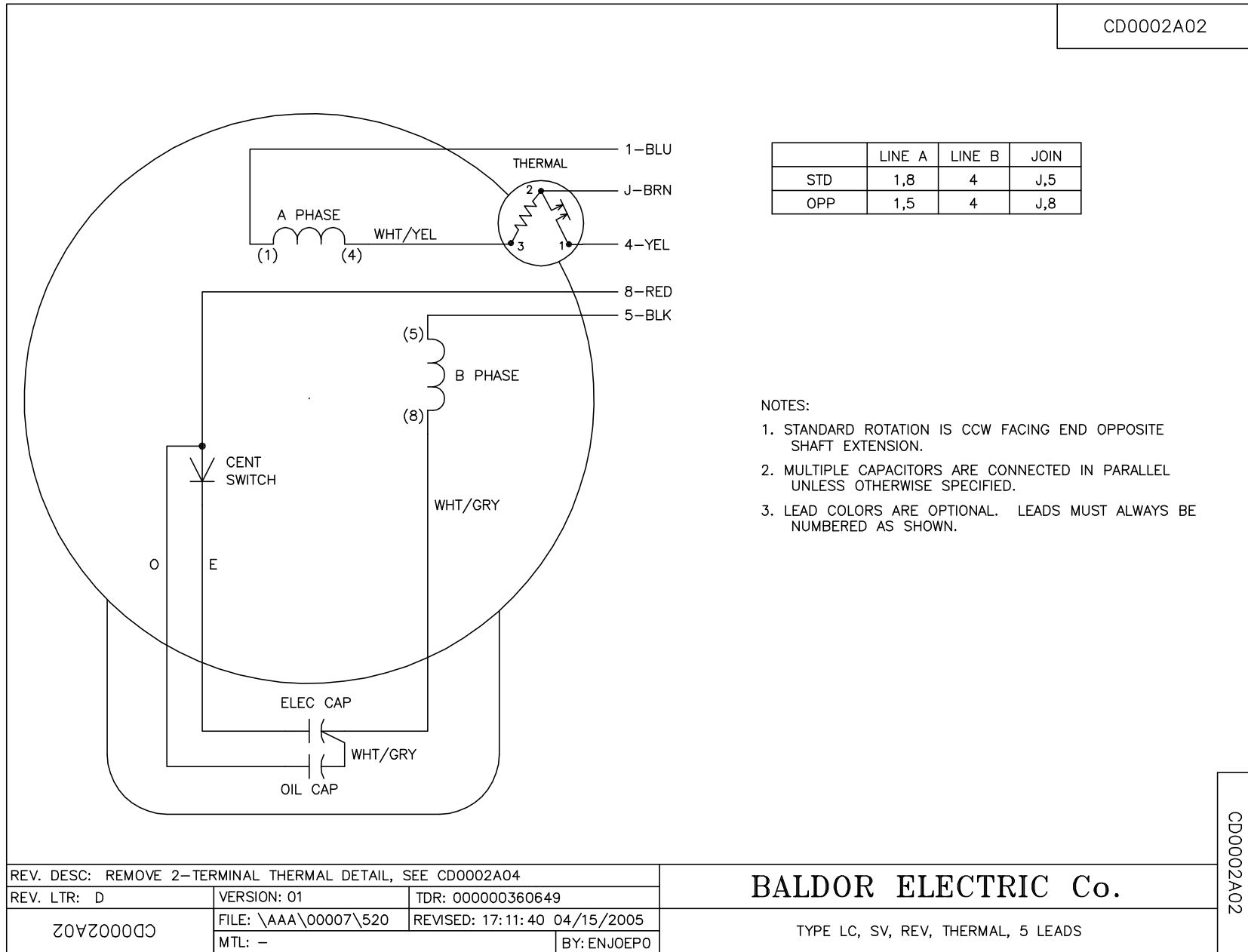
TORQUES (LB-FT): PO=35 PU=29 LR=36 LRA=137







CD0002A02



	LINE A	LINE B	JOIN
STD	1,8	4	J,5
OPP	1,5	4	J,8

- NOTES:
1. STANDARD ROTATION IS CCW FACING END OPPOSITE SHAFT EXTENSION.
  2. MULTIPLE CAPACITORS ARE CONNECTED IN PARALLEL UNLESS OTHERWISE SPECIFIED.
  3. LEAD COLORS ARE OPTIONAL. LEADS MUST ALWAYS BE NUMBERED AS SHOWN.

REV. DESC: REMOVE 2-TERMINAL THERMAL DETAIL, SEE CD0002A04		
REV. LTR: D	VERSION: 01	TDR: 000000360649
CD0002A02	FILE: \AAA\00007\520	REVISED: 17:11:40 04/15/2005
	MTL: -	BY: ENJOEPO

**BALDOR ELECTRIC Co.**

TYPE LC, SV, REV, THERMAL, 5 LEADS

CD0002A02