

BALDOR • RELIANCE

Customer information packet

L1408T-50

3/2.2KW, 1450RPM, 1PH, 50HZ, 184T, 3646LC, OPE

Class - None

Division - Not Applicable

Specifications

Enclosure	OPEN
Frame	184T
Frame Material	Steel
Frequency	50.00 Hz
Haz Area Class and Group	None
Haz Area Division	Not Applicable
Motor Letter Type	Cap Start, Cap Run
Output @ Frequency	2.200 KW @ 50 HZ
Phase	1
Synchronous Speed @ Frequency	1500 RPM @ 50 HZ
Voltage @ Frequency	220.0 V @ 50 HZ
Agency Approvals	C UR US WEEE UKCA CURUS CE
Ambient Temperature	40 °C
Auxillary Box	No Auxillary Box
Auxillary Box Lead Termination	None
Base Indicator	Rigid
Bearing Grease Type	Polyrex EM (-20F +300F)
Blower	None
Current @ Voltage	12.000 A @ 220.0 V
Design Code	-
Drip Cover	No Drip Cover
Duty Rating	CONT
Efficiency @ 100% Load	84.3 %
Electrically Isolated Bearing	Not Electrically Isolated
Feedback Device	NO FEEDBACK
Front Shaft Indicator	None
Heater Indicator	No Heater
High Voltage Full Load Amps	12.0 a

Part detail

Revision	D
Type	AC
Mech. spec.	36E002
Base	
Status	PRD/A
Elec. spec.	36WGQ060
Layout	36LYE002
Eff. date	05-09-2024
CD Diagram	CD0017A02
Poles	04
Leads	2#14 A PH,2#16 B PH
Proprietary	False
Created date	03-13-2023

Insulation Class	F
Inverter Code	Not Inverter
KVA Code	G
Lifting Lugs	Standard Lifting Lugs
Locked Bearing Indicator	No Locked Bearing
Motor Lead Quantity/Wire Size	2 @ 14 AWG, A PH
Motor Lead Termination	Flying Leads
Motor Standards	NEMA
Motor Type	3646LC
Mounting Arrangement	F1
Number of Poles	4
Overall Length	16.50 IN
Power Factor	99
Product Family	General Purpose
Pulley End Bearing Type	Ball
Pulley Face Code	Standard
Pulley Shaft Indicator	Standard
Rodent Screen	None
RoHS Status	ROHS COMPLIANT
Service Factor	1.15
Shaft Diameter	1.125 IN
Shaft Ground Indicator	No Shaft Grounding
Shaft Rotation	Reversible
Shaft Slinger Indicator	No Slinger
Speed	1450 rpm
Speed Code	Single Speed
Starting Method	Direct on line
Thermal Device - Bearing	None
Thermal Device - Winding	None
Vibration Sensor Indicator	No Vibration Sensor
Winding Thermal 1	None
Winding Thermal 2	None

Nameplate

NP1372L	
CAT.NO.	L1408T-50
SPEC.	36E002Q060
HP	3/2.2KW
VOLTS	220
AMP	12
R.P.M. (1/MIN)	1450
FRAME	184T HZ 50 PH 1
SER.F.	1.15 CODE G DES - CL F
NEMA-NOM-EFF	84.3 PF 99
RATING	40C AMB-S1 CONT
CC	IP22 45KG IC01
DE	6206 ODE 6205
ENCL	OPEN SN
	IE2-50HZ 85 (75%),83 (50%)

Accessories

Part number	Description	Multiplier
36-3403	C FACE KIT	A8
36EP1405A09SP	D-FLANGE KIT	

AC Induction Motor Performance Data

Record # 101591

Typical performance - not guaranteed values

Winding: 36WGQ060-R001		Type: 3646LC		Enclosure: OPEN	
Nameplate Data			220 V, 50 Hz: Single Voltage Motor		
Rated Output (KW)	2.2	Full Load Torque	10.71 LB-FT		
Volts	220	Start Configuration	direct on line		
Full Load Amps	12	Breakdown Torque	20.2 LB-FT		
R.P.M.	1450	Pull-up Torque	17.8 LB-FT		
Hz	50	Locked-rotor Torque	37.3 LB-FT		
NEMA Design Code	-	Starting Current	81.4 A		
Service Factor (S.F.)	1.15	No-load Current	1.48 A		
NEMA Nom. Eff.	84.3	Line-line Res. @ 25°C	0.86665 Ω A Ph 1.4732 Ω B Ph		
Power Factor	99	Temp. Rise @ Rated Load	37°C		
Rating - Duty	40C AMB-CONT	Temp. Rise @ S.F. Load	49°C		
S.F. Amps					

Load Characteristics 220 V, 50 Hz, 2.2 KW

% of Rated Load	25	50	75	100	125	150	S.F.
Power Factor	96	99	99	99	98	96	98
Efficiency	71.3	83.5	85.8	84.8	81.4	74.8	82.8
Speed	1488.6	1477.8	1465.2	1450	1430.1	1397.8	1438
Line amperes	3.68	6.06	8.81	11.9	15.7	20.9	14.2

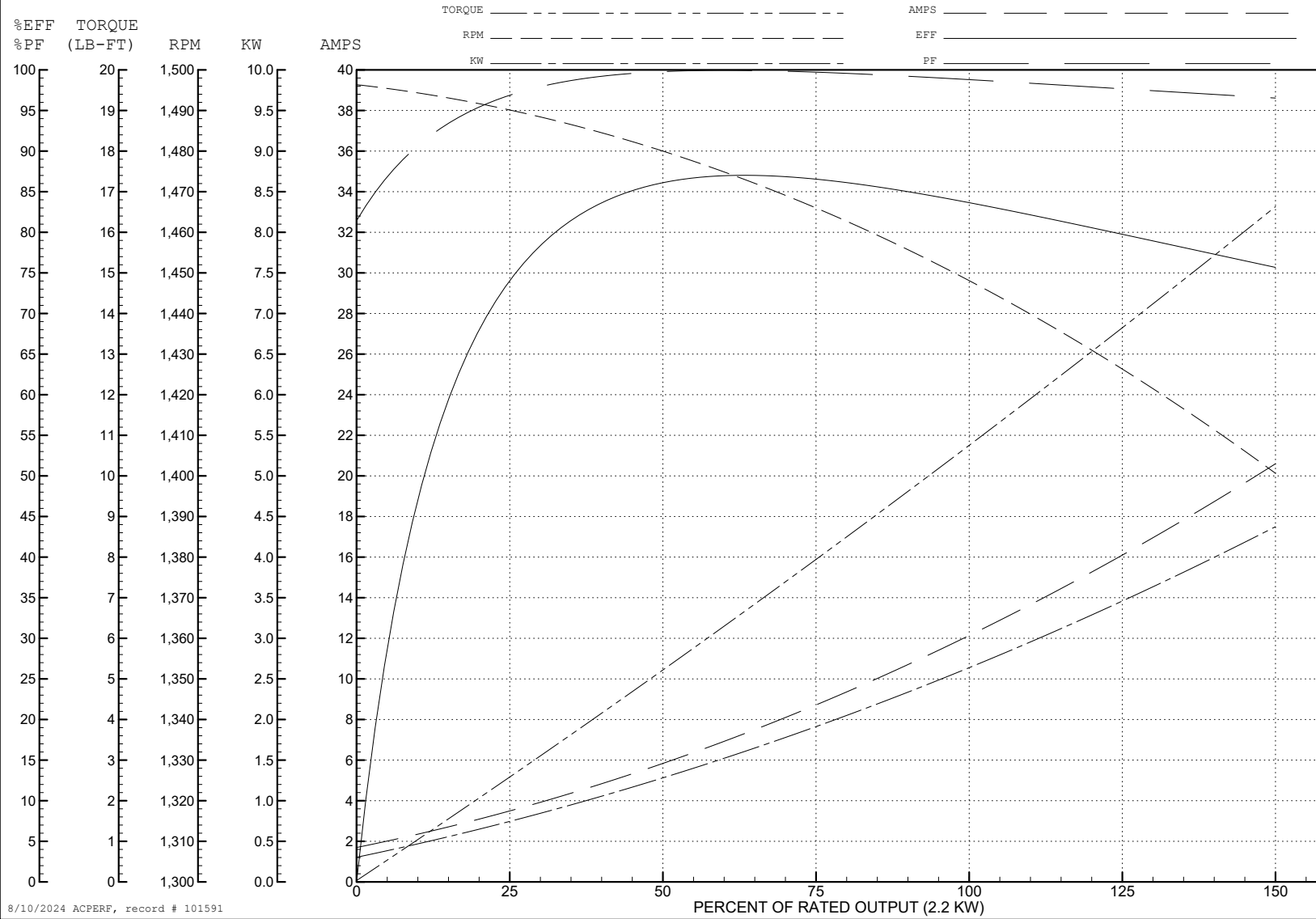
ABB Motors and Mechanical Inc.

WINDING # 36WGQ060

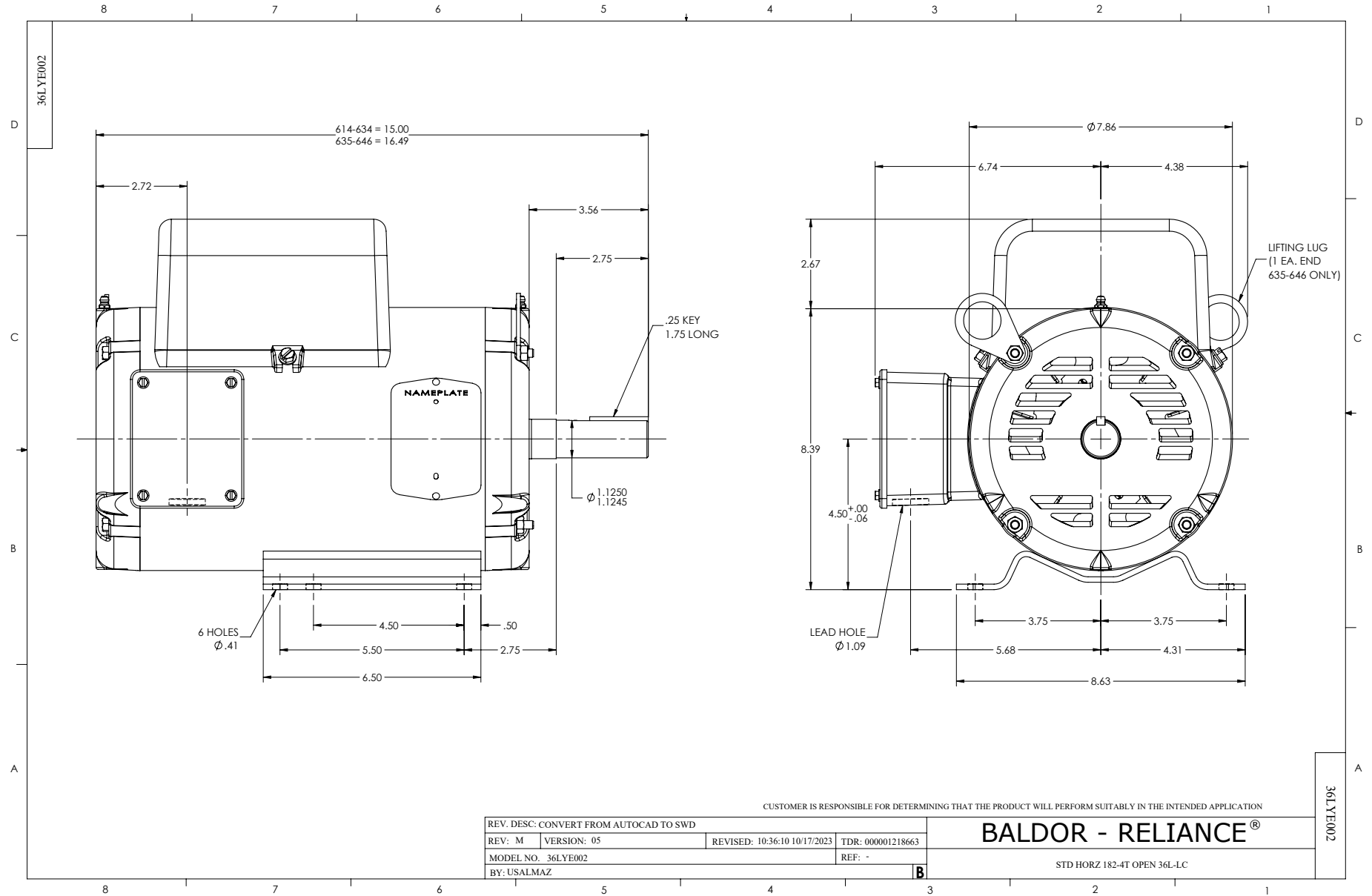
Typical performance - not guaranteed values.

2.2 KW 1 PH 50 HZ 1450 RPM 220 V 3646LC

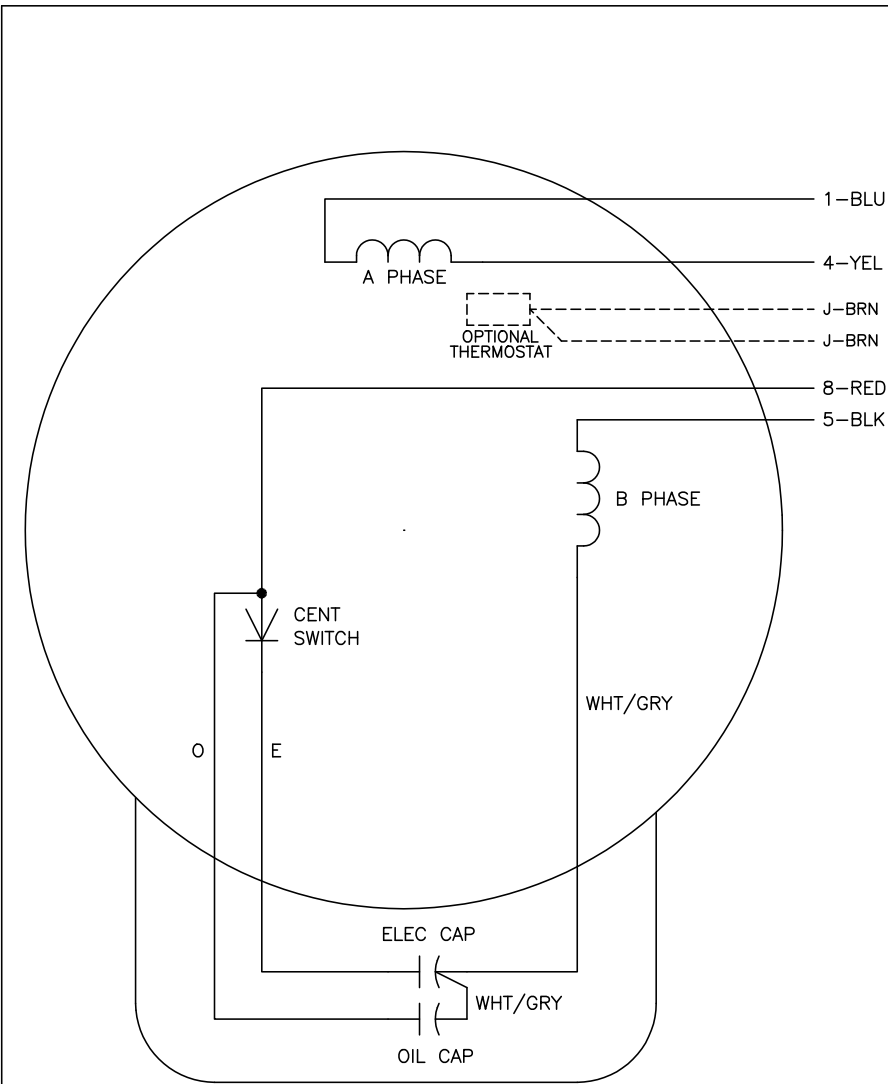
TORQUES (LB-FT): PO=20.2 PU=17.8 LR=37.3 LRA=81.4



8/10/2024 ACPERF, record # 101591



CD0017A02



	LINE A	LINE B
STD	1,8	4,5
OPP	1,5	4,8

NOTES:

1. STANDARD ROTATION IS CCW FACING END OPPOSITE SHAFT EXTENSION.
2. OPTIONAL THERMOSTAT IS PROVIDED WHEN SPECIFIED.
3. MULTIPLE CAPACITORS ARE CONNECTED IN PARALLEL UNLESS OTHERWISE SPECIFIED.
4. LEAD COLORS ARE OPTIONAL. LEADS MUST ALWAYS BE NUMBERED AS SHOWN.

CD0017A02

REV. DESC: REVISE TO SHOW OPTIONAL COLORS			
REV. LTR: B	BY: JLP	REVISED: 04/09/99 11:30	TDR: 0178636
CD0017A02		FILE: AAA00007514	MDL: -
		MTL: -	

BALDOR ELECTRIC Co.

TYPE LC, SV, REV, 4 LEADS