



---

# Customer information packet

## L1406T

3HP, 3450RPM, 1PH, 60HZ, 182T, 3628L, OPEN, F1

Class - None

Division - Not Applicable

## Specifications

Enclosure	OPEN
Frame	182T
Frame Material	Steel
Frequency	60.00 Hz
Haz Area Class and Group	None
Haz Area Division	Not Applicable
Motor Letter Type	Cap Start, Induction Run
Output @ Frequency	3.000 HP @ 60 HZ
Phase	1
Synchronous Speed @ Frequency	3600 RPM @ 60 HZ
Voltage @ Frequency	115.0 V @ 60 HZ 230.0 V @ 60 HZ
Agency Approvals	CSA UR
Ambient Temperature	40 °C
Auxillary Box	No Auxillary Box
Auxillary Box Lead Termination	None
Base Indicator	Rigid
Bearing Grease Type	Polyrex EM (-20F +300F)
Blower	None
Current @ Voltage	28.000 A @ 115.0 V 14.700 A @ 208.0 V 14.000 A @ 230.0 V
Design Code	L
Drip Cover	No Drip Cover
Duty Rating	CONT
Efficiency @ 100% Load	78.0 %
Electrically Isolated Bearing	Not Electrically Isolated
Feedback Device	NO FEEDBACK
Front Face Code	Standard
Front Shaft Indicator	None
Heater Indicator	No Heater

## Part detail

Revision	AJ
Type	AC
Mech. spec.	36D001
Base	
Status	PRD/A
Elec. spec.	36WG0115
Layout	36LYD001
Eff. date	05-09-2024
CD Diagram	CD0001
Poles	02
Leads	4#14 A PH,2#16 B PH
Proprietary	False
Created date	01-01-0001

High Voltage Full Load Amps	14.0 a
Insulation Class	F
Inverter Code	Not Inverter
KVA Code	G
Lifting Lugs	No Lifting Lugs
Locked Bearing Indicator	No Locked Bearing
Motor Lead Exit	Ko Box
Motor Lead Quantity/Wire Size	4 @ 14 AWG, A PH
Motor Lead Termination	Flying Leads
Motor Standards	NEMA
Motor Type	3628L
Mounting Arrangement	F1
Number of Poles	2
Overall Length	15.00 IN
Power Factor	88
Product Family	General Purpose
Pulley End Bearing Type	Ball
Pulley Face Code	Standard
Pulley Shaft Indicator	Standard
Rodent Screen	None
Service Factor	1.15
Shaft Diameter	1.125 IN
Shaft Extension Location	Pulley End
Shaft Ground Indicator	No Shaft Grounding
Shaft Rotation	Reversible
Shaft Slinger Indicator	No Slinger
Speed	3450 rpm
Speed Code	Single Speed
Starting Method	Direct on line
Thermal Device - Bearing	None
Thermal Device - Winding	None
Vibration Sensor Indicator	No Vibration Sensor
Winding Thermal 1	None
Winding Thermal 2	None

**Nameplate**

<b>NP1256L</b>									
<b>CAT.NO.</b>	L1406T								
<b>SPEC.</b>	36D01-115								
<b>HP</b>	3								
<b>VOLTS</b>	115/230								
<b>AMP</b>	28/14								
<b>RPM</b>	3450								
<b>FRAME</b>	182T		<b>HZ</b>	60		<b>PH</b>	1		
<b>SER.F.</b>	1.15	<b>CODE</b>	G	<b>DES</b>	L	<b>CLASS</b>	F		
<b>NEMA-NOM-EFF</b>	78	<b>PF</b>	88						
<b>RATING</b>	40C AMB-CONT								
<b>CC</b>									
<b>DE</b>	6206		<b>ODE</b>	6205					
<b>ENCL</b>	OPEN	<b>SN</b>							

**Accessories**

<b>Part number</b>	<b>Description</b>	<b>Multiplier</b>
36-3403	C FACE KIT	A8
36EP1405A09SP	D-FLANGE KIT	

**AC Induction Motor Performance Data**

Record # 61423

Typical performance - not guaranteed values

Winding: 36WG0115-R007		Type: 3628L	Enclosure: OPEN	
<b>Nameplate Data</b>			<b>115 V, 60 Hz: Low Voltage Connection</b>	
Rated Output (HP)	3	Full Load Torque	4.6 LB-FT	
Volts	115/230	Start Configuration	direct on line	
Full Load Amps	28/14	Breakdown Torque	10.5 LB-FT	
R.P.M.	3450	Pull-up Torque	7.5 LB-FT	
Hz	60 Phase	1	Locked-rotor Torque	8.3 LB-FT
NEMA Design Code	L KVA Code	G	Starting Current	148 A
Service Factor (S.F.)	1.15	No-load Current	10.7 A	
NEMA Nom. Eff.	78 Power Factor	88	Line-line Res. @ 25°C	0.178 Ω A Ph 0.907 Ω B Ph
Rating - Duty	40C AMB-CONT	Temp. Rise @ Rated Load	56°C	
S.F. Amps		Temp. Rise @ S.F. Load	69°C	
		Locked-rotor Power Factor	80.5	
		Rotor inertia	0.126 LB-FT <sup>2</sup>	

**Load Characteristics 115 V, 60 Hz, 3 HP**

% of Rated Load	25	50	75	100	125	150	S.F.
Power Factor	66	81	87	90	89	88	89
Efficiency	58.1	70.7	74.6	75.2	73.9	70.9	74.4
Speed	3557	3522	3484	3439	3385	3314	3407
Line amperes	13.2	17.4	22.8	29	36.4	45.4	33.4

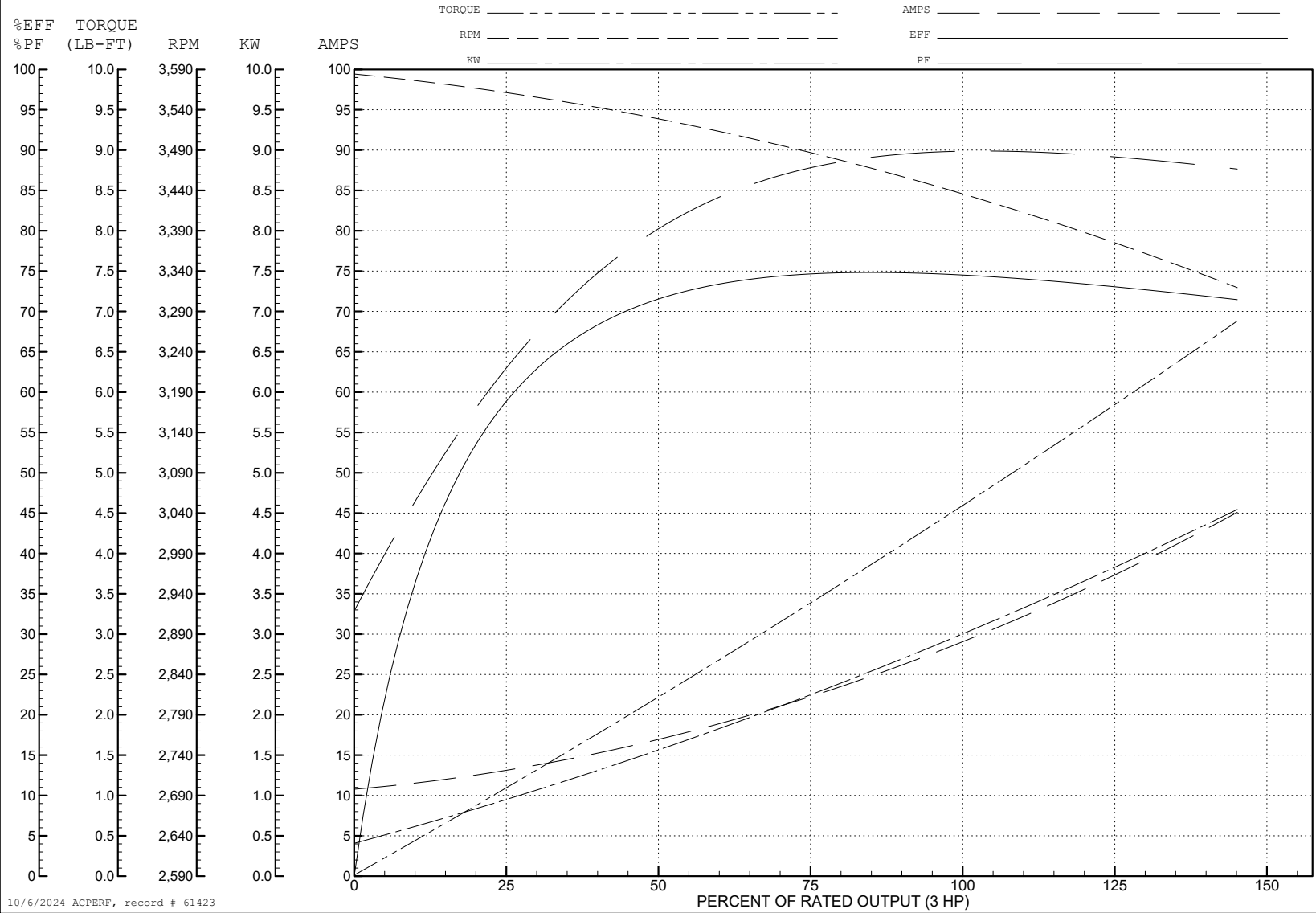
ABB Motors and Mechanical Inc.

WINDING # 36WG0115

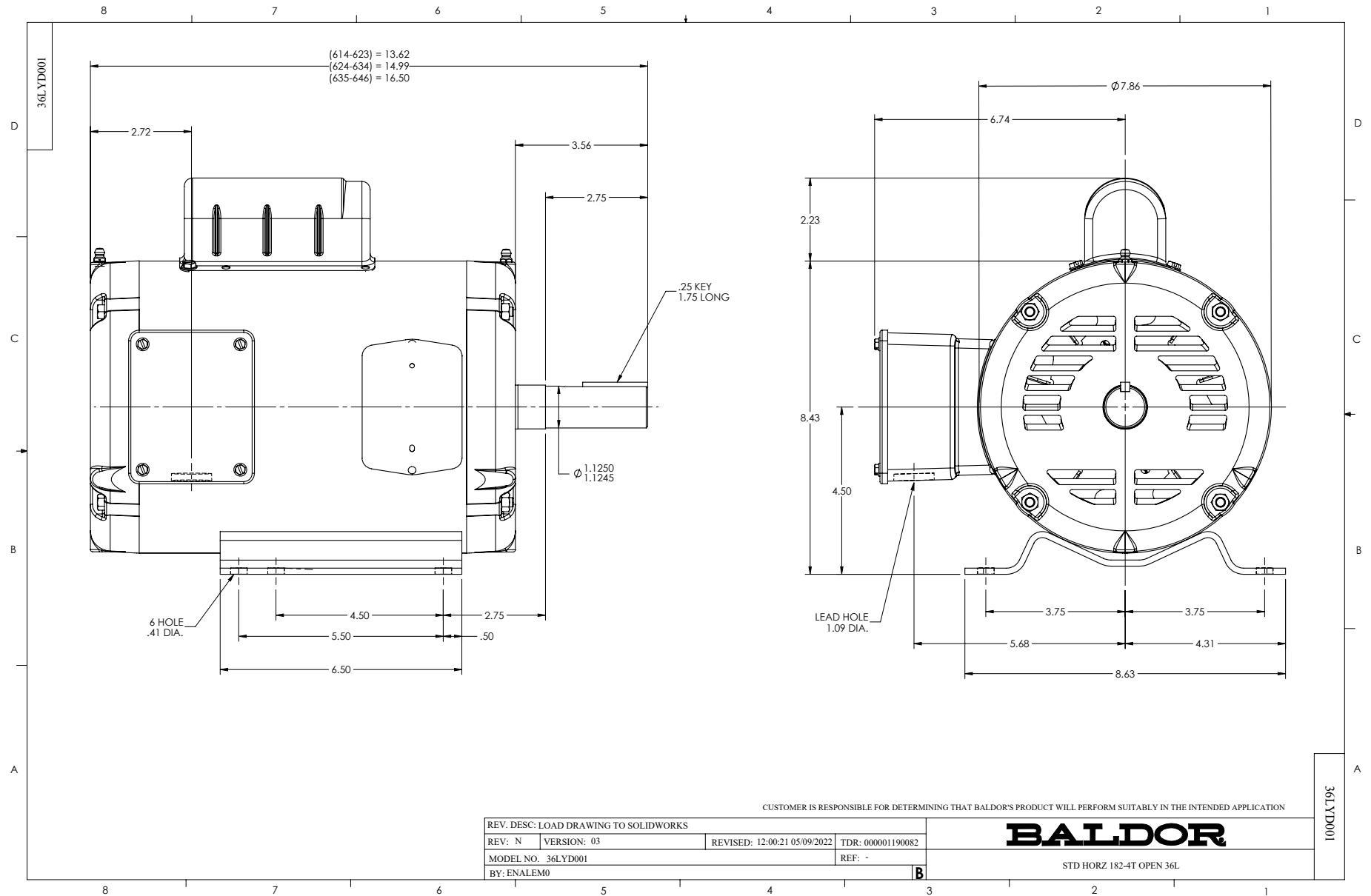
Typical performance - not guaranteed values.

3 HP 1 PH 60 HZ 3450 RPM 115 V 3628L

TORQUES (LB-FT): PO=10.5 PU=7.5 LR=8.3 LRA=148



10/6/2024 ACPERF, record # 61423



CUSTOMER IS RESPONSIBLE FOR DETERMINING THAT BALDOR'S PRODUCT WILL PERFORM SUITABLY IN THE INTENDED APPLICATION

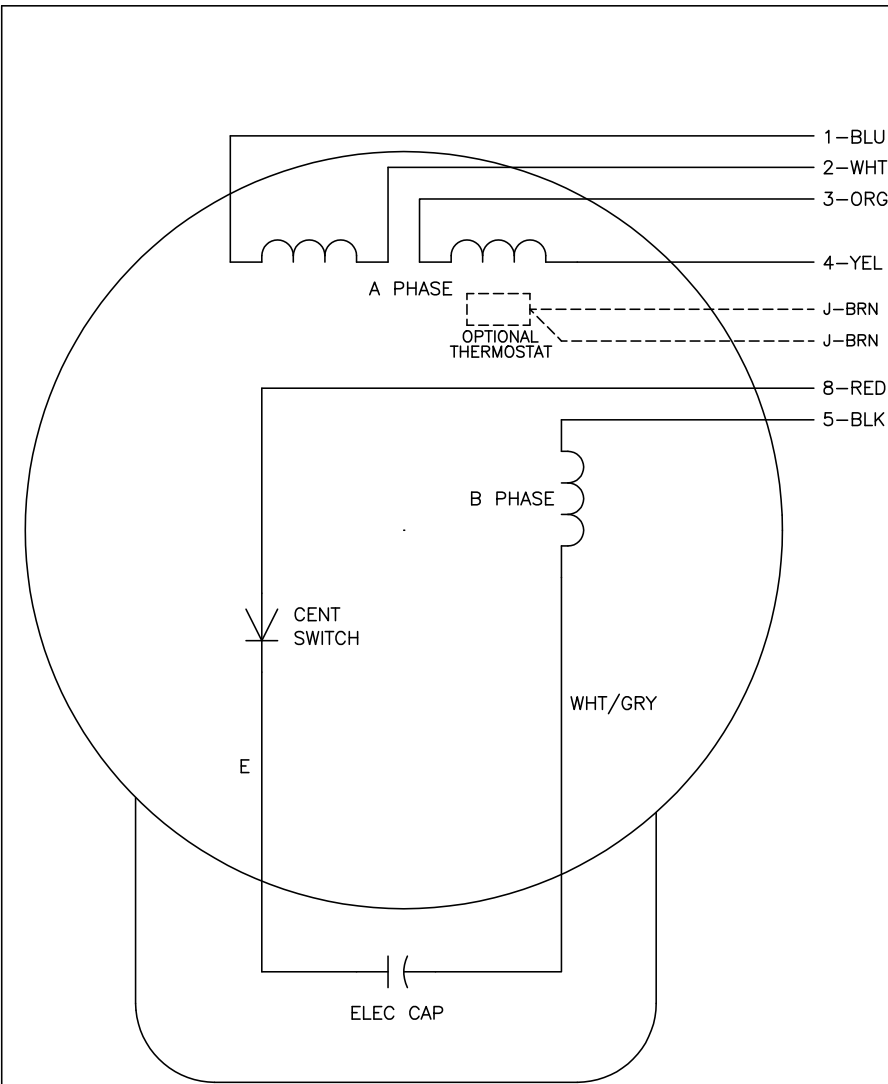
REV. DESC: LOAD DRAWING TO SOLIDWORKS			
REV: N	VERSION: 03	REVISED: 12:00:21 05/09/2022	TDR: 000001190082
MODEL NO. 36LYD001		REF: -	
BY: ENALEM0			

**BALDOR**

STD HORZ 182-4T OPEN 36L



CD0001



	LINE A	LINE B	JOIN
HIGH STD	1	4,5	2,3,8
HIGH OPP	1	4,8	2,3,5
LOW STD	1,3,8	2,4,5	-
LOW OPP	1,3,5	2,4,8	-

**NOTES:**

1. STANDARD ROTATION IS CCW FACING END OPPOSITE SHAFT EXTENSION.
2. OPTIONAL THERMOSTAT IS PROVIDED WHEN SPECIFIED.
3. MULTIPLE CAPACITORS ARE CONNECTED IN PARALLEL UNLESS OTHERWISE SPECIFIED.
4. LEAD COLORS ARE OPTIONAL. LEADS MUST ALWAYS BE NUMBERED AS SHOWN.

REV. DESC: REVISE TO SHOW OPTIONAL COLORS			
REV. LTR: D	BY: JLP	REVISED: 04/08/99 1:16	TDR: 0178636
100000		FILE: AAA00007405	MDL: -
		MTL: -	

**BALDOR ELECTRIC Co.**

TYPE L, DV, REV, 6 LEADS

CD0001