

ABB BALDOR RELIANCE III

Customer information packet

L1401M

1HP, 1725RPM, 1PH, 60HZ, 182, 3617L, OPEN, F1

Class - None

Division - Not Applicable

Specifications

Enclosure	OPEN
Frame	182
Frame Material	Steel
Frequency	60.00 Hz
Haz Area Class and Group	None
Haz Area Division	Not Applicable
Motor Letter Type	Cap Start, Induction Run
Output @ Frequency	1.000 HP @ 60 HZ
Phase	1
Synchronous Speed @ Frequency	1800 RPM @ 60 HZ
Voltage @ Frequency	115.0 V @ 60 HZ 230.0 V @ 60 HZ
Agency Approvals	UR CSA
Ambient Temperature	40 °C
Auxiliary Box	NO AUXILLARY BOX
Auxiliary Box Lead Termination	None
Base Indicator	Rigid
Bearing Grease Type	Polyrex EM (-20F +300F)
Blower	None
Current @ Voltage	14.000 A @ 115.0 V 7.000 A @ 230.0 V
Design Code	L
Drip Cover	No Drip Cover
Duty Rating	CONT
Efficiency @ 100% Load	70.0 %
Electrically Isolated Bearing	Not Electrically Isolated
Feedback Device	NO FEEDBACK
Front Face Code	Standard
Front Shaft Indicator	None
Heater Indicator	No Heater
High Voltage Full Load Amps	7.0 a

Part Detail

Revision	AK
Type	AC
Mech. spec.	36D011
Base	
Status	PRD/A
Elec. spec.	36WG0377
Layout	36LYD011
Eff. date	05-09-2024
CD Diagram	CD0008
Poles	04
Leads	6#16,1#14 #4TH
Proprietary	False
Created date	01-01-0001

Insulation Class	B
Inverter Code	Not Inverter
KVA Code	J
Lifting Lugs	No Lifting Lugs
Locked Bearing Indicator	No Locked Bearing
Motor Lead Exit	Ko Box
Motor Lead Quantity/Wire Size	6 @ 16 AWG
Motor Lead Termination	Flying Leads
Motor Standards	NEMA
Motor Type	3617L
Mounting Arrangement	F1
Number of Poles	4
Overall Length	12.75 IN
Power Factor	66
Product Family	General Purpose
Pulley End Bearing Type	Ball
Pulley Face Code	Standard
Pulley Shaft Indicator	Standard
Rodent Screen	None
Service Factor	1.15
Shaft Diameter	0.875 IN
Shaft Extension Location	Pulley End
Shaft Ground Indicator	No Shaft Grounding
Shaft Rotation	Reversible
Shaft Slinger Indicator	No Slinger
Speed	1725 rpm
Speed Code	Single Speed
Starting Method	Direct on line
Thermal Device - Bearing	None
Thermal Device - Winding	Do Not Use
Vibration Sensor Indicator	No Vibration Sensor
Winding Thermal 1	Manual Thermal Overload
Winding Thermal 1 Location	SB
Winding Thermal 2	None

Nameplate

NP1257L									
CAT.NO.	L1401M								
SPEC.	36D11-377								
HP	1								
VOLTS	115/230								
AMP	14/7								
RPM	1725								
FRAME	182		HZ	60		PH	1		
SER.F.	1.15	CODE	J	DES	L	CL	B		
NEMA-NOM-EFF	70	PF	66						
RATING	40C AMB-CONT								
CC									
DE	6206	ODE	6205						
ENCL	OPEN	SN							

Accessories

Part number	Description	Multiplier
36-486	C FACE KIT	A8
36EP1405A09SP	D-FLANGE KIT	A8

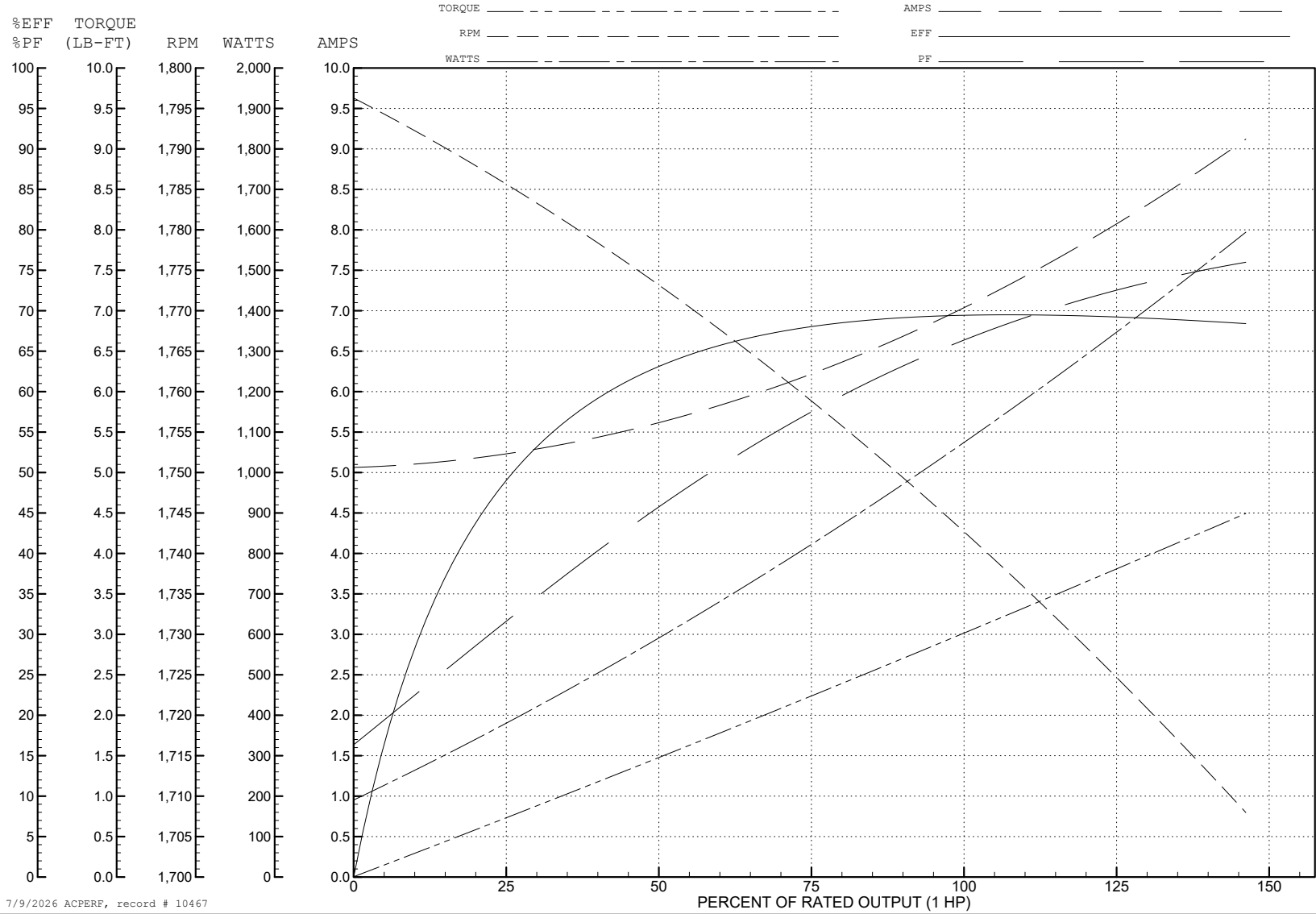
ABB Motors and Mechanical Inc.

WINDING # 36WG0377

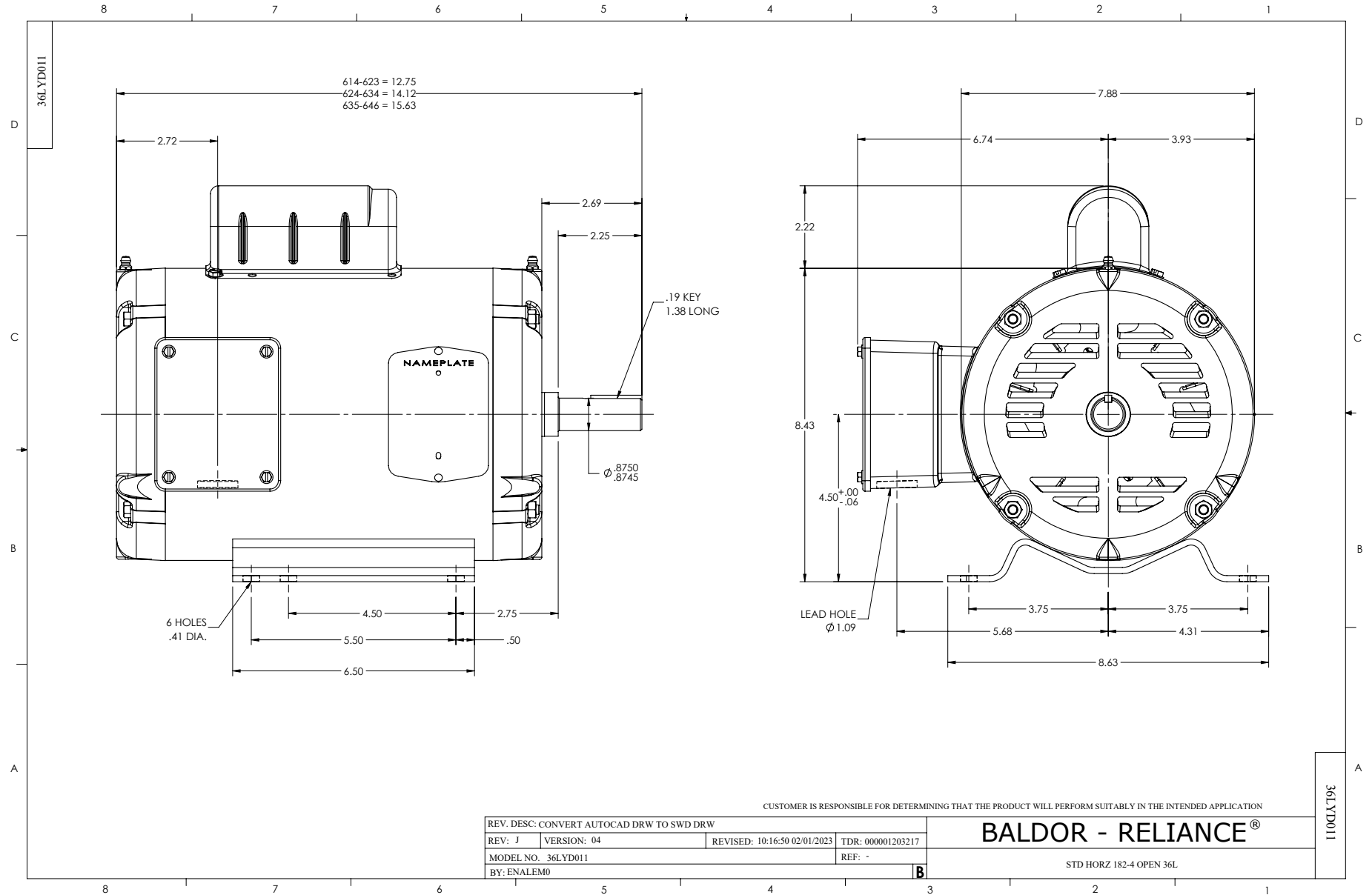
Typical performance - not guaranteed values.

1 HP 1 PH 60 HZ 1725 RPM 230 V 3617L

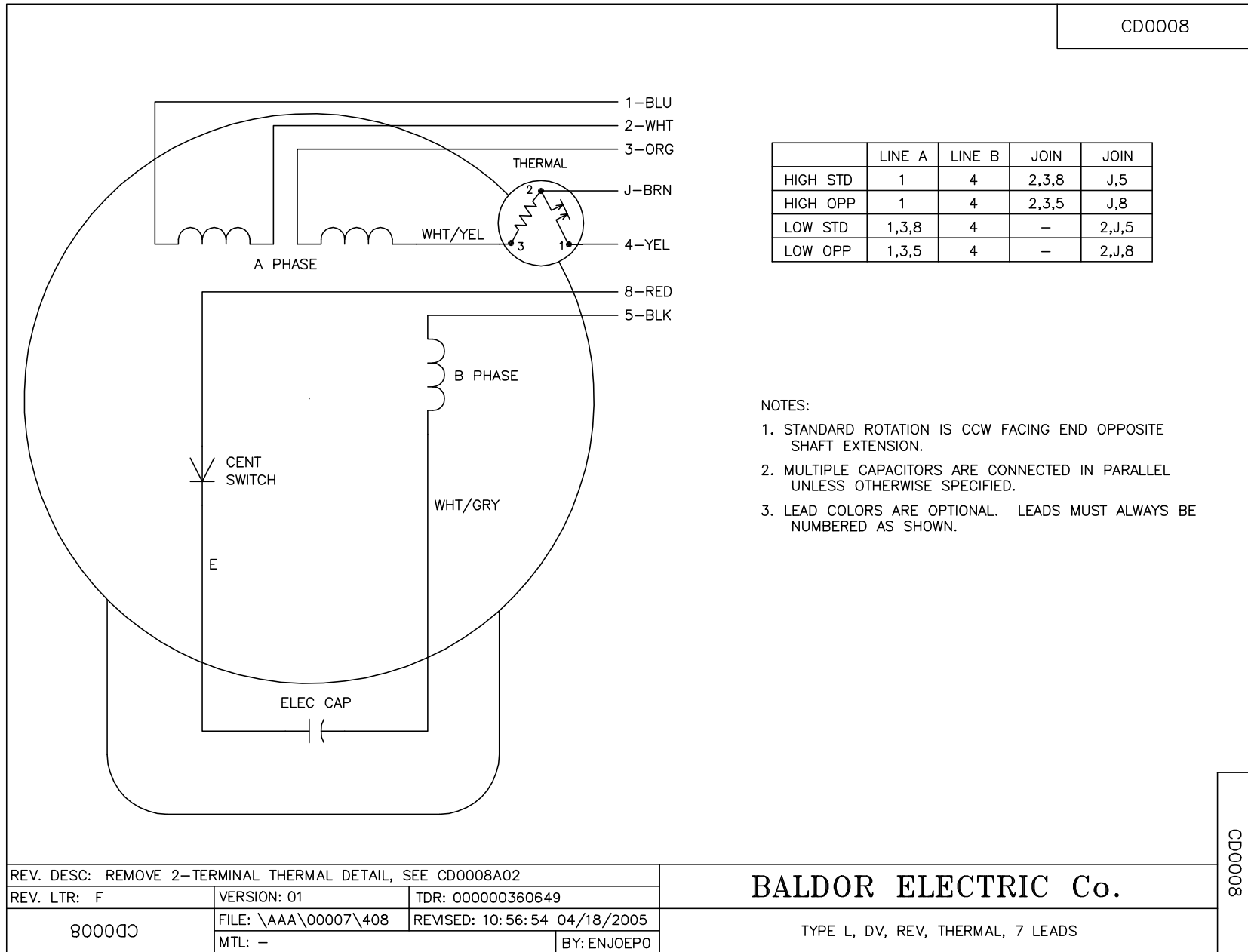
TORQUES (LB-FT): PO=8.2 PU=7.8 LR=9 LRA=33



7/9/2026 ACPERF, record # 10467



CD0008



REV. DESC: REMOVE 2-TERMINAL THERMAL DETAIL, SEE CD0008A02		
REV. LTR: F	VERSION: 01	TDR: 000000360649
800000	FILE: \AAA\00007\408	REVISED: 10:56:54 04/18/2005
	MTL: -	BY: ENJOEPO

BALDOR ELECTRIC Co.

TYPE L, DV, REV, THERMAL, 7 LEADS

CD0008