

ABB BALDOR RELIANCE III

Customer information packet

L1322TM

2HP, 1750RPM, 1PH, 60HZ, 145T, 3532LC, OPEN, F1

Class - None

Division - Not Applicable

Specifications

Enclosure	OPEN
Frame	145T
Frame Material	Steel
Frequency	60.00 Hz
Haz Area Class and Group	None
Haz Area Division	Not Applicable
Motor Letter Type	Cap Start, Cap Run
Output @ Frequency	2.000 HP @ 60 HZ
Phase	1
Synchronous Speed @ Frequency	1800 RPM @ 60 HZ
Voltage @ Frequency	115.0 V @ 60 HZ 230.0 V @ 60 HZ
Agency Approvals	C UR US
Ambient Temperature	40 °C
Auxiliary Box	NO AUXILLARY BOX
Auxiliary Box Lead Termination	None
Base Indicator	Rigid
Bearing Grease Type	Polyrex EM (-20F +300F)
Blower	None
Current @ Voltage	17.800 A @ 115.0 V 8.900 A @ 230.0 V
Design Code	L
Drip Cover	No Drip Cover
Duty Rating	CONT
Efficiency @ 100% Load	78.5 %
Electrically Isolated Bearing	Not Electrically Isolated
Feedback Device	NO FEEDBACK
Front Shaft Indicator	None
Heater Indicator	No Heater
High Voltage Full Load Amps	8.9 a
Insulation Class	F
Inverter Code	Not Inverter

Part Detail

Revision	A
Type	AC
Mech. spec.	35EE002
Base	
Status	PRD/A
Elec. spec.	35WGK361
Layout	35LYEE002
Eff. date	08-08-2024
CD Diagram	CD0320
Poles	04
Leads	4#16 A&J,2#18 B PH,1#14 #4TH
Proprietary	False
Created date	05-29-2024

KVA Code	H
Lifting Lugs	No Lifting Lugs
Locked Bearing Indicator	No Locked Bearing
Motor Lead Quantity/Wire Size	4 @ 16 AWG, A&J
Motor Lead Termination	Flying Leads
Motor Standards	NEMA
Motor Type	3532LC
Mounting Arrangement	F1
Number of Poles	4
Overall Length	13.00 IN
Power Factor	92
Product Family	General Purpose
Pulley End Bearing Type	Ball
Pulley Face Code	Standard
Pulley Shaft Indicator	Standard
Rodent Screen	None
Service Factor	1.15
Shaft Diameter	0.875 IN
Shaft Ground Indicator	No Shaft Grounding
Shaft Rotation	Reversible
Shaft Slinger Indicator	No Slinger
Speed	1750 rpm
Speed Code	Single Speed
Starting Method	Direct on line
Thermal Device - Bearing	None
Thermal Device - Winding	None
Vibration Sensor Indicator	No Vibration Sensor
Winding Thermal 1	Manual Thermal Overload
Winding Thermal 1 Location	ES
Winding Thermal 2	None

Nameplate

NP1257L									
CAT.NO.	L1322TM								
SPEC.	35EE002K361								
HP	2								
VOLTS	115/230								
AMP	17.8/8.9								
RPM	1750								
FRAME	145T		HZ	60		PH	1		
SER.F.	1.15	CODE	H	DES	L	CL	F		
NEMA-NOM-EFF	78.5	PF	92						
RATING	40C AMB-CONT								
CC									
DE	6205	ODE	6203						
ENCL	OPEN	SN							

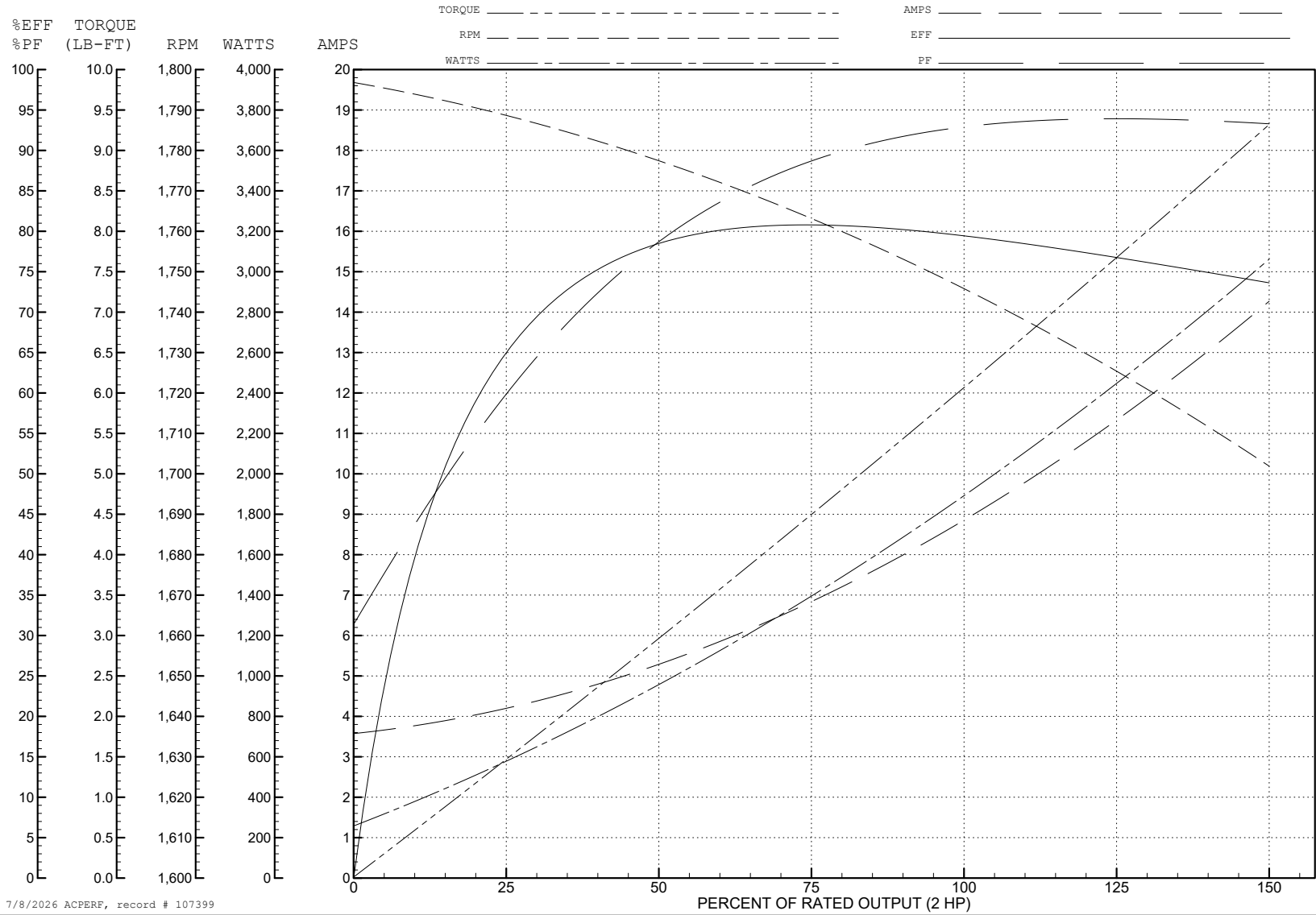
ABB Motors and Mechanical Inc.

WINDING # 35WGK361

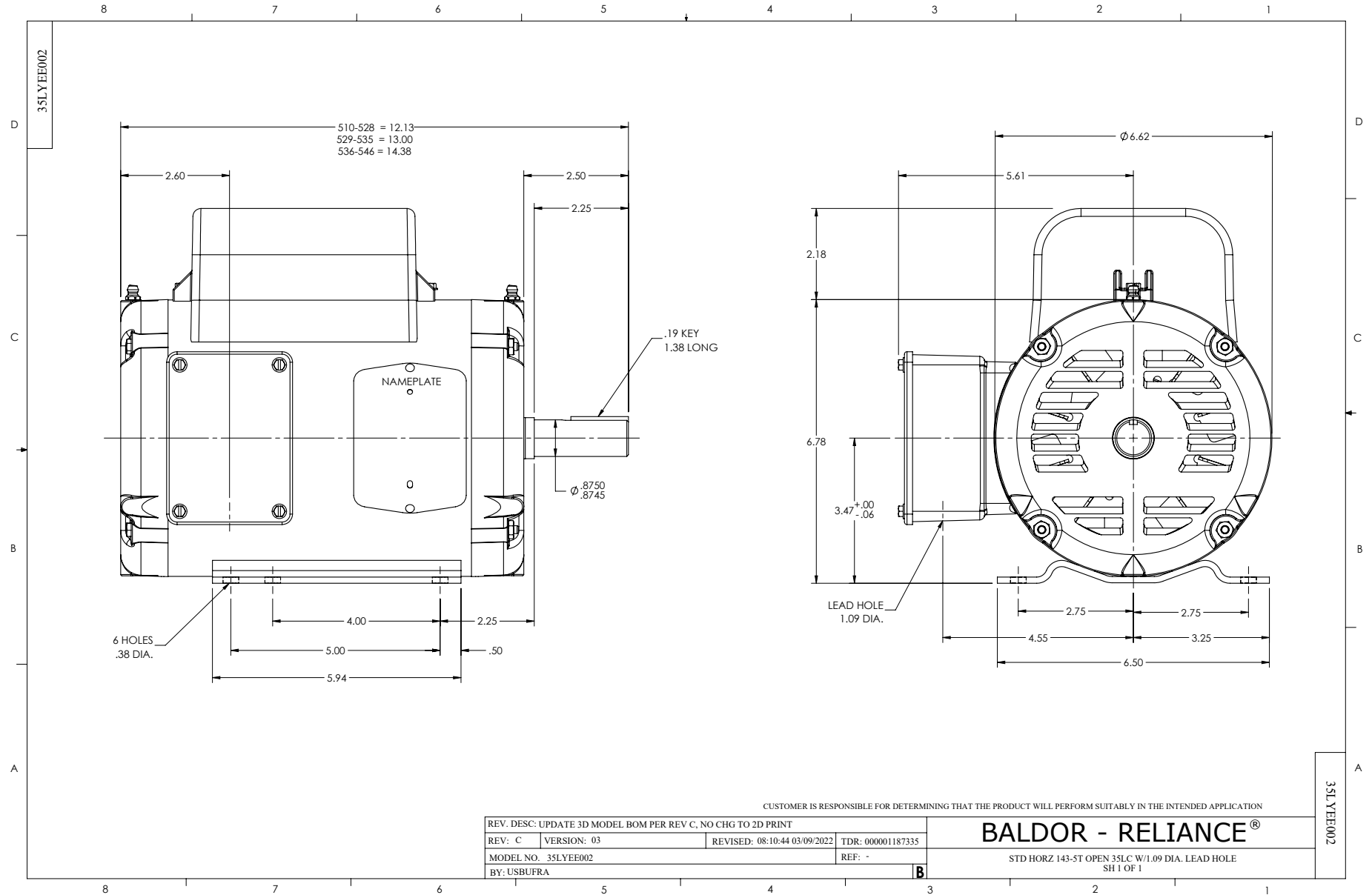
Typical performance - not guaranteed values.

2 HP 1 PH 60 HZ 1750 RPM 230 V 3532LC

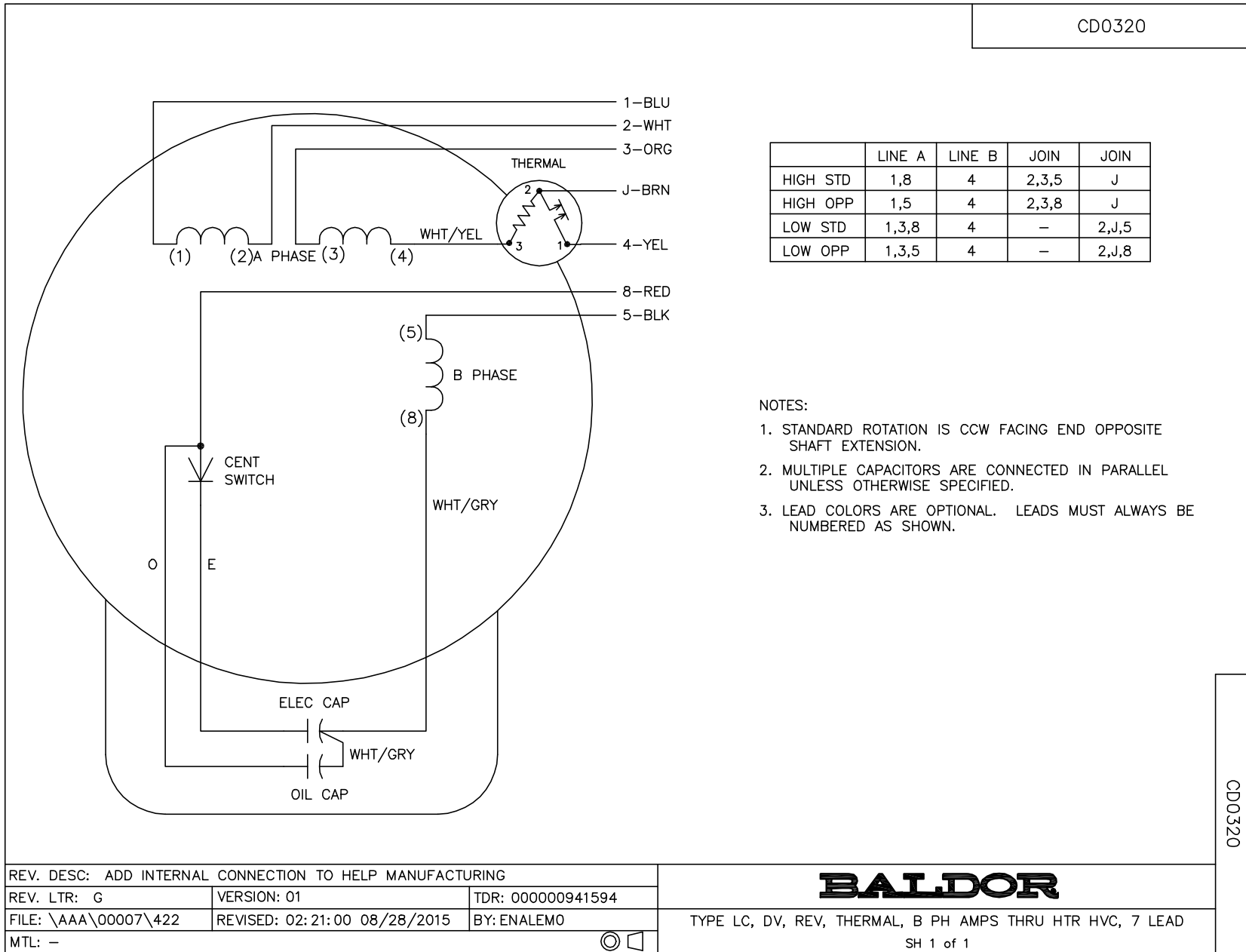
TORQUES (LB-FT): PO=14.9 PU=9.4 LR=13.4 LRA=61.1



7/8/2026 ACPERF, record # 107399



CD0320



CD0320

REV. DESC: ADD INTERNAL CONNECTION TO HELP MANUFACTURING		
REV. LTR: G	VERSION: 01	TDR: 00000941594
FILE: \AAA\00007\422	REVISED: 02: 21: 00 08/28/2015	BY: ENALEMO
MTL: -	© □	

BALDOR

TYPE LC, DV, REV, THERMAL, B PH AMPS THRU HTR HVC, 7 LEAD
SH 1 of 1