

BALDOR • RELIANCE

Customer information packet

L1321TM

1.5HP, 1725RPM, 1PH, 60HZ, 145T, 3535L, OPEN, F

Class - None

Division - Not Applicable

Specifications

Enclosure	OPEN
Frame	145T
Frame Material	Steel
Frequency	60.00 Hz
Motor Letter Type	Cap Start, Induction Run
Output @ Frequency	1.500 HP @ 60 HZ
Phase	1
Synchronous Speed @ Frequency	1800 RPM @ 60 HZ
Voltage @ Frequency	230.0 V @ 60 HZ
	208.0 V @ 60 HZ
	115.0 V @ 60 HZ
XP Class and Group	None
XP Division	Not Applicable
Agency Approvals	CSA
	UR
Ambient Temperature	40 °C
Auxillary Box	No Auxillary Box
Auxillary Box Lead Termination	None
Base Indicator	Rigid
Bearing Grease Type	Polyrex EM (-20F +300F)
Blower	None
Current @ Voltage	9.600 A @ 208.0 V
	21.000 A @ 115.0 V
	10.500 A @ 230.0 V
Design Code	L
Drip Cover	No Drip Cover
Duty Rating	CONT
Efficiency @ 100% Load	70.0 %
Electrically Isolated Bearing	Not Electrically Isolated
Feedback Device	NO FEEDBACK
Front Face Code	Standard
Front Shaft Indicator	None

Part detail

Revision	P
Type	AC
Mech. spec.	35DD001
Base	
Status	PRD/A
Elec. spec.	35WGW335
Layout	35LYDD001
Eff. date	06-01-2021
CD Diagram	CD0269
Poles	04
Leads	4#14 A&J,2#18 B PH,1#12 #4TH
Proprietary	False
Created date	12-22-2009

Heater Indicator	No Heater
High Voltage Full Load Amps	9.6 a
Insulation Class	F
Inverter Code	Not Inverter
KVA Code	M
Lifting Lugs	No Lifting Lugs
Locked Bearing Indicator	No Locked Bearing
Motor Lead Exit	Ko Box
Motor Lead Quantity/Wire Size	4 @ 14 AWG, A&J
Motor Lead Termination	Flying Leads
Motor Standards	NEMA
Motor Type	3535L
Mounting Arrangement	F1
Number of Poles	4
Overall Length	13.00 IN
Power Factor	64
Product Family	General Purpose
Pulley End Bearing Type	Ball
Pulley Face Code	Standard
Pulley Shaft Indicator	Standard
Rodent Screen	None
Service Factor	1.15
Shaft Diameter	0.875 IN
Shaft Extension Location	Pulley End
Shaft Ground Indicator	No Shaft Grounding
Shaft Rotation	Reversible
Shaft Slinger Indicator	No Slinger
Speed	1725 rpm
Speed Code	Single Speed
Starting Method	Direct on line
Thermal Device - Bearing	None
Thermal Device - Winding	Do Not Use
Vibration Sensor Indicator	No Vibration Sensor
Winding Thermal 1	Manual Thermal Overload

Winding Thermal 1 Location

SB

Winding Thermal 2

None

Nameplate

NP1257L									
CAT.NO.	L1321TM								
SPEC.	35DD001W335								
HP	1.5								
VOLTS	115/208-230								
AMP	21/9.6-10.5								
RPM	1725								
FRAME	145T			HZ	60		PH	1	
SER.F.	1.15	CODE	M	DES	L	CL	F		
NEMA-NOM-EFF	70	PF	64						
RATING	40C AMB-CONT								
CC				USABLE AT 208V					
DE	6205	ODE	6203						
ENCL	OPEN	SN							

Accessories

Part number	Description	Multiplier
35-8764	C FACE KIT	A8
35EP1604A01SP	D-FLANGE KIT	A8

AC Induction Motor Performance Data

Record # 61637

Typical performance - not guaranteed values

Winding: 35WGW335-R004			Type: 3535L		Enclosure: OPEN	
Nameplate Data				115 V, 60 Hz: Low Voltage Connection		
Rated Output (HP)	1.5		Full Load Torque	4.5 LB-FT		
Volts	115/208-230		Start Configuration	direct on line		
Full Load Amps	21/9.6-10.5		Breakdown Torque	16 LB-FT		
R.P.M.	1725		Pull-up Torque	12.5 LB-FT		
Hz	60	Phase	1	Locked-rotor Torque	15 LB-FT	
NEMA Design Code	L		KVA Code	M	Starting Current	148 A
Service Factor (S.F.)	1.15		No-load Current	18.6 A		
NEMA Nom. Eff.	70	Power Factor	64	Line-line Res. @ 25°C	0.326 Ω A Ph 1.05 Ω B Ph	
Rating - Duty	40C AMB-CONT		Temp. Rise @ Rated Load	60°C		
S.F. Amps			Temp. Rise @ S.F. Load	66°C		
			Locked-rotor Power Factor	88.8		
			Rotor inertia	0.208 LB-FT ²		

Load Characteristics 115 V, 60 Hz, 1.5 HP

% of Rated Load	25	50	75	100	125	150	S.F.
Power Factor	29	42	54	64	71	76	68
Efficiency	46.5	60.8	67.8	70.1	71.1	70.5	70.7
Speed	1790	1782	1772	1762	1751	1738	1755
Line amperes	18.6	19.2	20.2	22	24.2	27.2	23.3

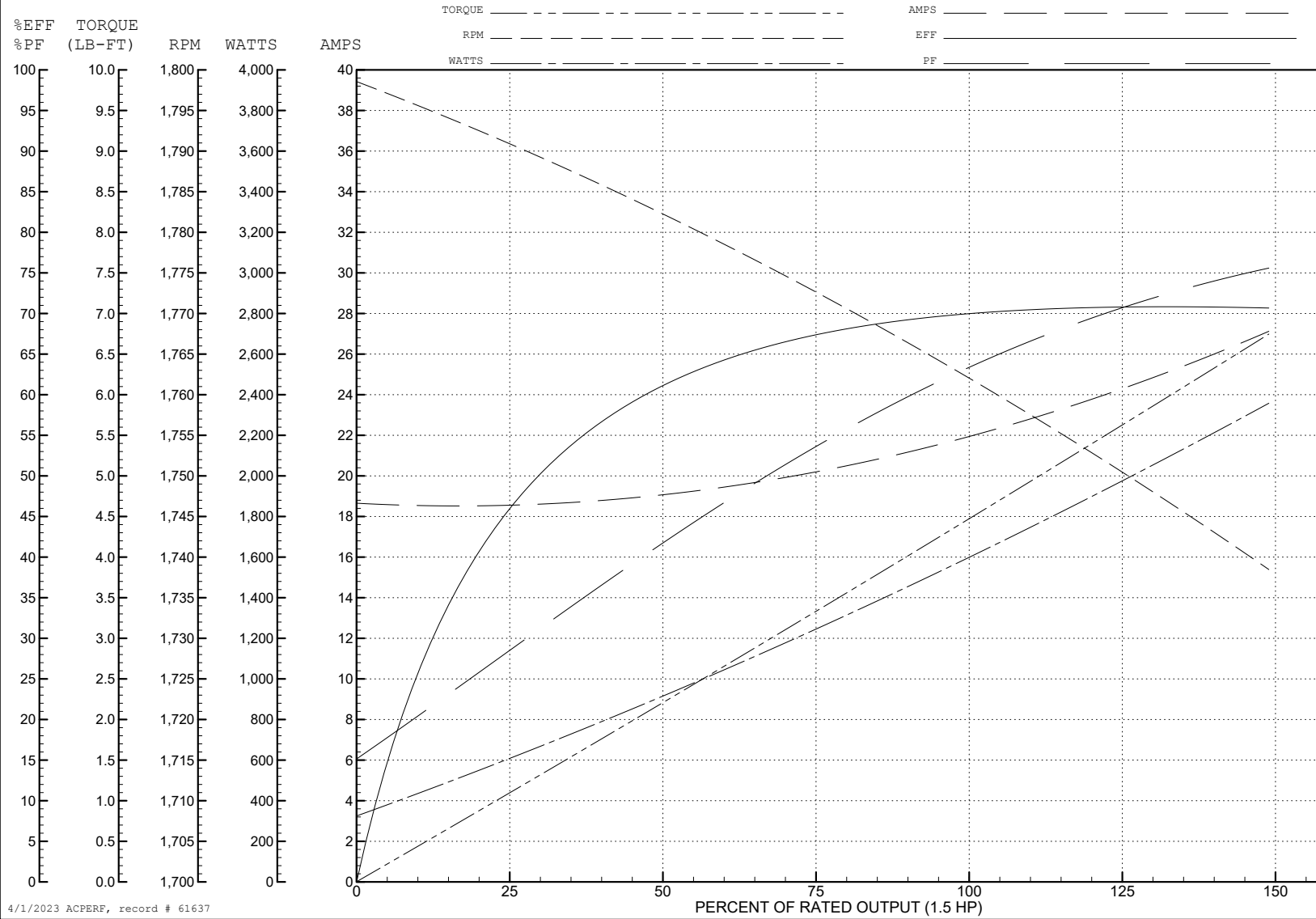
ABB Motors and Mechanical Inc.

WINDING # 35WG335

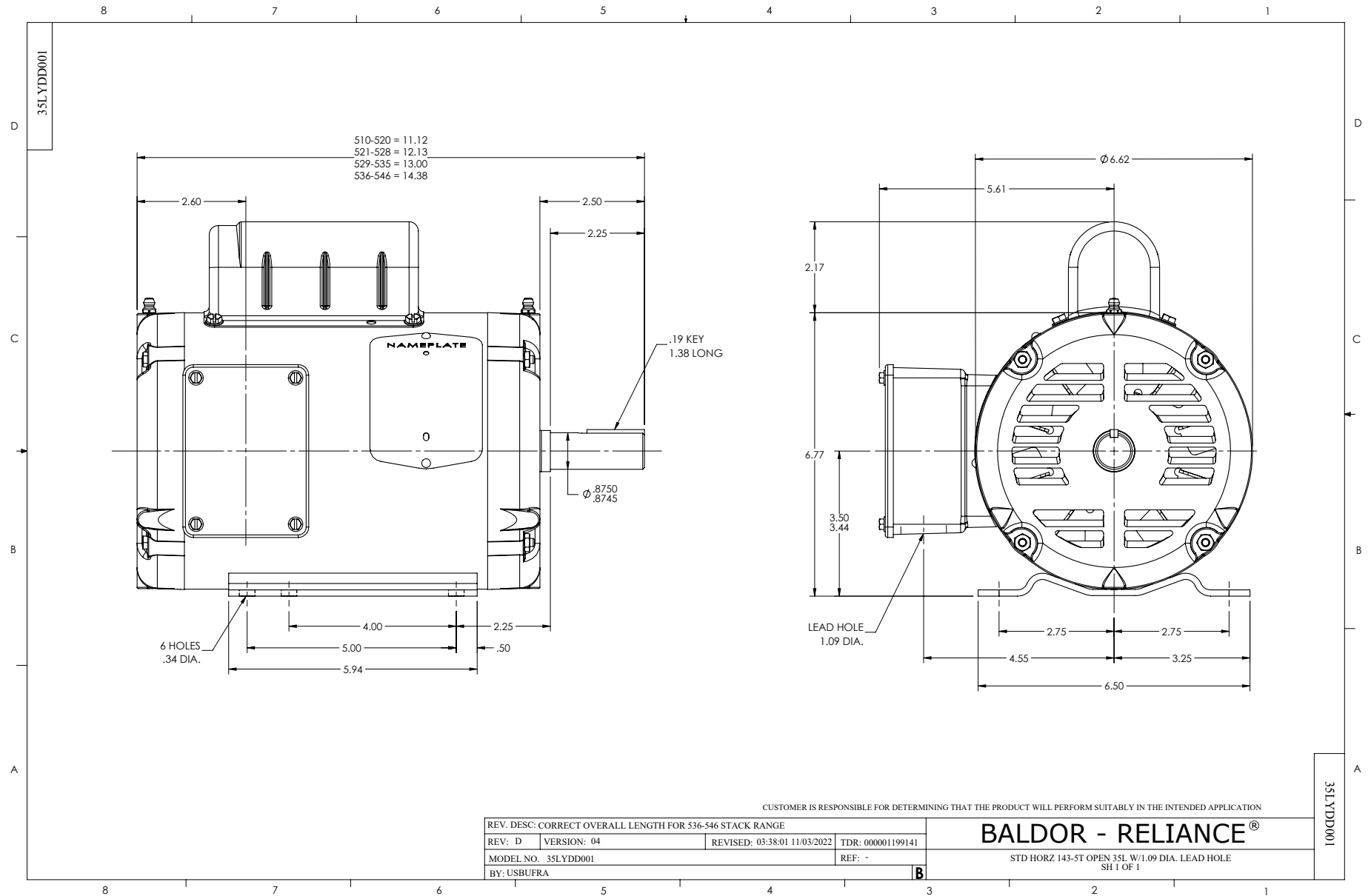
Typical performance - not guaranteed values.

1.5 HP 1 PH 60 HZ 1725 RPM 115 V 3535L

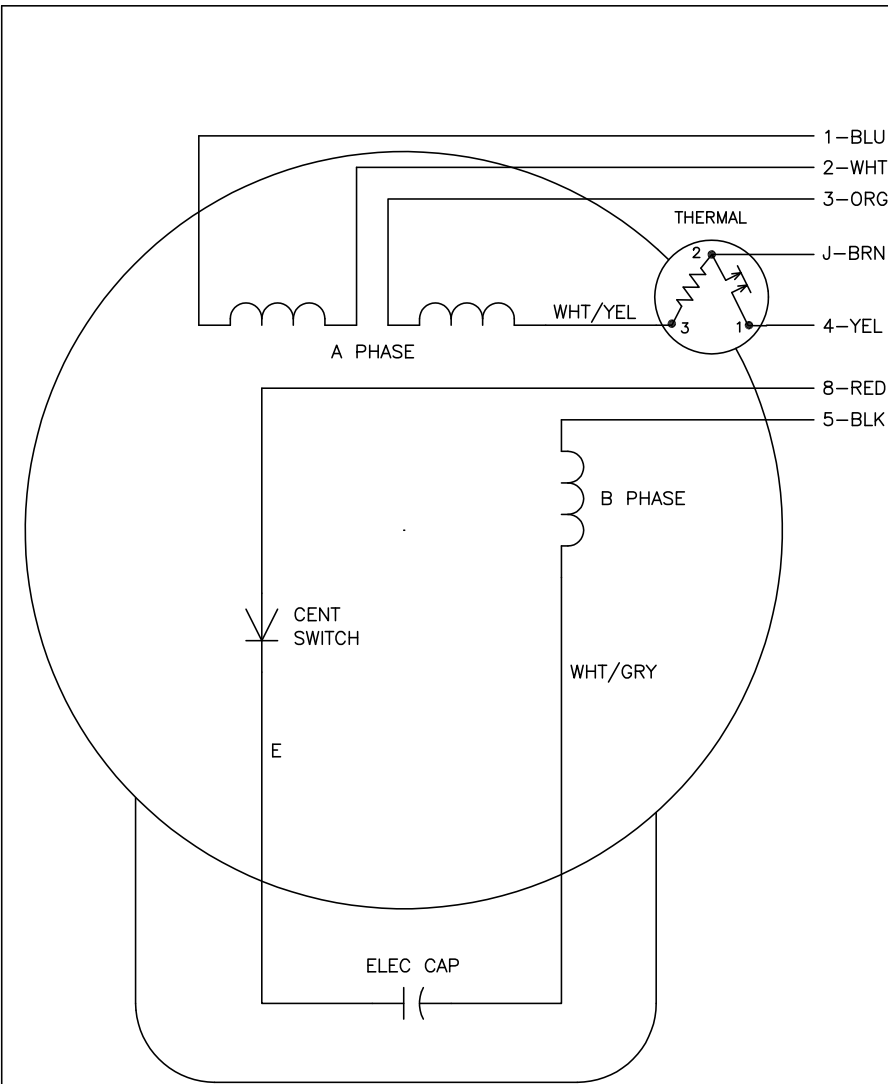
TORQUES (LB-FT): PO=16 PU=12.5 LR=15 LRA=148



4/1/2023 ACPERF, record # 61637



CD0269



	LINE A	LINE B	JOIN	JOIN
HIGH STD	1,8	4	2,3,5	J
HIGH OPP	1,5	4	2,3,8	J
LOW STD	1,3,8	4	-	2,J,5
LOW OPP	1,3,5	4	-	2,J,8

NOTES:

1. STANDARD ROTATION IS CCW FACING END OPPOSITE SHAFT EXTENSION.
2. MULTIPLE CAPACITORS ARE CONNECTED IN PARALLEL UNLESS OTHERWISE SPECIFIED.
3. LEAD COLORS ARE OPTIONAL. LEADS MUST ALWAYS BE NUMBERED AS SHOWN.

CD0269

REV. DESC: REVISE TO SHOW OPTIONAL COLORS			
REV. LTR: E	BY: JLP	REVISED: 04/08/99 1:07	TDR: 0178636
69Z000		FILE: AAA00007421	MDL: -
		MTL: -	

BALDOR ELECTRIC Co.

TYPE L, DV, REV, THERMAL, B PH AMPS THRU HTR HVC, 7 LEAD