

ABB BALDOR RELIANCE III

Customer information packet

L1317-50

2/1.5KW, 2910RPM, 1PH, 50HZ, 56, 3536LC, OPEN

Class - None

Division - Not Applicable

Specifications

Enclosure	OPEN
Frame	56
Frame Material	Steel
Frequency	50.00 Hz
Haz Area Class and Group	None
Haz Area Division	Not Applicable
Motor Letter Type	Cap Start, Cap Run
Output @ Frequency	1.500 KW @ 50 HZ
Phase	1
Synchronous Speed @ Frequency	3000 RPM @ 50 HZ
Voltage @ Frequency	220.0 V @ 50 HZ
Agency Approvals	CE CURUS UKCA WEEE C UR US
Ambient Temperature	40 °C
Auxiliary Box	NO AUXILLARY BOX
Auxiliary Box Lead Termination	None
Base Indicator	Rigid
Bearing Grease Type	Polyrex EM (-20F +300F)
Blower	None
Current @ Voltage	8.100 A @ 220.0 V
Design Code	-
Drip Cover	No Drip Cover
Duty Rating	CONT
Efficiency @ 100% Load	84.0 %
Electrically Isolated Bearing	Not Electrically Isolated
Feedback Device	NO FEEDBACK
Front Shaft Indicator	None
Heater Indicator	No Heater
High Voltage Full Load Amps	8.1 a

Part Detail

Revision	F
Type	AC
Mech. spec.	35M497
Base	
Status	PRD/A
Elec. spec.	35WGG773
Layout	35LYM497
Eff. date	04-20-2026
CD Diagram	CD0055
Poles	02
Leads	4#14 A PH,2#16 B PH
Proprietary	False
Created date	05-25-2023

Insulation Class	F
Inverter Code	Not Inverter
IP Rating	NONE
KVA Code	J
Lifting Lugs	No Lifting Lugs
Locked Bearing Indicator	No Locked Bearing
Motor Lead Quantity/Wire Size	4 @ 14 AWG, A PH
Motor Lead Termination	Flying Leads
Motor Standards	NEMA
Motor Type	3536LC
Mounting Arrangement	F1
Number of Poles	2
Overall Length	14.32 IN
Power Factor	98
Product Family	General Purpose
Pulley End Bearing Type	Ball
Pulley Face Code	Standard
Pulley Shaft Indicator	Standard
Rodent Screen	None
RoHS Status	ROHS COMPLIANT
Service Factor	1.15
Shaft Diameter	0.625 IN
Shaft Ground Indicator	No Shaft Grounding
Shaft Rotation	Reversible
Shaft Slinger Indicator	No Slinger
Speed	2910 rpm
Speed Code	Single Speed
Starting Method	Direct on line
Thermal Device - Bearing	None
Thermal Device - Winding	None
Vibration Sensor Indicator	No Vibration Sensor
Winding Thermal 1	None
Winding Thermal 2	None

Nameplate

NP1372L	
CAT.NO.	L1317-50
SPEC.	35M497G773G1
HP	2/1.5KW
VOLTS	110/220
AMP	17/8.5
R.P.M. (1/MIN)	2910
FRAME	56 HZ 50 PH 1
SER.F.	1.15 CODE J DES - CL F
NEMA-NOM-EFF	84 PF 95
RATING	40C AMB-S1 CONT
CC	IP22 KG27 IC01
DE	6205 ODE 6203
ENCL	OPEN SN
	IE2 85.1(75%) 82.7(50%)

Accessories

Part number	Description	Multiplier
35-8764	C FACE KIT	A8
35EP1604A01SP	D-FLANGE KIT	

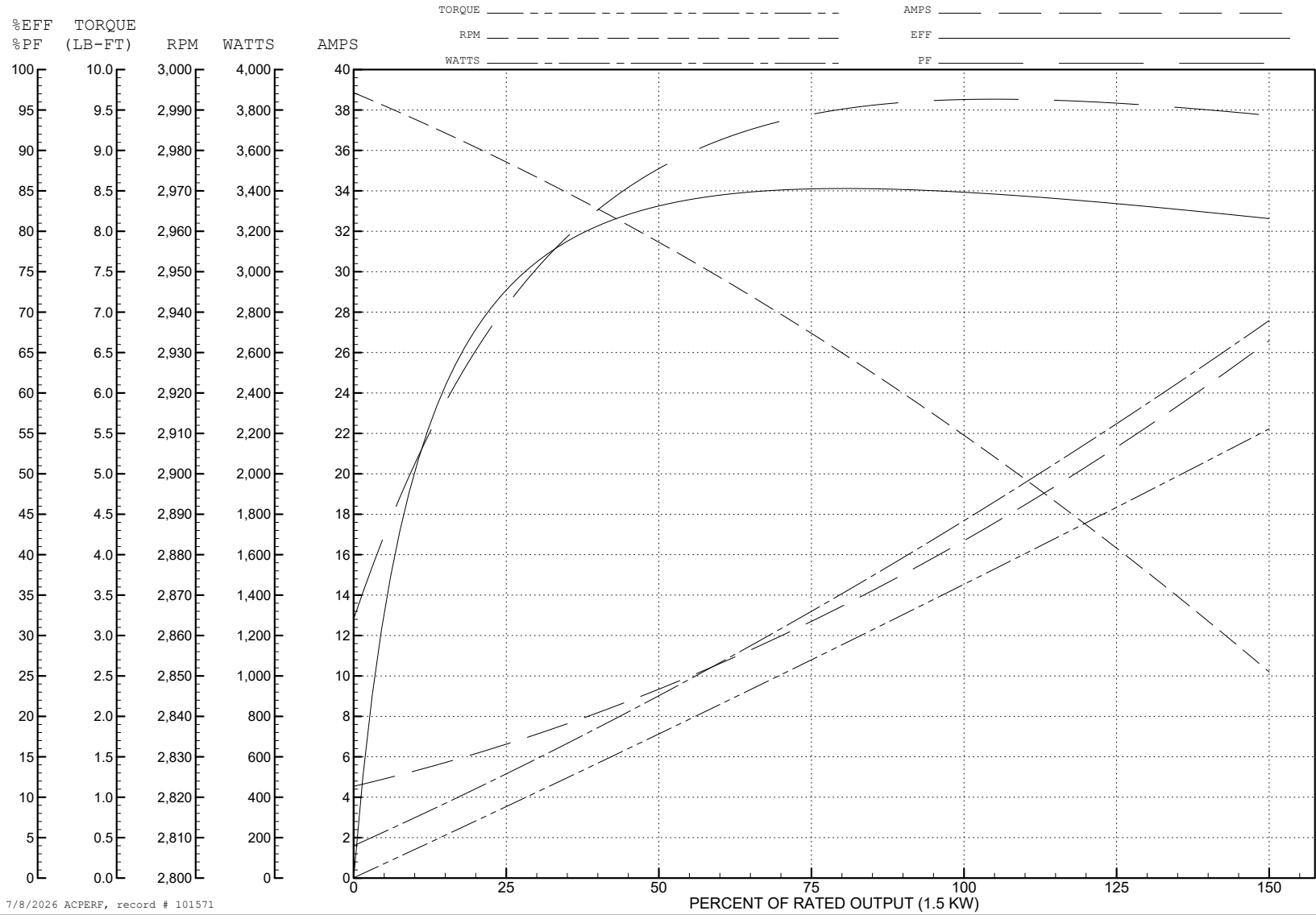
ABB Motors and Mechanical Inc.

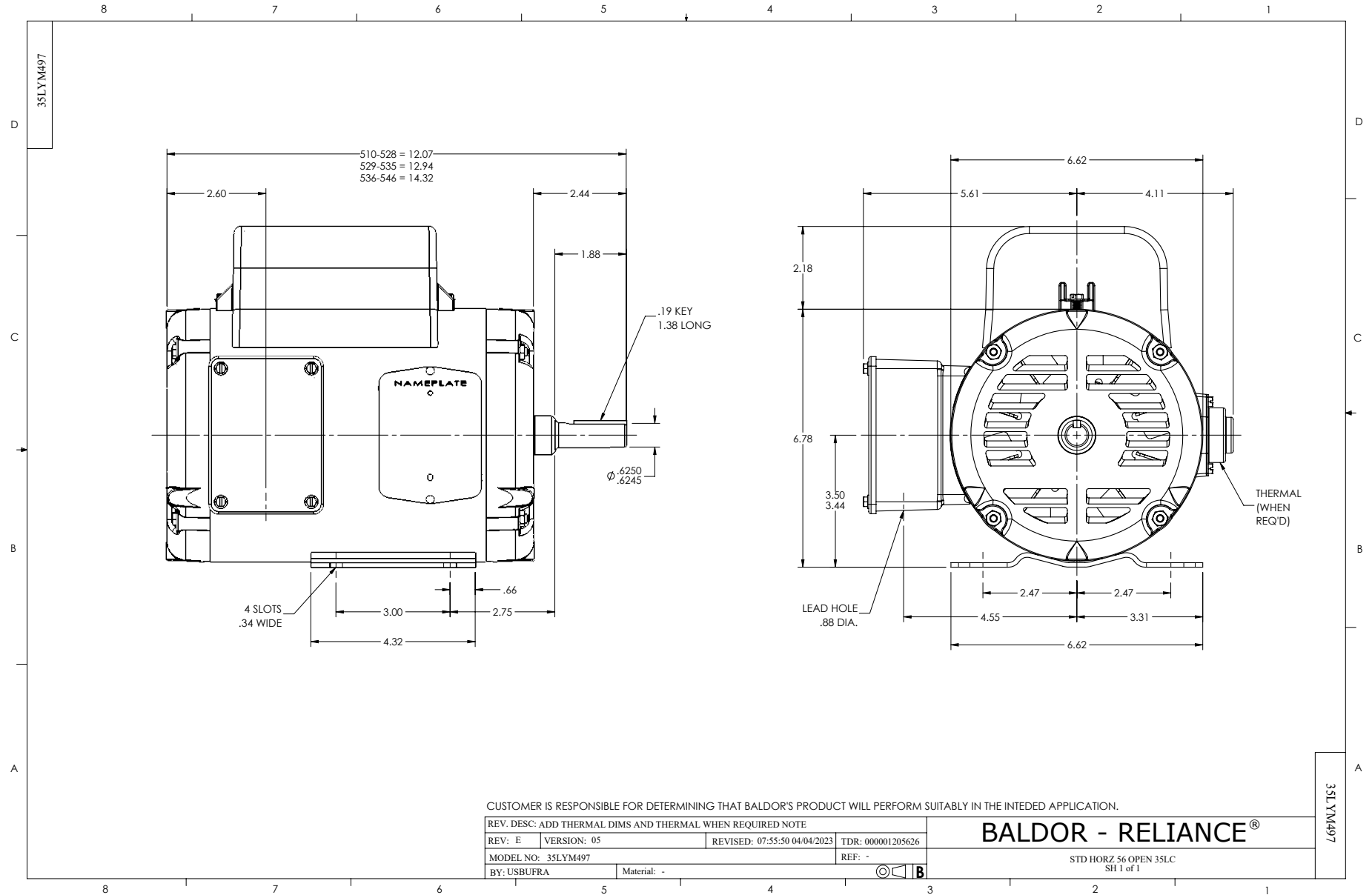
WINDING # 35WGG773

Typical performance - not guaranteed values.

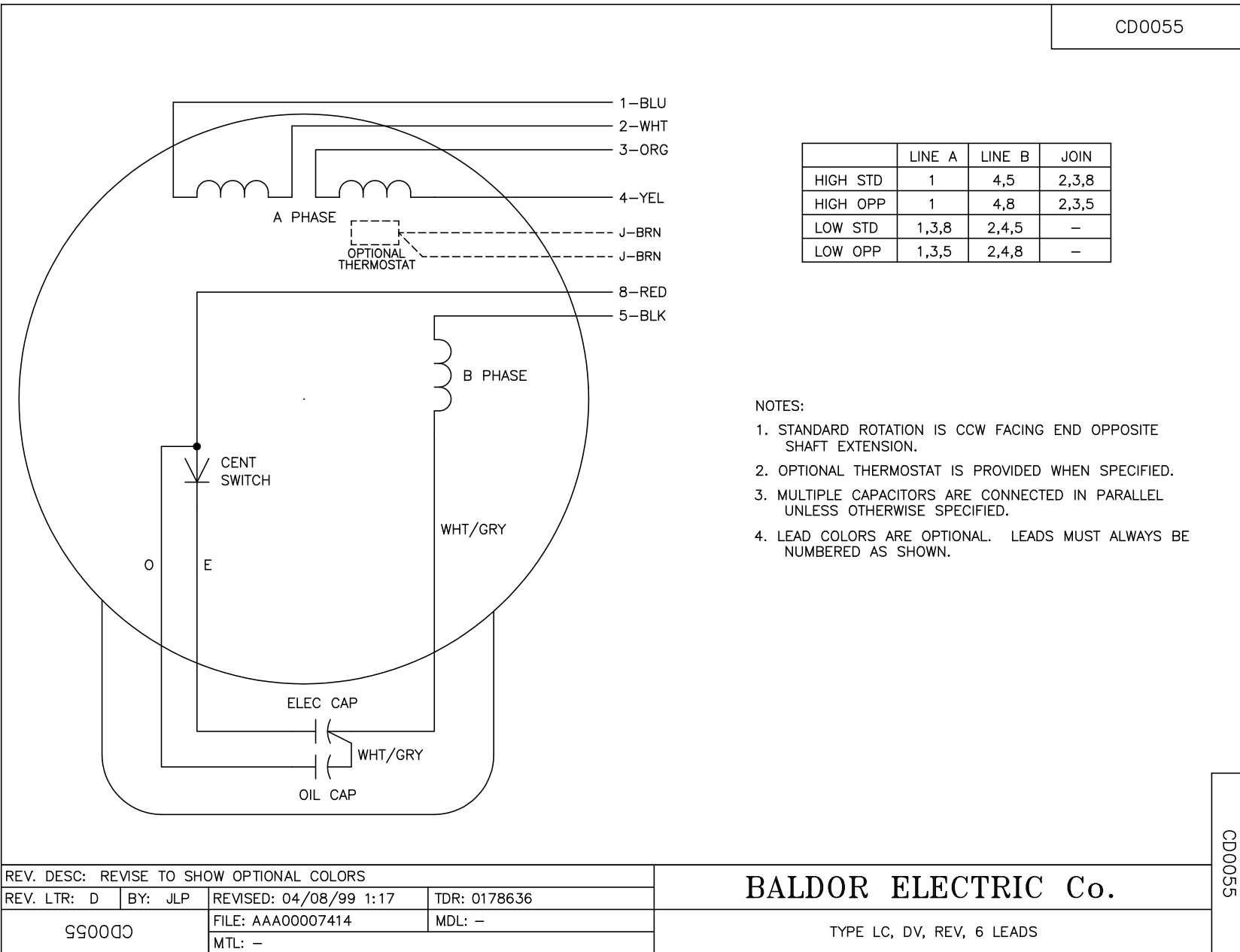
1.5 KW 1 PH 50 HZ 2910 RPM 110 V 3536LC

TORQUES (LB-FT): PO=10.3 PU=7.4 LR=10 LRA=132





CD0055



CD0055

REV. DESC: REVISE TO SHOW OPTIONAL COLORS			
REV. LTR: D	BY: JLP	REVISED: 04/08/99 1:17	TDR: 0178636
C00000		FILE: AAA00007414	MDL: -
		MTL: -	

BALDOR ELECTRIC Co.

TYPE LC, DV, REV, 6 LEADS