

**BALDOR • RELIANCE**

---

# Customer information packet

## L1307-50

.75/.56KW, 1450RPM, 1PH, 50HZ, 56, 3524LC, OPE

Class - None

Division - Not Applicable

Copyright © All product information within this document is subject to ABB Motors and Mechanical Inc. copyright © protection, unless otherwise noted.

8/15/2024 12:22:56 AM

## Specifications

Enclosure	OPEN
Frame	56
Frame Material	Steel
Frequency	50.00 Hz
Haz Area Class and Group	None
Haz Area Division	Not Applicable
Motor Letter Type	Cap Start, Cap Run
Output @ Frequency	.550 KW @ 50 HZ
Phase	1
Synchronous Speed @ Frequency	1500 RPM @ 50 HZ
Voltage @ Frequency	110.0 V @ 50 HZ 220.0 V @ 50 HZ
Agency Approvals	C UR US CE CURUS UKCA WEEE
Ambient Temperature	40 °C
Auxillary Box	No Auxillary Box
Auxillary Box Lead Termination	None
Base Indicator	Rigid
Bearing Grease Type	Polyrex EM (-20F +300F)
Blower	None
Current @ Voltage	7.000 A @ 110.0 V 3.500 A @ 220.0 V
Design Code	-
Drip Cover	No Drip Cover
Duty Rating	CONT
Efficiency @ 100% Load	77.1 %
Electrically Isolated Bearing	Not Electrically Isolated
Feedback Device	NO FEEDBACK
Front Shaft Indicator	None

## Part detail

Revision	F
Type	AC
Mech. spec.	35M497
Base	
Status	PRD/A
Elec. spec.	35WGG603
Layout	35LYM497
Eff. date	05-14-2024
CD Diagram	CD0055
Poles	04
Leads	4#16 A PH,2#18 B PH
Proprietary	False
Created date	02-20-2023

Heater Indicator	No Heater
High Voltage Full Load Amps	3.5 a
Insulation Class	F
Inverter Code	Not Inverter
KVA Code	H
Lifting Lugs	No Lifting Lugs
Locked Bearing Indicator	No Locked Bearing
Motor Lead Quantity/Wire Size	4 @ 16 AWG, A PH
Motor Lead Termination	Flying Leads
Motor Standards	NEMA
Motor Type	3524LC
Mounting Arrangement	F1
Number of Poles	4
Overall Length	12.07 IN
Power Factor	92
Product Family	General Purpose
Pulley End Bearing Type	Ball
Pulley Face Code	Standard
Pulley Shaft Indicator	Standard
Rodent Screen	None
RoHS Status	ROHS COMPLIANT
Service Factor	1.25
Shaft Diameter	0.625 IN
Shaft Ground Indicator	No Shaft Grounding
Shaft Rotation	Reversible
Shaft Slinger Indicator	No Slinger
Speed	1450 rpm
Speed Code	Single Speed
Starting Method	Direct on line
Thermal Device - Bearing	None
Thermal Device - Winding	None
Vibration Sensor Indicator	No Vibration Sensor
Winding Thermal 1	None
Winding Thermal 2	None

**Nameplate**

<b>NP1372L</b>										
<b>CAT.NO.</b>	L1307-50									
<b>SPEC.</b>	35M497G603G1									
<b>HP</b>	.75/.56KW									
<b>VOLTS</b>	110/220									
<b>AMP</b>	7/3.5									
<b>R.P.M. (1/MIN)</b>	1450									
<b>FRAME</b>	56	<b>HZ</b>	50	<b>PH</b>	1					
<b>SER.F.</b>	1.25	<b>CODE</b>	H	<b>DES</b>	-	<b>CL</b>	F			
<b>NEMA-NOM-EFF</b>	77.1	<b>PF</b>	92							
<b>RATING</b>	40C AMB-S1 CONT									
<b>CC</b>	IP22 KG18 IC01									
<b>DE</b>	6205	<b>ODE</b>	6203							
<b>ENCL</b>	OPEN	<b>SN</b>								
SFA 8.6/4.3										

**Accessories**

<b>Part number</b>	<b>Description</b>	<b>Multiplier</b>
35-8764	C FACE KIT	A8
35EP1604A01SP	D-FLANGE KIT	A8

**AC Induction Motor Performance Data**

Record # 101567

Typical performance - not guaranteed values

<b>Winding: 35WGG603-R001</b>		<b>Type: 3524LC</b>		<b>Enclosure: OPEN</b>	
<b>Nameplate Data</b>			<b>220 V, 50 Hz: High Voltage Connection</b>		
<b>Rated Output (KW)</b>	.55	<b>Full Load Torque</b>	2.701 LB-FT		
<b>Volts</b>	110/220	<b>Start Configuration</b>	direct on line		
<b>Full Load Amps</b>	7/3.5	<b>Breakdown Torque</b>	7.59 LB-FT		
<b>R.P.M.</b>	1450	<b>Pull-up Torque</b>	6 LB-FT		
<b>Hz</b>	50 <b>Phase</b>	1	<b>Locked-rotor Torque</b>	7.56 LB-FT	
<b>NEMA Design Code</b>	- <b>KVA Code</b>	H	<b>Starting Current</b>	21.6 A	
<b>Service Factor (S.F.)</b>		1.25	<b>No-load Current</b>	1.62 A	
<b>NEMA Nom. Eff.</b>	77.1 <b>Power Factor</b>	92	<b>Line-line Res. @ 25°C</b>	3.9889 Ω A Ph 2.2339 Ω B Ph	
<b>Rating - Duty</b>		40C AMB-CONT	<b>Temp. Rise @ Rated Load</b>	35°C	
<b>S.F. Amps</b>		8.6/4.3	<b>Temp. Rise @ S.F. Load</b>	44°C	

**Load Characteristics 220 V, 50 Hz, 0.55 KW**

<b>% of Rated Load</b>	<b>25</b>	<b>50</b>	<b>75</b>	<b>100</b>	<b>125</b>	<b>150</b>	<b>S.F.</b>
<b>Power Factor</b>	68	82	88	92	94	95	94
<b>Efficiency</b>	54.2	70.6	77.1	79.4	79.1	77.4	79.1
<b>Speed</b>	1486.5	1476.1	1464.4	1451	1435.5	1416.7	1436
<b>Line amperes</b>	1.8	2.23	2.8	3.46	4.23	5.11	4.23

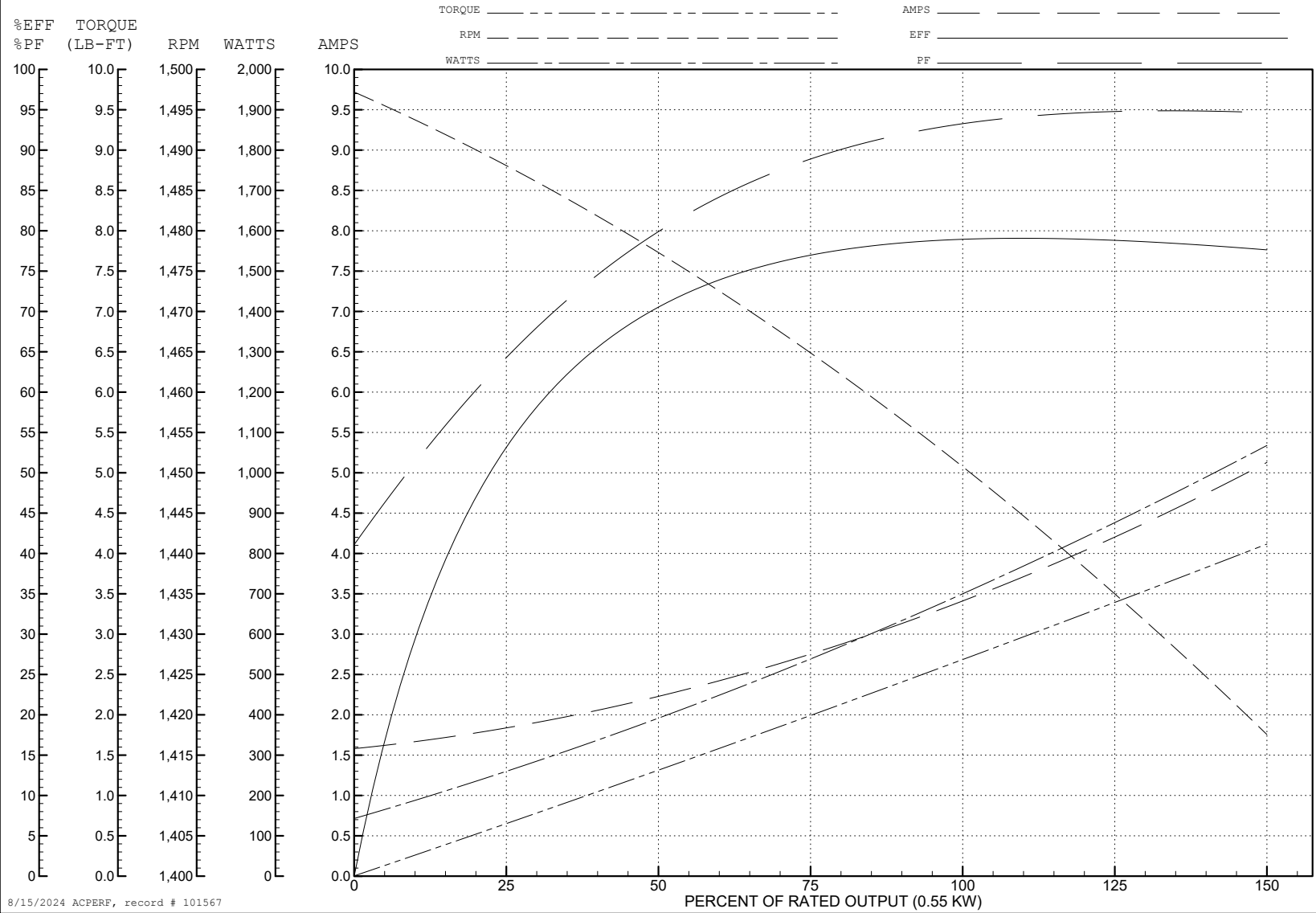
ABB Motors and Mechanical Inc.

WINDING # 35WGG603

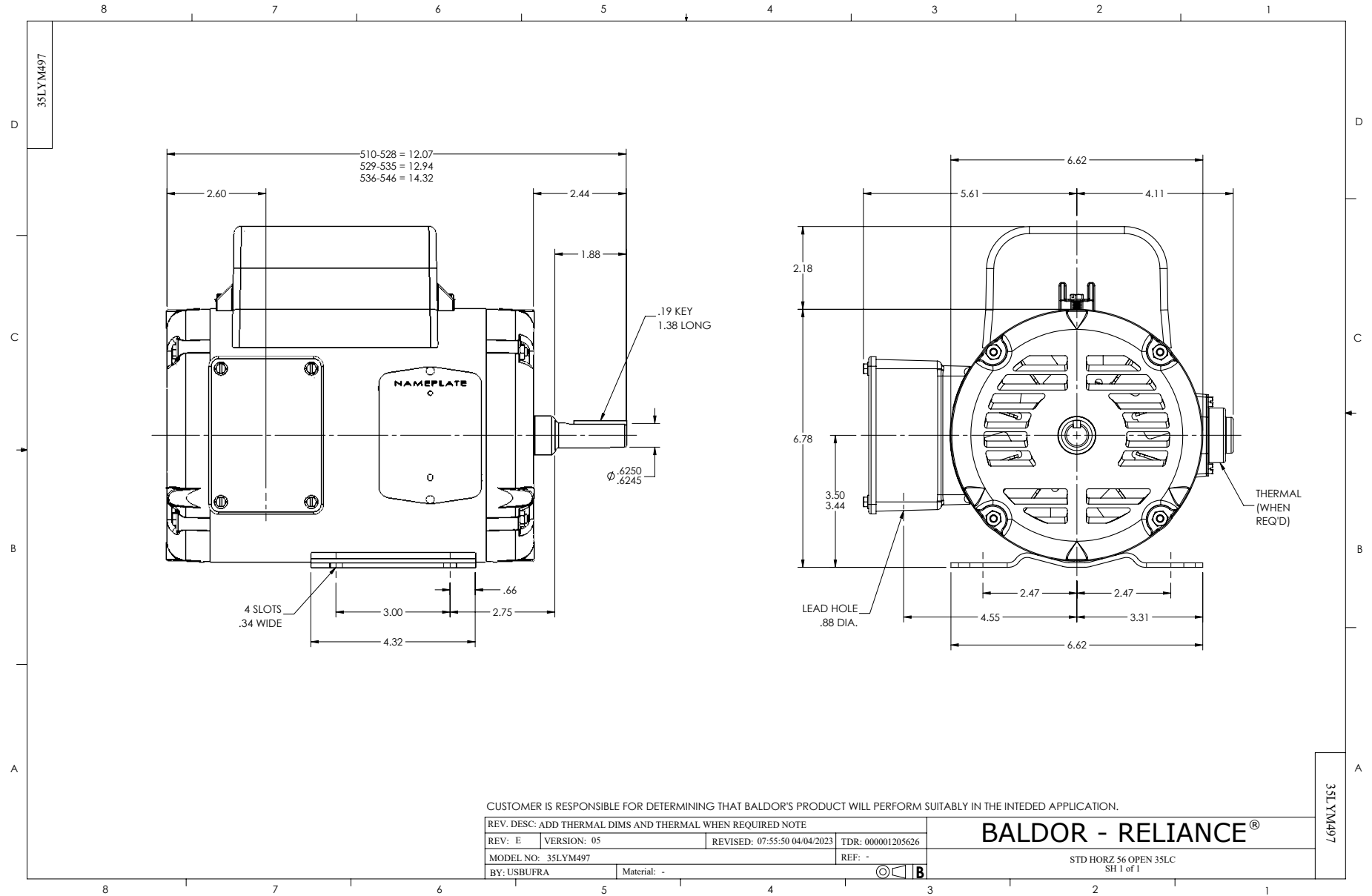
0.55 KW 1 PH 50 HZ 1450 RPM 220 V 3524LC

Typical performance - not guaranteed values.

TORQUES (LB-FT): PO=7.59 PU=6 LR=7.56 LRA=21.6

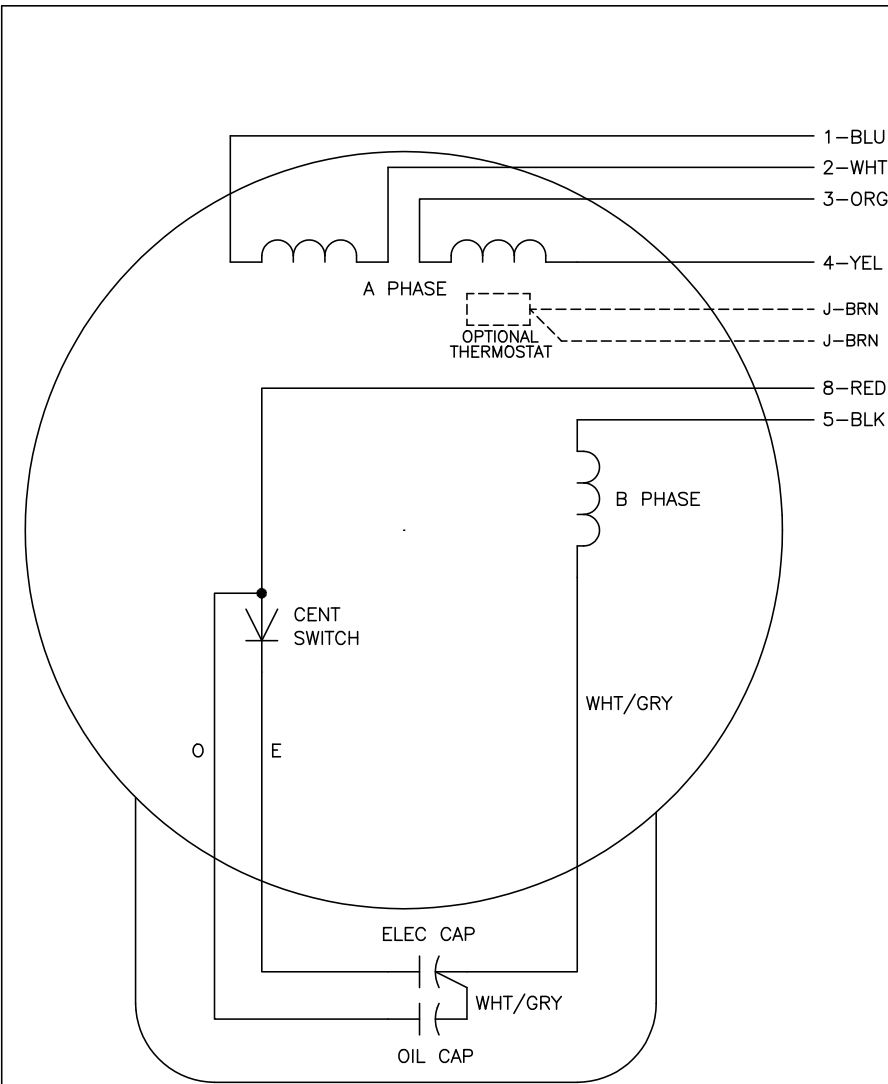


8/15/2024 ACPERF, record # 101567





CD0055



	LINE A	LINE B	JOIN
HIGH STD	1	4,5	2,3,8
HIGH OPP	1	4,8	2,3,5
LOW STD	1,3,8	2,4,5	-
LOW OPP	1,3,5	2,4,8	-

**NOTES:**

1. STANDARD ROTATION IS CCW FACING END OPPOSITE SHAFT EXTENSION.
2. OPTIONAL THERMOSTAT IS PROVIDED WHEN SPECIFIED.
3. MULTIPLE CAPACITORS ARE CONNECTED IN PARALLEL UNLESS OTHERWISE SPECIFIED.
4. LEAD COLORS ARE OPTIONAL. LEADS MUST ALWAYS BE NUMBERED AS SHOWN.

CD0055

REV. DESC: REVISE TO SHOW OPTIONAL COLORS			
REV. LTR: D	BY: JLP	REVISED: 04/08/99 1:17	TDR: 0178636
C00000		FILE: AAA00007414	MDL: -
		MTL: -	

**BALDOR ELECTRIC Co.**

TYPE LC, DV, REV, 6 LEADS