

ABB BALDOR RELIANCE III

Customer information packet

L1206-50

.33/KW .25, 1440RPM, 1PH, 50HZ, 48, 3418LC, OP

Class - None

Division - Not Applicable

Specifications

Enclosure	OPEN
Frame	48
Frame Material	Steel
Frequency	50.00 Hz
Haz Area Class and Group	None
Haz Area Division	Not Applicable
Motor Letter Type	Cap Start, Cap Run
Output @ Frequency	.250 KW @ 50 HZ
Phase	1
Synchronous Speed @ Frequency	1500 RPM @ 50 HZ
Voltage @ Frequency	110.0 V @ 50 HZ 220.0 V @ 50 HZ
Agency Approvals	CE CURUSEEV WEEE
Ambient Temperature	40 °C
Auxiliary Box	NO AUXILLARY BOX
Auxiliary Box Lead Termination	None
Base Indicator	Rigid
Bearing Grease Type	Polyrex EM (-20F +300F)
Blower	None
Current @ Voltage	2.000 A @ 220.0 V 4.000 A @ 110.0 V
Design Code	-
Drip Cover	No Drip Cover
Duty Rating	CONT
Efficiency @ 100% Load	68.5 %
Electrically Isolated Bearing	Not Electrically Isolated
Feedback Device	NO FEEDBACK
Front Shaft Indicator	None
Heater Indicator	No Heater
High Voltage Full Load Amps	2.0 a

Part Detail

Revision	E
Type	AC
Mech. spec.	34F351
Base	
Status	PRD/A
Elec. spec.	34WGR753
Layout	34LYF351
Eff. date	07-07-2025
CD Diagram	CD0055
Poles	04
Leads	6#18
Proprietary	False
Created date	04-26-2023

Insulation Class	B
Inverter Code	Not Inverter
KVA Code	K
Lifting Lugs	No Lifting Lugs
Locked Bearing Indicator	No Locked Bearing
Motor Lead Quantity/Wire Size	6 @ 18 AWG
Motor Lead Termination	Flying Leads
Motor Standards	NEMA
Motor Type	3418LC
Mounting Arrangement	F1
Number of Poles	4
Overall Length	9.76 IN
Power Factor	81
Product Family	General Purpose
Pulley End Bearing Type	Ball
Pulley Face Code	Standard
Pulley Shaft Indicator	Standard
Rodent Screen	None
RoHS Status	ROHS COMPLIANT
Service Factor	1.35
Shaft Diameter	0.500 IN
Shaft Ground Indicator	No Shaft Grounding
Shaft Rotation	Reversible
Shaft Slinger Indicator	No Slinger
Speed	1440 rpm
Speed Code	Single Speed
Starting Method	Direct on line
Thermal Device - Bearing	None
Thermal Device - Winding	None
Vibration Sensor Indicator	No Vibration Sensor
Winding Thermal 1	None
Winding Thermal 2	None

Nameplate

NP4310L									
CAT.NO.	L1206-50								
SPEC.	34F351R753								
HP	.33/KW .25					PH	1		
VOLTS	110/220								
AMPS	4/2								
R.P.M. (1/MIN)	1440								
FRAME	48		HZ	50		I.P.	23		
SER.F.	1.35	CODE	K	DES.	-	CLASS	B		
F.L. AVG. EFF.	68.5		P.F.	81					
CC			USABLE AT 208V			N/A			
RATING	40C AMB-S1 CONT			WT.	11KG				
DE	6203	ODE	6203						
ENCL	OPEN	SN							
	SFA 5/2.5 IC01								
	IE2-50HZ 67 (75%),59 (50%)								

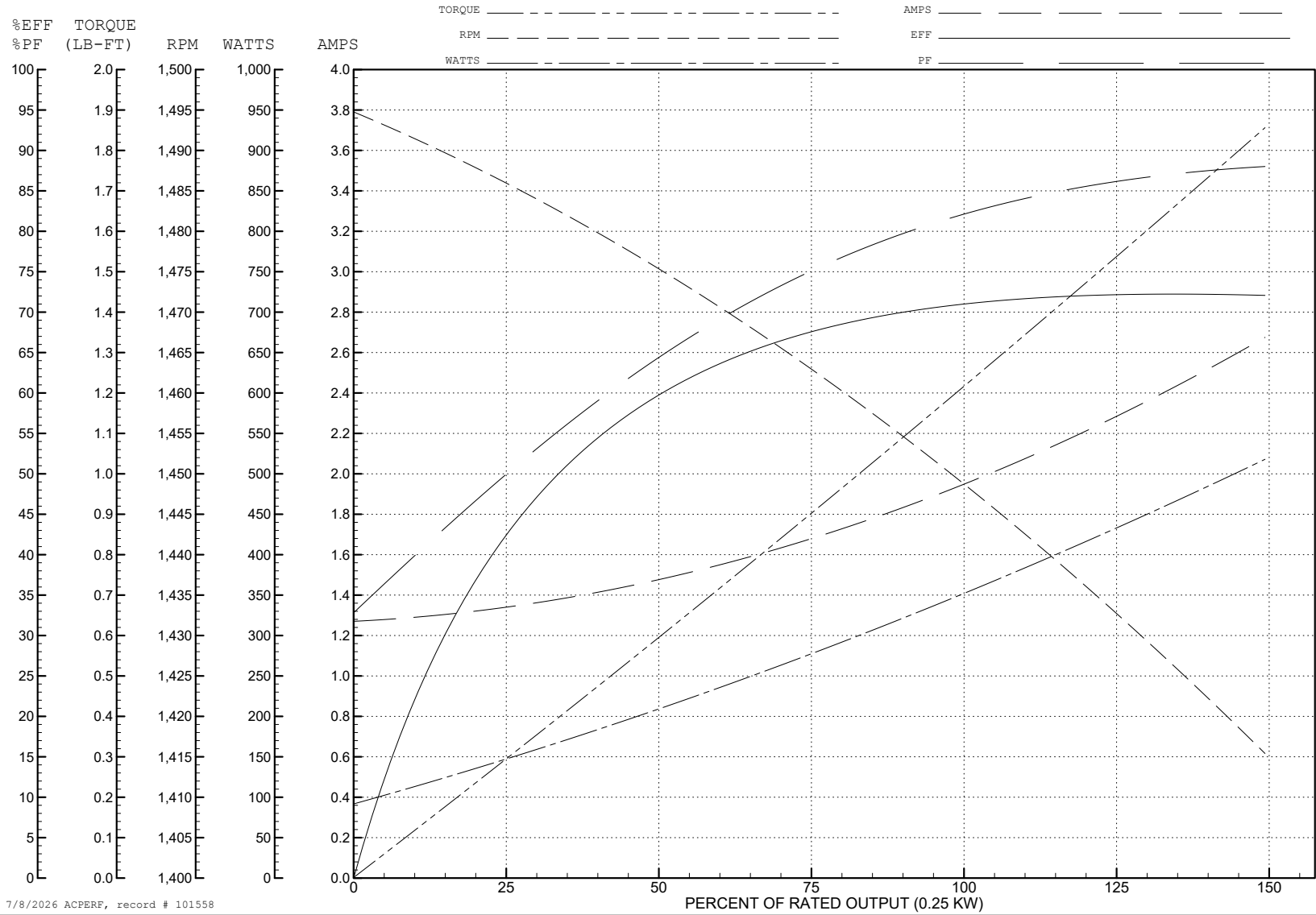
ABB Motors and Mechanical Inc.

WINDING # 34WGR753

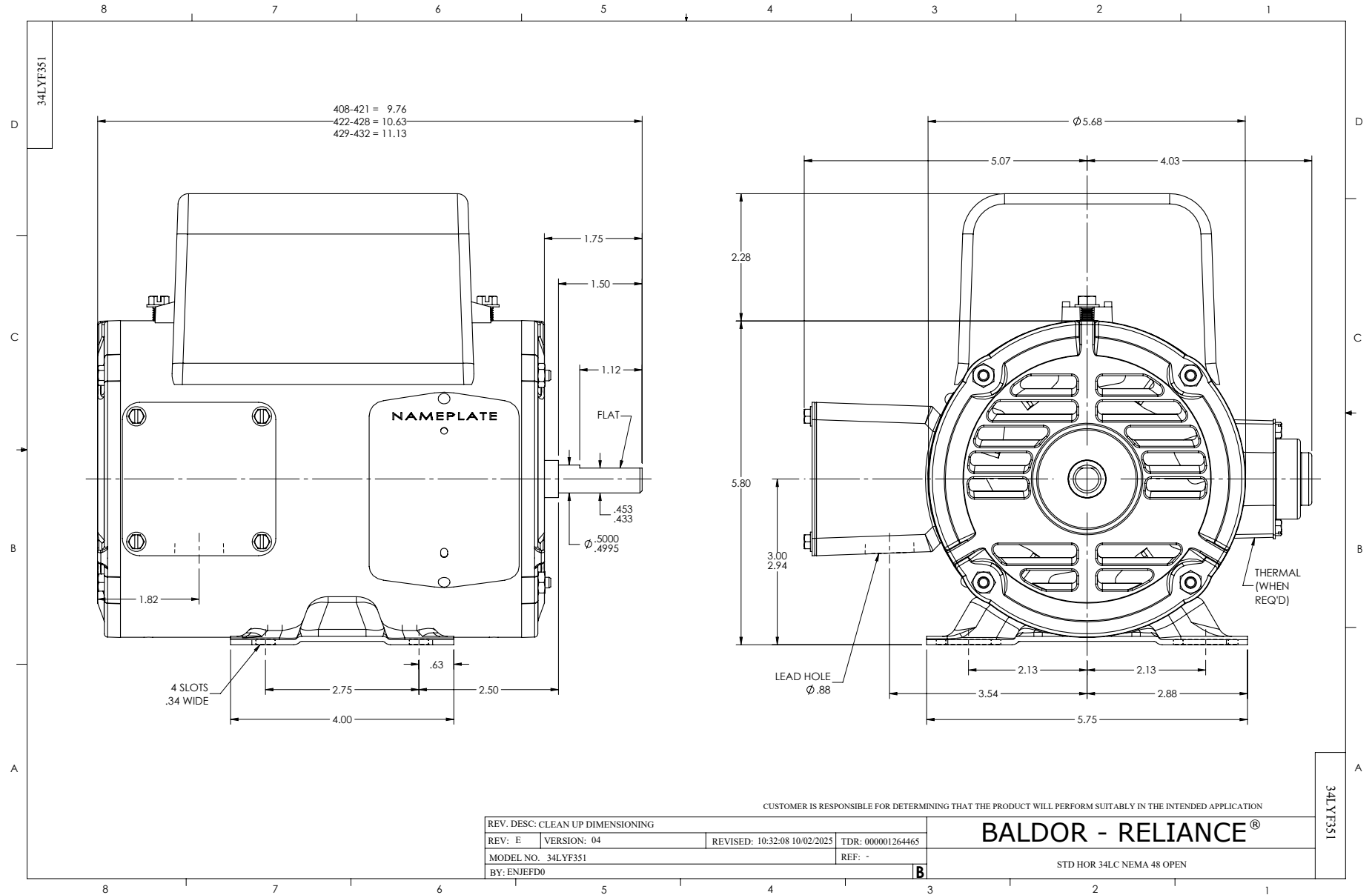
Typical performance - not guaranteed values.

0.25 KW 1 PH 50 HZ 1440 RPM 220 V 3418LC

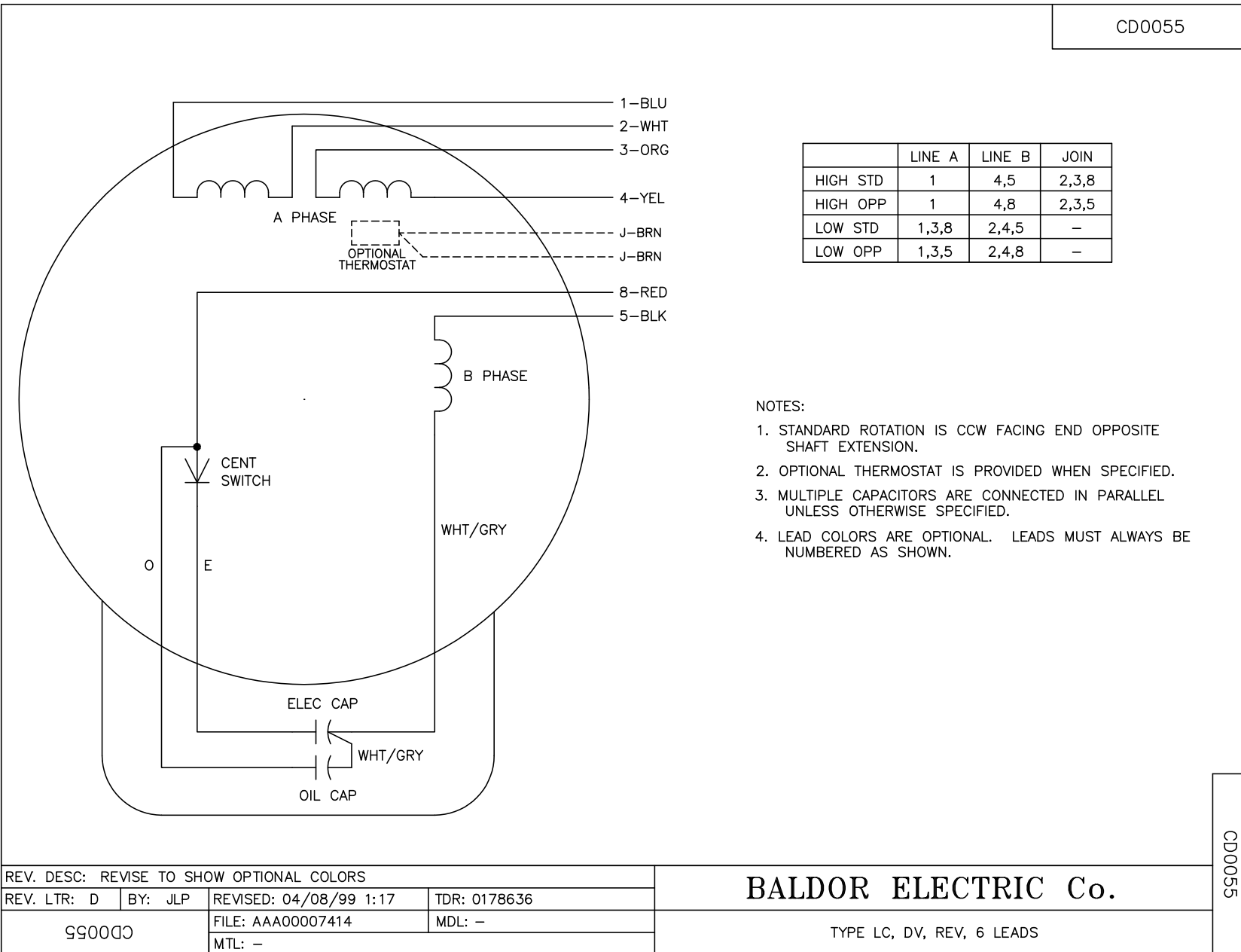
TORQUES (LB-FT): PO=3.6 PU=3.51 LR=4.85 LRA=13.4



7/8/2026 ACPERF, record # 101558



CD0055



	LINE A	LINE B	JOIN
HIGH STD	1	4,5	2,3,8
HIGH OPP	1	4,8	2,3,5
LOW STD	1,3,8	2,4,5	-
LOW OPP	1,3,5	2,4,8	-

NOTES:

1. STANDARD ROTATION IS CCW FACING END OPPOSITE SHAFT EXTENSION.
2. OPTIONAL THERMOSTAT IS PROVIDED WHEN SPECIFIED.
3. MULTIPLE CAPACITORS ARE CONNECTED IN PARALLEL UNLESS OTHERWISE SPECIFIED.
4. LEAD COLORS ARE OPTIONAL. LEADS MUST ALWAYS BE NUMBERED AS SHOWN.

CD0055

REV. DESC: REVISE TO SHOW OPTIONAL COLORS			
REV. LTR: D	BY: JLP	REVISED: 04/08/99 1:17	TDR: 0178636
C00000		FILE: AAA00007414	MDL: -
		MTL: -	

BALDOR ELECTRIC Co.

TYPE LC, DV, REV, 6 LEADS