

**BALDOR • RELIANCE**

---

# Customer information packet

## L1205-50

.33/KW .25, 2900RPM, 1PH, 50HZ, 48, 3416LC, OP

Class - None

Division - Not Applicable

## Specifications

Enclosure	OPEN
Frame	48
Frame Material	Steel
Frequency	50.00 Hz
Haz Area Class and Group	None
Haz Area Division	Not Applicable
Motor Letter Type	Cap Start, Cap Run
Output @ Frequency	.330 HP @ 50 HZ
Phase	1
Synchronous Speed @ Frequency	3000 RPM @ 50 HZ
Voltage @ Frequency	110.0 V @ 50 HZ 220.0 V @ 50 HZ
Agency Approvals	UR CE CSA WEEE
Ambient Temperature	40 °C
Auxillary Box	No Auxillary Box
Auxillary Box Lead Termination	None
Base Indicator	Rigid
Bearing Grease Type	Polyrex EM (-20F +300F)
Blower	None
Design Code	N
Drip Cover	No Drip Cover
Duty Rating	CONT
Electrically Isolated Bearing	Not Electrically Isolated
Feedback Device	NO FEEDBACK
Front Shaft Indicator	None
Heater Indicator	No Heater
Insulation Class	B
Inverter Code	Not Inverter
Lifting Lugs	No Lifting Lugs

## Part detail

Revision	G
Type	AC
Mech. spec.	34F351
Base	
Status	PRD/A
Elec. spec.	34WGR744
Layout	34LYF351
Eff. date	10-16-2023
CD Diagram	CD0055
Poles	02
Leads	6#18
Proprietary	False
Created date	02-10-2023

Locked Bearing Indicator	No Locked Bearing
Motor Lead Quantity/Wire Size	6 @ 18 AWG
Motor Lead Termination	Flying Leads
Motor Standards	NEMA
Motor Type	3416LC
Mounting Arrangement	F1
Number of Poles	2
Overall Length	9.76 IN
Product Family	General Purpose
Pulley End Bearing Type	Ball
Pulley Face Code	Standard
Pulley Shaft Indicator	Standard
Rodent Screen	None
RoHS Status	ROHS COMPLIANT
Service Factor	1.35
Shaft Diameter	0.500 IN
Shaft Ground Indicator	No Shaft Grounding
Shaft Rotation	Reversible
Shaft Slinger Indicator	No Slinger
Speed	2850 rpm
Speed Code	Single Speed
Starting Method	Direct on line
Thermal Device - Bearing	None
Thermal Device - Winding	None
Vibration Sensor Indicator	No Vibration Sensor
Winding Thermal 1	None
Winding Thermal 2	None

**Nameplate**

<b>NP1372L</b>										
<b>CAT.NO.</b>	L1205-50									
<b>SPEC.</b>	34F351R744									
<b>HP</b>	.33/KW .25									
<b>VOLTS</b>	110/220									
<b>AMP</b>	3.4/1.7									
<b>R.P.M. (1/MIN)</b>	2900									
<b>FRAME</b>	48		<b>HZ</b>	50		<b>PH</b>	1			
<b>SER.F.</b>	1.35	<b>CODE</b>	L	<b>DES</b>	-	<b>CL</b>	B			
<b>NEMA-NOM-EFF</b>	71	<b>PF</b>	92							
<b>RATING</b>	40C AMB-S1 CONT									
<b>CC</b>			IP23 11KG IC01							
<b>DE</b>	6203		<b>ODE</b>	6203						
<b>ENCL</b>	OPEN	<b>SN</b>								
	IE2-50HZ 66 (75%),58 (50%)									

**AC Induction Motor Performance Data**

Record # 101548

Typical performance - not guaranteed values

Winding: 34WGR744-R001		Type: 3416LC	Enclosure: OPEN	
<b>Nameplate Data</b>			<b>220 V, 50 Hz: High Voltage Connection</b>	
Rated Output (KW)	.25	Full Load Torque	0.6018 LB-FT	
Volts	110/220	Start Configuration	direct on line	
Full Load Amps	3.4/1.7	Breakdown Torque	2 LB-FT	
R.P.M.	2900	Pull-up Torque	1.77 LB-FT	
Hz	50 Phase	1	Locked-rotor Torque	2.34 LB-FT
NEMA Design Code	- KVA Code	L	Starting Current	14.2 A
Service Factor (S.F.)		1.35	No-load Current	0.803 A
NEMA Nom. Eff.	71 Power Factor	92	Line-line Res. @ 25°C	6.2658 Ω A Ph 4.6856 Ω B Ph
Rating - Duty		40C AMB-CONT	Temp. Rise @ Rated Load	16°C
S.F. Amps		4.4/2.2	Temp. Rise @ S.F. Load	19°C

**Load Characteristics 220 V, 50 Hz, 0.25 KW**

% of Rated Load	25	50	75	100	125	150	S.F.
Power Factor	72	83	88	92	94	95	94
Efficiency	41.5	58.8	67.2	72.1	74.3	74.7	74.5
Speed	2967.1	2947.3	2927.1	2902	2876.4	2846.5	2864
Line amperes	0.955	1.17	1.4	1.7	2.01	2.37	2.15

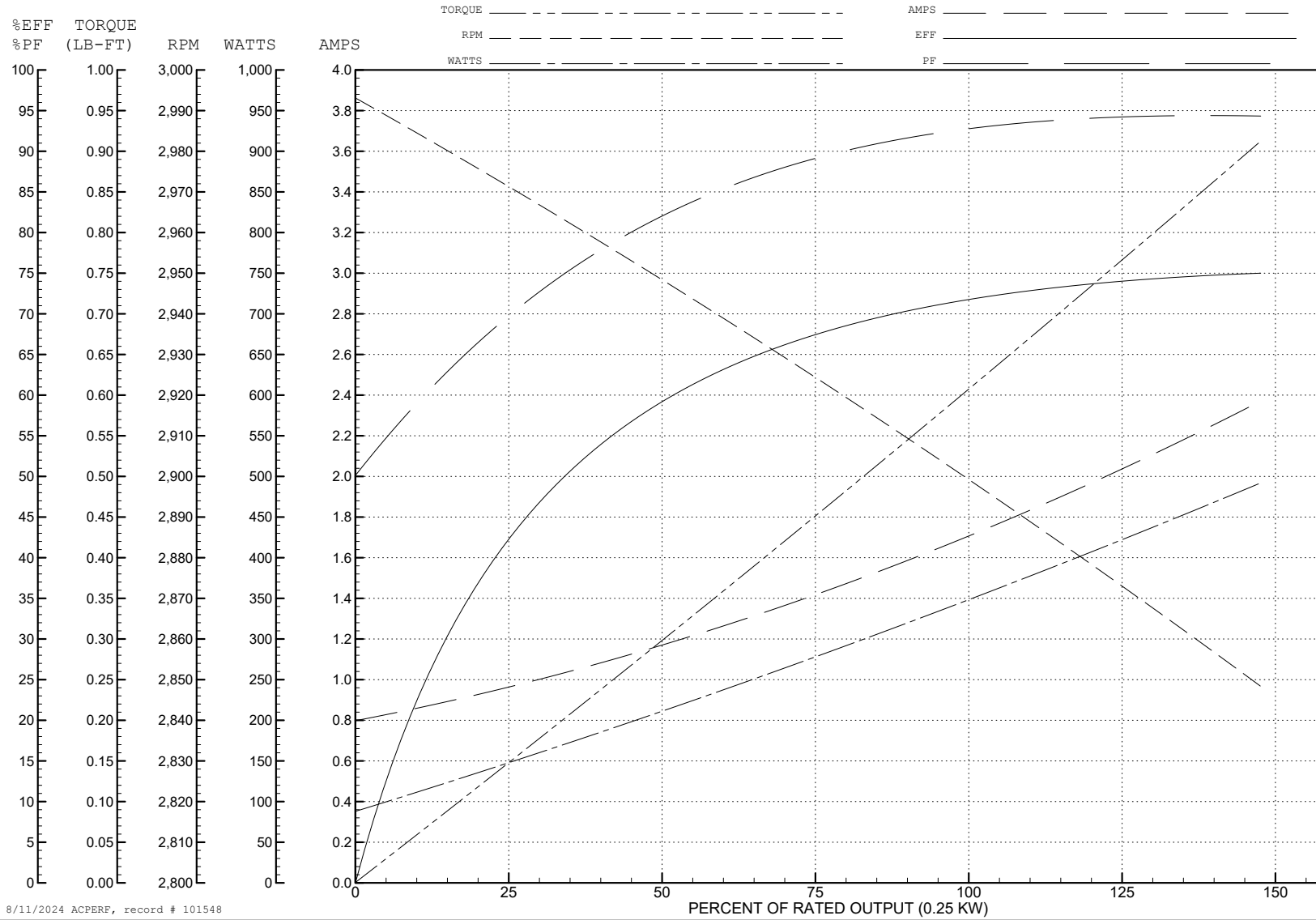
ABB Motors and Mechanical Inc.

WINDING # 34WGR744

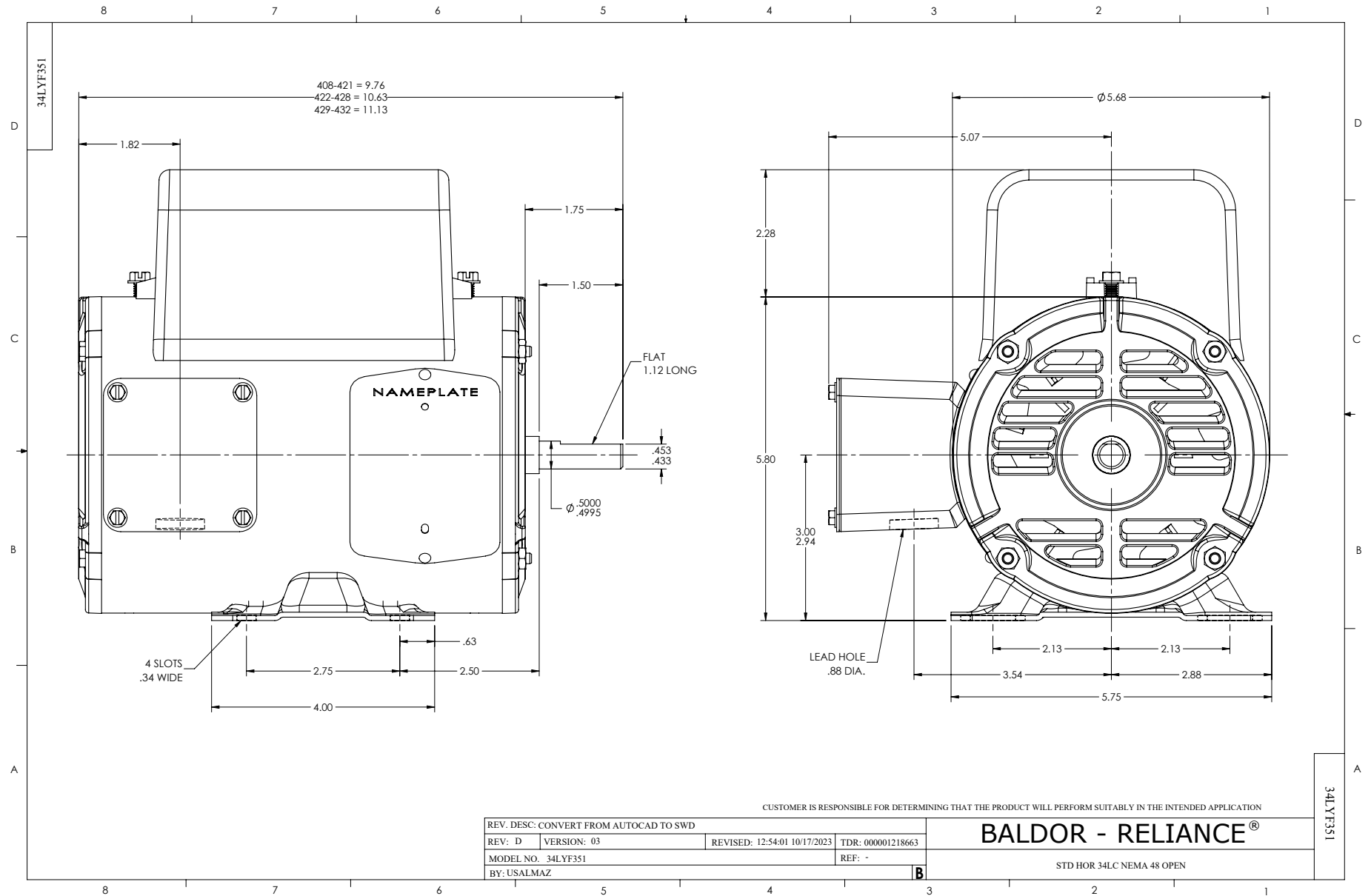
0.25 KW 1 PH 50 HZ 2900 RPM 220 V 3416LC

Typical performance - not guaranteed values.

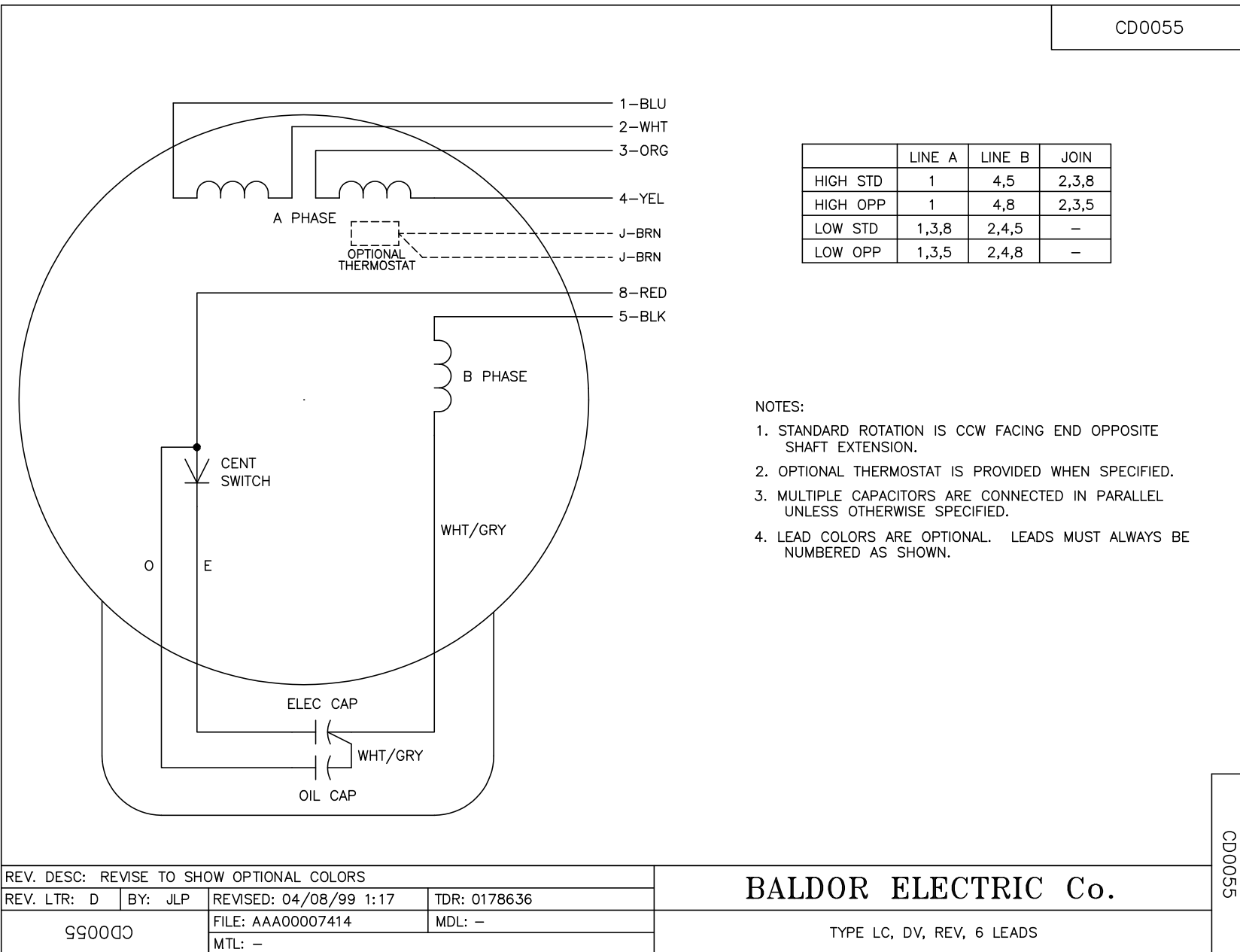
TORQUES (LB-FT): PO=2 PU=1.77 LR=2.34 LRA=14.2



8/11/2024 ACPERF, record # 101548



CD0055



	LINE A	LINE B	JOIN
HIGH STD	1	4,5	2,3,8
HIGH OPP	1	4,8	2,3,5
LOW STD	1,3,8	2,4,5	-
LOW OPP	1,3,5	2,4,8	-

**NOTES:**

1. STANDARD ROTATION IS CCW FACING END OPPOSITE SHAFT EXTENSION.
2. OPTIONAL THERMOSTAT IS PROVIDED WHEN SPECIFIED.
3. MULTIPLE CAPACITORS ARE CONNECTED IN PARALLEL UNLESS OTHERWISE SPECIFIED.
4. LEAD COLORS ARE OPTIONAL. LEADS MUST ALWAYS BE NUMBERED AS SHOWN.

CD0055

REV. DESC: REVISE TO SHOW OPTIONAL COLORS			
REV. LTR: D	BY: JLP	REVISED: 04/08/99 1:17	TDR: 0178636
C00000		FILE: AAA00007414	MDL: -
		MTL: -	

**BALDOR ELECTRIC Co.**

TYPE LC, DV, REV, 6 LEADS