

# ABB BALDOR RELIANCE III



## Customer information packet

L1177T

15HP, 1760RPM, 1PH, 60HZ, 254T, 0956LC, TEFC

Class - None

Division - Not Applicable

**Specifications**

<b>Enclosure</b>	TEFC
<b>Frame</b>	254T
<b>Frame Material</b>	Iron
<b>Frequency</b>	60.00 Hz
<b>Haz Area Class and Group</b>	None
<b>Haz Area Division</b>	Not Applicable
<b>Motor Letter Type</b>	Cap Start, Cap Run
<b>Output @ Frequency</b>	15.000 HP @ 60 HZ
<b>Phase</b>	1
<b>Synchronous Speed @ Frequency</b>	1800 RPM @ 60 HZ
<b>Voltage @ Frequency</b>	230.0 V @ 60 HZ
<b>Agency Approvals</b>	C UR US
<b>Ambient Temperature</b>	40 °C
<b>Auxiliary Box</b>	NO AUXILLARY BOX
<b>Auxiliary Box Lead Termination</b>	None
<b>Base Indicator</b>	Rigid
<b>Bearing Grease Type</b>	Polyrex EM (-20F +300F)
<b>Blower</b>	None
<b>Current @ Voltage</b>	60.000 A @ 230.0 V
<b>Design Code</b>	L
<b>Drip Cover</b>	No Drip Cover
<b>Duty Rating</b>	CONT
<b>Efficiency @ 100% Load</b>	86.5 %
<b>Electrically Isolated Bearing</b>	Not Electrically Isolated
<b>Feedback Device</b>	NO FEEDBACK
<b>Front Face Code</b>	Standard
<b>Front Shaft Indicator</b>	None
<b>Heater Indicator</b>	No Heater
<b>High Voltage Full Load Amps</b>	60.0 a
<b>Insulation Class</b>	F
<b>Inverter Code</b>	Not Inverter
<b>KVA Code</b>	E

**Part Detail**

<b>Revision</b>	AN
<b>Type</b>	AC
<b>Mech. spec.</b>	09G373
<b>Base</b>	
<b>Status</b>	PRD/A
<b>Elec. spec.</b>	09WGZ143
<b>Layout</b>	09LYG373
<b>Eff. date</b>	02-08-2024
<b>CD Diagram</b>	CD1084
<b>Poles</b>	04
<b>Leads</b>	2#6 A PH 12" long,2#12 B PH Y
<b>Proprietary</b>	False
<b>Created date</b>	11-18-2005

<b>Lifting Lugs</b>	Standard Lifting Lugs
<b>Locked Bearing Indicator</b>	Locked Bearing
<b>Motor Lead Exit</b>	Cap Box
<b>Motor Lead Quantity/Wire Size</b>	2 @ 6 AWG, A PH
<b>Motor Lead Termination</b>	Flying Leads
<b>Motor Standards</b>	NEMA
<b>Motor Type</b>	0956LC
<b>Mounting Arrangement</b>	F1
<b>Number of Poles</b>	4
<b>Overall Length</b>	23.36 IN
<b>Power Factor</b>	96
<b>Product Family</b>	General Purpose
<b>Pulley End Bearing Type</b>	Ball
<b>Pulley Face Code</b>	Standard
<b>Pulley Shaft Indicator</b>	Standard
<b>Rodent Screen</b>	None
<b>RoHS Status</b>	ROHS NON-COMPLIANT
<b>Service Factor</b>	1.00
<b>Shaft Diameter</b>	1.625 IN
<b>Shaft Extension Location</b>	Pulley End
<b>Shaft Ground Indicator</b>	No Shaft Grounding
<b>Shaft Rotation</b>	Reversible
<b>Shaft Slinger Indicator</b>	Shaft Slinger
<b>Speed</b>	1760 rpm
<b>Speed Code</b>	Single Speed
<b>Starting Method</b>	Direct on line
<b>Thermal Device - Bearing</b>	None
<b>Thermal Device - Winding</b>	Normally Closed Thermostat
<b>Vibration Sensor Indicator</b>	No Vibration Sensor
<b>Winding Thermal 1</b>	None
<b>Winding Thermal 2</b>	None

**Nameplate**

<b>NP1256L</b>										
<b>CAT.NO.</b>	L1177T									
<b>SPEC.</b>	09G373Z143G1									
<b>HP</b>	15									
<b>VOLTS</b>	230									
<b>AMP</b>	60									
<b>RPM</b>	1760									
<b>FRAME</b>	254T	<b>HZ</b>	60		<b>PH</b>	1				
<b>SER.F.</b>	1.00	<b>CODE</b>	E	<b>DES</b>	L	<b>CLASS</b>	F			
<b>NEMA-NOM-EFF</b>	86.5	<b>PF</b>	96							
<b>RATING</b>	40C AMB-CONT									
<b>CC</b>										
<b>DE</b>	6309	<b>ODE</b>	6307							
<b>ENCL</b>	TEFC	<b>SN</b>								

**Accessories**

<b>Part number</b>	<b>Description</b>	<b>Multiplier</b>
09-1309	C FACE KIT	A8

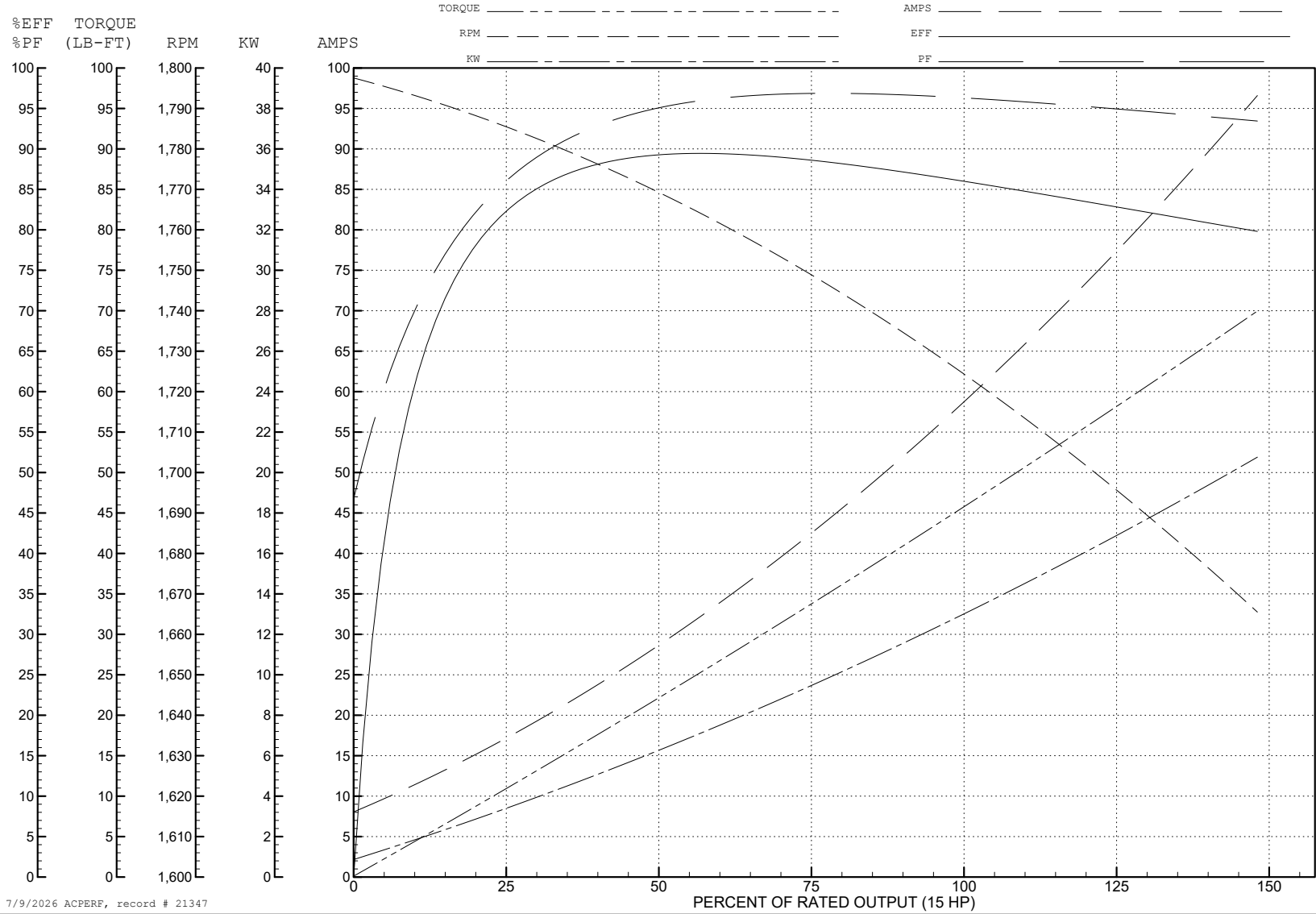
ABB Motors and Mechanical Inc.

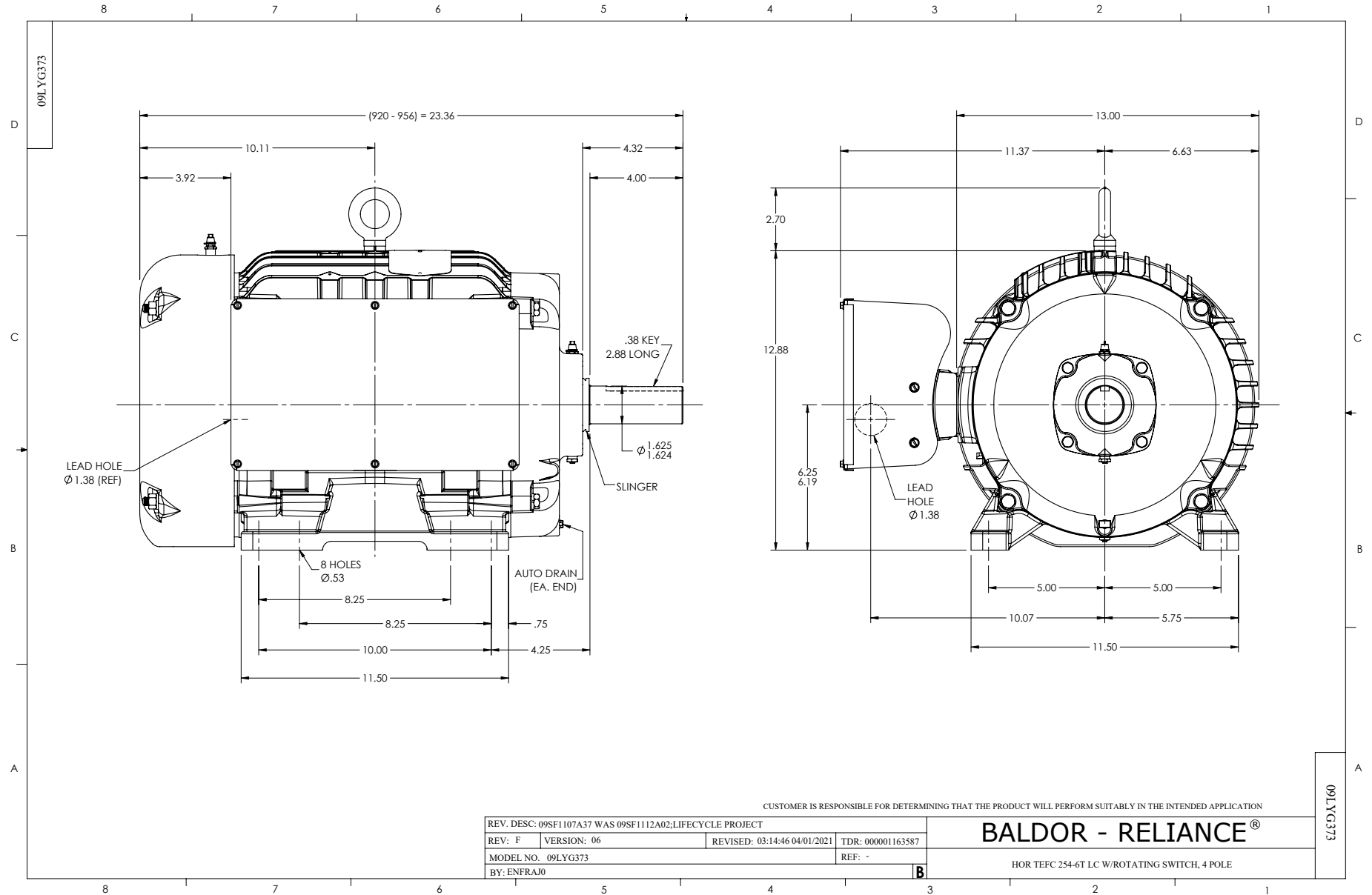
WINDING # 09WGZ143

Typical performance - not guaranteed values.

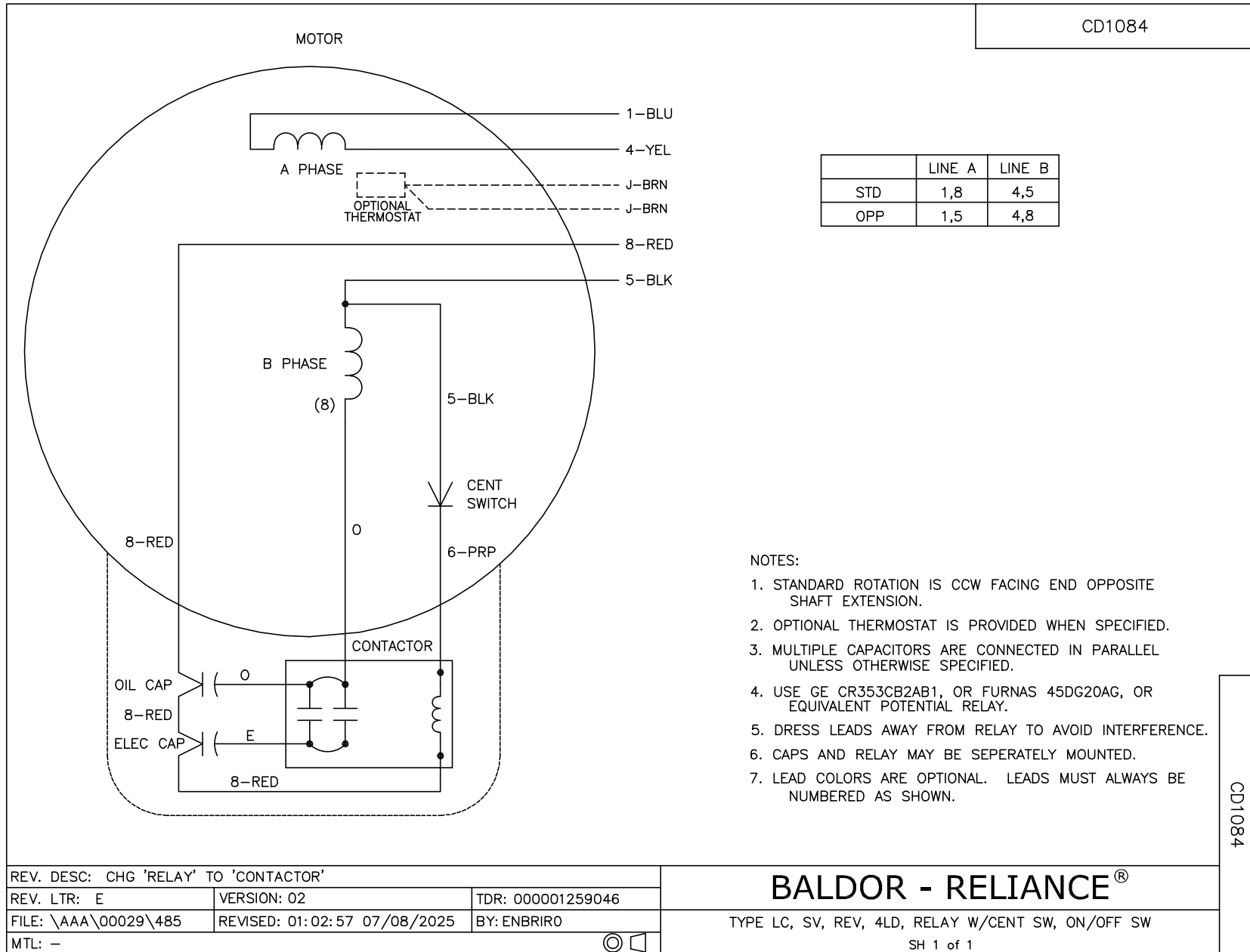
15 HP 1 PH 60 HZ 1760 RPM 230 V 0956LC

TORQUES (LB-FT): PO=114 PU=55 LR=76.7 LRA=304





CD1084



	LINE A	LINE B
STD	1,8	4,5
OPP	1,5	4,8

**NOTES:**

1. STANDARD ROTATION IS CCW FACING END OPPOSITE SHAFT EXTENSION.
2. OPTIONAL THERMOSTAT IS PROVIDED WHEN SPECIFIED.
3. MULTIPLE CAPACITORS ARE CONNECTED IN PARALLEL UNLESS OTHERWISE SPECIFIED.
4. USE GE CR353CB2AB1, OR FURNAS 45DG20AG, OR EQUIVALENT POTENTIAL RELAY.
5. DRESS LEADS AWAY FROM RELAY TO AVOID INTERFERENCE.
6. CAPS AND RELAY MAY BE SEPERATELY MOUNTED.
7. LEAD COLORS ARE OPTIONAL. LEADS MUST ALWAYS BE NUMBERED AS SHOWN.

CD1084

REV. DESC: CHG 'RELAY' TO 'CONTACTOR'		
REV. LTR: E	VERSION: 02	TDR: 000001259046
FILE: \AAA\00029\485	REVISED: 01:02:57 07/08/2025	BY: ENBRIRO
MTL: -		

**BALDOR - RELIANCE®**

TYPE LC, SV, REV, 4LD, RELAY W/CENT SW, ON/OFF SW

SH 1 of 1