



Customer information packet

JXL051522

1.5HP, 3450RPM, 1PH, 60HZ, 56J, 3530L, XPFC, F1

Class - CLI GP D; CLII GP F,G

Division - Division I

Specifications

Enclosure	XPFC
Frame	56J
Frame Material	Steel
Frequency	60.00 Hz
Haz Area Class and Group	CLI GP D; CLII GP F,G
Haz Area Division	Division I
Motor Letter Type	Cap Start, Induction Run
Output @ Frequency	1.500 HP @ 60 HZ
Phase	1
Synchronous Speed @ Frequency	3600 RPM @ 60 HZ
Voltage @ Frequency	230.0 V @ 60 HZ 115.0 V @ 60 HZ 208.0 V @ 60 HZ
Agency Approvals	CSA UL
Ambient Temperature	40 °C
Auxillary Box	No Auxillary Box
Auxillary Box Lead Termination	None
Base Indicator	No Mounting
Bearing Grease Type	Polyrex EM (-20F +300F)
Blower	None
Current @ Voltage	16.000 A @ 115.0 V 8.000 A @ 230.0 V 8.500 A @ 208.0 V
Design Code	L
Drip Cover	No Drip Cover
Duty Rating	CONT
Efficiency @ 100% Load	70.0 %
Electrically Isolated Bearing	Not Electrically Isolated
Feedback Device	NO FEEDBACK
Haz Area Temp Code	T3C
Heater Indicator	No Heater

Part detail

Revision	C
Type	AC
Mech. spec.	
Base	
Status	PRD/A
Elec. spec.	35WG0093
Layout	35LYE790
Eff. date	02-22-2024
CD Diagram	CD0001
Poles	02/02
Leads	4#16 A PH,2#18 B PH
Proprietary	False
Created date	04-14-2021

High Voltage Full Load Amps	8.0 a
Insulation Class	F
Inverter Code	Not Inverter
IP Rating	NONE
KVA Code	J
Lifting Lugs	No Lifting Lugs
Locked Bearing Indicator	Locked Bearing
Motor Lead Termination	Flying Leads
Motor Standards	NEMA
Motor Type	3530L
Mounting Arrangement	F1
Number of Poles	2
Overall Length	16.56 IN
Power Factor	82
Product Family	General Purpose
Pulley Face Code	C-Face
Rodent Screen	None
Service Factor	1.15
Shaft Diameter	0.625 IN
Shaft Ground Indicator	No Shaft Grounding
Shaft Rotation	Reversible
Speed	3450 rpm
Speed Code	Single Speed
Starting Method	Direct on line
Thermal Device - Bearing	None
Thermal Device - Winding	Normally Closed Thermostat
Vibration Sensor Indicator	No Vibration Sensor
Winding Thermal 1	None
Winding Thermal 2	None

Nameplate

NP1426XPSL				
NO.		CC		
SER.				
SPEC.	35-0000-1108			
CAT.NO.	JXL051522			
HP	1.5	T. CODE	T3C	
VOLTS	115/208-230			
AMPS	16/8.5-8			
RPM	3450			
HZ	60	PH	1	CL F
SER.F.	1.15	DES	L	CODE J
RATING	40C AMB-CONT			
FRAME	56J	NEMA-NOM-EFF	70	
	PF	82		
BLANK	NEMA MG-1 PART 5, IP54			

AC Induction Motor Performance Data

Record # 88062

Typical performance - not guaranteed values

Winding: 35WG0199-R001		Type: 3528L		Enclosure: XPFC	
Nameplate Data			115 V, 60 Hz: Low Voltage Connection		
Rated Output (HP)	1.5	Full Load Torque	2.26 LB-FT		
Volts	115/208-230	Start Configuration	Unknown		
Full Load Amps	16/8.5-8	Breakdown Torque	5.73 LB-FT		
R.P.M.	3450	Pull-up Torque	3.83 LB-FT		
Hz	60 Phase	1	Locked-rotor Torque	5.02 LB-FT	
NEMA Design Code	L KVA Code	J	Starting Current	71.1 A	
Service Factor (S.F.)	1.15		No-load Current	7 A	
NEMA Nom. Eff.	70 Power Factor	82	Line-line Res. @ 25°C	0.269 Ω A Ph 1.13 Ω B Ph	
Rating - Duty	40C AMB-CONT		Temp. Rise @ Rated Load	61°C	
S.F. Amps	18/9.9-9		Temp. Rise @ S.F. Load	71°C	
			Locked-rotor Power Factor	87.2	
			Rotor inertia	0.083 lb-ft ²	

Load Characteristics 115 V, 60 Hz, 1.5 HP

% of Rated Load	25	50	75	100	125	150	S.F.
Power Factor	51	69	79	84	87	88	86
Efficiency	60.3	73	77.4	78.8	78.6	77.2	78.7
Speed	3570	3546	3519	3490	3456	3417	3470
Line amperes	7.95	9.69	12	14.7	17.9	21.5	16.6

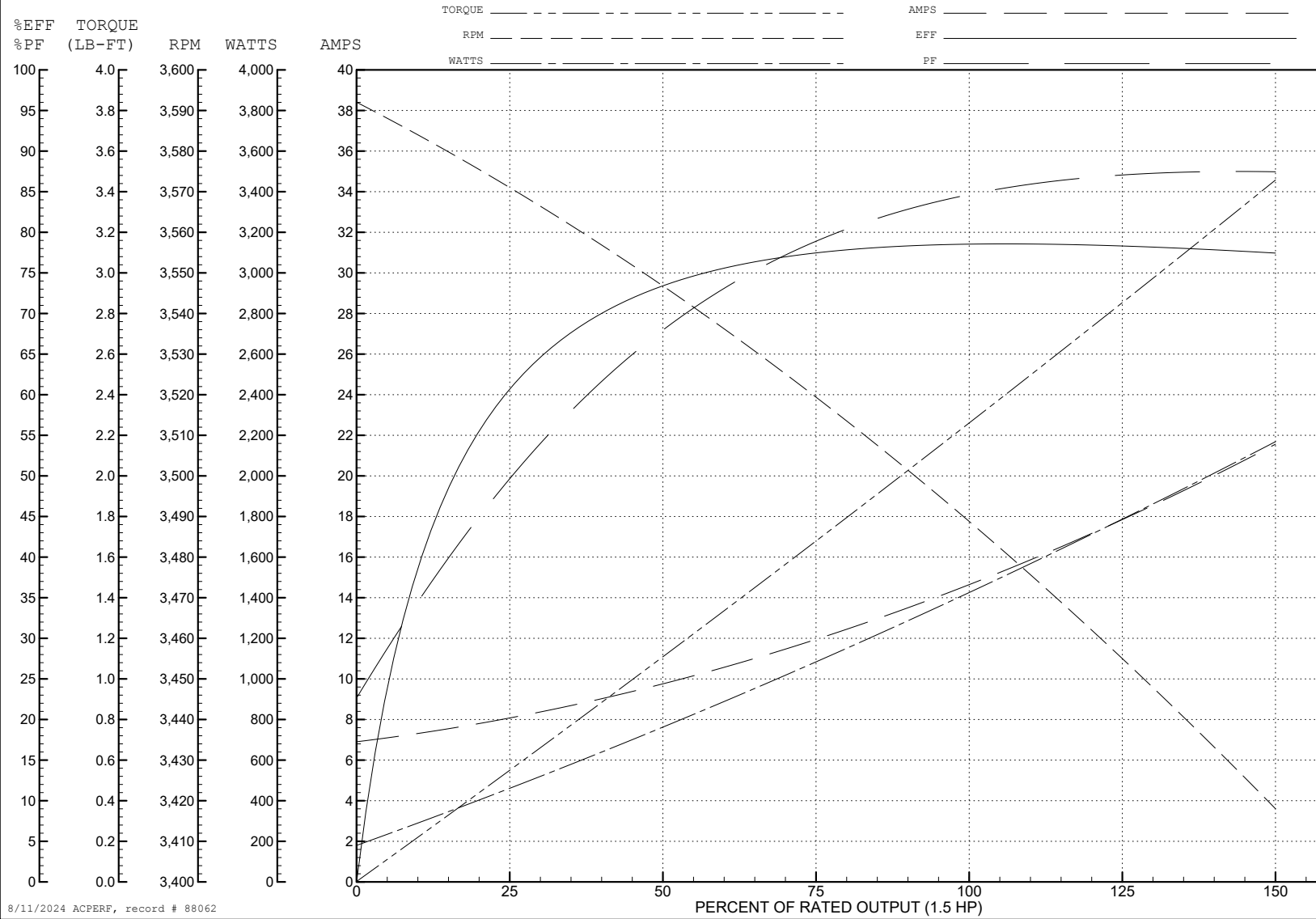
ABB Motors and Mechanical Inc.

WINDING # 35WG0199

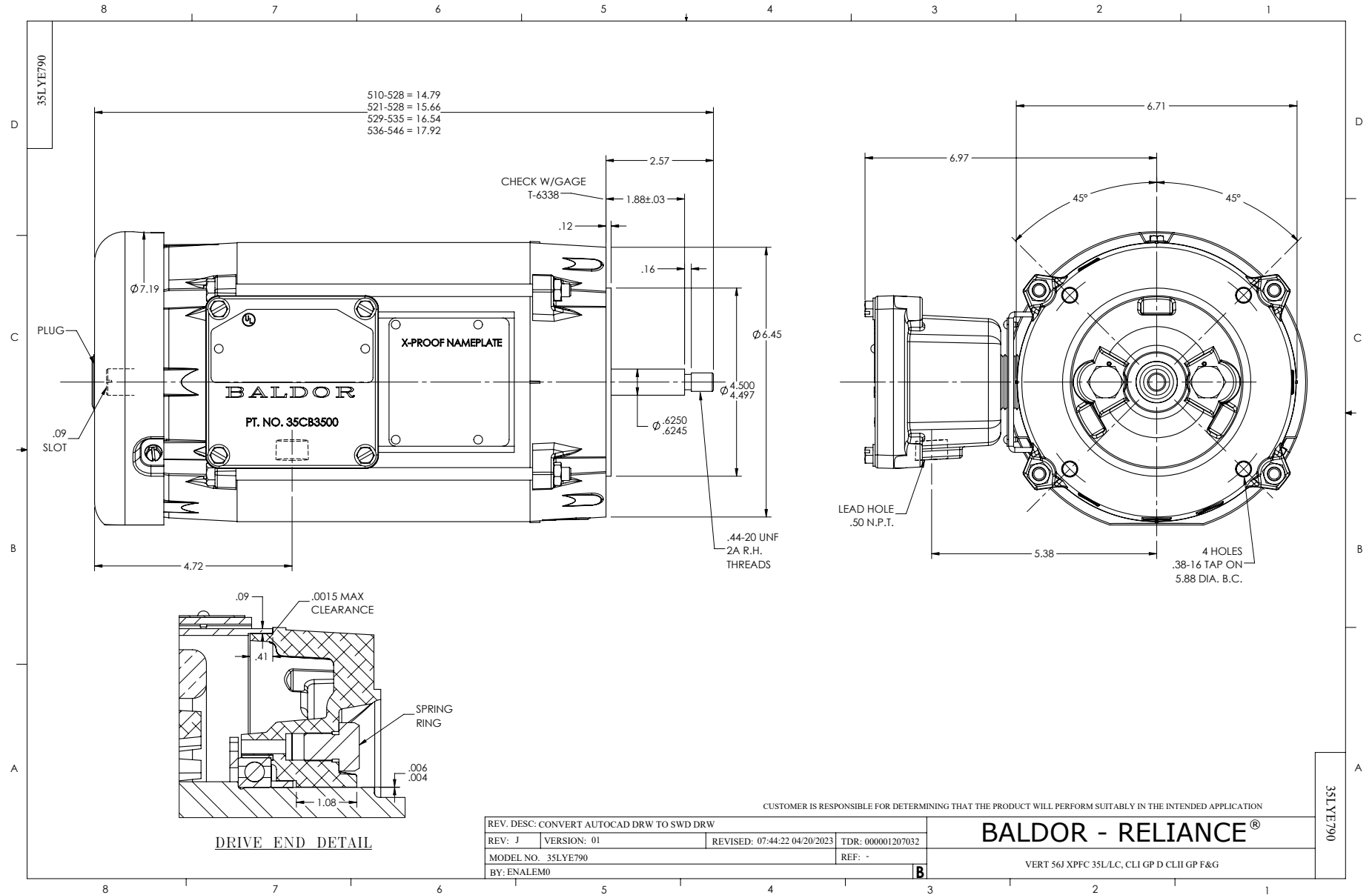
Typical performance - not guaranteed values.

1.5 HP 1 PH 60 HZ 3450 RPM 115 V 3528L

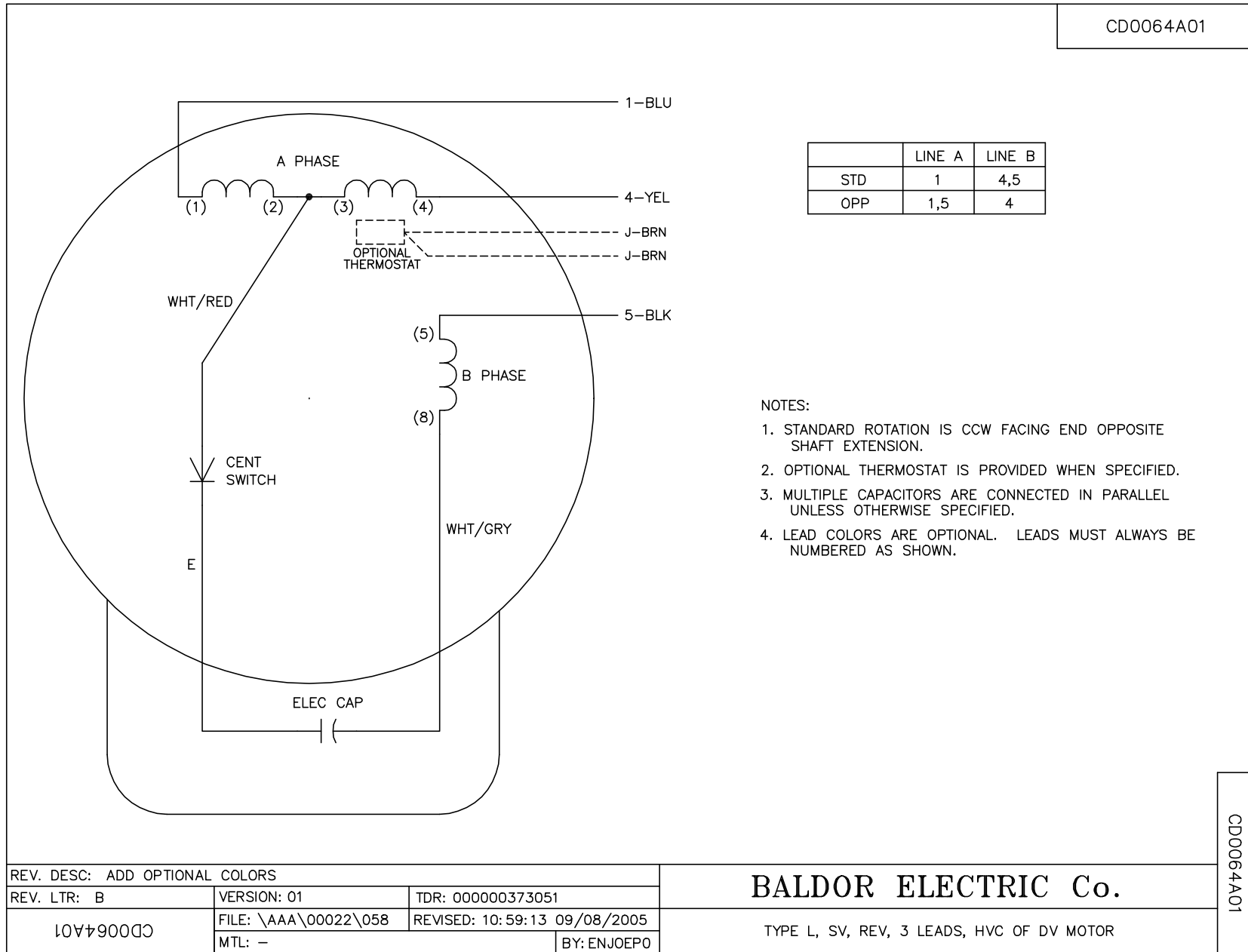
TORQUES (LB-FT): PO=5.73 PU=3.83 LR=5.02 LRA=71.1



8/11/2024 ACPERF, record # 88062



CD0064A01



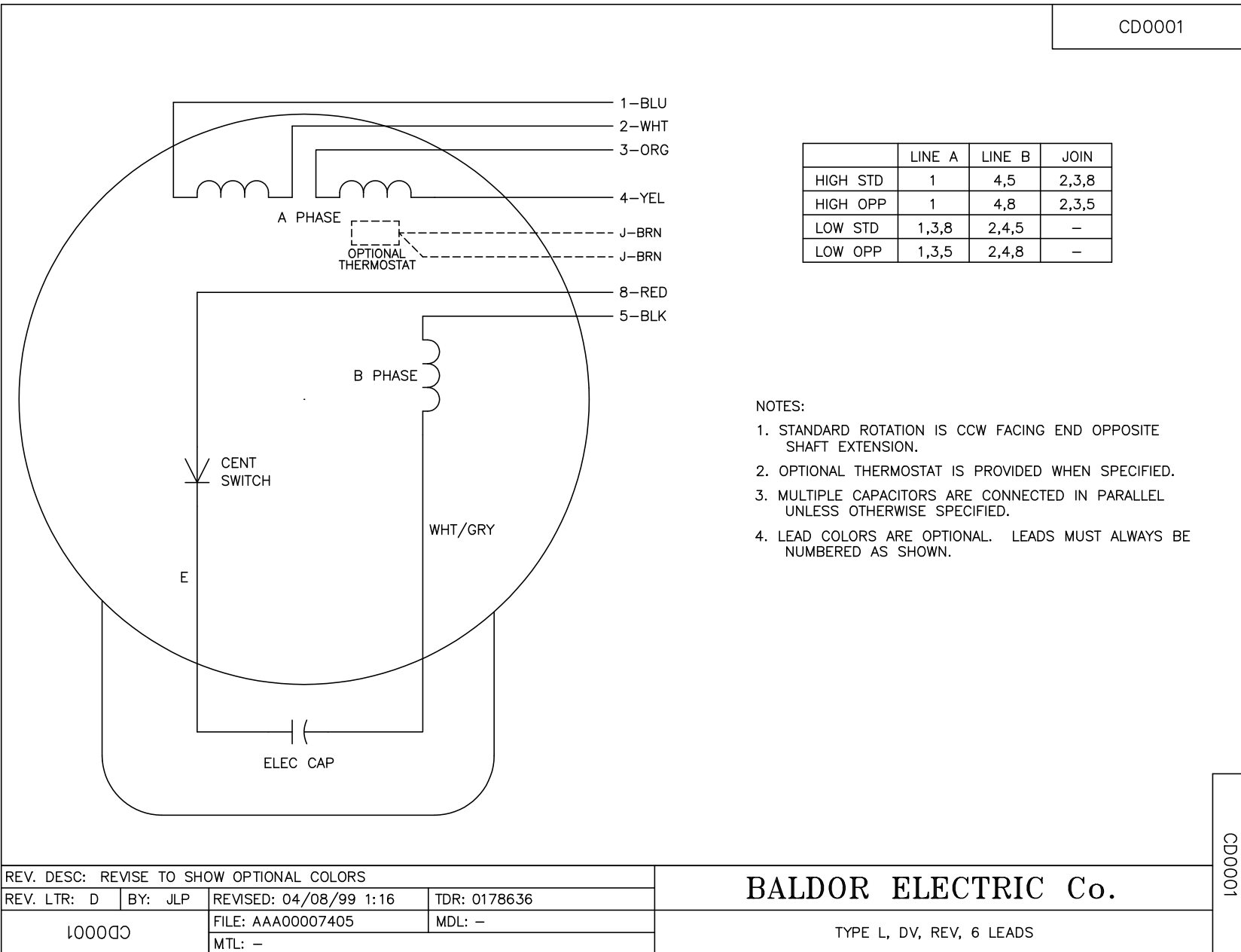
REV. DESC: ADD OPTIONAL COLORS		
REV. LTR: B	VERSION: 01	TDR: 000000373051
CD0064A01	FILE: \AAA\00022\058	REVISED: 10:59:13 09/08/2005
	MTL: -	BY: ENJOEPO

BALDOR ELECTRIC Co.

TYPE L, SV, REV, 3 LEADS, HVC OF DV MOTOR

CD0064A01

CD0001



	LINE A	LINE B	JOIN
HIGH STD	1	4,5	2,3,8
HIGH OPP	1	4,8	2,3,5
LOW STD	1,3,8	2,4,5	-
LOW OPP	1,3,5	2,4,8	-

NOTES:

1. STANDARD ROTATION IS CCW FACING END OPPOSITE SHAFT EXTENSION.
2. OPTIONAL THERMOSTAT IS PROVIDED WHEN SPECIFIED.
3. MULTIPLE CAPACITORS ARE CONNECTED IN PARALLEL UNLESS OTHERWISE SPECIFIED.
4. LEAD COLORS ARE OPTIONAL. LEADS MUST ALWAYS BE NUMBERED AS SHOWN.

CD0001

REV. DESC: REVISE TO SHOW OPTIONAL COLORS			
REV. LTR: D	BY: JLP	REVISED: 04/08/99 1:16	TDR: 0178636
100000		FILE: AAA00007405	MDL: -
		MTL: -	

BALDOR ELECTRIC Co.

TYPE L, DV, REV, 6 LEADS