

**BALDOR • RELIANCE**

---

# Customer information packet

## JXL050522A

.5HP, 3450RPM, 1PH, 60HZ, 56J, 3513L, XPFC, F1

Class - CLI GP D; CLII GP F,G

Division - Division I

## Specifications

|                                |  |
|--------------------------------|--|
| Enclosure                      | XPFC                                   |
| Frame                          | 56J                                    |
| Frame Material                 | Steel                                  |
| Frequency                      | 60.00 Hz                               |
| Haz Area Class and Group       | CLI GP D; CLII GP F,G                  |
| Haz Area Division              | Division I                             |
| Motor Letter Type              | Cap Start, Induction Run               |
| Output @ Frequency             | .500 HP @ 60 HZ                        |
| Phase                          | 1                                      |
| Synchronous Speed @ Frequency  | 3600 RPM @ 60 HZ                       |
| Voltage @ Frequency            | 115.0 V @ 60 HZ<br>230.0 V @ 60 HZ     |
| Agency Approvals               | CSA<br>UL                              |
| Ambient Temperature            | 40 °C                                  |
| Auxillary Box                  | No Auxillary Box                       |
| Auxillary Box Lead Termination | None                                   |
| Base Indicator                 | No Mounting                            |
| Bearing Grease Type            | Polyrex EM (-20F +300F)                |
| Blower                         | None                                   |
| Current @ Voltage              | 3.900 A @ 230.0 V<br>7.800 A @ 115.0 V |
| Design Code                    | N                                      |
| Drip Cover                     | No Drip Cover                          |
| Duty Rating                    | CONT                                   |
| Efficiency @ 100% Load         | 55.0 %                                 |
| Electrically Isolated Bearing  | Not Electrically Isolated              |
| Feedback Device                | NO FEEDBACK                            |
| Haz Area Temp Code             | T3C                                    |
| Heater Indicator               | No Heater                              |
| High Voltage Full Load Amps    | 3.9 a                                  |
| Insulation Class               | B                                      |

## Part detail

|              |                |
|--------------|----------------|
| Revision     | D              |
| Type         | AC             |
| Mech. spec.  |                |
| Base         |                |
| Status       | PRD/A          |
| Elec. spec.  | 35WG0763       |
| Layout       | 35LYE382       |
| Eff. date    | 05-01-2024     |
| CD Diagram   | CD0008         |
| Poles        | 02             |
| Leads        | 6#18,1#16 #4TH |
| Proprietary  | False          |
| Created date | 03-29-2021     |

|                                   |                     |
|-----------------------------------|---------------------|
| <b>Inverter Code</b>              | Not Inverter        |
| <b>IP Rating</b>                  | NONE                |
| <b>KVA Code</b>                   | L                   |
| <b>Lifting Lugs</b>               | No Lifting Lugs     |
| <b>Locked Bearing Indicator</b>   | Locked Bearing      |
| <b>Motor Lead Termination</b>     | Flying Leads        |
| <b>Motor Standards</b>            | NEMA                |
| <b>Motor Type</b>                 | 3513L               |
| <b>Mounting Arrangement</b>       | F1                  |
| <b>Number of Poles</b>            | 2                   |
| <b>Overall Length</b>             | 14.78 IN            |
| <b>Power Factor</b>               | 69                  |
| <b>Product Family</b>             | General Purpose     |
| <b>Pulley Face Code</b>           | C-Face              |
| <b>Rodent Screen</b>              | None                |
| <b>Service Factor</b>             | 1.00                |
| <b>Shaft Diameter</b>             | 0.625 IN            |
| <b>Shaft Ground Indicator</b>     | No Shaft Grounding  |
| <b>Shaft Rotation</b>             | Reversible          |
| <b>Speed</b>                      | 3450 rpm            |
| <b>Speed Code</b>                 | Single Speed        |
| <b>Starting Method</b>            | Direct on line      |
| <b>Thermal Device - Bearing</b>   | None                |
| <b>Thermal Device - Winding</b>   | None                |
| <b>Vibration Sensor Indicator</b> | No Vibration Sensor |
| <b>Winding Thermal 1</b>          | None                |
| <b>Winding Thermal 1 Location</b> | EP                  |
| <b>Winding Thermal 2</b>          | None                |

**Nameplate**

| NP0016XPSL     |                        |                      |     |                |
|----------------|------------------------|----------------------|-----|----------------|
| <b>NO.</b>     |                        | <b>CC</b>            |     |                |
| <b>SER. #</b>  |                        |                      |     |                |
| <b>SPEC</b>    | 35-0000-1063           |                      |     |                |
| <b>CAT.NO.</b> | JXL050522A             |                      |     |                |
| <b>H.P.</b>    | .5                     | <b>T. CODE</b>       | T3C |                |
| <b>VOLTS</b>   | 115/230                |                      |     |                |
| <b>AMPS</b>    | 7.8/3.9                |                      |     |                |
| <b>R.P.M.</b>  | 3450                   |                      |     |                |
| <b>HZ</b>      | 60                     | <b>PH</b>            | 1   | <b>CLASS</b> B |
| <b>SER.F.</b>  | 1.00                   | <b>DES</b>           | N   | <b>CODE</b> L  |
| <b>RATING</b>  | 40C AMB-CONT           |                      |     |                |
| <b>FRAME</b>   | 56J                    | <b>NEMA NOM. EFF</b> | 55  |                |
|                | <b>PF</b>              | 69                   |     |                |
| <b>BLANK</b>   | NEMA MG-1 PART 5, IP54 |                      |     |                |

**AC Induction Motor Performance Data**

Record # 20947

Preliminary Data Sheet

| <b>Winding: 35WG0763-R002</b> |                        | <b>Type: 3513L</b> |   | <b>Enclosure: XPFC</b>     |  |
|-------------------------------|------------------------|--------------------|---|----------------------------|--|
| <b>Nameplate Data</b>         |                        |                    | <b>115 V, 60 Hz:<br/>Low Voltage Connection</b> |                            |  |
| <b>Rated Output (HP)</b>      | .5                     |                    | <b>Full Load Torque</b>                         | 0.751 LB-FT                |  |
| <b>Volts</b>                  | 115/230                |                    | <b>Start Configuration</b>                      | direct on line             |  |
| <b>Full Load Amps</b>         | 7.8/3.9                |                    | <b>Breakdown Torque</b>                         | 1.85 LB-FT                 |  |
| <b>R.P.M.</b>                 | 3450                   |                    | <b>Pull-up Torque</b>                           | 1.84 LB-FT                 |  |
| <b>Hz</b>                     | <b>60 Phase</b>        | 1                  | <b>Locked-rotor Torque</b>                      | 2.9 LB-FT                  |  |
| <b>NEMA Design Code</b>       | <b>N KVA Code</b>      | L                  | <b>Starting Current</b>                         | 41.6 A                     |  |
| <b>Service Factor (S.F.)</b>  | 1                      |                    | <b>No-load Current</b>                          | 5.99 A                     |  |
| <b>NEMA Nom. Eff.</b>         | <b>55 Power Factor</b> | 69                 | <b>Line-line Res. @ 25°C</b>                    | 1.21 Ω A Ph<br>3.33 Ω B Ph |  |
| <b>Rating - Duty</b>          | 40C AMB-CONT           |                    | <b>Temp. Rise @ Rated Load</b>                  | 41°C                       |  |
| <b>S.F. Amps</b>              |                        |                    | <b>Temp. Rise @ S.F. Load</b>                   | 47°C                       |  |

**Load Characteristics 115 V, 60 Hz, 0.5 HP**

| <b>% of Rated Load</b> | <b>25</b> | <b>50</b> | <b>75</b> | <b>100</b> | <b>125</b> | <b>150</b> |
|------------------------|-----------|-----------|-----------|------------|------------|------------|
| <b>Power Factor</b>    | 44        | 55        | 64        | 71         | 76         | 80         |
| <b>Efficiency</b>      | 30.1      | 44.9      | 53        | 57.9       | 60.3       | 61.2       |
| <b>Speed</b>           | 3557      | 3534      | 3508      | 3480       | 3447       | 3408       |
| <b>Line amperes</b>    | 6.24      | 6.61      | 7.18      | 7.86       | 8.75       | 9.76       |

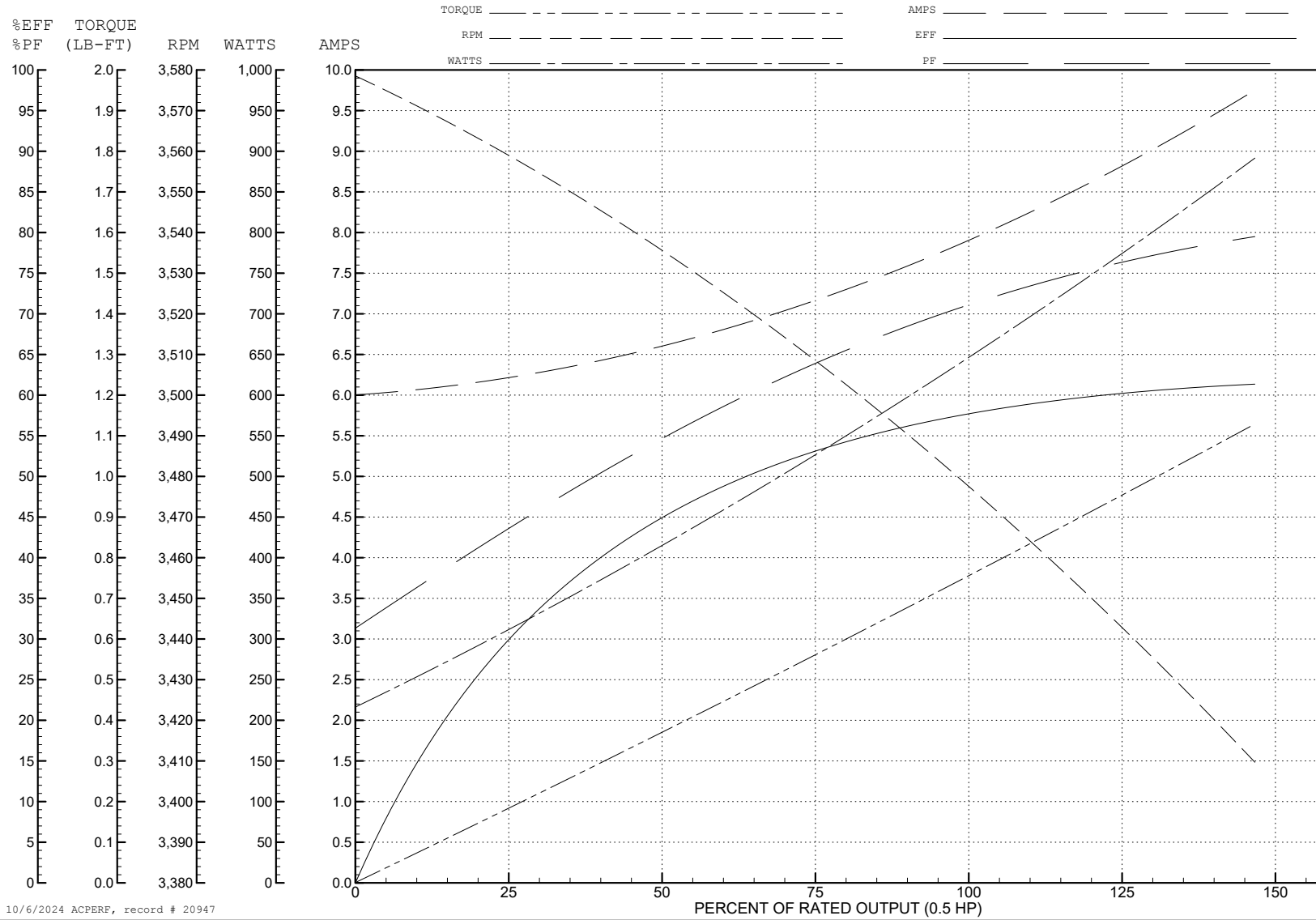
ABB Motors and Mechanical Inc.

WINDING # 35WG0763

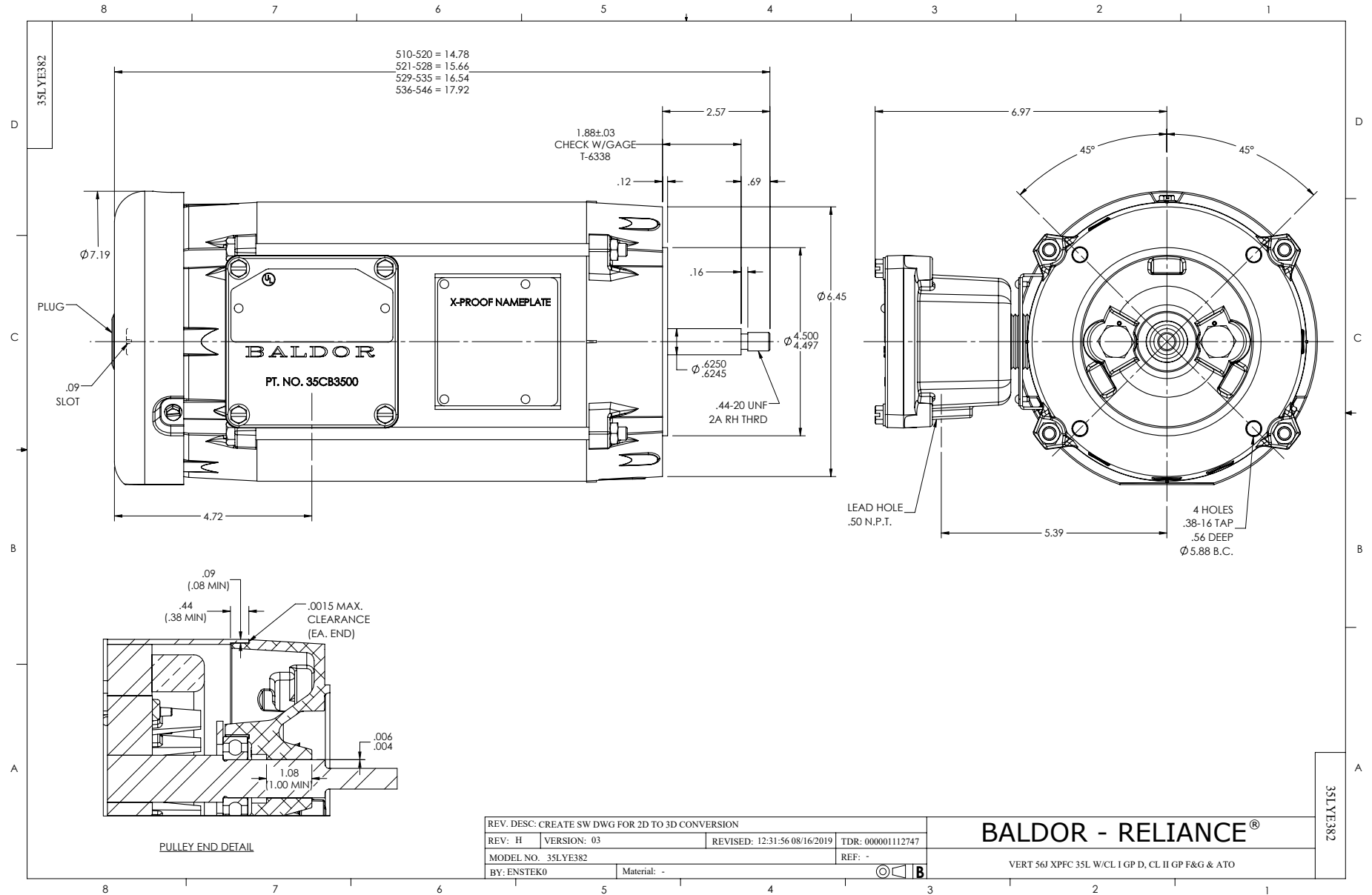
0.5 HP 1 PH 60 HZ 3450 RPM 115 V 3513L

Typical performance - not guaranteed values.

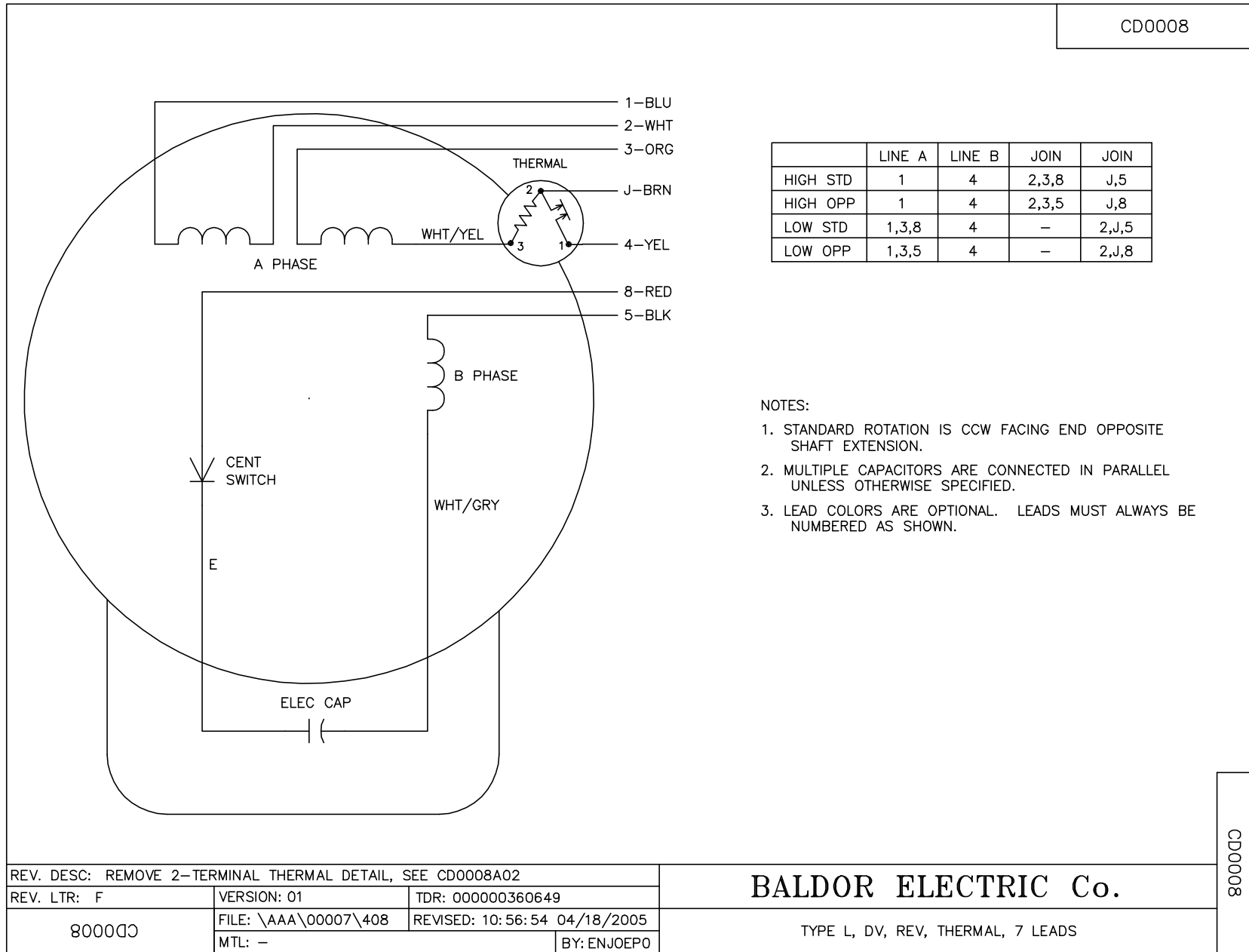
TORQUES (LB-FT): PO=1.85 PU=1.84 LR=2.9 LRA=41.6



10/6/2024 ACPERF, record # 20947



CD0008



|          | LINE A | LINE B | JOIN  | JOIN  |
|----------|--------|--------|-------|-------|
| HIGH STD | 1      | 4      | 2,3,8 | J,5   |
| HIGH OPP | 1      | 4      | 2,3,5 | J,8   |
| LOW STD  | 1,3,8  | 4      | -     | 2,J,5 |
| LOW OPP  | 1,3,5  | 4      | -     | 2,J,8 |

NOTES:

1. STANDARD ROTATION IS CCW FACING END OPPOSITE SHAFT EXTENSION.
2. MULTIPLE CAPACITORS ARE CONNECTED IN PARALLEL UNLESS OTHERWISE SPECIFIED.
3. LEAD COLORS ARE OPTIONAL. LEADS MUST ALWAYS BE NUMBERED AS SHOWN.

|  |                      |                              |
|--|----------------------|------------------------------|
| REV. DESC: REMOVE 2-TERMINAL THERMAL DETAIL, SEE CD0008A02 |                      |                              |
| REV. LTR: F  | VERSION: 01          | TDR: 000000360649            |
| 800000   | FILE: \AAA\00007\408 | REVISED: 10:56:54 04/18/2005 |
|  | MTL: -               | BY: ENJOEPO                  |

BALDOR ELECTRIC Co.

TYPE L, DV, REV, THERMAL, 7 LEADS

CD0008