

**BALDOR • RELIANCE**

---

# Customer information packet

## JWDM3463

.75HP, 3450RPM, 3PH, 60HZ, 56J, 3514M, TEFC, F1

Class - None

Division - Not Applicable

## Specifications

Enclosure	TEFC
Frame	56J
Frame Material	Steel
Frequency	60.00 Hz
Haz Area Class and Group	None
Haz Area Division	Not Applicable
Motor Letter Type	Three Phase
Output @ Frequency	.750 HP @ 60 HZ
Phase	3
Synchronous Speed @ Frequency	3600 RPM @ 60 HZ
Voltage @ Frequency	208.0 V @ 60 HZ 230.0 V @ 60 HZ 460.0 V @ 60 HZ
Agency Approvals	UR CSA
Ambient Temperature	40 °C
Auxillary Box	No Auxillary Box
Auxillary Box Lead Termination	None
Base Indicator	No Mounting
Bearing Grease Type	Polyrex EM (-20F +300F)
Blower	None
Current @ Voltage	1.400 A @ 460.0 V 2.800 A @ 230.0 V 3.000 A @ 208.0 V 3.800 A @ 208.0 V
Design Code	B
Drip Cover	No Drip Cover
Duty Rating	CONT
Efficiency @ 100% Load	68.0 %
Electrically Isolated Bearing	Not Electrically Isolated
Feedback Device	NO FEEDBACK
Front Face Code	Standard

## Part detail

Revision	N
Type	AC
Mech. spec.	35E2235
Base	
Status	PRD/A
Elec. spec.	35WG0081
Layout	35LYE2235
Eff. date	09-11-2023
CD Diagram	CD0005
Poles	02
Leads	9#18
Proprietary	False
Created date	10-15-2013

Front Shaft Indicator	None
Heater Indicator	No Heater
High Voltage Full Load Amps	1.4 a
Insulation Class	F
Inverter Code	Not Inverter
KVA Code	L
Lifting Lugs	No Lifting Lugs
Locked Bearing Indicator	Locked Bearing
Motor Lead Exit	Ko Box
Motor Lead Quantity/Wire Size	9 @ 18 AWG
Motor Lead Termination	Flying Leads
Motor Standards	NEMA
Motor Type	3514M
Mounting Arrangement	F1
Number of Poles	2
Overall Length	12.72 IN
Power Factor	74
Product Family	Wash Down
Pulley End Bearing Type	Sealed Bearing
Pulley Face Code	C-Face
Pulley Shaft Indicator	Ext Thread
Rodent Screen	None
RoHS Status	ROHS COMPLIANT
Service Factor	1.50
Shaft Diameter	0.625 IN
Shaft Extension Location	Pulley End
Shaft Ground Indicator	No Shaft Grounding
Shaft Rotation	Reversible
Shaft Slinger Indicator	Shaft Slinger
Speed	3450 rpm
Speed Code	Single Speed
Starting Method	Direct on line
Thermal Device - Bearing	None
Thermal Device - Winding	None

<b>Vibration Sensor Indicator</b>	<b>No Vibration Sensor</b>
<b>Winding Thermal 1</b>	<b>None</b>
<b>Winding Thermal 2</b>	<b>None</b>

**Nameplate**

<b>NP1496L</b>									
<b>CAT.NO.</b>	JWDM3463								
<b>SPEC.</b>	35E2235-0081G1								
<b>HP</b>	.75								
<b>VOLTS</b>	208-230/460								
<b>AMP</b>	3-2.8/1.4								
<b>RPM</b>	3450								
<b>FRAME</b>	56J		<b>HZ</b>	60		<b>PH</b>	3		
<b>SER.F.</b>	1.50	<b>CODE</b>	L	<b>DES</b>	B	<b>CLASS</b>	F		
<b>NEMA-NOM-EFF</b>	68	<b>PF</b>	74						
<b>RATING</b>	40C AMB-CONT								
<b>CC</b>									
<b>DE</b>	6205		<b>ODE</b>	6203					
<b>ENCL</b>	TEFC	<b>SN</b>							
	SFA 3.8-3.6/1.8								

**AC Induction Motor Performance Data**

Record # 78924

Typical performance - not guaranteed values

<b>Winding: 35WG0081-R059</b>		<b>Type: 3514M</b>		<b>Enclosure: TEFC</b>	
<b>Nameplate Data</b>			<b>460 V, 60 Hz: High Voltage Connection</b>		
<b>Rated Output (HP)</b>	.75	<b>Full Load Torque</b>	1.12 LB-FT		
<b>Volts</b>	208-230/460	<b>Start Configuration</b>	direct on line		
<b>Full Load Amps</b>	3-2.8/1.4	<b>Breakdown Torque</b>	4.98 LB-FT		
<b>R.P.M.</b>	3450	<b>Pull-up Torque</b>	3.71 LB-FT		
<b>Hz</b>	60 <b>Phase</b>	3	<b>Locked-rotor Torque</b>	4.4 LB-FT	
<b>NEMA Design Code</b>	<b>B KVA Code</b>	L	<b>Starting Current</b>	8.85 A	
<b>Service Factor (S.F.)</b>		1.5	<b>No-load Current</b>	0.908 A	
<b>NEMA Nom. Eff.</b>	68 <b>Power Factor</b>	74	<b>Line-line Res. @ 25°C</b>	18.6 Ω	
<b>Rating - Duty</b>	40C AMB-CONT		<b>Temp. Rise @ Rated Load</b>	43°C	
<b>S.F. Amps</b>	3.8-3.6/1.8		<b>Temp. Rise @ S.F. Load</b>	57°C	
			<b>Locked-rotor Power Factor</b>	67.5	
			<b>Rotor inertia</b>	0.0387 LB-FT <sup>2</sup>	

**Load Characteristics 460 V, 60 Hz, 0.75 HP**

<b>% of Rated Load</b>	<b>25</b>	<b>50</b>	<b>75</b>	<b>100</b>	<b>125</b>	<b>150</b>	<b>S.F.</b>
<b>Power Factor</b>	43	58	68	76	80	83	83
<b>Efficiency</b>	41.9	57.7	64.8	69.2	70.7	71.1	71.1
<b>Speed</b>	3559	3534	3507	3475	3441	3402	3402
<b>Line amperes</b>	0.98	1.05	1.18	1.31	1.51	1.71	1.71

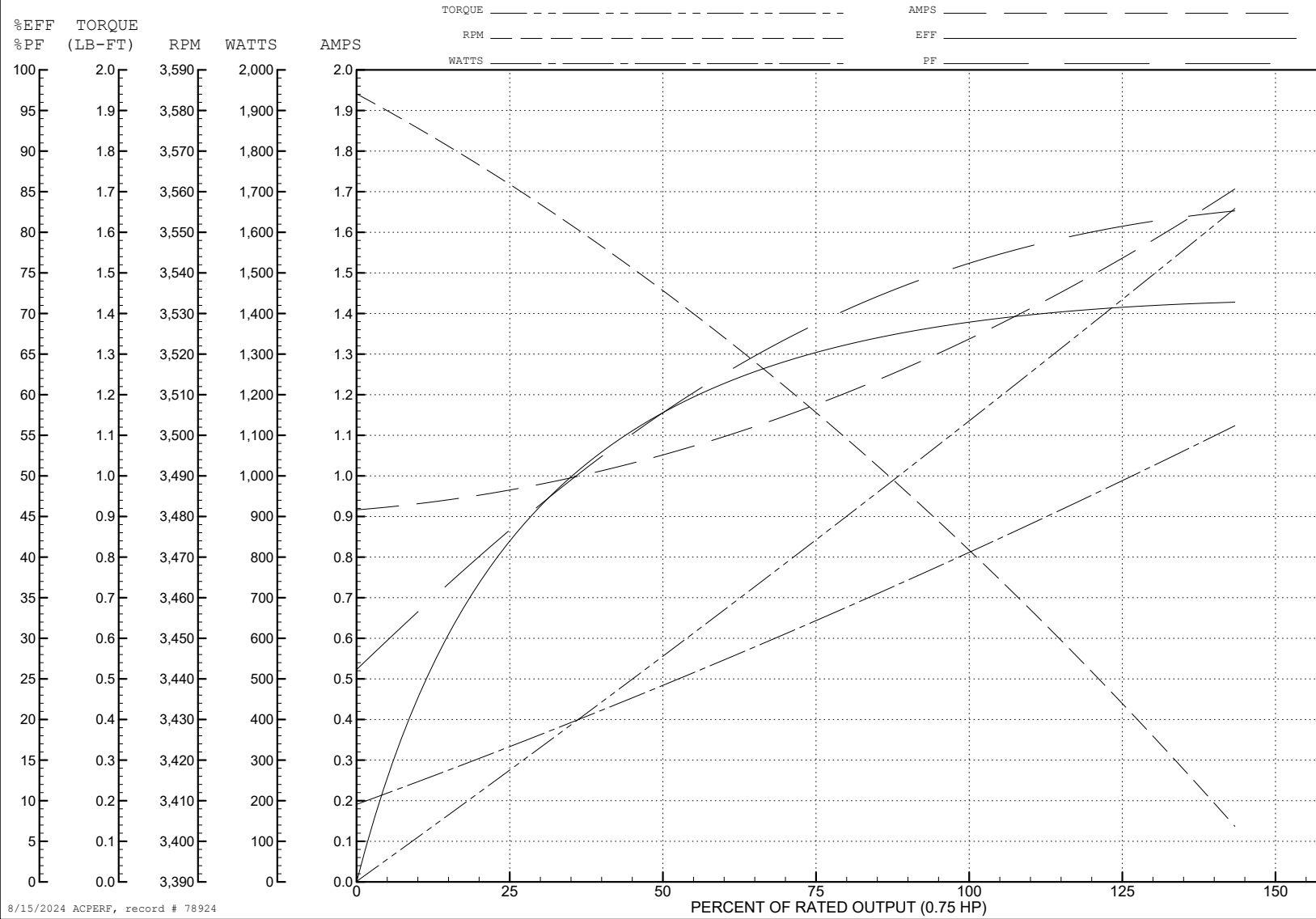
ABB Motors and Mechanical Inc.

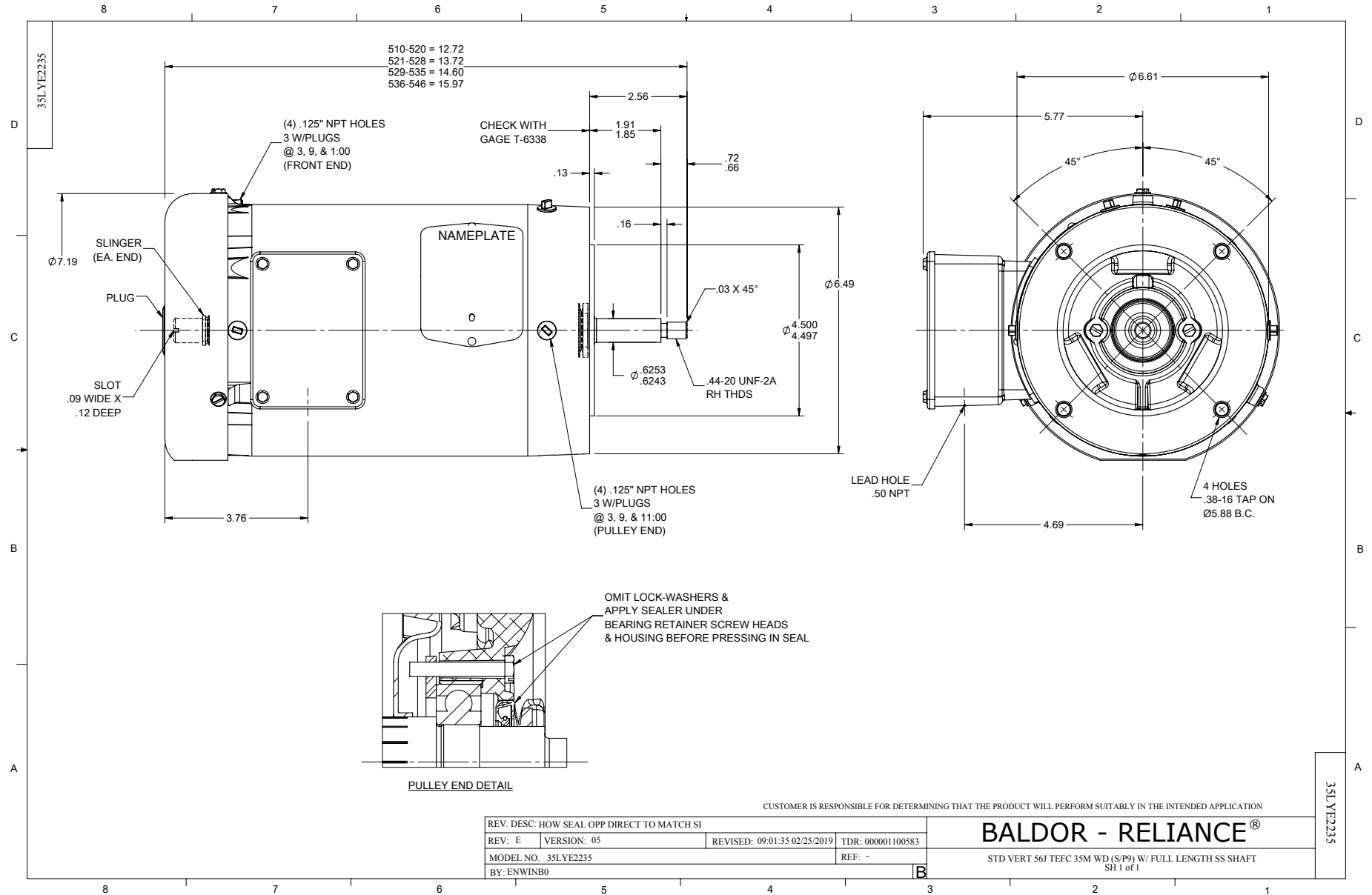
WINDING # 35WG0081

0.75 HP 3 PH 60 HZ 3450 RPM 460 V 3514M

Typical performance - not guaranteed values.

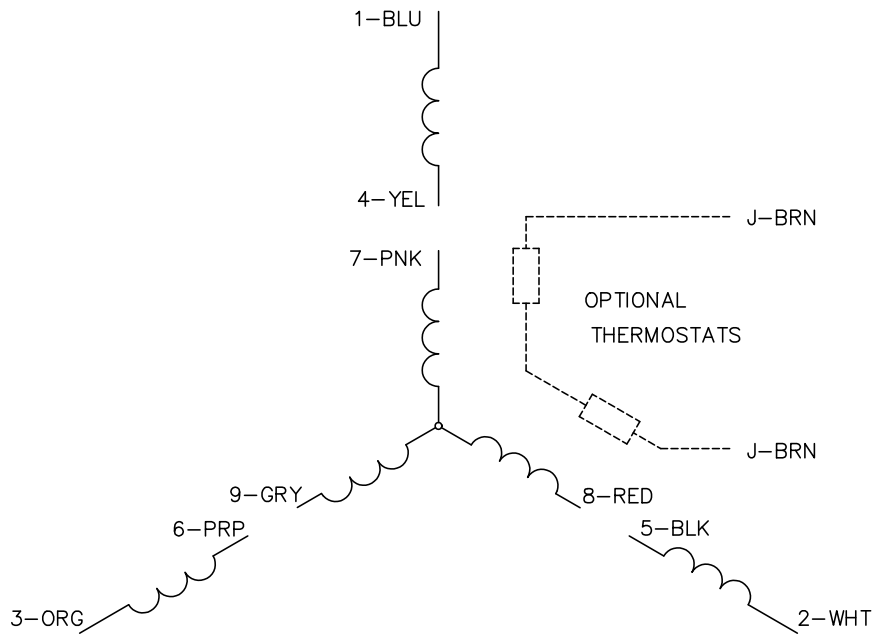
TORQUES (LB-FT): PO=4.98 PU=3.71 LR=4.4 LRA=8.85







CD0005



LOW VOLTAGE (2Y)



LINE

HIGH VOLTAGE (1Y)



LINE

NOTES:

1. INTERCHANGE ANY TWO LINE LEADS TO REVERSE ROTATION.
2. OPTIONAL THERMOSTATS ARE PROVIDED WHEN SPECIFIED.
3. ACTUAL NUMBER OF INTERNAL PARALLEL CIRCUITS MAY BE A MULTIPLE OF THOSE SHOWN ABOVE.
4. LEAD COLORS ARE OPTIONAL. LEADS MUST ALWAYS BE NUMBERED AS SHOWN.

CD0005

REV. DESC: REVISE TO SHOW OPTIONAL COLORS			
REV. LTR: E	BY: JLP	REVISED: 01/19/99 10:15	TDR: 0171435
S00000		FILE: AAA00005140	MDL: -
		MTL: -	

BALDOR ELECTRIC Co.

3PH, DV, 9 LEADS