

**BALDOR® • RELIANCE™**

---

# Customer information packet

## JSL725A

2HP, 3450RPM, 1PH, 60HZ, 3528L, N

Class - None

Division - Not Applicable

Copyright © All product information within this document is subject to ABB Motors and Mechanical Inc. copyright © protection, unless otherwise noted.

10/5/2024 2:31:37 AM

## Specifications

Enclosure	OPSB
Frame	56YZ
Frame Material	Steel
Frequency	60.00 Hz
Haz Area Class and Group	None
Haz Area Division	Not Applicable
Motor Letter Type	Cap Start, Induction Run
Output @ Frequency	2.000 HP @ 60 HZ
Phase	1
Synchronous Speed @ Frequency	3600 RPM @ 60 HZ
Voltage @ Frequency	115.0 V @ 60 HZ 230.0 V @ 60 HZ
Agency Approvals	UR CSA
Ambient Temperature	40 °C
Auxillary Box	No Auxillary Box
Auxillary Box Lead Termination	None
Base Indicator	No Mounting
Bearing Grease Type	Polyrex EM (-20F +300F)
Blower	None
Current @ Voltage	11.000 A @ 230.0 V 13.300 A @ 208.0 V 22.000 A @ 115.0 V
Design Code	L
Drip Cover	No Drip Cover
Duty Rating	CONT
Efficiency @ 100% Load	74.0 %
Electrically Isolated Bearing	Not Electrically Isolated
Feedback Device	NO FEEDBACK
Front Face Code	Terminal Panel
Front Shaft Indicator	None
Heater Indicator	No Heater

## Part detail

Revision	S
Type	AC
Mech. spec.	35E2011
Base	
Status	PRD/A
Elec. spec.	35WGL467
Layout	35LYE2011
Eff. date	05-07-2024
CD Diagram	CD0203
Poles	02
Leads	4#14 A&J,1#18 B PH,1#12 #1TH
Proprietary	False
Created date	01-26-2016

High Voltage Full Load Amps	11.0 a
Insulation Class	B
Inverter Code	Not Inverter
KVA Code	J
Lifting Lugs	No Lifting Lugs
Locked Bearing Indicator	Locked Bearing
Motor Lead Exit	Terminal Panel
Motor Lead Quantity/Wire Size	4 @ 14 AWG, A&J
Motor Lead Termination	None
Motor Standards	NEMA
Motor Type	3528L
Mounting Arrangement	F1
Number of Poles	2
Overall Length	14.81 IN
Power Factor	81
Product Family	General Purpose
Pulley End Bearing Type	Ball
Pulley Face Code	Pool Pump
Pulley Shaft Indicator	Ext Thread & Tapped Hole
Rodent Screen	None
RoHS Status	ROHS COMPLIANT
Service Factor	1.20
Shaft Diameter	0.625 IN
Shaft Extension Location	Pulley End
Shaft Ground Indicator	No Shaft Grounding
Shaft Rotation	Fixed Opposite Standard
Shaft Slinger Indicator	Shaft Slinger
Speed	3450 rpm
Speed Code	Single Speed
Starting Method	Direct on line
Thermal Device - Bearing	None
Thermal Device - Winding	None
Vibration Sensor Indicator	No Vibration Sensor
Winding Thermal 1	None

**Winding Thermal 1 Location**

EP

**Winding Thermal 2**

None

---

**Nameplate**

<b>NP1257L</b>									
<b>CAT.NO.</b>	JSL725A								
<b>SPEC.</b>	35E2011L467G1								
<b>HP</b>	2								
<b>VOLTS</b>	115/230								
<b>AMP</b>	22/11								
<b>RPM</b>	3450								
<b>FRAME</b>	56YZ			<b>HZ</b>	60		<b>PH</b>	1	
<b>SER.F.</b>	1.20	<b>CODE</b>	J	<b>DES</b>	L	<b>CL</b>	B		
<b>NEMA-NOM-EFF</b>	74	<b>PF</b>	81						
<b>RATING</b>	40C AMB-CONT								
<b>CC</b>									
<b>DE</b>	6203	<b>ODE</b>	6203						
<b>ENCL</b>	OPSB	<b>SN</b>							
	SFA 25.2/12.6								

**AC Induction Motor Performance Data**

Record # 54667

Typical performance - not guaranteed values

Winding: 35WGL467-R001		Type: 3528L	Enclosure: OPEN		
<b>Nameplate Data</b>			<b>115 V, 60 Hz: Low Voltage Connection</b>		
Rated Output (HP)	2	Full Load Torque	3.05 LB-FT		
Volts	115/230	Start Configuration	direct on line		
Full Load Amps	22/11	Breakdown Torque	8.39 LB-FT		
R.P.M.	3450	Pull-up Torque	4.22 LB-FT		
Hz	60 Phase	1	Locked-rotor Torque	6.51 LB-FT	
NEMA Design Code	L	KVA Code	J	Starting Current	130 A
Service Factor (S.F.)	1.2	No-load Current	11.8 A		
NEMA Nom. Eff.	74	Power Factor	81	Line-line Res. @ 25°C	0.233 Ω A Ph 0.862 Ω B Ph
Rating - Duty	40C	AMB-CONT	Temp. Rise @ Rated Load	47°C	
S.F. Amps	25.2/12.6	Temp. Rise @ S.F. Load	56°C		
		Locked-rotor Power Factor	76.7		
		Rotor inertia	0.0774 LB-FT <sup>2</sup>		

**Load Characteristics 115 V, 60 Hz, 2 HP**

% of Rated Load	25	50	75	100	125	150	S.F.
Power Factor	49	65	76	81	85	86	84
Efficiency	50.8	67.3	71	74.8	73.8	71.5	74
Speed	3571	3551	3525	3501	3472	3434	3478
Line amperes	13	15.1	18.6	21.8	26	31.2	25.2

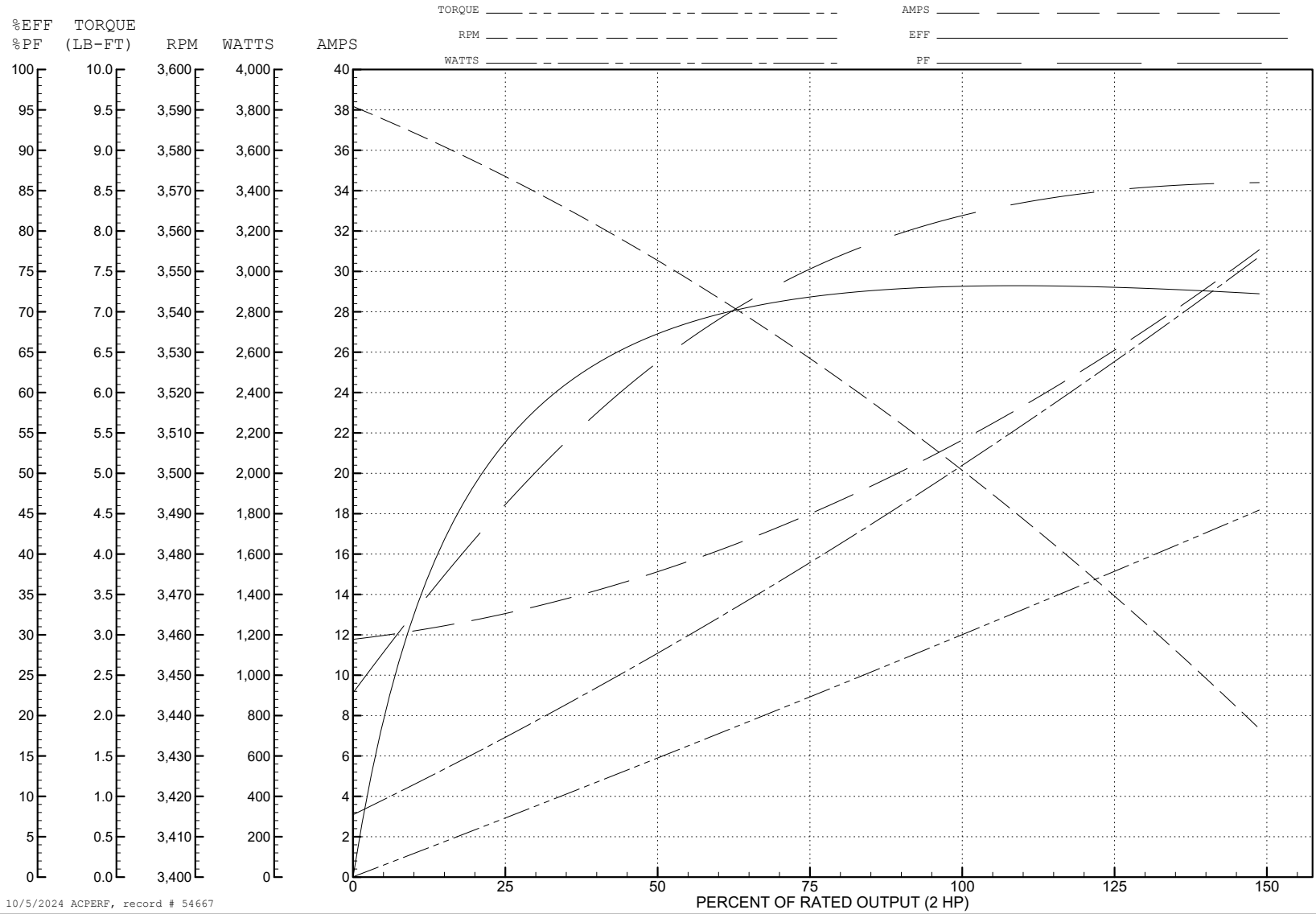
ABB Motors and Mechanical Inc.

WINDING # 35WGL467

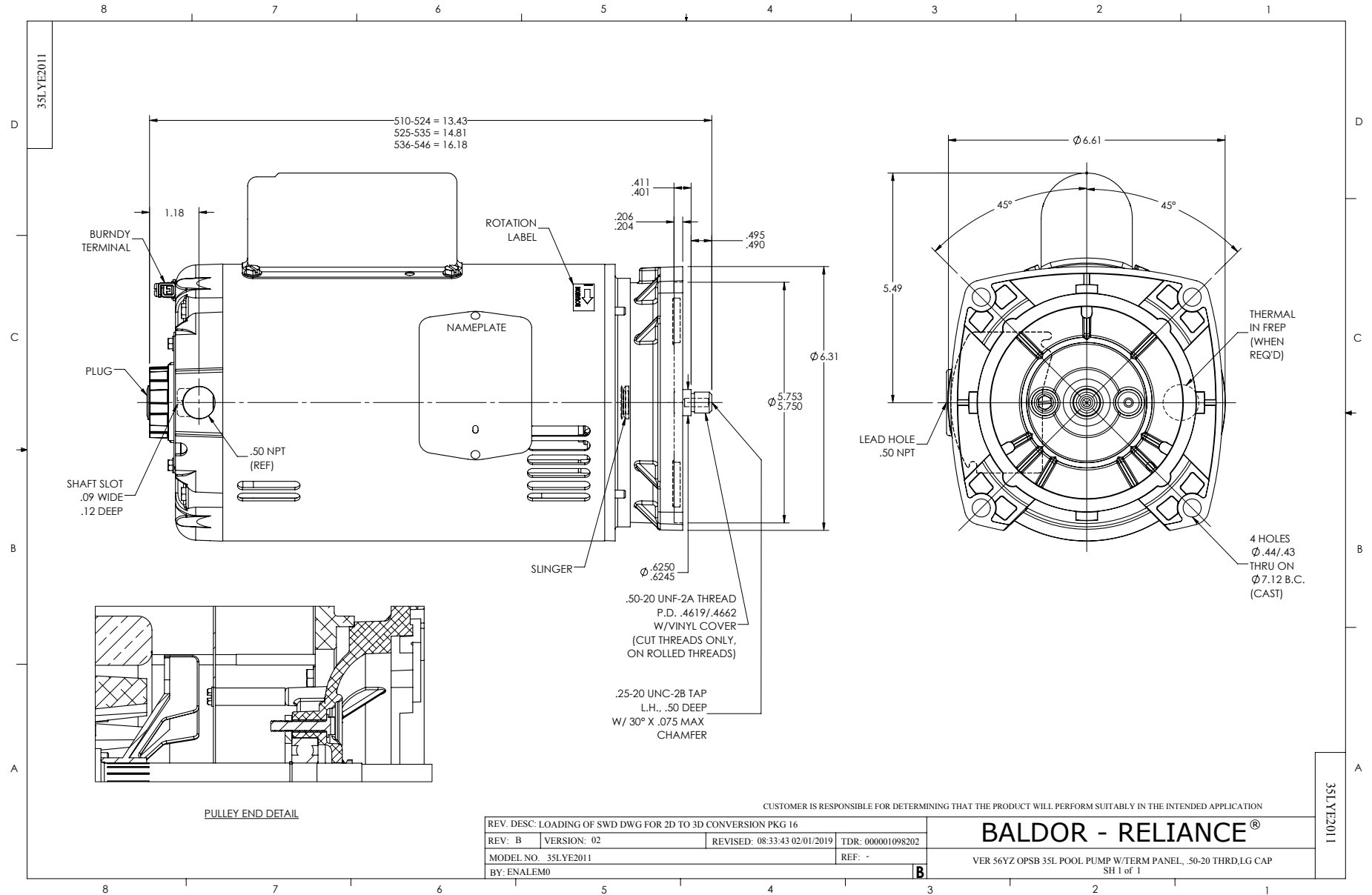
Typical performance - not guaranteed values.

2 HP 1 PH 60 HZ 3450 RPM 115 V 3528L

TORQUES (LB-FT): PO=8.39 PU=4.22 LR=6.51 LRA=130

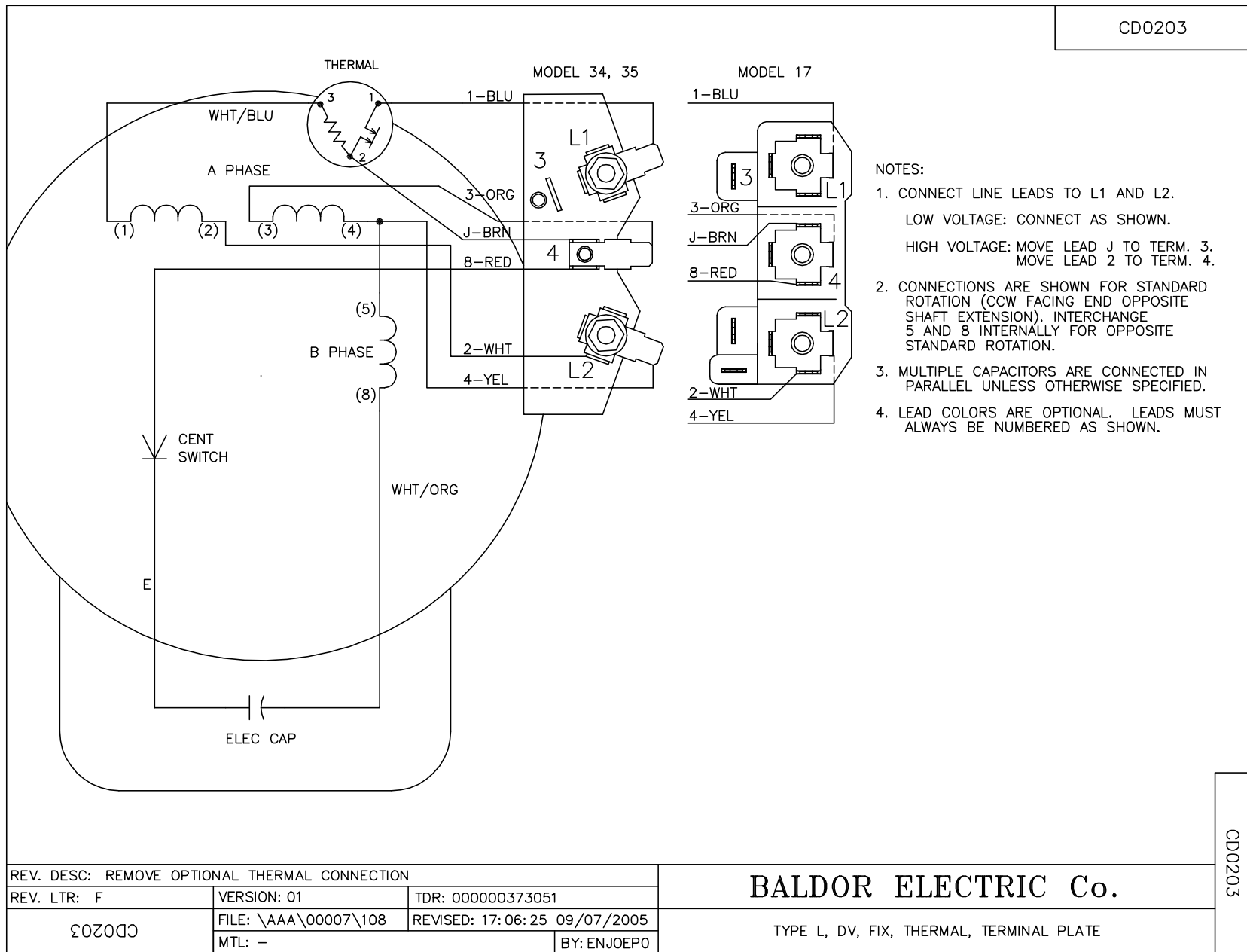


10/5/2024 ACPERF, record # 54667





CD0203



REV. DESC: REMOVE OPTIONAL THERMAL CONNECTION		
REV. LTR: F	VERSION: 01	TDR: 000000373051
Ω0203	FILE: \AAA\00007\108	REVISED: 17:06:25 09/07/2005
	MTL: -	BY: ENJOEPO

**BALDOR ELECTRIC Co.**

TYPE L, DV, FIX, THERMAL, TERMINAL PLATE

CD0203