

BALDOR® • RELIANCE™

Customer information packet

JSL625A

1.5HP, 3450RPM, 1PH, 60HZ, 3524L, N

Class - None

Division - Not Applicable

Copyright © All product information within this document is subject to ABB Motors and Mechanical Inc. copyright © protection, unless otherwise noted.

12/2/2024 8:45:58 PM

Specifications

Enclosure	OPSB
Frame	56YZ
Frame Material	Steel
Frequency	60.00 Hz
Haz Area Class and Group	None
Haz Area Division	Not Applicable
Motor Letter Type	Cap Start, Induction Run
Output @ Frequency	1.500 HP @ 60 HZ
Phase	1
Synchronous Speed @ Frequency	3600 RPM @ 60 HZ
Voltage @ Frequency	115.0 V @ 60 HZ 230.0 V @ 60 HZ
Agency Approvals	UR CSA
Ambient Temperature	40 °C
Auxillary Box	No Auxillary Box
Auxillary Box Lead Termination	None
Base Indicator	No Mounting
Bearing Grease Type	Polyrex EM (-20F +300F)
Blower	None
Current @ Voltage	11.000 A @ 208.0 V 18.000 A @ 115.0 V 9.000 A @ 230.0 V
Design Code	L
Drip Cover	No Drip Cover
Duty Rating	CONT
Efficiency @ 100% Load	72.0 %
Electrically Isolated Bearing	Not Electrically Isolated
Feedback Device	NO FEEDBACK
Front Face Code	Terminal Panel
Front Shaft Indicator	None
Heater Indicator	No Heater

Part detail

Revision	R
Type	AC
Mech. spec.	35E2011
Base	
Status	PRD/A
Elec. spec.	35WGL466
Layout	35LYE2011
Eff. date	05-07-2024
CD Diagram	CD0203
Poles	02
Leads	4#14 A&J,1#18 B PH,1#12 #1TH
Proprietary	False
Created date	01-21-2016

High Voltage Full Load Amps	9.0 a
Insulation Class	B
Inverter Code	Not Inverter
KVA Code	H
Lifting Lugs	No Lifting Lugs
Locked Bearing Indicator	Locked Bearing
Motor Lead Exit	Terminal Panel
Motor Lead Quantity/Wire Size	4 @ 14 AWG, A&J
Motor Lead Termination	None
Motor Standards	NEMA
Motor Type	3524L
Mounting Arrangement	F1
Number of Poles	2
Overall Length	13.43 IN
Power Factor	75
Product Family	General Purpose
Pulley End Bearing Type	Ball
Pulley Face Code	Pool Pump
Pulley Shaft Indicator	Ext Thread & Tapped Hole
Rodent Screen	None
RoHS Status	ROHS COMPLIANT
Service Factor	1.30
Shaft Diameter	0.625 IN
Shaft Extension Location	Pulley End
Shaft Ground Indicator	No Shaft Grounding
Shaft Rotation	Fixed Opposite Standard
Shaft Slinger Indicator	Shaft Slinger
Speed	3450 rpm
Speed Code	Single Speed
Starting Method	Direct on line
Thermal Device - Bearing	None
Thermal Device - Winding	None
Vibration Sensor Indicator	No Vibration Sensor
Winding Thermal 1	None

Winding Thermal 1 Location

SB

Winding Thermal 2

None

Nameplate

NP1257L									
CAT.NO.	JSL625A								
SPEC.	35E2011L466G1								
HP	1.5								
VOLTS	115/230								
AMP	18/9								
RPM	3450								
FRAME	56YZ			HZ	60		PH	1	
SER.F.	1.30	CODE	H	DES	L	CL	B		
NEMA-NOM-EFF	72	PF	75						
RATING	40C AMB-CONT								
CC									
DE	6203	ODE	6203						
ENCL	OPSB	SN							
	SFA 21/10.5								

AC Induction Motor Performance Data

Record # 54666

Typical performance - not guaranteed values

Winding: 35WGL466-R001		Type: 3524L	Enclosure: OPEN		
Nameplate Data			115 V, 60 Hz: Low Voltage Connection		
Rated Output (HP)	1.5	Full Load Torque	2.27 LB-FT		
Volts	115/230	Start Configuration	direct on line		
Full Load Amps	18/9	Breakdown Torque	7.57 LB-FT		
R.P.M.	3450	Pull-up Torque	6.05 LB-FT		
Hz	60 Phase	1	Locked-rotor Torque	7.32 LB-FT	
NEMA Design Code	L	KVA Code	H	Starting Current	108 A
Service Factor (S.F.)	1.3	No-load Current	10.8 A		
NEMA Nom. Eff.	72	Power Factor	75	Line-line Res. @ 25°C	0.313 Ω A Ph 0.963 Ω B Ph
Rating - Duty	40C	AMB-CONT	Temp. Rise @ Rated Load	78°C	
S.F. Amps	21/10.5	Temp. Rise @ S.F. Load	97°C		
		Locked-rotor Power Factor	84.9		
		Rotor inertia	0.0664 LB-FT ²		

Load Characteristics 115 V, 60 Hz, 1.5 HP

% of Rated Load	25	50	75	100	125	150	S.F.
Power Factor	41	57	67	75	80	83	81
Efficiency	49	64	70.8	74.1	74.4	74.6	74.4
Speed	3574	3554	3534	3513	3488	3460	3482
Line amperes	11.8	13.3	15.3	17.7	20.6	23.7	21.2

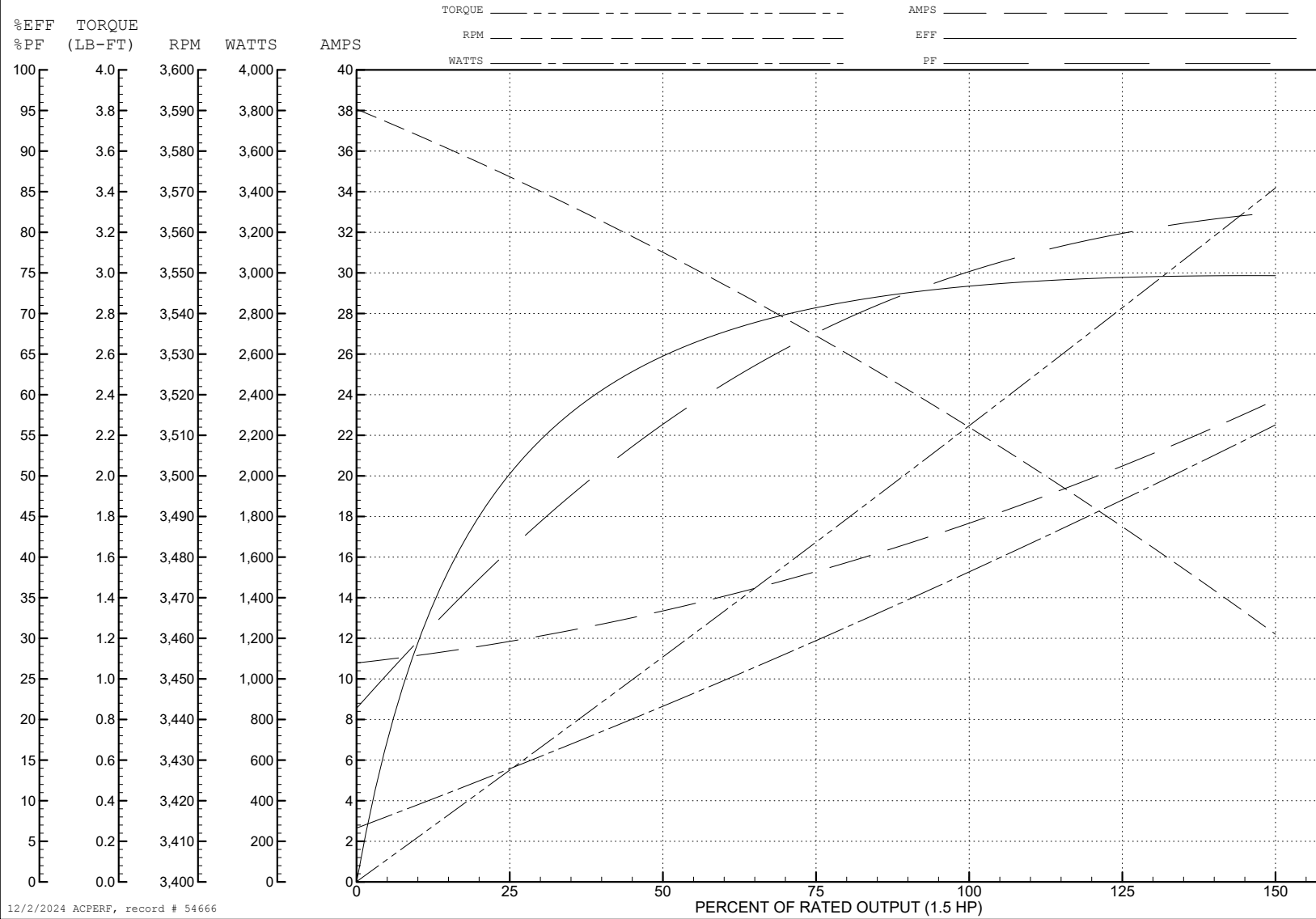
ABB Motors and Mechanical Inc.

WINDING # 35WGL466

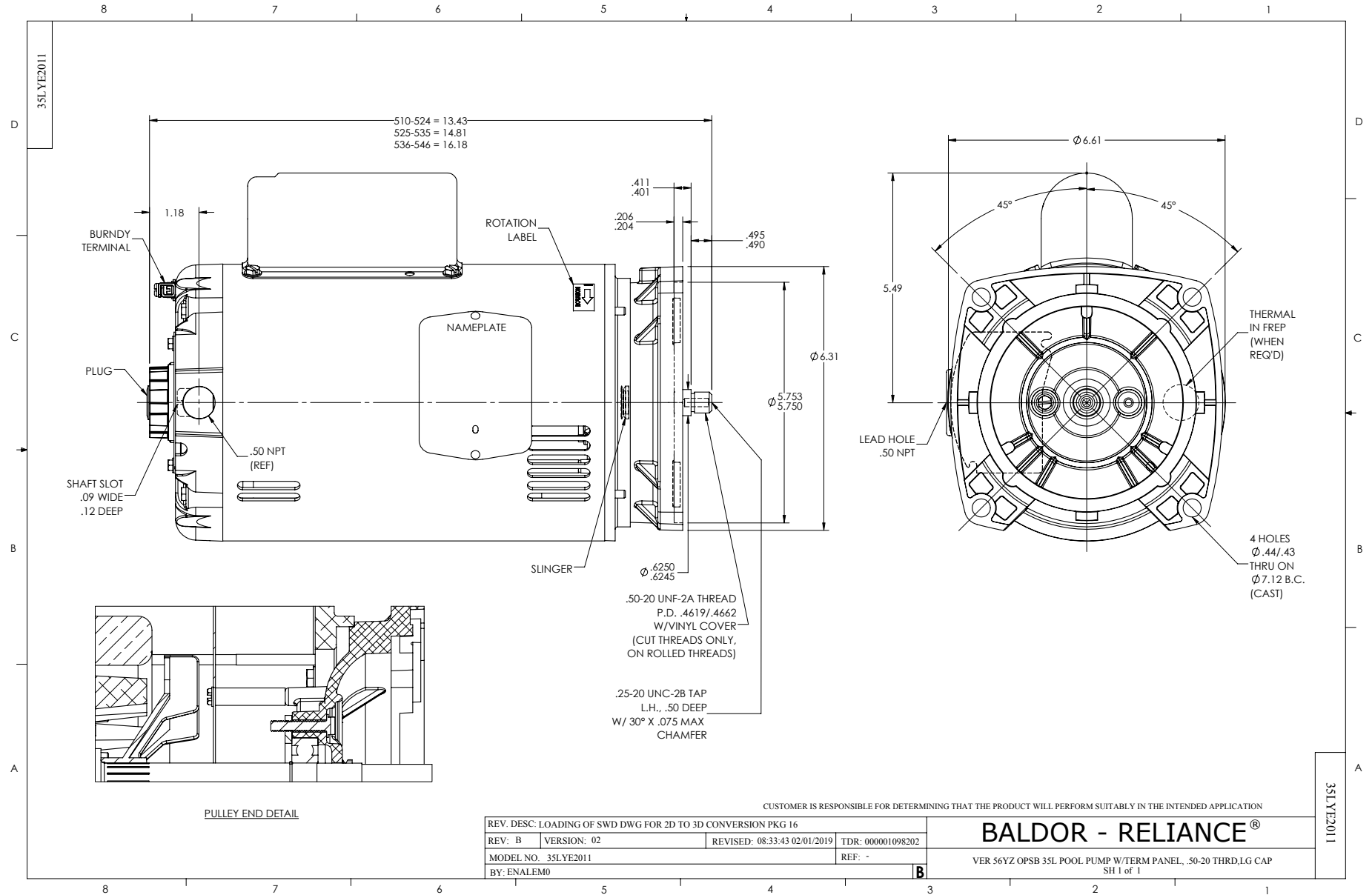
Typical performance - not guaranteed values.

1.5 HP 1 PH 60 HZ 3450 RPM 115 V 3524L

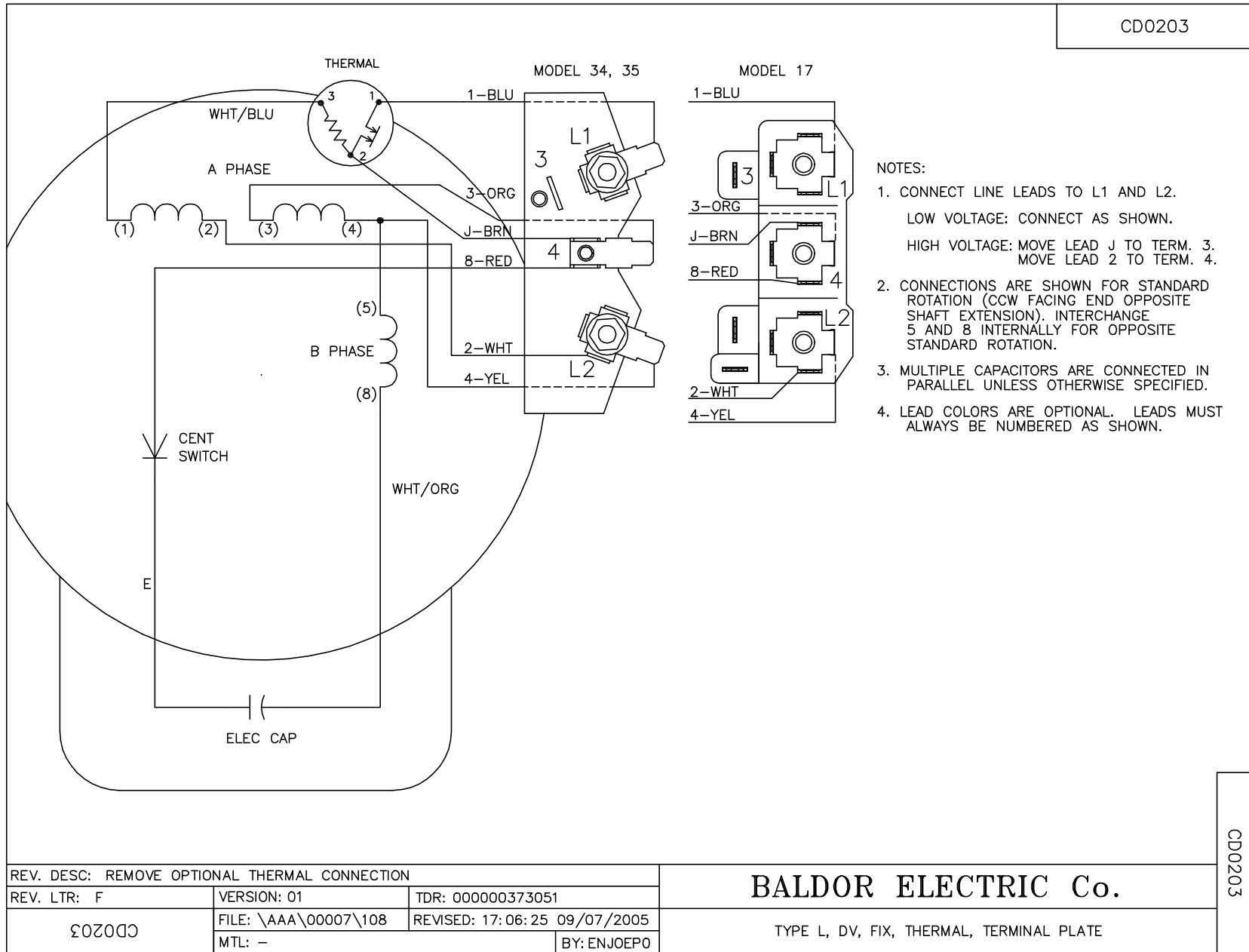
TORQUES (LB-FT): PO=7.57 PU=6.05 LR=7.32 LRA=108



12/2/2024 ACPERF, record # 54666



CD0203



REV. DESC: REMOVE OPTIONAL THERMAL CONNECTION		
REV. LTR: F	VERSION: 01	TDR: 000000373051
Ω0203	FILE: \AAA\00007\108	REVISED: 17:06:25 09/07/2005
	MTL: -	BY: ENJOEPO

BALDOR ELECTRIC Co.

TYPE L, DV, FIX, THERMAL, TERMINAL PLATE

CD0203