

ABB BALDOR RELIANCE III

Customer information packet

JPL1510T

7.5HP, 1750RPM, 1PH, 60HZ, 3740LC, N

Class - None

Division - Not Applicable

Specifications

Enclosure	OPEN
Frame	213JP
Frame Material	Steel
Frequency	60.00 Hz
Haz Area Class and Group	None
Haz Area Division	Not Applicable
Motor Letter Type	Cap Start, Cap Run
Output @ Frequency	7.500 HP @ 60 HZ
Phase	1
Synchronous Speed @ Frequency	1800 RPM @ 60 HZ
Voltage @ Frequency	230.0 V @ 60 HZ
Agency Approvals	CSA UR
Ambient Temperature	40 °C
Auxiliary Box	NO AUXILLARY BOX
Auxiliary Box Lead Termination	None
Base Indicator	Rigid
Bearing Grease Type	Polyrex EM (-20F +300F)
Blower	None
Current @ Voltage	33.000 A @ 230.0 V 35.500 A @ 208.0 V
Design Code	L
Drip Cover	No Drip Cover
Duty Rating	CONT
Efficiency @ 100% Load	85.5 %
Electrically Isolated Bearing	Not Electrically Isolated
Feedback Device	NO FEEDBACK
Front Shaft Indicator	None
Heater Indicator	No Heater
High Voltage Full Load Amps	33.0 a
Insulation Class	F
Inverter Code	Not Inverter

Part Detail

Revision	G
Type	AC
Mech. spec.	37M341
Base	
Status	PRD/A
Elec. spec.	37WGW003
Layout	37LYM341
Eff. date	05-13-2024
CD Diagram	CD0017A02
Poles	04
Leads	2#10 A PH,2#14 B PH
Proprietary	False
Created date	11-20-2020

KVA Code	E
Lifting Lugs	Standard Lifting Lugs
Locked Bearing Indicator	Locked Bearing
Motor Lead Quantity/Wire Size	2 @ 10 AWG, A PH
Motor Lead Termination	Flying Leads
Motor Standards	NEMA
Motor Type	3740LC
Mounting Arrangement	F1
Number of Poles	4
Overall Length	23.19 IN
Power Factor	87
Product Family	General Purpose
Pulley End Bearing Type	Ball
Pulley Face Code	C-Face
Pulley Shaft Indicator	Tapped & Key
Rodent Screen	Included
Service Factor	1.15
Shaft Diameter	1.250 IN
Shaft Ground Indicator	No Shaft Grounding
Shaft Rotation	Reversible
Shaft Slinger Indicator	Shaft Slinger
Speed	1750 rpm
Speed Code	Single Speed
Starting Method	Direct on line
Thermal Device - Bearing	None
Thermal Device - Winding	None
Vibration Sensor Indicator	No Vibration Sensor
Winding Thermal 1	None
Winding Thermal 2	None

Nameplate

NP1256L										
CAT.NO.	JPL1510T									
SPEC.	37M341W003G1									
HP	7.5									
VOLTS	230									
AMP	33									
RPM	1750									
FRAME	215JP		HZ	60			PH	1		
SER.F.	1.15	CODE	E	DES	L	CLASS	F			
NEMA-NOM-EFF	85.5	PF	87							
RATING	40C AMB-CONT									
CC										
DE	6309		ODE	6206						
ENCL	OPEN	SN								

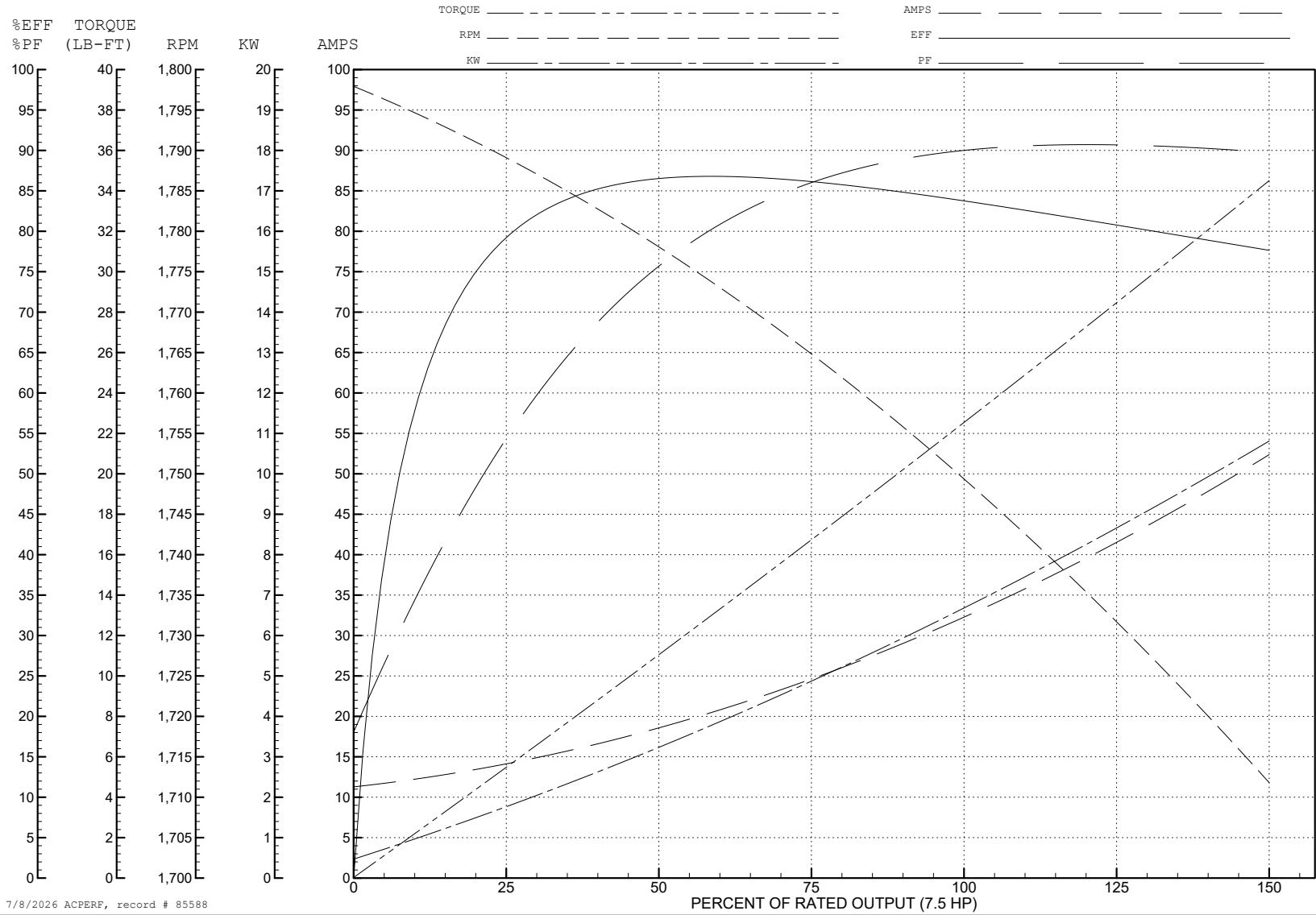
ABB Motors and Mechanical Inc.

WINDING # 37WGW003

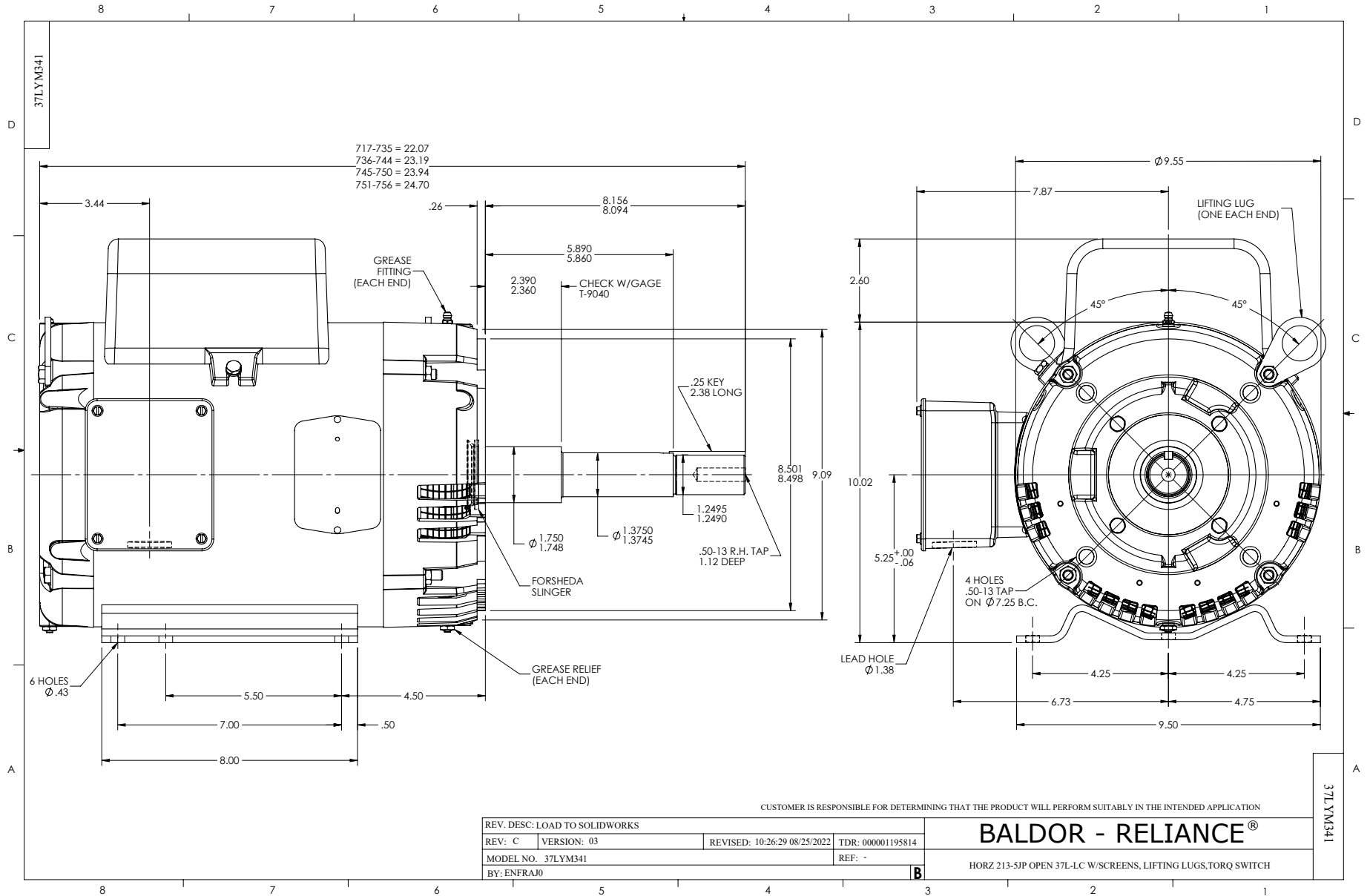
Typical performance - not guaranteed values.

7.5 HP 1 PH 60 HZ 1750 RPM 230 V 3740LC

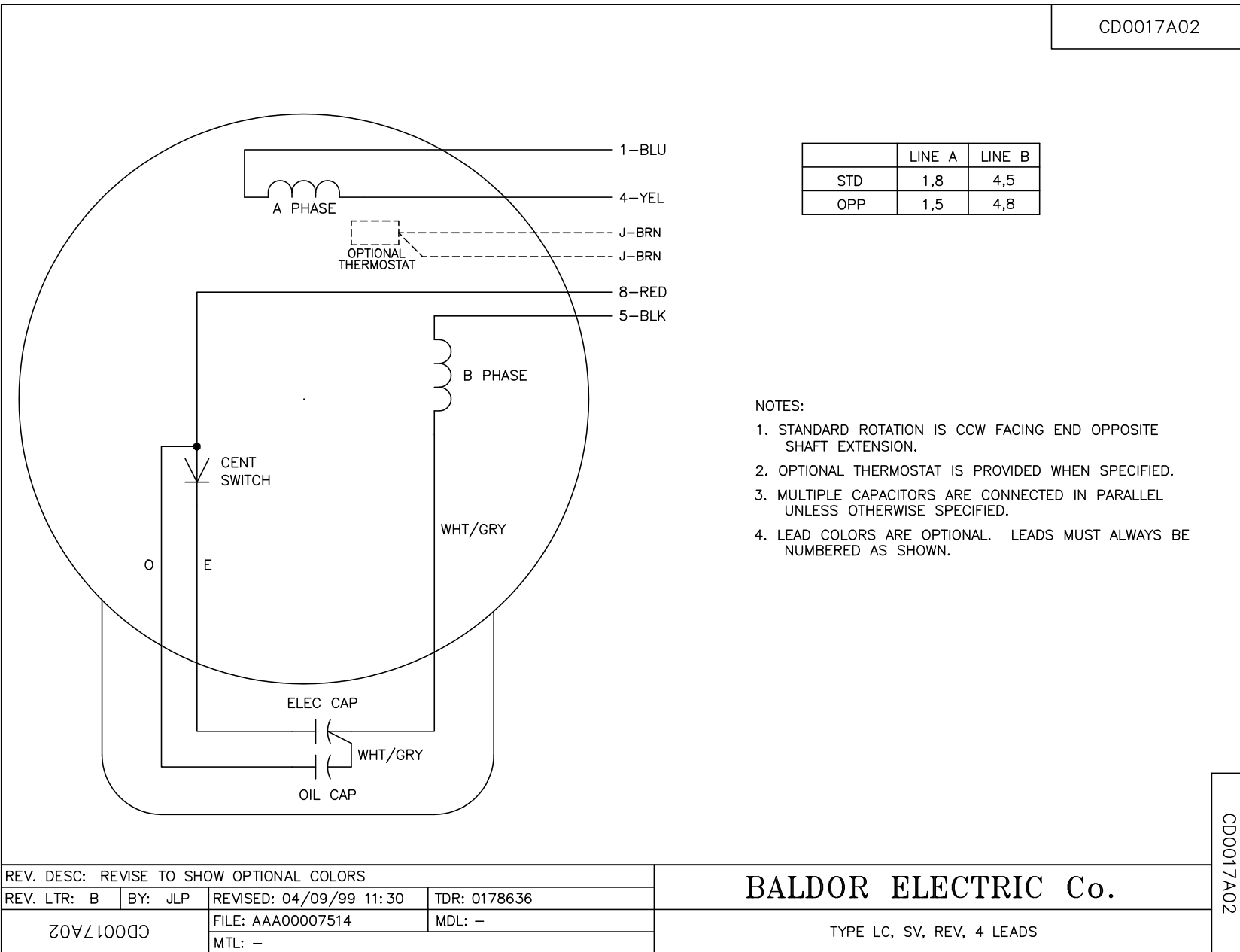
TORQUES (LB-FT): PO=49.18 PU=39.04 LR=49.82 LRA=181



7/8/2026 ACPERF, record # 85588



CD0017A02



CD0017A02

REV. DESC: REVISE TO SHOW OPTIONAL COLORS			
REV. LTR: B	BY: JLP	REVISED: 04/09/99 11:30	TDR: 0178636
CD0017A02		FILE: AAA00007514	MDL: -
		MTL: -	

BALDOR ELECTRIC Co.

TYPE LC, SV, REV, 4 LEADS