

BALDOR • RELIANCE

Customer information packet

JPL1509T

7.5HP, 3450RPM, 1PH, 60HZ, 213JP, 3729L, OPEN

Class - None

Division - Not Applicable

Specifications

Enclosure	OPEN
Frame	213JP
Frame Material	Steel
Frequency	60.00 Hz
Motor Letter Type	Cap Start, Induction Run
Output @ Frequency	7.500 HP @ 60 HZ
Phase	1
Synchronous Speed @ Frequency	3600 RPM @ 60 HZ
Voltage @ Frequency	230.0 V @ 60 HZ
XP Class and Group	None
XP Division	Not Applicable
Agency Approvals	UR CSA
Ambient Temperature	40 °C
Auxillary Box	No Auxillary Box
Auxillary Box Lead Termination	None
Base Indicator	Rigid
Bearing Grease Type	Polyrex EM (-20F +300F)
Blower	None
Current @ Voltage	37.000 A @ 230.0 V
Design Code	L
Drip Cover	No Drip Cover
Duty Rating	CONT
Efficiency @ 100% Load	81.0 %
Electrically Isolated Bearing	Not Electrically Isolated
Feedback Device	NO FEEDBACK
Front Face Code	Standard
Front Shaft Indicator	None
Heater Indicator	No Heater
High Voltage Full Load Amps	37.0 a
Insulation Class	F
Inverter Code	Not Inverter

Part detail

Revision	AW
Type	AC
Mech. spec.	37E285
Base	
Status	PRD/A
Elec. spec.	37WGX077
Layout	37LYE285
Eff. date	08-25-2022
CD Diagram	CD0017A01
Poles	02
Leads	2#8 A PH,2#14 B PH
Proprietary	False
Created date	01-01-0001

KVA Code	G
Lifting Lugs	Standard Lifting Lugs
Locked Bearing Indicator	Locked Bearing
Motor Lead Exit	Ko Box
Motor Lead Quantity/Wire Size	2 @ 8 AWG, A PH
Motor Lead Termination	Flying Leads
Motor Standards	NEMA
Motor Type	3729L
Mounting Arrangement	F1
Number of Poles	2
Overall Length	22.07 IN
Power Factor	82
Product Family	General Purpose
Pulley End Bearing Type	Ball
Pulley Face Code	C-Face
Pulley Shaft Indicator	Tapped & Key
Rodent Screen	Included
Service Factor	1.15
Shaft Diameter	1.250 IN
Shaft Extension Location	Pulley End
Shaft Ground Indicator	No Shaft Grounding
Shaft Rotation	Reversible
Shaft Slinger Indicator	Shaft Slinger
Speed	3450 rpm
Speed Code	Single Speed
Starting Method	Direct on line
Thermal Device - Bearing	None
Thermal Device - Winding	None
Vibration Sensor Indicator	No Vibration Sensor
Winding Thermal 1	None
Winding Thermal 2	None

Nameplate

NP1256L									
CAT.NO.	JPL1509T								
SPEC.	37E285X77								
HP	7.5								
VOLTS	230								
AMP	37								
RPM	3450								
FRAME	213JP		HZ	60		PH	1		
SER.F.	1.15	CODE	G	DES	L	CLASS	F		
NEMA-NOM-EFF	81	PF	82						
RATING	40C AMB-CONT								
CC		USABLE AT 208V							
DE	6309	ODE	6206						
ENCL	OPEN	SN							

AC Induction Motor Performance Data

Record # 61303

Typical performance - not guaranteed values

Winding: 37WGX077-R004		Type: 3729L		Enclosure: OPEN	
Nameplate Data			230 V, 60 Hz: Single Voltage Motor		
Rated Output (HP)	7.5	Full Load Torque	11.3 LB-FT		
Volts	230	Start Configuration	direct on line		
Full Load Amps	37	Breakdown Torque	31 LB-FT		
R.P.M.	3450	Pull-up Torque	17 LB-FT		
Hz	60 Phase	1	Locked-rotor Torque	18 LB-FT	
NEMA Design Code	L KVA Code	G	Starting Current	205 A	
Service Factor (S.F.)		1.15	No-load Current	19.5 A	
NEMA Nom. Eff.	81 Power Factor	82	Line-line Res. @ 25°C	0.23 Ω A Ph 0.799 Ω B Ph	
Rating - Duty		40C AMB-CONT	Temp. Rise @ Rated Load	58°C	
S.F. Amps			Temp. Rise @ S.F. Load	73°C	

Load Characteristics 230 V, 60 Hz, 7.5 HP

% of Rated Load	25	50	75	100	125	150	S.F.
Power Factor	46	65	76	82	85	87	84
Efficiency	61.3	73.9	78.2	79.5	79.3	78.1	79.4
Speed	3574	3552	3528	3502	3472	3438	3484
Line amperes	21.6	25.5	30.1	37.4	45	53.7	42

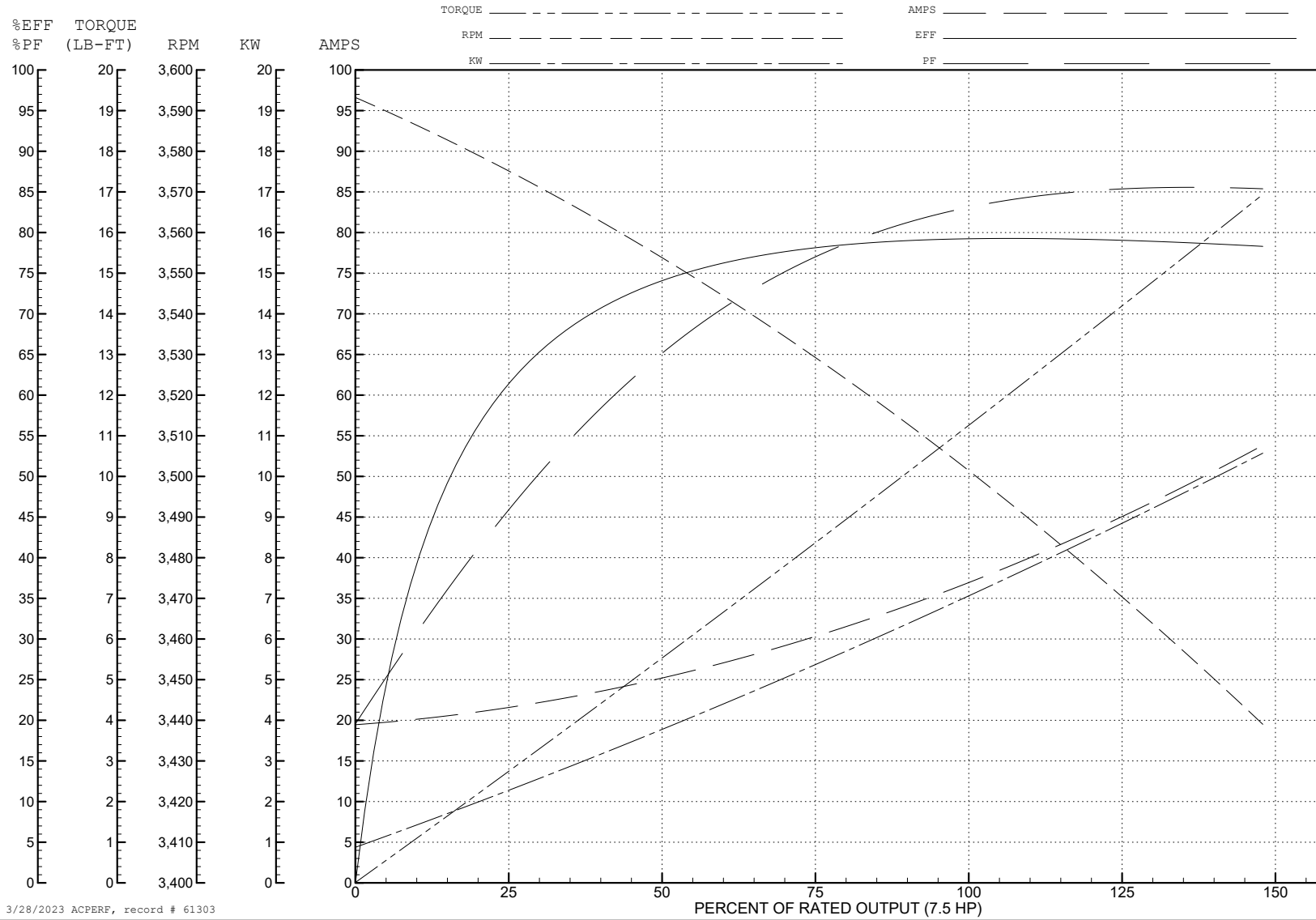
ABB Motors and Mechanical Inc.

WINDING # 37WGX077

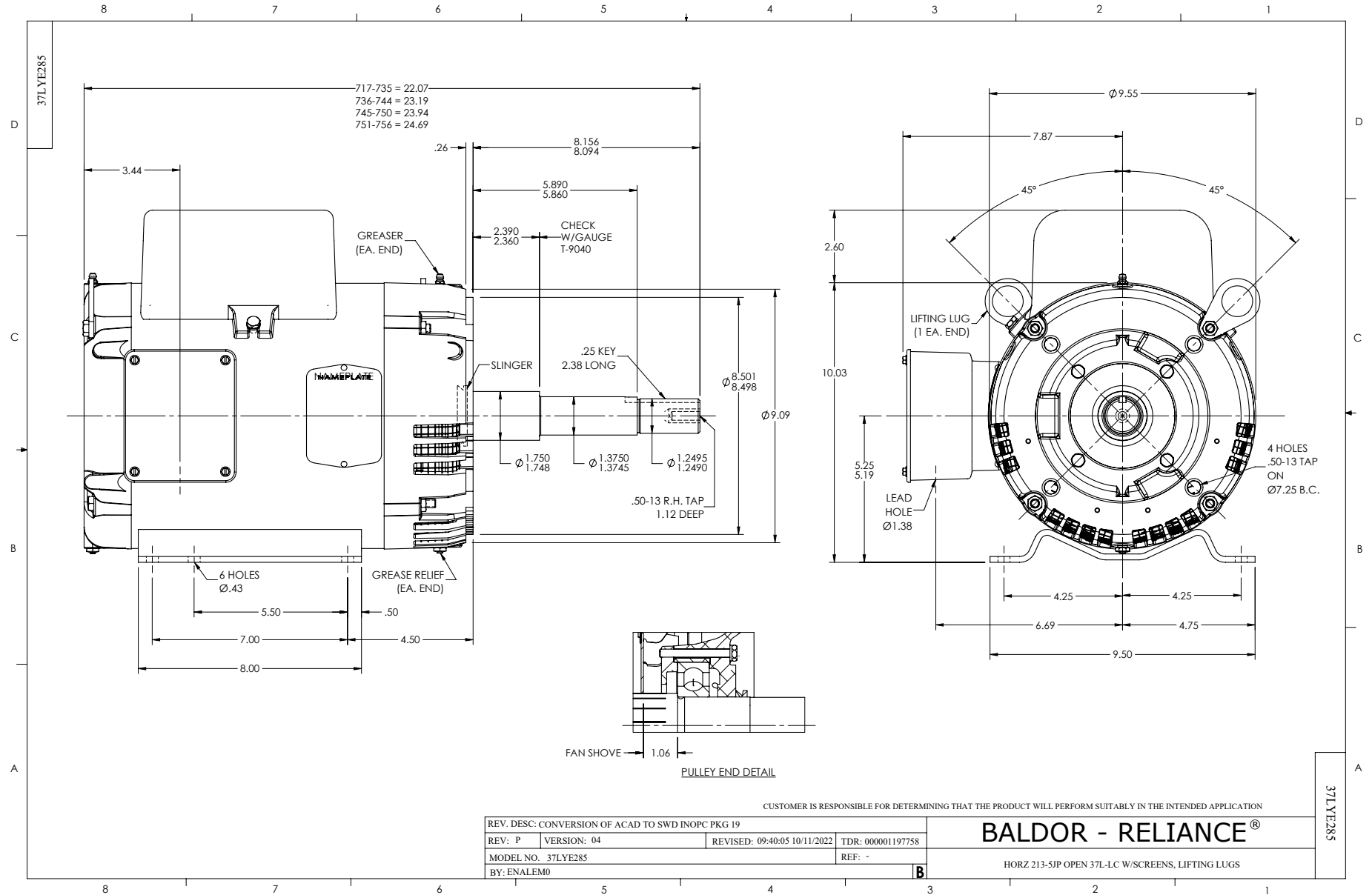
Typical performance - not guaranteed values.

7.5 HP 1 PH 60 HZ 3450 RPM 230 V 3729L

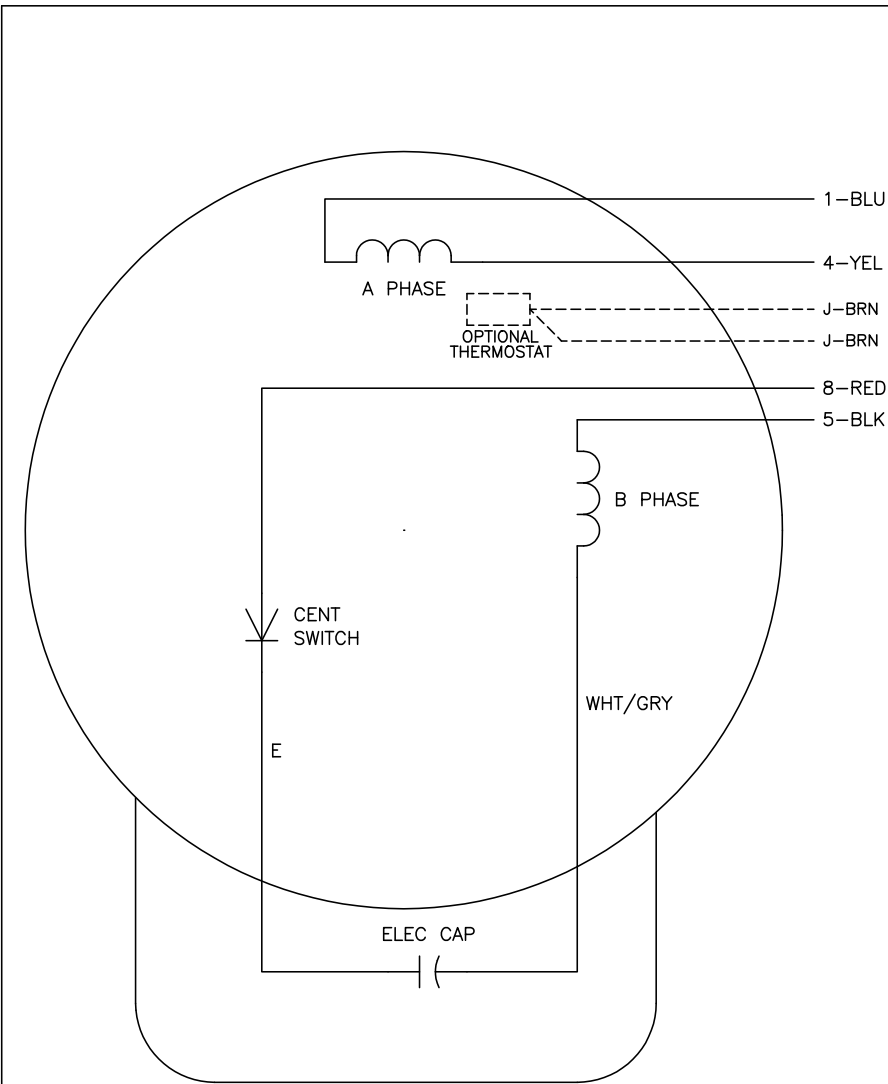
TORQUES (LB-FT): PO=31 PU=17 LR=18 LRA=205



3/28/2023 ACPERF, record # 61303



CD0017A01



	LINE A	LINE B
STD	1,8	4,5
OPP	1,5	4,8

NOTES:

1. STANDARD ROTATION IS CCW FACING END OPPOSITE SHAFT EXTENSION.
2. OPTIONAL THERMOSTAT IS PROVIDED WHEN SPECIFIED.
3. MULTIPLE CAPACITORS ARE CONNECTED IN PARALLEL UNLESS OTHERWISE SPECIFIED.
4. LEAD COLORS ARE OPTIONAL. LEADS MUST ALWAYS BE NUMBERED AS SHOWN.

REV. DESC: REVISE TO SHOW OPTIONAL COLORS			
REV. LTR: B	BY: JLP	REVISED: 04/08/99 1:18	TDR: 0178636
10VZ1000		FILE: AAA00007513	MDL: -
		MTL: -	

BALDOR ELECTRIC Co.

TYPE L, SV, REV, 4 LEADS

CD0017A01