

BALDOR • RELIANCE

Customer information packet

JMXM18522T

5//3HP, 3470//2870RPM, 3PH, 60//50HZ, 184JM

Class - CLI GP D; CLII GP F,G

Division - Division I

Specifications

Enclosure	XPFC
Frame	184JM
Frame Material	Steel
Frequency	50.00 Hz 60.00 Hz
Haz Area Class and Group	CLI GP D; CLII GP F,G
Haz Area Division	Division I
Motor Letter Type	Three Phase
Output @ Frequency	5.000 HP @ 60 HZ 3.000 HP @ 50 HZ
Phase	3
Synchronous Speed @ Frequency	3600 RPM @ 60 HZ
Voltage @ Frequency	460.0 V @ 60 HZ 190.0 V @ 50 HZ 230.0 V @ 60 HZ 380.0 V @ 50 HZ
Agency Approvals	UL CSA EEV
Ambient Temperature	40 °C
Auxillary Box	No Auxillary Box
Auxillary Box Lead Termination	None
Base Indicator	Rigid
Bearing Grease Type	Polyrex EM (-20F +300F)
Blower	None
Constant Torque Speed Range	6
Current @ Voltage	11.200 A @ 230.0 V 4.200 A @ 380.0 V 5.600 A @ 460.0 V 8.400 A @ 190.0 V
Design Code	A
Drip Cover	No Drip Cover
Duty Rating	CONT

Part detail

Revision	-
Type	AC
Mech. spec.	
Base	
Status	PRD/A
Elec. spec.	36WGT860
Layout	36LYE309
Eff. date	04-08-2021
CD Diagram	CD0005
Poles	02
Leads	9#16
Proprietary	False
Created date	03-24-2021

Efficiency @ 100% Load	89.5 %
Electrically Isolated Bearing	Not Electrically Isolated
Feedback Device	NO FEEDBACK
Haz Area Temp Code	T3C
Heater Indicator	No Heater
High Voltage Full Load Amps	4.2 a
Insulation Class	F
Inverter Code	Inverter Duty
IP Rating	NONE
KVA Code	L
Lifting Lugs	No Lifting Lugs
Locked Bearing Indicator	Locked Bearing
Max Speed	5400 rpm
Motor Lead Termination	Flying Leads
Motor Standards	NEMA
Motor Type	3634M
Mounting Arrangement	F1
Number of Poles	2
Overall Length	20.36 IN
Power Factor	94
Product Family	General Purpose
Pulley Face Code	C-Face
Rodent Screen	None
Service Factor	1.00
Shaft Diameter	0.875 IN
Shaft Ground Indicator	No Shaft Grounding
Shaft Rotation	Reversible
Speed	3470 rpm
Speed Code	Single Speed
Starting Method	Direct on line
Thermal Device - Bearing	None
Thermal Device - Winding	Normally Closed Thermostat
Vibration Sensor Indicator	No Vibration Sensor
Winding Thermal 1	None

Winding Thermal 2

None

Nameplate

NP0887XPSLEV

NO.		CC	010A		
S/N		TEMP CODE	T3C		
SPEC.	36-0000-0493	INV.TYPE	PWM		
CAT.NO.	JMXXM18522T	C HP FR	60	C HP TO	90
HP	5//3	CT HZ FROM	6	CT HZ TO	60
VOLTS	230/460//190/380	VT HZ FROM	6	VT HZ TO	60
AMPS	11.2/5.6//8.4/4.2	MAG CUR	3.2/1.6		
RPM	3470//2870	MX RPM	5400		
HZ	60//50	PH	3	CL	F
		NOM.EFF.	89.5		
SER.F.	1.00	DES	A	SL HZ	2.2
				WK2	0.15
FRAME	184JM	RATING	40C AMB-CONT		
	NEMA MG-1 PART 5, IP54				
	1.15 SF ON SINE WAVE				

AC Induction Motor Performance Data

Record # 73675

Typical performance - not guaranteed values

Winding: 36WGT860-R067		Type: 3634M	Enclosure: XPFC	
Nameplate Data			460 V, 60 Hz: High Voltage Connection	
Rated Output (HP)	5//3	Full Load Torque	7.66 LB-FT	
Volts	230/460//190/380	Start Configuration	direct on line	
Full Load Amps	11.2/5.6//8.4/4.2	Breakdown Torque	41.6 LB-FT	
R.P.M.	3470//2870	Pull-up Torque	26.2 LB-FT	
Hz	60//50 Phase	Locked-rotor Torque	30.5 LB-FT	
NEMA Design Code	A KVA Code	Starting Current	59.3 A	
Service Factor (S.F.)	1	No-load Current	1.55 A	
NEMA Nom. Eff.	89.5 Power Factor	Line-line Res. @ 25°C	2.2 Ω	
Rating - Duty	40C AMB-CONT	Temp. Rise @ Rated Load	59°C	
		Locked-rotor Power Factor	42.9	
		Rotor inertia	0.152 LB-FT ²	

Load Characteristics 460 V, 60 Hz, 5 HP

% of Rated Load	25	50	75	100	125	150
Power Factor	65	83	90	94	95	95
Efficiency	87.4	90.6	90.8	90.5	88.9	87.1
Speed	3567	3536	3503	3469	3431	3389
Line amperes	2.1	3.14	4.37	5.56	6.98	8.46

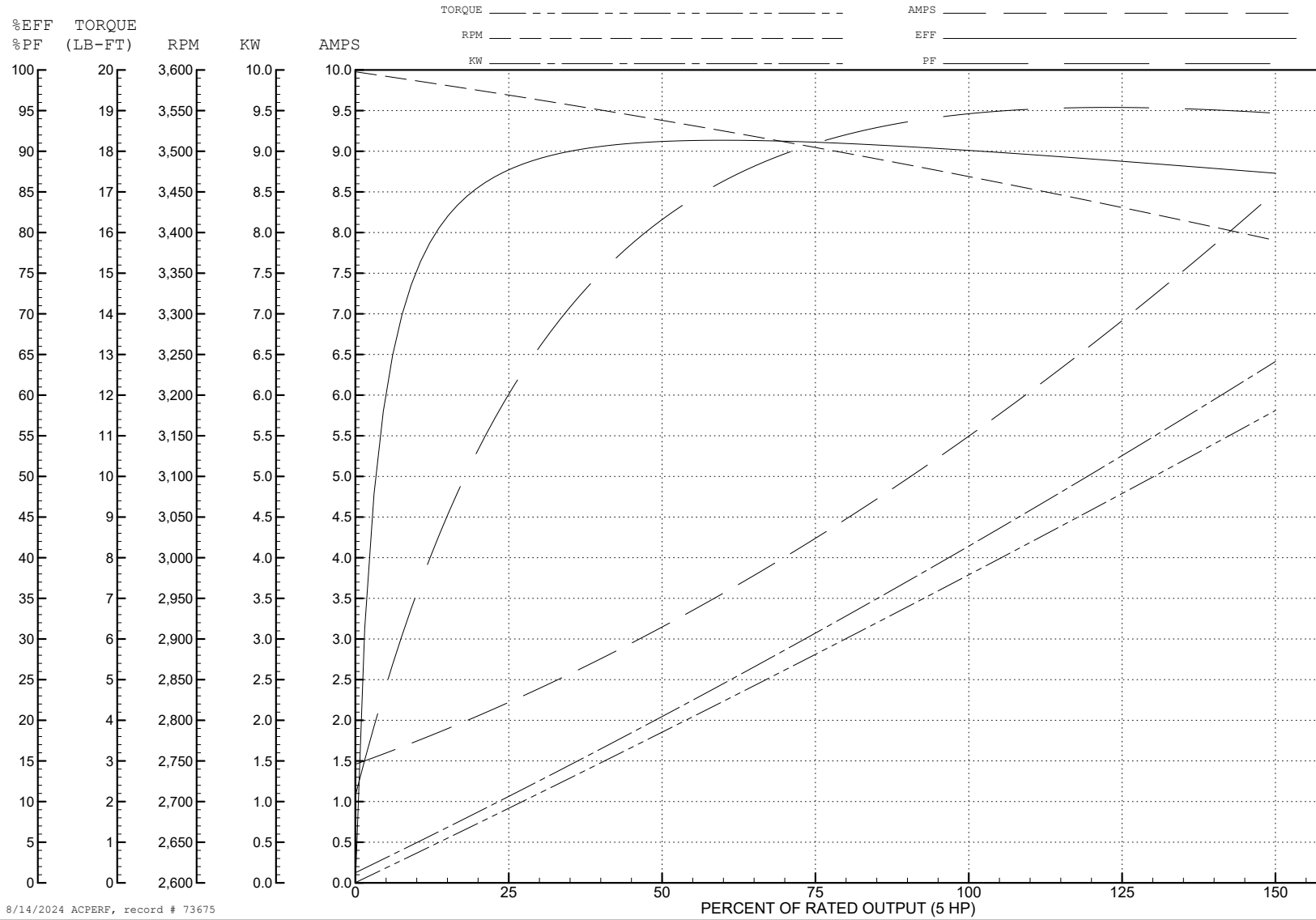
ABB Motors and Mechanical Inc.

WINDING # 36WGT860

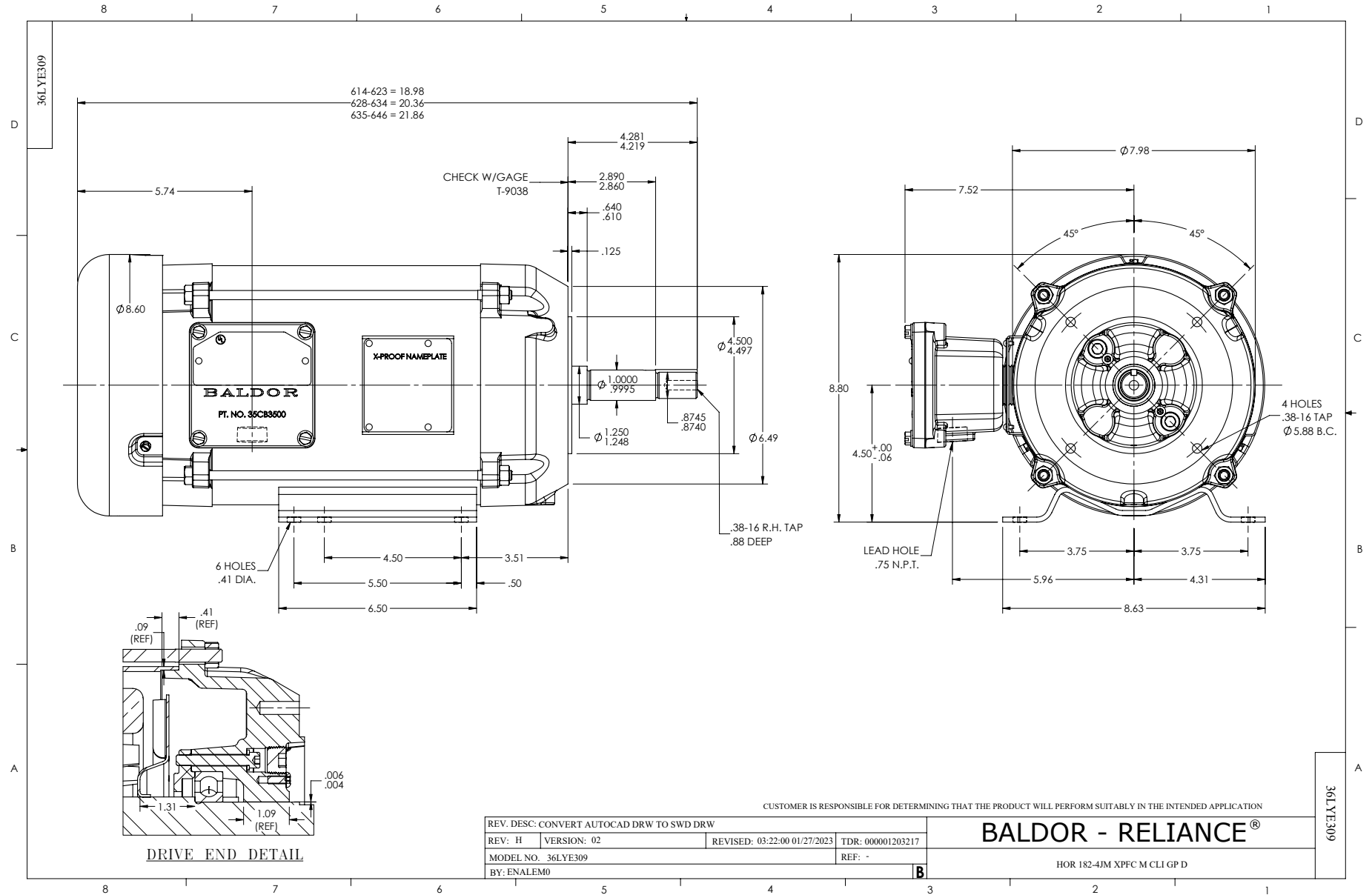
5 HP 3 PH 60 HZ 3469 RPM 460 V 3634M

Typical performance - not guaranteed values.

TORQUES (LB-FT): PO=41.6 PU=26.2 LR=30.5 LRA=59.3



8/14/2024 ACPERF, record # 73675



CD0005

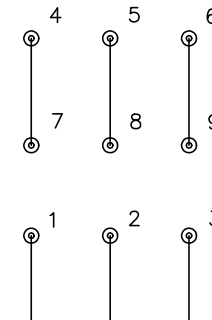


LOW VOLTAGE
(2Y)



LINE

HIGH VOLTAGE
(1Y)



LINE

NOTES:

1. INTERCHANGE ANY TWO LINE LEADS TO REVERSE ROTATION.
2. OPTIONAL THERMOSTATS ARE PROVIDED WHEN SPECIFIED.
3. ACTUAL NUMBER OF INTERNAL PARALLEL CIRCUITS MAY BE A MULTIPLE OF THOSE SHOWN ABOVE.
4. LEAD COLORS ARE OPTIONAL. LEADS MUST ALWAYS BE NUMBERED AS SHOWN.

CD0005

REV. DESC: REVISE TO SHOW OPTIONAL COLORS			
REV. LTR: E	BY: JLP	REVISED: 01/19/99 10:15	TDR: 0171435
S00000		FILE: AAA00005140	MDL: -
		MTL: -	

BALDOR ELECTRIC Co.

3PH, DV, 9 LEADS