

ABB BALDOR RELIANCE III

Customer information packet

JML3608T

5HP, 3450RPM, 1PH, 60HZ, 184JM, 3640LC, TEFC

Class - None

Division - Not Applicable

Specifications

Enclosure	TEFC
Frame	184JM
Frame Material	Steel
Frequency	60.00 Hz
Haz Area Class and Group	None
Haz Area Division	Not Applicable
Motor Letter Type	Cap Start, Cap Run
Output @ Frequency	5.000 HP @ 60 HZ
Phase	1
Synchronous Speed @ Frequency	3600 RPM @ 60 HZ
Voltage @ Frequency	230.0 V @ 60 HZ
Agency Approvals	CSA UR
Ambient Temperature	40 °C
Auxiliary Box	NO AUXILLARY BOX
Auxiliary Box Lead Termination	None
Base Indicator	Rigid
Bearing Grease Type	Polyrex EM (-20F +300F)
Blower	None
Current @ Voltage	22.000 A @ 208.0 V 19.500 A @ 230.0 V
Design Code	L
Drip Cover	No Drip Cover
Duty Rating	CONT
Efficiency @ 100% Load	83.0 %
Electrically Isolated Bearing	Not Electrically Isolated
Feedback Device	NO FEEDBACK
Front Face Code	Standard
Front Shaft Indicator	None
Heater Indicator	No Heater
High Voltage Full Load Amps	19.5 a
Insulation Class	F

Part Detail

Revision	AJ
Type	AC
Mech. spec.	36E510
Base	
Status	PRD/A
Elec. spec.	36WG914
Layout	36LYE510
Eff. date	05-05-2025
CD Diagram	CD0017A02
Poles	02
Leads	2#14 A PH,2#16 B PH
Proprietary	False
Created date	01-01-0001

Inverter Code	Not Inverter
KVA Code	G
Lifting Lugs	No Lifting Lugs
Locked Bearing Indicator	Locked Bearing
Motor Lead Exit	Ko Box
Motor Lead Quantity/Wire Size	2 @ 14 AWG, A PH
Motor Lead Termination	Flying Leads
Motor Standards	NEMA
Motor Type	3640LC
Mounting Arrangement	F1
Number of Poles	2
Overall Length	19.55 IN
Power Factor	99
Product Family	General Purpose
Pulley End Bearing Type	Ball
Pulley Face Code	C-Face
Pulley Shaft Indicator	Tapped & Key
Rodent Screen	None
Service Factor	1.00
Shaft Diameter	0.875 IN
Shaft Extension Location	Pulley End
Shaft Ground Indicator	No Shaft Grounding
Shaft Rotation	Reversible
Shaft Slinger Indicator	Shaft Slinger
Speed	3450 rpm
Speed Code	Single Speed
Starting Method	Direct on line
Thermal Device - Bearing	None
Thermal Device - Winding	None
Vibration Sensor Indicator	No Vibration Sensor
Winding Thermal 1	None
Winding Thermal 2	None

Nameplate

NP1256L										
CAT.NO.	JML3608T									
SPEC.	36E510W914									
HP	5									
VOLTS	230									
AMP	19.5									
RPM	3450									
FRAME	184JM	HZ	60		PH	1				
SER.F.	1.00	CODE	G	DES	L	CLASS	F			
NEMA-NOM-EFF	83	PF	99							
RATING	40C AMB-CONT									
CC										
DE	6207	ODE	6205							
ENCL	TEFC	SN								

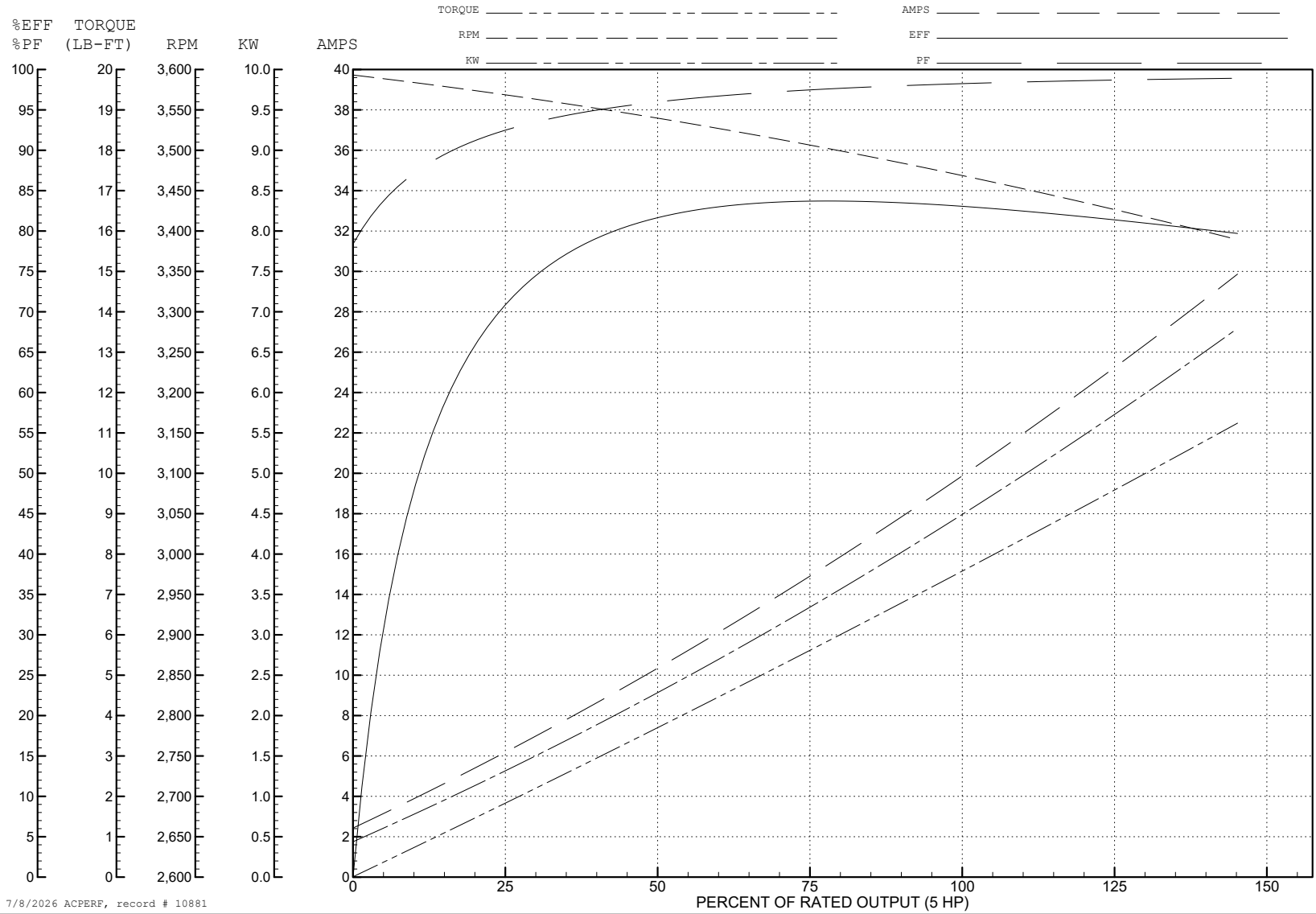
ABB Motors and Mechanical Inc.

WINDING # 36WGW914

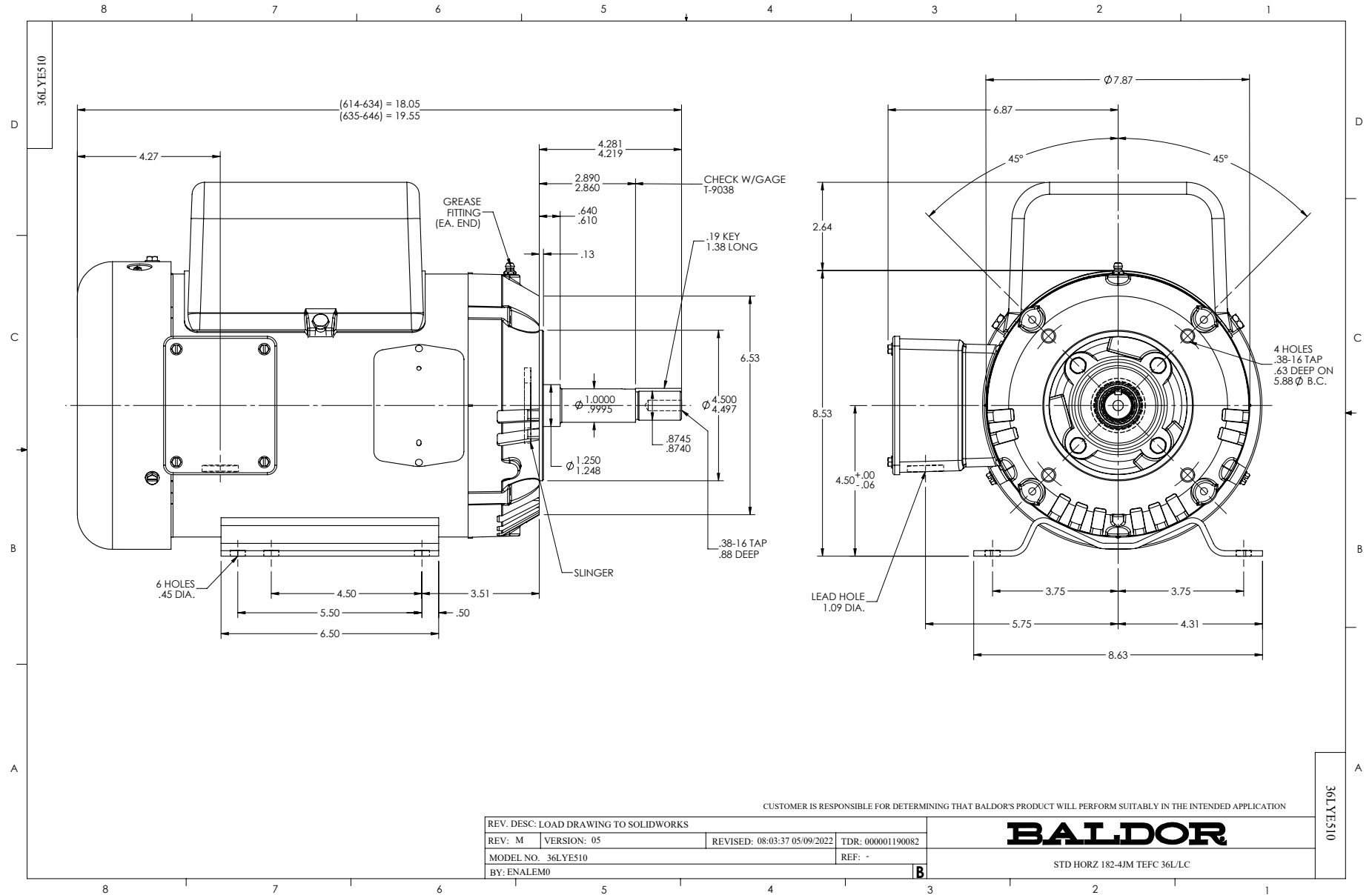
Typical performance - not guaranteed values.

5 HP 1 PH 60 HZ 3450 RPM 230 V 3640LC

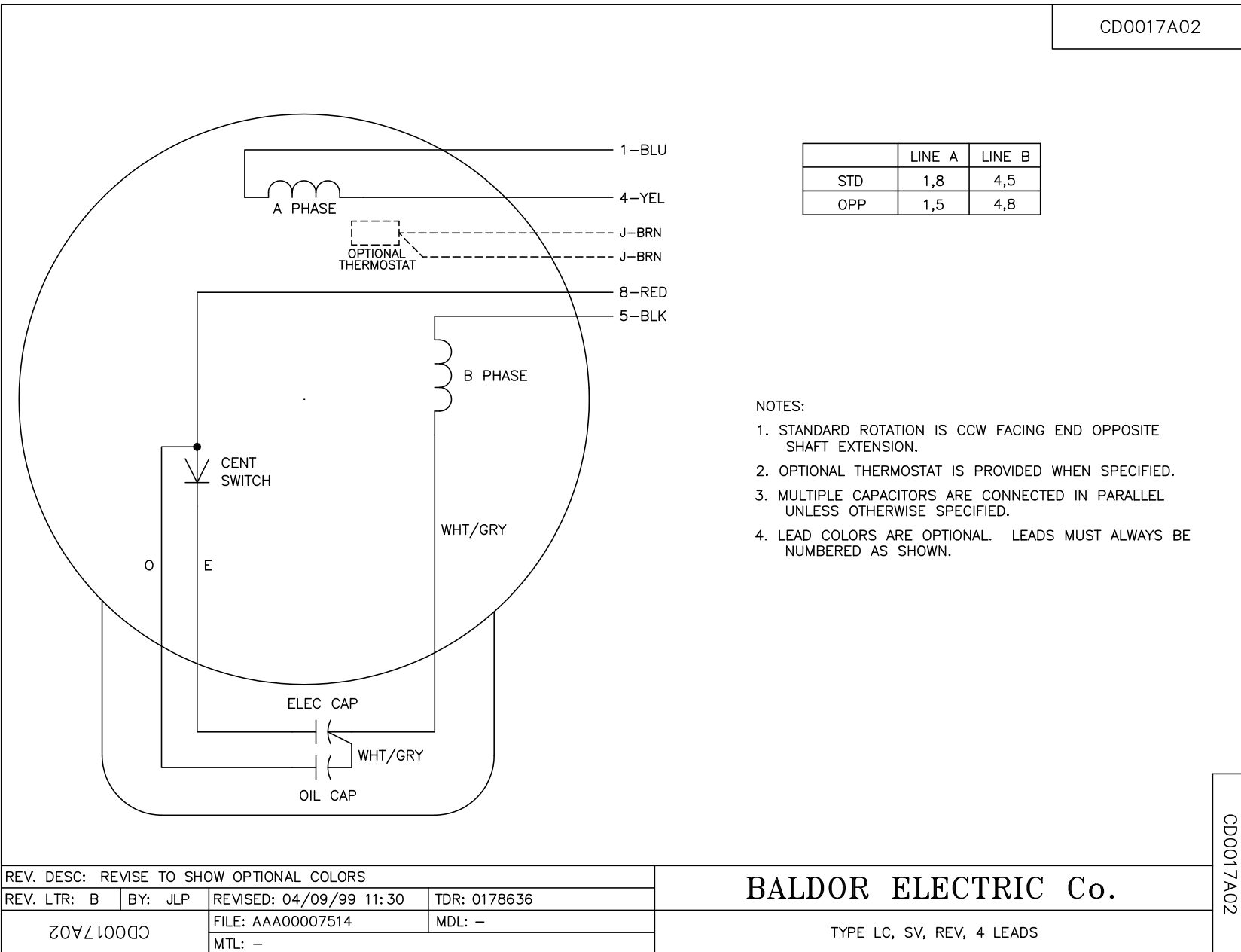
TORQUES (LB-FT): PO=26 PU=12.5 LR=15 LRA=128



7/8/2026 ACPERF, record # 10881



CD0017A02



	LINE A	LINE B
STD	1,8	4,5
OPP	1,5	4,8

NOTES:

1. STANDARD ROTATION IS CCW FACING END OPPOSITE SHAFT EXTENSION.
2. OPTIONAL THERMOSTAT IS PROVIDED WHEN SPECIFIED.
3. MULTIPLE CAPACITORS ARE CONNECTED IN PARALLEL UNLESS OTHERWISE SPECIFIED.
4. LEAD COLORS ARE OPTIONAL. LEADS MUST ALWAYS BE NUMBERED AS SHOWN.

CD0017A02

REV. DESC: REVISE TO SHOW OPTIONAL COLORS			
REV. LTR: B	BY: JLP	REVISED: 04/09/99 11:30	TDR: 0178636
CD0017A02		FILE: AAA00007514	MDL: -
		MTL: -	

BALDOR ELECTRIC Co.

TYPE LC, SV, REV, 4 LEADS