

ABB BALDOR RELIANCE III

Customer information packet

JML1509T

7.5HP, 3450RPM, 1PH, 60HZ, 213JM, 3729L, OPEN

Class - None

Division - Not Applicable

Specifications

Enclosure	OPEN
Frame	213JM
Frame Material	Steel
Frequency	60.00 Hz
Haz Area Class and Group	None
Haz Area Division	Not Applicable
Motor Letter Type	Cap Start, Induction Run
Output @ Frequency	7.500 HP @ 60 HZ
Phase	1
Synchronous Speed @ Frequency	3600 RPM @ 60 HZ
Voltage @ Frequency	230.0 V @ 60 HZ
Agency Approvals	UR CSA
Ambient Temperature	40 °C
Auxiliary Box	NO AUXILLARY BOX
Auxiliary Box Lead Termination	None
Base Indicator	Rigid
Bearing Grease Type	Polyrex EM (-20F +300F)
Blower	None
Current @ Voltage	37.000 A @ 230.0 V
Design Code	L
Drip Cover	No Drip Cover
Duty Rating	CONT
Efficiency @ 100% Load	81.0 %
Electrically Isolated Bearing	Not Electrically Isolated
Feedback Device	NO FEEDBACK
Front Face Code	Standard
Front Shaft Indicator	None
Heater Indicator	No Heater
High Voltage Full Load Amps	37.0 a
Insulation Class	F
Inverter Code	Not Inverter

Part Detail

Revision	BA
Type	AC
Mech. spec.	37R088
Base	
Status	PRD/A
Elec. spec.	37WGX077
Layout	37LYR088
Eff. date	05-14-2024
CD Diagram	CD0017A01
Poles	02
Leads	2#8 A PH,2#14 B PH
Proprietary	False
Created date	01-01-0001

KVA Code	G
Lifting Lugs	No Lifting Lugs
Locked Bearing Indicator	Locked Bearing
Motor Lead Exit	Ko Box
Motor Lead Quantity/Wire Size	2 @ 8 AWG, A PH
Motor Lead Termination	Flying Leads
Motor Standards	NEMA
Motor Type	3729L
Mounting Arrangement	F1
Number of Poles	2
Overall Length	18.19 IN
Power Factor	82
Product Family	General Purpose
Pulley End Bearing Type	Ball
Pulley Face Code	C-Face
Pulley Shaft Indicator	Tapped & Key
Rodent Screen	Included
Service Factor	1.15
Shaft Diameter	0.875 IN
Shaft Extension Location	Pulley End
Shaft Ground Indicator	No Shaft Grounding
Shaft Rotation	Reversible
Shaft Slinger Indicator	Shaft Slinger
Speed	3450 rpm
Speed Code	Single Speed
Starting Method	Direct on line
Thermal Device - Bearing	None
Thermal Device - Winding	None
Vibration Sensor Indicator	No Vibration Sensor
Winding Thermal 1	None
Winding Thermal 2	None

Nameplate

NP1256L									
CAT.NO.	JML1509T								
SPEC.	37R88X77								
HP	7.5								
VOLTS	230								
AMP	37								
RPM	3450								
FRAME	213JM		HZ	60			PH	1	
SER.F.	1.15	CODE	G	DES	L	CLASS	F		
NEMA-NOM-EFF	81	PF	82						
RATING	40C AMB-CONT								
CC									
DE	6309		ODE	6206					
ENCL	OPEN	SN							

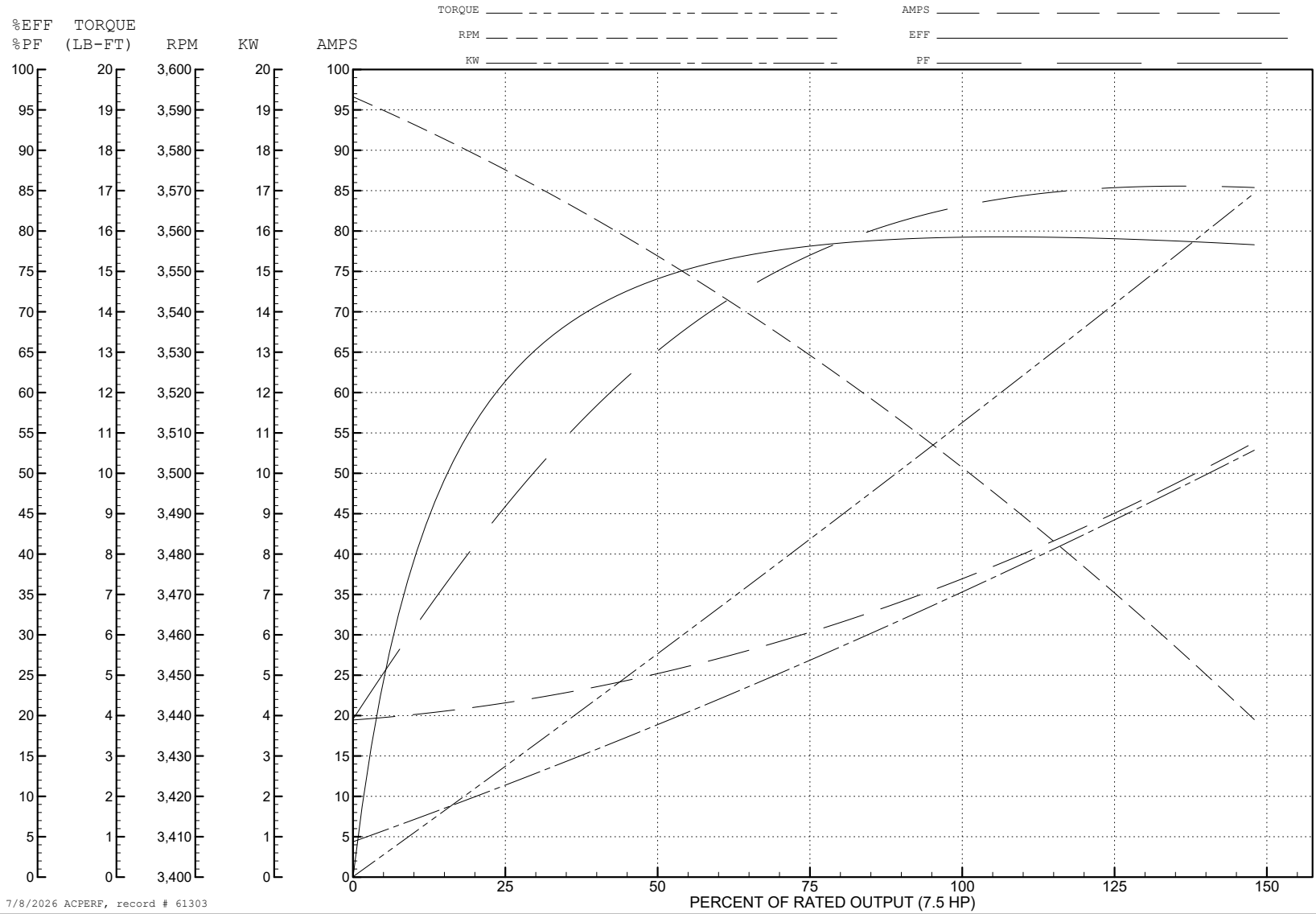
ABB Motors and Mechanical Inc.

WINDING # 37WGx077

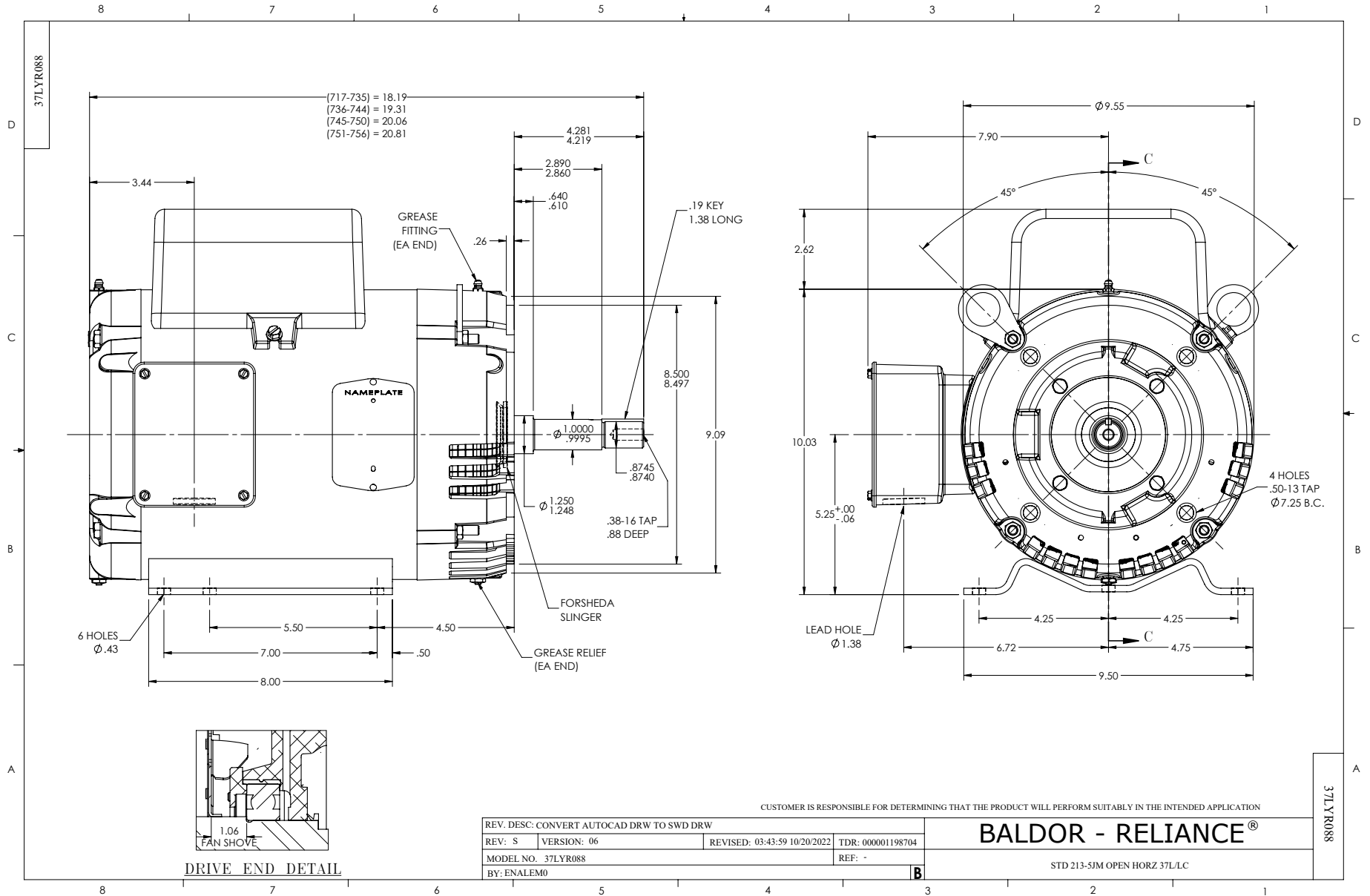
Typical performance - not guaranteed values.

7.5 HP 1 PH 60 HZ 3450 RPM 230 V 3729L

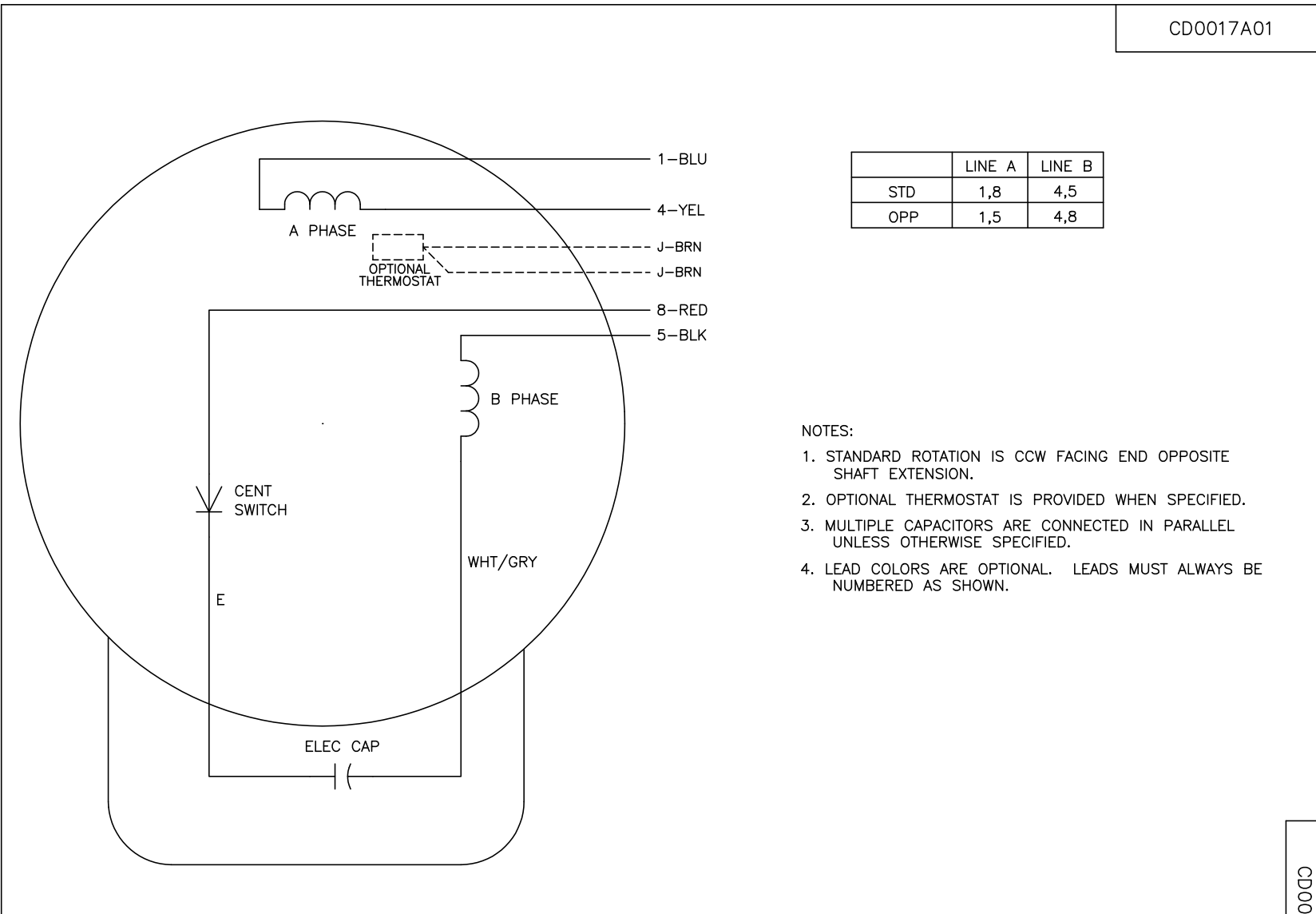
TORQUES (LB-FT): PO=31 PU=17 LR=18 LRA=205



7/8/2026 ACPERF, record # 61303



CD0017A01



	LINE A	LINE B
STD	1,8	4,5
OPP	1,5	4,8

- NOTES:
1. STANDARD ROTATION IS CCW FACING END OPPOSITE SHAFT EXTENSION.
 2. OPTIONAL THERMOSTAT IS PROVIDED WHEN SPECIFIED.
 3. MULTIPLE CAPACITORS ARE CONNECTED IN PARALLEL UNLESS OTHERWISE SPECIFIED.
 4. LEAD COLORS ARE OPTIONAL. LEADS MUST ALWAYS BE NUMBERED AS SHOWN.

CD0017A01

REV. DESC: REVISE TO SHOW OPTIONAL COLORS			
REV. LTR: B	BY: JLP	REVISED: 04/08/99 1:18	TDR: 0178636
10VZ100D		FILE: AAA00007513	MDL: -
		MTL: -	

BALDOR ELECTRIC Co.

TYPE L, SV, REV, 4 LEADS