

ABB BALDOR RELIANCE III

Customer information packet

JMFSWDM41906T-E

20HP, 3540RPM, 3PH, 60HZ, 256JM, TEFC, F1

Class - None

Division - Not Applicable

Specifications

Enclosure	TEFC
Frame	256JM
Frame Material	Stainless Steel
Frequency	60.00 Hz
Haz Area Class and Group	None
Haz Area Division	Not Applicable
Motor Letter Type	Three Phase
Output @ Frequency	20.000 HP @ 60 HZ
Phase	3
Synchronous Speed @ Frequency	3600 RPM @ 60 HZ
Voltage @ Frequency	230.0 V @ 60 HZ 460.0 V @ 60 HZ
Agency Approvals	CSA UR NEMA PREMIUM
Ambient Temperature	40 °C
Auxiliary Box	NO AUXILLARY BOX
Auxiliary Box Lead Termination	None
Base Indicator	Rigid
Bearing Grease Type	POLYREX SHC102 EM (-20F +356F)
Blower	None
Current @ Voltage	46.000 A @ 230.0 V 23.000 A @ 460.0 V
Design Code	A
Drip Cover	No Drip Cover
Duty Rating	CONT
Efficiency @ 100% Load	91.0 %
Electrically Isolated Bearing	Not Electrically Isolated
Feedback Device	NO FEEDBACK
Heater Indicator	No Heater
High Voltage Full Load Amps	23.0 a
Insulation Class	H

Part Detail

Revision	Q
Type	AC
Mech. spec.	
Base	
Status	PRD/A
Elec. spec.	39WGY419
Layout	39LYE754
Eff. date	10-23-2025
CD Diagram	CD0005
Poles	02
Leads	9#10
Proprietary	False
Created date	12-18-2019

Inverter Code	Inverter Duty
KVA Code	K
Lifting Lugs	Standard Lifting Lugs
Locked Bearing Indicator	Locked Bearing
Motor Lead Termination	Flying Leads
Motor Standards	NEMA
Motor Type	3960M
Mounting Arrangement	F1
Number of Poles	2
Overall Length	26.68 IN
Power Factor	90
Product Family	WD All SS Encapsulated
Pulley Face Code	C-Face
Rodent Screen	None
Service Factor	1.00
Shaft Diameter	1.250 IN
Shaft Ground Indicator	No Shaft Grounding
Shaft Rotation	Reversible
Speed	3540 rpm
Speed Code	Single Speed
Starting Method	Direct on line
Thermal Device - Bearing	None
Thermal Device - Winding	None
Vibration Sensor Indicator	No Vibration Sensor
Winding Thermal 1	None
Winding Thermal 2	None

Nameplate

NP1953L01									
CAT.NO.	JMFSWDM41906T-E								
SPEC.	39-0000-0236								
HP	20								
VOLTS	230/460								
AMPS	46/23								
R.P.M.	3540								
FRAME	256JM	HZ	60	PH	3				
SER.F.	1.00	CODE	K	DES.	A	CLASS	H		
NEMA NOM. EFF.	91	P.F.	90						
RATING	40C AMB-CONT								
CC	010A	USABLE AT 208V	N/A						
DE	6309	ODE	6309						
ENCL	TEFC	SN							
	2:1 VT/10:1 VT								

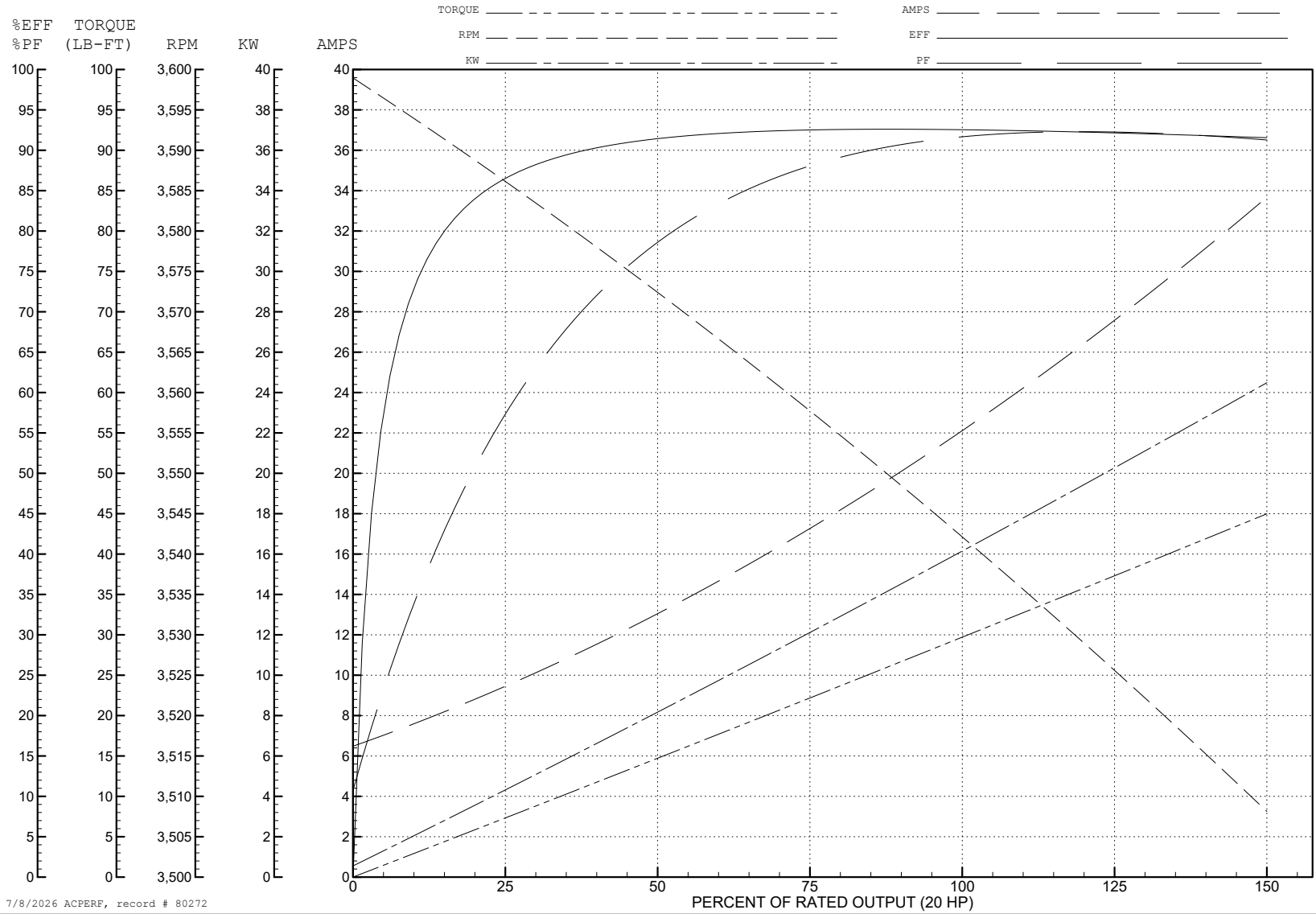
ABB Motors and Mechanical Inc.

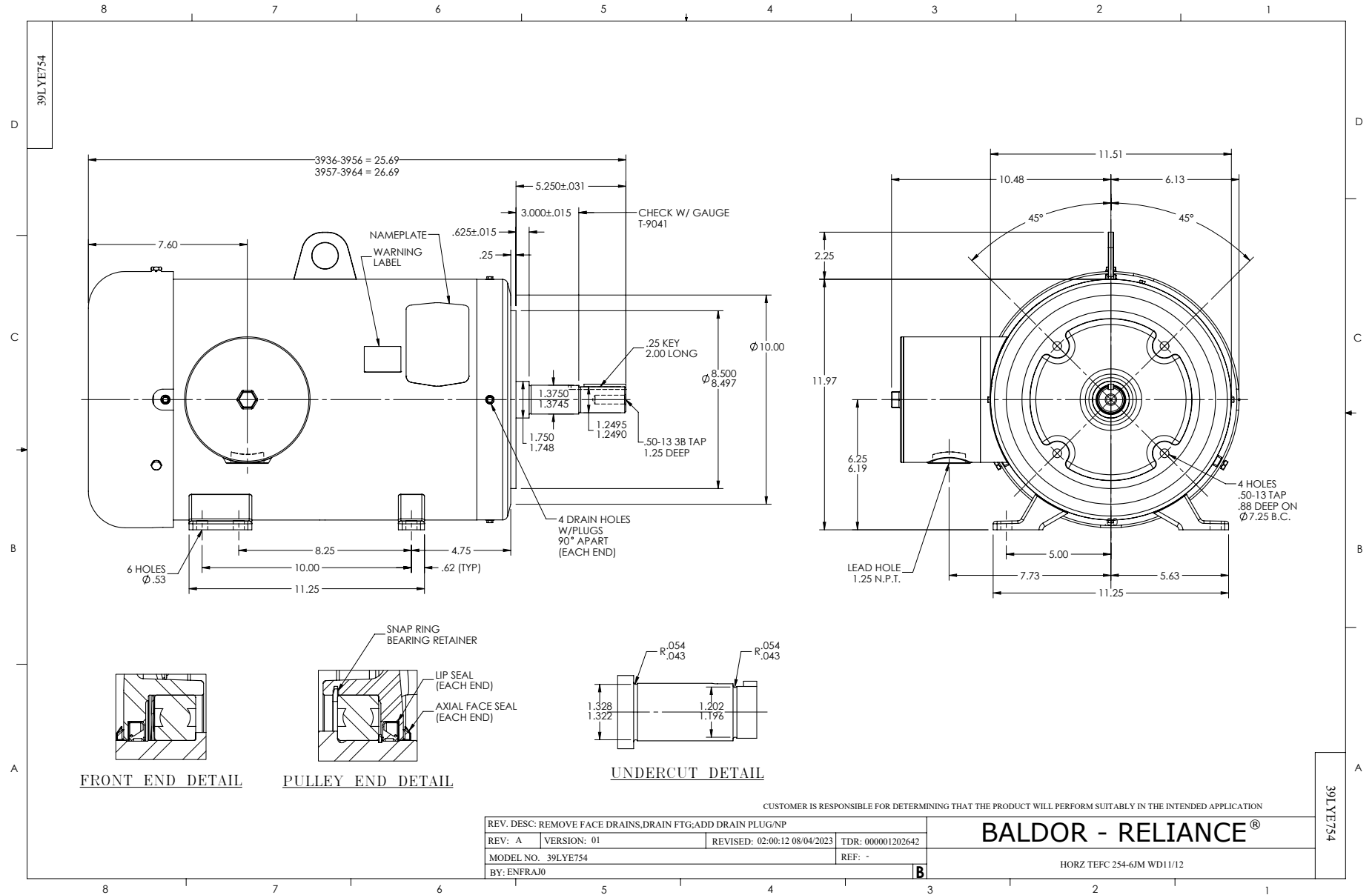
WINDING # 39WGY419

Typical performance - not guaranteed values.

20 HP 3 PH 60 HZ 3540 RPM 460 V 3960M

TORQUES (LB-FT): PO=161 PU=64.7 LR=78.2 LRA=221





CD0005



LOW VOLTAGE
(2Y)



LINE

HIGH VOLTAGE
(1Y)



LINE

NOTES:

1. INTERCHANGE ANY TWO LINE LEADS TO REVERSE ROTATION.
2. OPTIONAL THERMOSTATS ARE PROVIDED WHEN SPECIFIED.
3. ACTUAL NUMBER OF INTERNAL PARALLEL CIRCUITS MAY BE A MULTIPLE OF THOSE SHOWN ABOVE.
4. LEAD COLORS ARE OPTIONAL. LEADS MUST ALWAYS BE NUMBERED AS SHOWN.

CD0005

REV. DESC: REVISE TO SHOW OPTIONAL COLORS

REV. LTR: E BY: JLP REVISED: 01/19/99 10:15 TDR: 0171435

500000

FILE: AAA00005140

MDL: -

MTL: -

BALDOR ELECTRIC Co.

3PH, DV, 9 LEADS