

ABB BALDOR RELIANCE III

Customer information packet

JMFSWDM3714T-E

10HP, 1770RPM, 3PH, 60HZ, 215JM, 3756M, TEFC, F

Class - None

Division - Not Applicable

Specifications

Enclosure	TEFC
Frame	215JM
Frame Material	Stainless Steel
Frequency	60.00 Hz
Haz Area Class and Group	None
Haz Area Division	Not Applicable
Motor Letter Type	Three Phase
Output @ Frequency	10.000 HP @ 60 HZ
Phase	3
Synchronous Speed @ Frequency	1800 RPM @ 60 HZ
Voltage @ Frequency	230.0 V @ 60 HZ 460.0 V @ 60 HZ
Agency Approvals	CSA CSA EEV NEMA PREMIUM UR
Ambient Temperature	40 °C
Auxiliary Box	NO AUXILLARY BOX
Auxiliary Box Lead Termination	None
Base Indicator	Rigid
Bearing Grease Type	Polyrex EM (-20F +300F)
Blower	None
Current @ Voltage	26.700 A @ 208.0 V 25.000 A @ 230.0 V 12.500 A @ 460.0 V
Design Code	B
Drip Cover	No Drip Cover
Duty Rating	CONT
Efficiency @ 100% Load	92.4 %
Electrically Isolated Bearing	Not Electrically Isolated
Feedback Device	NO FEEDBACK
Front Face Code	Standard

Part Detail

Revision	P
Type	AC
Mech. spec.	37Q257
Base	
Status	PRD/A
Elec. spec.	37WGS251
Layout	37LYQ257
Eff. date	06-24-2024
CD Diagram	CD0180
Poles	04
Leads	9#14
Proprietary	False
Created date	10-12-2017

Front Shaft Indicator	None
Heater Indicator	No Heater
High Voltage Full Load Amps	12.5 a
Insulation Class	H
Inverter Code	Inverter Ready
KVA Code	K
Lifting Lugs	Standard Lifting Lugs
Locked Bearing Indicator	Locked Bearing
Motor Lead Exit	Ko Box
Motor Lead Quantity/Wire Size	9 @ 14 AWG
Motor Lead Termination	Flying Leads
Motor Standards	NEMA
Motor Type	3756M
Mounting Arrangement	F1
Number of Poles	4
Overall Length	23.56 IN
Power Factor	81
Product Family	WD All SS Encapsulated
Pulley End Bearing Type	Sealed Bearing
Pulley Face Code	C-Face
Pulley Shaft Indicator	Tapped & Key
Rodent Screen	None
RoHS Status	ROHS COMPLIANT
Service Factor	1.15
Shaft Diameter	0.875 IN
Shaft Extension Location	Pulley End
Shaft Ground Indicator	No Shaft Grounding
Shaft Rotation	Reversible
Shaft Slinger Indicator	No Slinger
Speed	1770 rpm
Speed Code	Single Speed
Starting Method	Direct on line
Thermal Device - Bearing	None
Thermal Device - Winding	None

Vibration Sensor Indicator

No Vibration Sensor

Winding Thermal 1

None

Winding Thermal 2

None

Nameplate

NP4427AAA05										
CAT #	JMFSWDM3714T-E			WGT		LBS				
SPEC	37Q257S251G1			ENCL	TEFC					
SER #		CC	010A	IP	69					
HP	10	MAG CUR	12.6/6.3							
VOLTS	230/460		NEMA NOM. EFF	92.4						
AMPS	25/12.5		PF	81						
RATING	40C AMB-CONT									
RPM	1770	MAX RPM	2700							
FRAME	215JM	HZ	60	CODE	K	CLASS	H			
SER.F.	1.15	SF AMP		PH	3	DES	B			
DE	6309	ODE	6307							
LUBRICATION	POLYREX EM									
ID LOGO	INV TYPE:	VPWM	CHP	60	TO	90	1.5:1			
ID LOGO	WK2	1.38	CT	15	TO	60	4:1			
ID LOGO	SL HZ	1	VT	6	TO	60	10:1			
YR							QR			

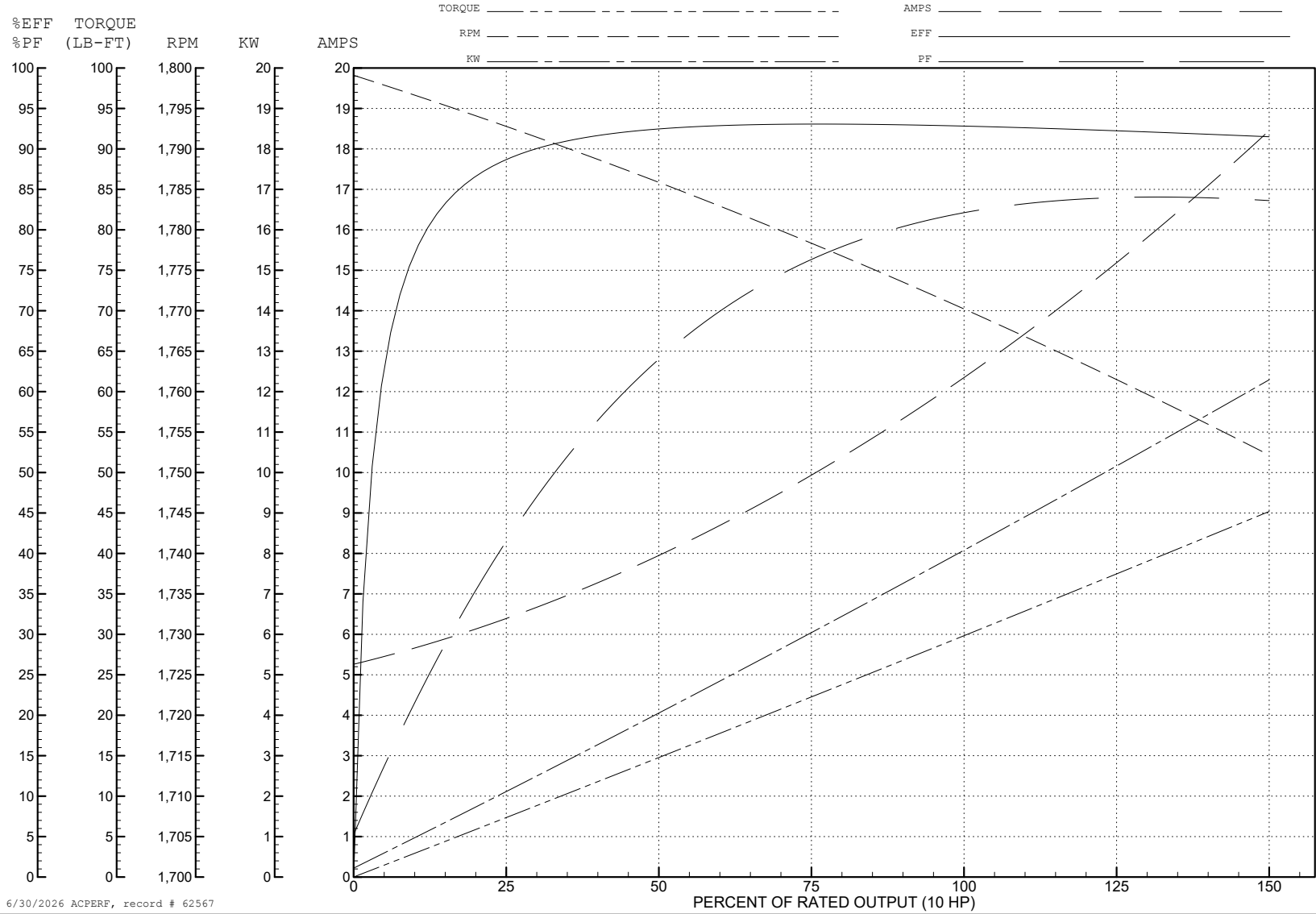
ABB Motors and Mechanical Inc.

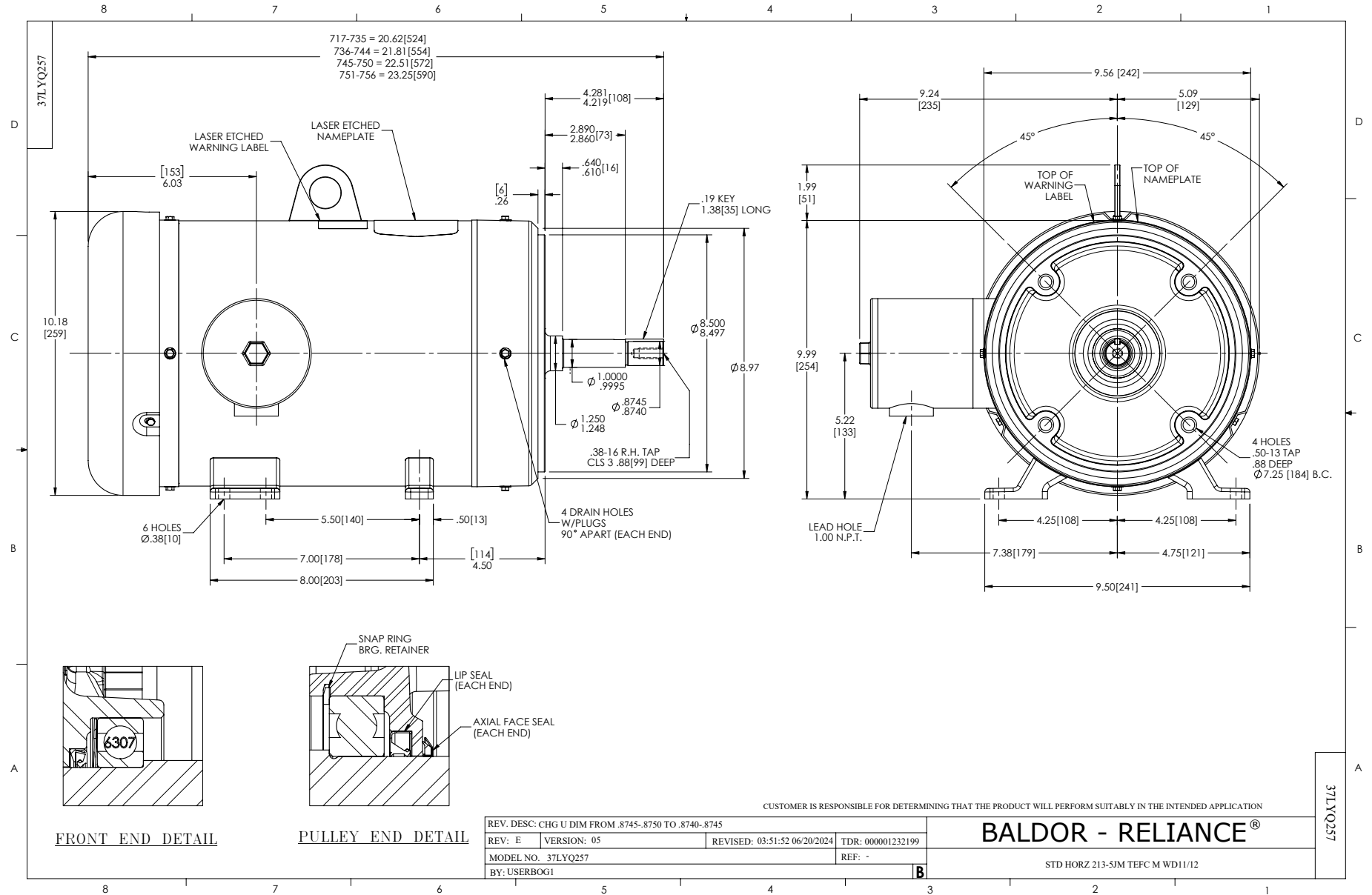
WINDING # 37WGS251

Typical performance - not guaranteed values.

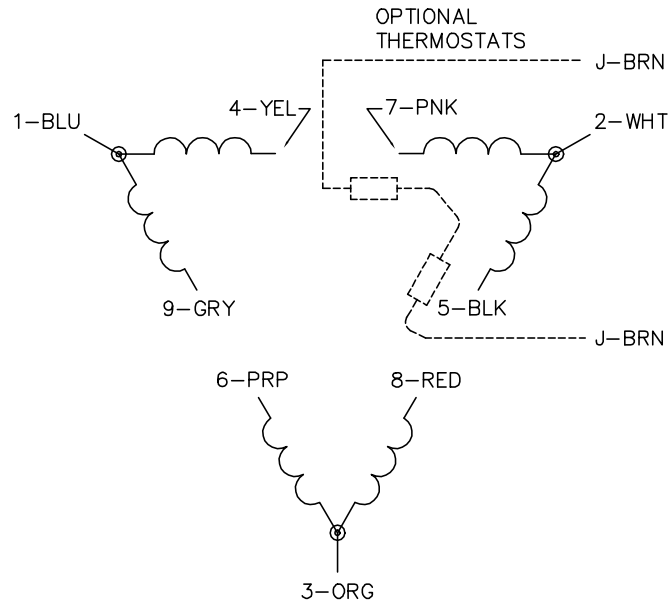
10 HP 3 PH 60 HZ 1770 RPM 460 V 3756M

TORQUES (LB-FT): PO=102 PU=53.6 LR=74.2 LRA=105

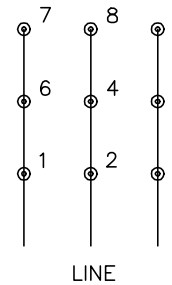




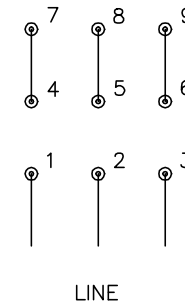
CD0180



LOW VOLTAGE
(2D)



HIGH VOLTAGE
(1D)



NOTES:

1. INTERCHANGE ANY TWO LINE LEADS TO REVERSE ROTATION.
2. OPTIONAL THERMOSTATS ARE PROVIDED WHEN SPECIFIED.
3. ACTUAL NUMBER OF INTERNAL PARALLEL CIRCUITS MAY BE A MULTIPLE OF THOSE SHOWN ABOVE.
4. LEAD COLORS ARE OPTIONAL. LEADS MUST ALWAYS BE NUMBERED AS SHOWN.

CD0180

REV. DESC: ADD CLASS CONN00000007		
REV. LTR: D	VERSION: 01	TDR: 000001099922
FILE: \AAA\00005\148	REVISED: 10: 25: 29 02/19/2019	BY: ENBRIRO
MTL: -	© □	

BALDOR - RELIANCE®

3PH, DV, 9 LEADS, DELTA CONNECTION

SH 1 of 1