



Customer information packet

JMFSWDM3613T-E

5HP, 3500RPM, 3PH, 60HZ, 184JM, 3634M, TEFC, F1

Class - None

Division - Not Applicable

Specifications

Enclosure	TEFC
Frame	184JM
Frame Material	Stainless Steel
Frequency	60.00 Hz
Haz Area Class and Group	None
Haz Area Division	Not Applicable
Motor Letter Type	Three Phase
Output @ Frequency	5.000 HP @ 60 HZ
Phase	3
Synchronous Speed @ Frequency	3600 RPM @ 60 HZ
Voltage @ Frequency	230.0 V @ 60 HZ 460.0 V @ 60 HZ
Ambient Temperature	40 °C
Auxiliary Box	NO AUXILLARY BOX
Auxiliary Box Lead Termination	None
Base Indicator	Rigid
Bearing Grease Type	Polyrex EM (-20F +300F)
Blower	None
Current @ Voltage	11.200 A @ 230.0 V 12.000 A @ 208.0 V 5.600 A @ 460.0 V
Design Code	B
Drip Cover	No Drip Cover
Duty Rating	CONT
Efficiency @ 100% Load	89.5 %
Electrically Isolated Bearing	Not Electrically Isolated
Feedback Device	NO FEEDBACK
Front Face Code	Standard
Front Shaft Indicator	None
Heater Indicator	No Heater
High Voltage Full Load Amps	5.6 a
Insulation Class	H

Part detail

Revision	P
Type	AC
Mech. spec.	36R563
Base	
Status	PRD/A
Elec. spec.	36WGT149
Layout	36LYR563
Eff. date	11-12-2025
CD Diagram	CD0005
Poles	02
Leads	9#16,0#,0#,0# Y
Proprietary	False
Created date	08-18-2017

Inverter Code	Inverter Ready
KVA Code	L
Lifting Lugs	Standard Lifting Lugs
Locked Bearing Indicator	Locked Bearing
Motor Lead Exit	Ko Box
Motor Lead Quantity/Wire Size	@ AWG 9 @ 16 AWG
Motor Lead Termination	Flying Leads
Motor Standards	NEMA
Motor Type	3634M
Mounting Arrangement	F1
Number of Poles	2
Overall Length	18.22 IN
Power Factor	95
Product Family	WD All SS Encapsulated
Pulley End Bearing Type	Sealed Bearing
Pulley Face Code	C-Face
Pulley Shaft Indicator	Standard
Rodent Screen	None
RoHS Status	ROHS COMPLIANT
Service Factor	1.15
Shaft Diameter	0.875 IN
Shaft Extension Location	Pulley End
Shaft Ground Indicator	No Shaft Grounding
Shaft Rotation	Reversible
Shaft Slinger Indicator	Shaft Slinger
Speed	3500 rpm
Speed Code	Single Speed
Starting Method	Direct on line
Thermal Device - Bearing	None
Thermal Device - Winding	None
Vibration Sensor Indicator	No Vibration Sensor
Winding Thermal 1	None
Winding Thermal 2	None

AC Induction Motor Performance Data

Record # 57382

Typical performance - not guaranteed values

Winding: 36WGT149-R045		Type: 3634M	Enclosure: TEFC	
Nameplate Data			460 V, 60 Hz: High Voltage Connection	
Rated Output (HP)	5	Full Load Torque	7.5 LB-FT	
Volts	230/460	Start Configuration	direct on line	
Full Load Amps	11.2/5.6	Breakdown Torque	39 LB-FT	
R.P.M.	3500	Pull-up Torque	28 LB-FT	
Hz	60 Phase	Locked-rotor Torque	31 LB-FT	
NEMA Design Code	B KVA Code	Starting Current	62.5 A	
Service Factor (S.F.)	1.15	No-load Current	1.7 A	
NEMA Nom. Eff.	89.5 Power Factor	Line-line Res. @ 25°C	2.09 Ω	
Rating - Duty	40C AMB-CONT	Temp. Rise @ Rated Load	86°C	
S.F. Amps		Temp. Rise @ S.F. Load	102°C	
		Locked-rotor Power Factor	44.4	
		Rotor inertia	0.152 LB-FT ²	

Load Characteristics 460 V, 60 Hz, 5 HP

% of Rated Load	25	50	75	100	125	150	S.F.
Power Factor	62	83	89	93	93	93	93
Efficiency	84.5	89	90	89.6	88.8	87.9	89.1
Speed	3567	3539	3510	3480	3447	3412	3460
Line amperes	2.3	3.2	4.4	5.6	7	8.4	6.44

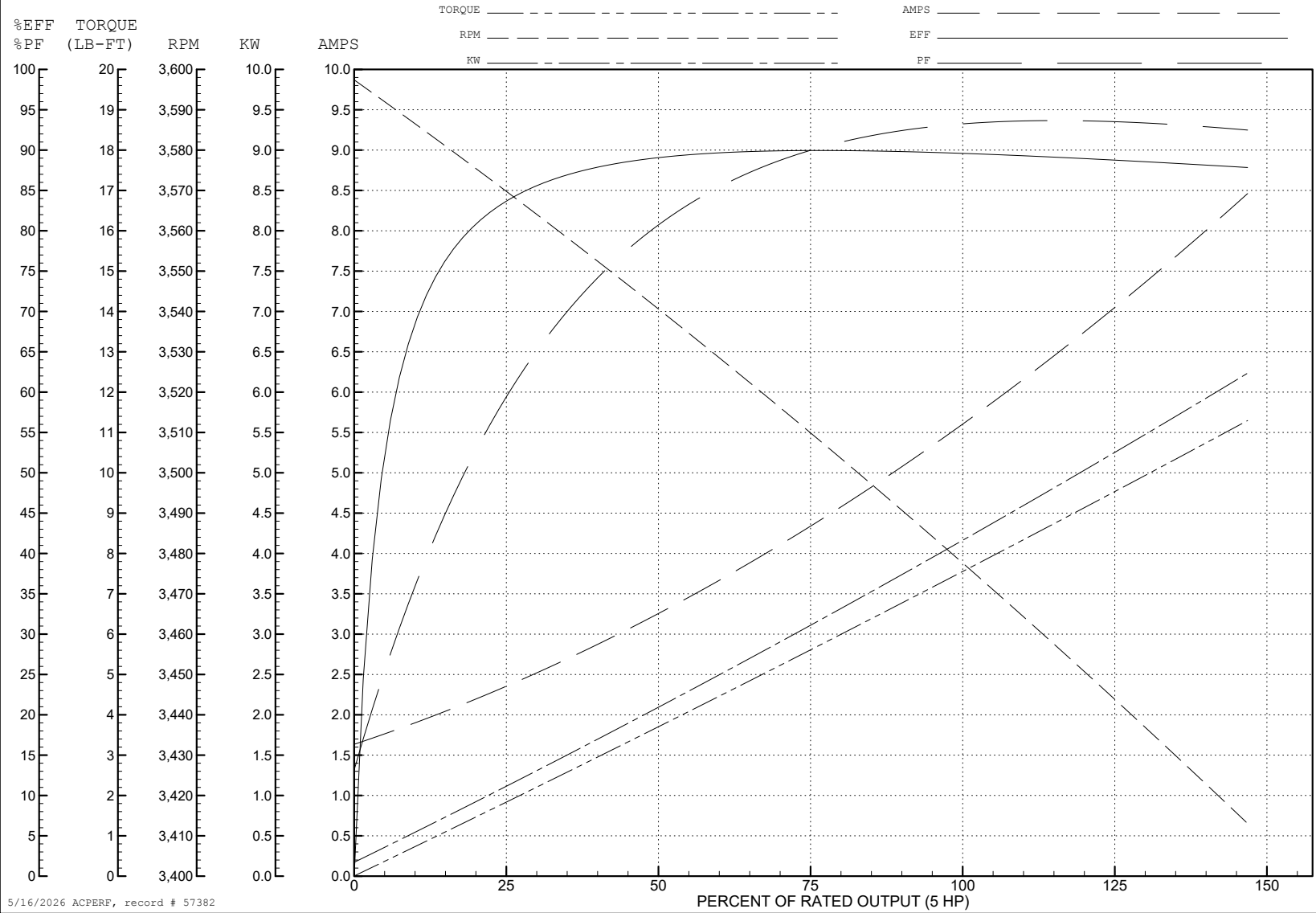
ABB Motors and Mechanical Inc.

WINDING # 36WGT149

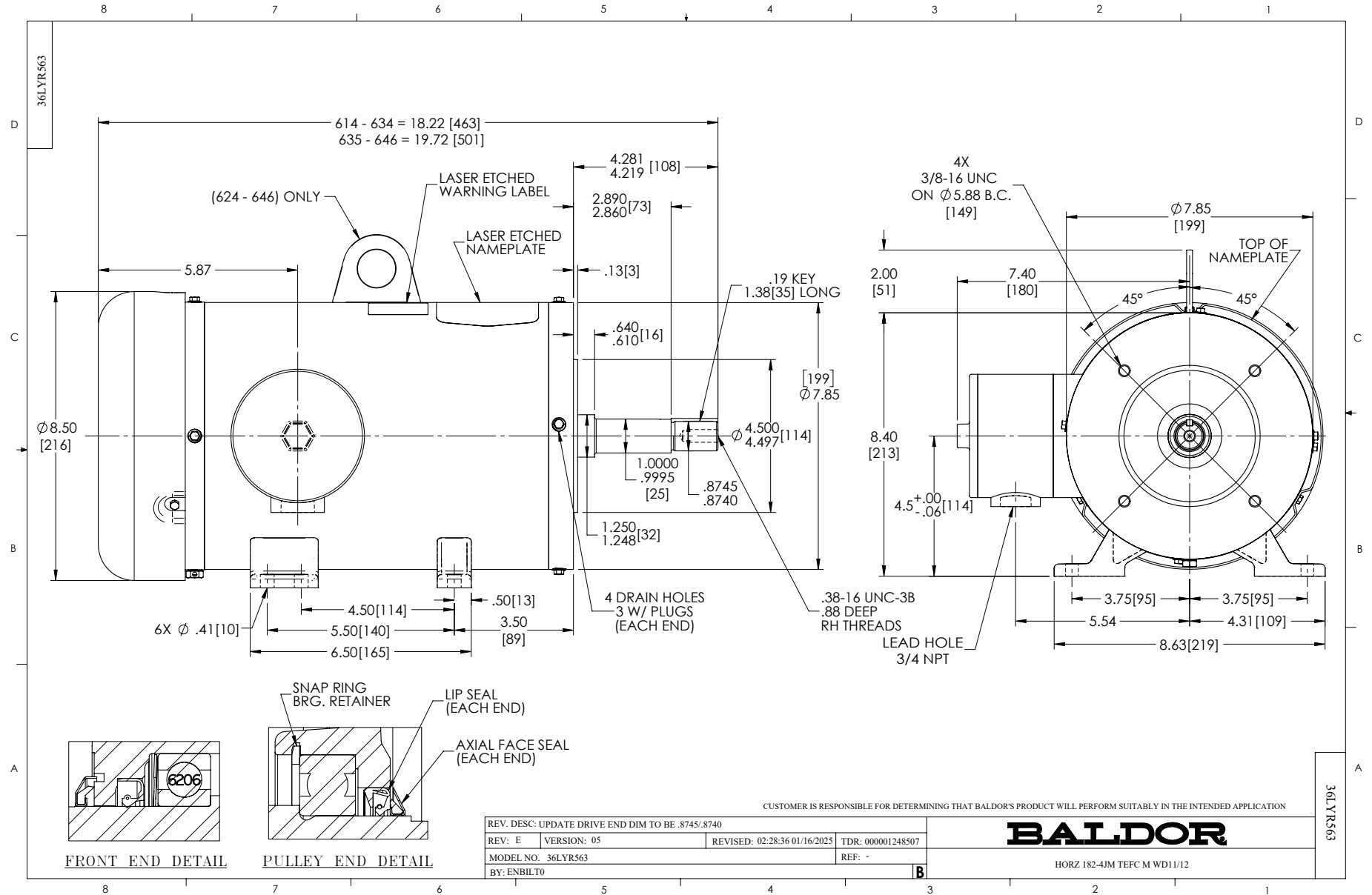
5 HP 3 PH 60 HZ 3500 RPM 460 V 3634M

Typical performance - not guaranteed values.

TORQUES (LB-FT): PO=39 PU=28 LR=31 LRA=62.5



5/16/2026 ACPERF, record # 57382



CD0005



LOW VOLTAGE
(2Y)



LINE

HIGH VOLTAGE
(1Y)



LINE

NOTES:

1. INTERCHANGE ANY TWO LINE LEADS TO REVERSE ROTATION.
2. OPTIONAL THERMOSTATS ARE PROVIDED WHEN SPECIFIED.
3. ACTUAL NUMBER OF INTERNAL PARALLEL CIRCUITS MAY BE A MULTIPLE OF THOSE SHOWN ABOVE.
4. LEAD COLORS ARE OPTIONAL. LEADS MUST ALWAYS BE NUMBERED AS SHOWN.

CD0005

REV. DESC: REVISE TO SHOW OPTIONAL COLORS			
REV. LTR: E	BY: JLP	REVISED: 01/19/99 10:15	TDR: 0171435
S00000		FILE: AAA00005140	MDL: -
		MTL: -	

BALDOR ELECTRIC Co.

3PH, DV, 9 LEADS