

**BALDOR • RELIANCE**

---

# Customer information packet

## JMEWDM4313T

75HP, 3555RPM, 3PH, 60HZ, 365TCZ, TEFC, F1

Class - None

Division - Not Applicable

## Specifications

Enclosure	TEFC
Frame	365TCZ
Frame Material	Iron
Frequency	60.00 Hz
Haz Area Class and Group	None
Haz Area Division	Not Applicable
Motor Letter Type	Three Phase
Output @ Frequency	75.000 HP @ 60 HZ
Phase	3
Synchronous Speed @ Frequency	3600 RPM @ 60 HZ
Voltage @ Frequency	230.0 V @ 60 HZ 460.0 V @ 60 HZ
Agency Approvals	CSA EEV CCSA US
Ambient Temperature	40 °C
Auxiliary Box	NO AUXILLARY BOX
Base Indicator	Rigid
Bearing Grease Type	Polyrex EM (-20F +300F)
Current @ Voltage	161.000 A @ 230.0 V 80.700 A @ 460.0 V
Design Code	B
Drip Cover	No Drip Cover
Duty Rating	CONT
Efficiency @ 100% Load	94.5 %
Feedback Device	NO FEEDBACK
Heater Indicator	No Heater
High Voltage Full Load Amps	80.7 a
Insulation Class	F
Inverter Code	Inverter Ready
IP Rating	NONE
KVA Code	G
Lifting Lugs	Standard Lifting Lugs

## Part detail

Revision	B
Type	AC
Mech. spec.	
Base	
Status	PRD/A
Elec. spec.	A36WG0319
Layout	617436-346
Eff. date	08-30-2023
CD Diagram	416820-002
Poles	02
Leads	3#2,6#4
Proprietary	False
Created date	10-01-2019

<b>Motor Lead Quantity/Wire Size</b>	3 @ 2 AWG
<b>Motor Standards</b>	NEMA
<b>Motor Type</b>	A36068M
<b>Mounting Arrangement</b>	F1
<b>Number of Poles</b>	2
<b>Overall Length</b>	33.11 IN
<b>Power Factor</b>	92
<b>Product Family</b>	Washdown Features
<b>Pulley End Bearing Type</b>	Ball
<b>Pulley Face Code</b>	C-Face
<b>Service Factor</b>	1.15
<b>Shaft Diameter</b>	1.249 IN
<b>Shaft Ground Indicator</b>	No Shaft Grounding
<b>Shaft Rotation</b>	Reversible
<b>Shaft Slinger Indicator</b>	Shaft Slinger
<b>Speed</b>	3555 rpm
<b>Speed Code</b>	Single Speed
<b>Starting Method</b>	Direct on line
<b>Thermal Device - Bearing</b>	None
<b>Thermal Device - Winding</b>	None

**Nameplate**

---

NP2496L	
MOBIL POLYREX EM	

---

**NP2428L**

<b>SPEC NO.</b>	A36-7832-0319	<b>CAT.NO.</b>	JMEWDM4313T	<b>FRAME</b>	365TCZ
<b>HP</b>	75	<b>VOLTS</b>	230/460	<b>PHASE</b>	3
				<b>DESIGN</b>	B
				<b>TYPE</b>	P
<b>RPM</b>	3555	<b>AMPS</b>	161/80.7	<b>HZ</b>	60
				<b>AMB</b>	40
				<b>SF</b>	1.15
<b>DRIVE END BEARING</b>	65BC03JGG30A	<b>DUTY</b>	CONT	<b>INSUL.CLASS</b>	F
<b>OPP D.E. BEARING</b>	65BC03JGG30A	<b>ENCL</b>	TEFC	<b>CODE</b>	G
<b>SER.NO.</b>		<b>POWER FACTOR</b>	92	<b>NEMA-NOM-EFFICIENCY</b>	94.5
				<b>MAX CORR KVAR</b>	5
				<b>GUARANTEED EFFICIENCY</b>	93.6
	IP55			<b>NEMA NOM/CSA QUOTED EFF</b>	
	4:1CT AND 4:1VT ON VPWM INVERT			ER, 1.00SF	<b>MOTOR WEIGHT</b>

REL. S. O.	FRAME	HP	TYPE	PHASE/ HERTZ	RPM	VOLTS
	365TC	75	P	3/60	3555	230/460
AMPS	DUTY	AMB <sup>o</sup> C/ INSUL.	S. F.	NEMA DESIGN	CODE LETTER	ENCL.
161/80.7	CONT	40/F	1.15	B	G	TEFC
E/S	ROTOR	TEST S. O.	TEST DATE	STATOR RES. @25 <sup>o</sup> C OHMS (BETWEEN LINES)		
892019	418141005TE	---	---	.0186/.0744		
<b>PERFORMANCE</b>						
LOAD	HP	AMPERES	RPM	% POWER FACTOR	% EFFICIENCY	
NO LOAD	0	15.5	3600	8.92	0	
1/4	18.8	24.5	3589	77.9	92.0	
2/4	37.5	40.8	3578	90.8	94.8	
3/4	56.2	60.0	3567	92.2	95.3	
4/4	75.0	80.7	3555	91.6	95.1	
5/4	93.8	102	3542	90.9	94.6	
<b>SPEED TORQUE</b>						
	RPM	TORQUE % FULL LOAD	TORQUE LB.-FT.	AMPERES		
LOCKED ROTOR	0	218	242	536		
PULL UP	1565	190	210	440		
BREAKDOWN	3395	230	255	259		
FULL LOAD	3555	100	111	80.7		

AMPERES SHOWN FOR 460. VOLT CONNECTION. IF OTHER VOLTAGE CONNECTIONS ARE AVAILABLE, THE AMPERES WILL VARY INVERSELY WITH THE RATED VOLTAGE

REMARKS: TYPICAL DATA  
 XE MOTOR-NEMA NOM. EFF. 94.5 %  
 GUARANTEED MIN. EFF. 93.6 %

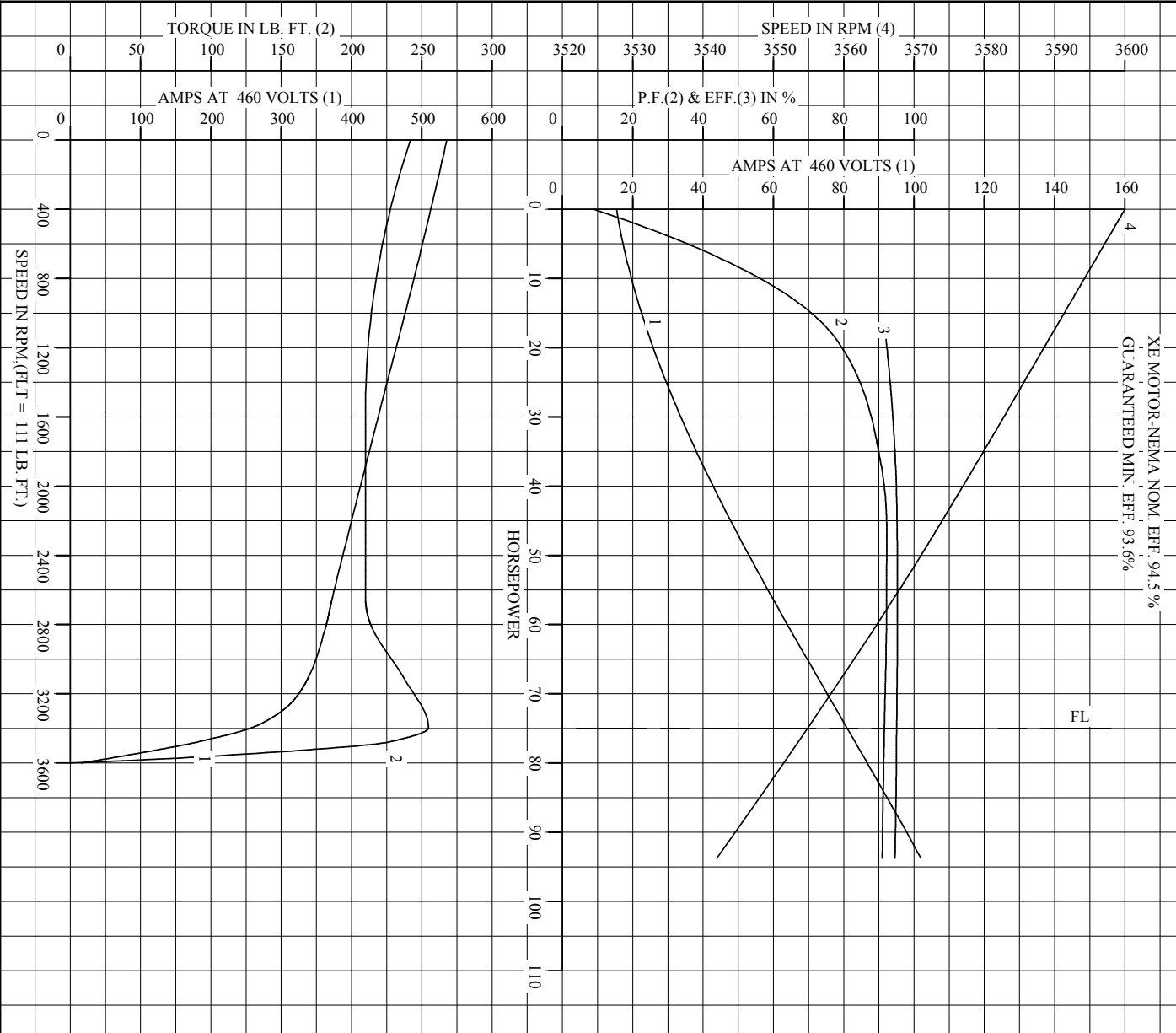


DR. BY J. J. HARRISON  
 CK. BY G. R. WEBB  
 APP. BY W. L. SMITH  
 DATE 10/16/02

**A-C MOTOR PERFORMANCE DATA**  
**A36WG0319-R001**  
 ISSUE DATE 04/14/21

REL. S. O.		RPM	3555	S. F.	1.15	ROTOR	4181410051E
FRAME	365TC	VOLTS	230/460	NEMA DESIGN	B	TEST S. O.	TYPICAL DATA
HP	75	AMPS	161/80.7	CODE LETTER	G	TEST DATE	---
TYPE	P	DUTY	CONT	ENCLOSURE	TEFC	STATOR RES. @ 25 °C	.0186 / .0744
PHASR/HERTZ	3/60	AMB °C/INSUL	40/F	E/S	892019	OHMS (BETWEEN LINES)	

XE MOTOR-NEMA NOM. EFF. 94.5%  
 GUARANTEED MIN. EFF. 93.6%



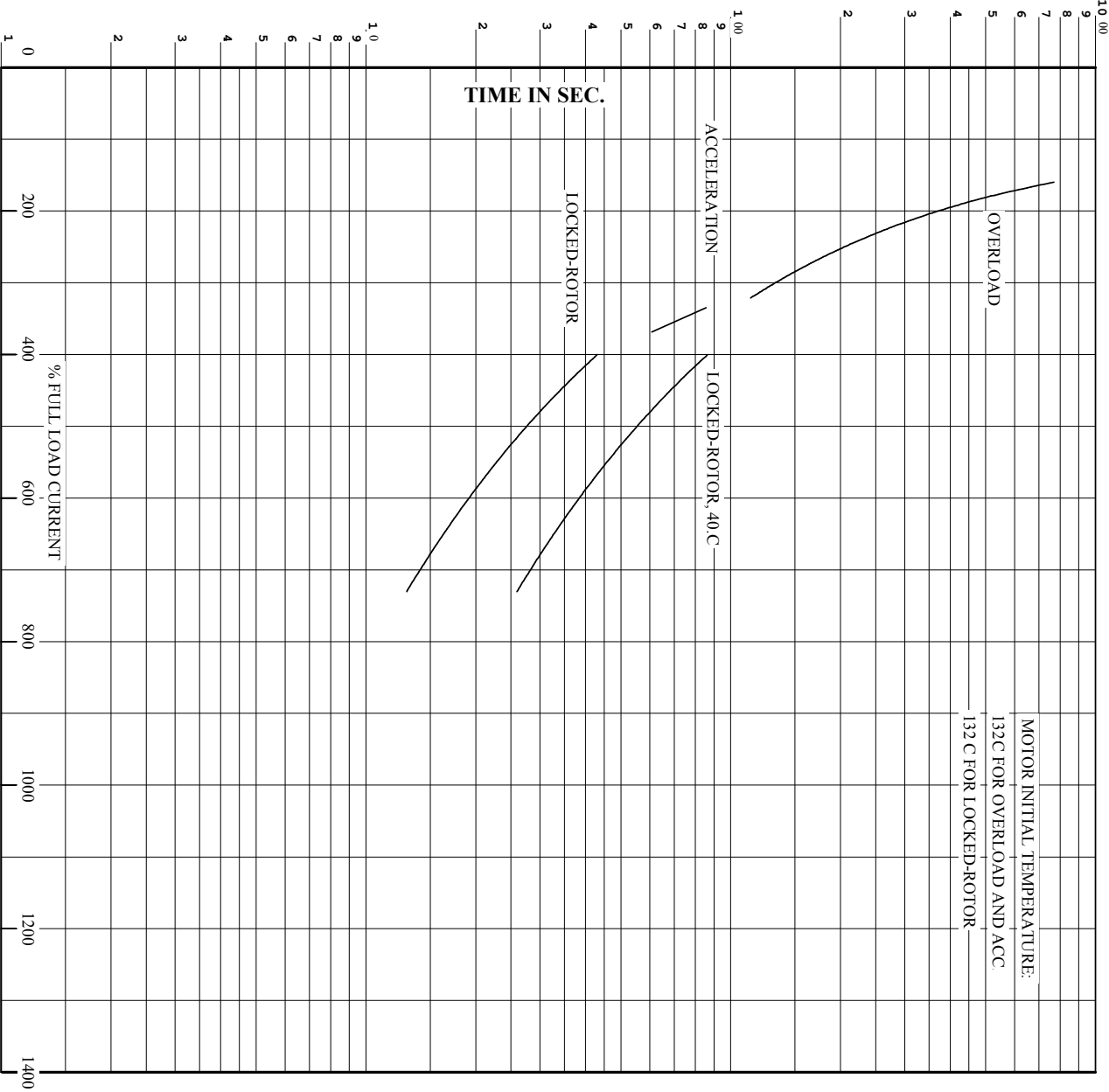
AMPERES SHOWN FOR 460 VOLT CONNECTION. IF OTHER VOLTAGE CONNECTIONS ARE AVAILABLE, THE AMPERES WILL VARY INVERSELY WITH THE RATED VOLTAGE.



DR. BY J. HARRISON  
 CK. BY G. R. WEBB  
 App. BY W. L. SMITH  
 DATE 10/16/02

**A-C MOTOR PERFORMANCE CURVES**  
 A36WG0319-R001  
 ISSUE DATE 04/14/21

REL. S.O. \_\_\_\_\_ RPM **3555** S.F. **1.15** ROTOR **418141005TE**  
 FRAME **365TC** VOLTS **230/460** NEMA DESIGN **B** TEST S.O. **TYPICAL DATA**  
 HP **75** AMPS **161/80.7** CODE LETTER **G** TEST DATE **---**  
 TYPE **P** DUTY **CONT** ENCLOSURE **TEFC** SPATOR RES @ 25 °C. **0186/.0744**  
 PHASE/HERTZ **3/60** AMB °C/INSUL **40/F** E/S **892019** OMS (BETWEEN LINES)



REMARKS: THERMAL LIMIT CURVE  
 XE MOTOR-NEMA NOM. EFF. 94.5 %  
 GUARANTEED MIN. EFF. 93.6%

AMPERES SHOWN FOR 460 VOLT CONNECTION, IF OTHER VOLTAGE CONNECTIONS ARE AVAILABLE, THE AMPERES WILL VARY INVERSELY WITH THE RATED VOLTAGE.

**BALDOR** A MEMBER OF THE ABB GROUP

DR. BY	J. HARRISON
CK. BY	G. R. WEBB
APP. BY	W. L. SMITH
DATE	10/16/02

**A-C MOTOR PERFORMANCE CURVES** A36WG0319-R001  
 ISSUE DATE 04/14/21

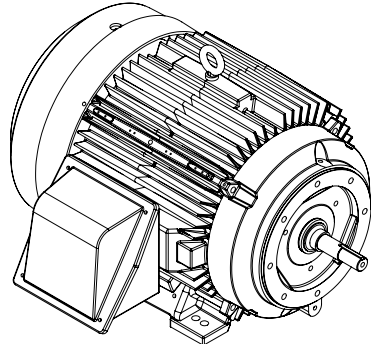
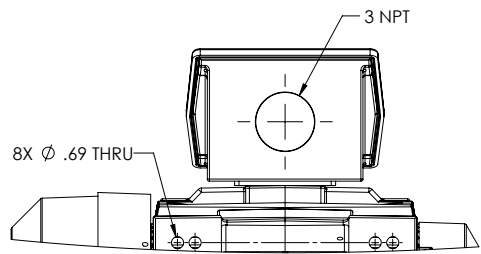
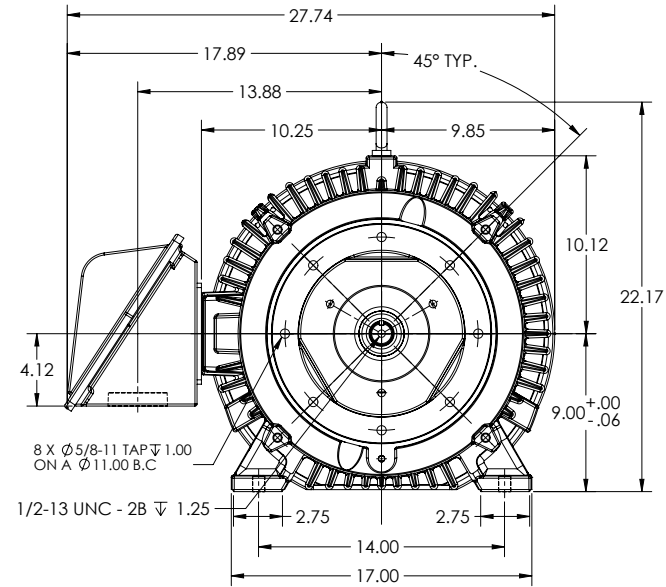
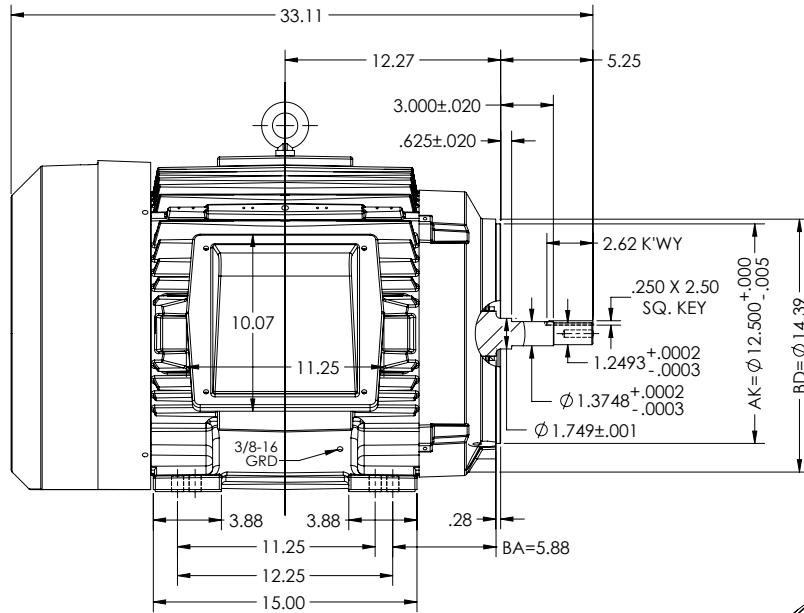
617436-346

### DUTY MASTER ALTERNATING CURRENT MOTORS SQUIRREL-CAGE INDUCTION

ENCLOSURE: TOTALLY ENCLOSED  
MOUNTING: FOOT, C-FACE, F-1 SIDE

FRAME 365TCZ  
INCLUDES 364TCZ FRAME MOUNTING HOLES  
326JM D.E. SHAFT EXT. PER 14LYP021

COOLING: FAN COOLED  
ENCLOSURE ENHANCEMENT: SEVERE DUTY



FACE RUNOUT & ECCENTRICITY .007 MAX T.I.R  
IF MOUNTING CLEARANCE DETAILS ARE REQUIRED, CONSULT FACTORY.  
MAXIMUM PERMISSIBLE SHAFT RUNOUT WHEN MEASURED AT END OF  
STANDARD SHAFT EXTENSION IS .003" T.I.R.

DIMENSIONS ARE IN INCHES  
CUSTOMER IS RESPONSIBLE FOR DETERMINING THAT MOTOR PERFORMANCE IS SUITABLE IN THE APPLICATION.

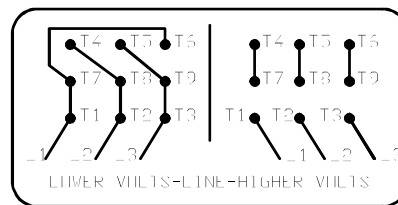
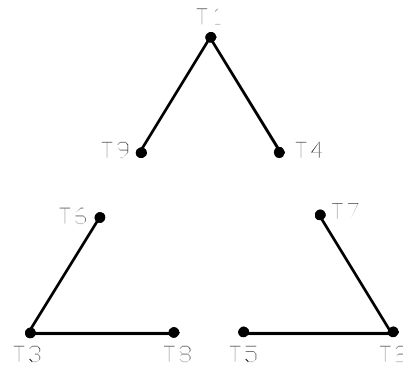
REV. DESC: NEW LAYOUT	VERSION: 00	REVISED: 09-14-39 09:30:2019	TDR: 000001121139
MODEL NO. 617436-346			
BY: USTREE			

**BALDOR**

E365TCZ TEFC FT - F1 - SHAFT 326JM PER 14LYP021

416820-002

A-C MOTOR  
 CONNECTION DIAGRAM  
 STANDARD 9 LEAD DELTA-CONNECTED



(N.P. 1575-B)

416820-002

REV. DESC: FONT CHANGE FOR PDF SEARCHABLE		
REV. LTR: A	VERSION: 01	TDR: 000001009382
FILE: \MGA\00000\661	REVISED: 02:46:19 02/13/2020	BY: MGHMTT
MTL: -		© □

**BALDOR - RELIANCE®**

CONN DIAG - STANDARD 9 LEAD, DELTA-CONNECTED

SH 1 of 1