

BALDOR • RELIANCE

Customer information packet

JMEWDM4104T

30HP, 1770RPM, 3PH, 60HZ, 286JM, TEFC, F1

Class - None

Division - Not Applicable

Copyright © All product information within this document is subject to ABB Motors and Mechanical Inc. copyright © protection, unless otherwise noted.

8/15/2024 12:34:56 AM

Specifications

Enclosure	TEFC
Frame	286JM
Frame Material	Iron
Frequency	60.00 Hz
Haz Area Class and Group	None
Haz Area Division	Not Applicable
Motor Letter Type	Three Phase
Output @ Frequency	30.000 HP @ 60 HZ
Phase	3
Synchronous Speed @ Frequency	1800 RPM @ 60 HZ
Voltage @ Frequency	230.0 V @ 60 HZ 460.0 V @ 60 HZ
Agency Approvals	CSA CSA EEV NEMA PREMIUM UR
Ambient Temperature	40 °C
Auxillary Box	No Auxillary Box
Auxillary Box Lead Termination	None
Base Indicator	Rigid
Bearing Grease Type	Polyrex EM (-20F +300F)
Blower	None
Current @ Voltage	72.000 A @ 230.0 V 36.000 A @ 460.0 V
Design Code	B
Drip Cover	No Drip Cover
Duty Rating	CONT
Efficiency @ 100% Load	93.6 %
Electrically Isolated Bearing	Not Electrically Isolated
Feedback Device	NO FEEDBACK
Heater Indicator	No Heater
High Voltage Full Load Amps	36.0 a

Part detail

Revision	E
Type	AC
Mech. spec.	
Base	
Status	PRD/A
Elec. spec.	10WGZ506
Layout	10LY-000-754
Eff. date	02-14-2024
CD Diagram	CD0005
Poles	04
Leads	9#10
Proprietary	False
Created date	01-16-2020

Insulation Class	F
Inverter Code	Inverter Duty
IP Rating	NONE
KVA Code	G
Lifting Lugs	Standard Lifting Lugs
Locked Bearing Indicator	Locked Bearing
Motor Lead Termination	Flying Leads
Motor Standards	NEMA
Motor Type	1060M
Mounting Arrangement	F1
Number of Poles	4
Overall Length	28.44 IN
Power Factor	84
Product Family	Washdown Features
Pulley Face Code	C-Face
Rodent Screen	None
Service Factor	1.00
Shaft Diameter	1.250 IN
Shaft Ground Indicator	No Shaft Grounding
Shaft Rotation	Reversible
Speed	1770 rpm
Speed Code	Single Speed
Starting Method	Direct on line
Thermal Device - Bearing	None
Thermal Device - Winding	None
Vibration Sensor Indicator	No Vibration Sensor
Winding Thermal 1	None
Winding Thermal 2	None

Nameplate

NP1669L									
CAT.NO.	JMEWDM4104T								
SPEC.	10-0000-1311								
HP	30								
VOLTS	230/460								
AMP	72/36								
RPM	1770								
FRAME	286JM		HZ	60		PH	3		
SER.F.	1.00	CODE	G	DES	B	CLASS	F		
NEMA-NOM-EFF	93.6	PF	84						
RATING	40C AMB-CONT								
CC	010A								
DE	6312		ODE	6309					
ENCL	TEFC	SN							
BLANK	20:1CT,VT,1.00SF								

AC Induction Motor Performance Data

Record # 74724

Typical performance - not guaranteed values

Winding: 10WGZ506-R010		Type: 1060M	Enclosure: TEFC	
Nameplate Data			460 V, 60 Hz: High Voltage Connection	
Rated Output (HP)	30	Full Load Torque	88.64 LB-FT	
Volts	230/460	Start Configuration	direct on line	
Full Load Amps	72/36	Breakdown Torque	267 LB-FT	
R.P.M.	1770	Pull-up Torque	116 LB-FT	
Hz	60 Phase	Locked-rotor Torque	142 LB-FT	
NEMA Design Code	B KVA Code	Starting Current	215 A	
Service Factor (S.F.)	1	No-load Current	13.5 A	
NEMA Nom. Eff.	93.6 Power Factor	Line-line Res. @ 25°C	0.234 Ω	
Rating - Duty	40C AMB-CONT	Temp. Rise @ Rated Load	62°C	
S.F. Amps		Temp. Rise @ S.F. Load	77°C	
		Locked-rotor Power Factor	29.7	
		Rotor inertia	4.77 LB-FT ²	

Load Characteristics 460 V, 60 Hz, 30 HP

% of Rated Load	25	50	75	100	125	150
Power Factor	48	71	80	84	85	85
Efficiency	91	93.9	94.3	93.9	93.6	91.9
Speed	1793	1787	1779	1772	1764	1753
Line amperes	15.8	21.1	27.8	35.6	44	53.5

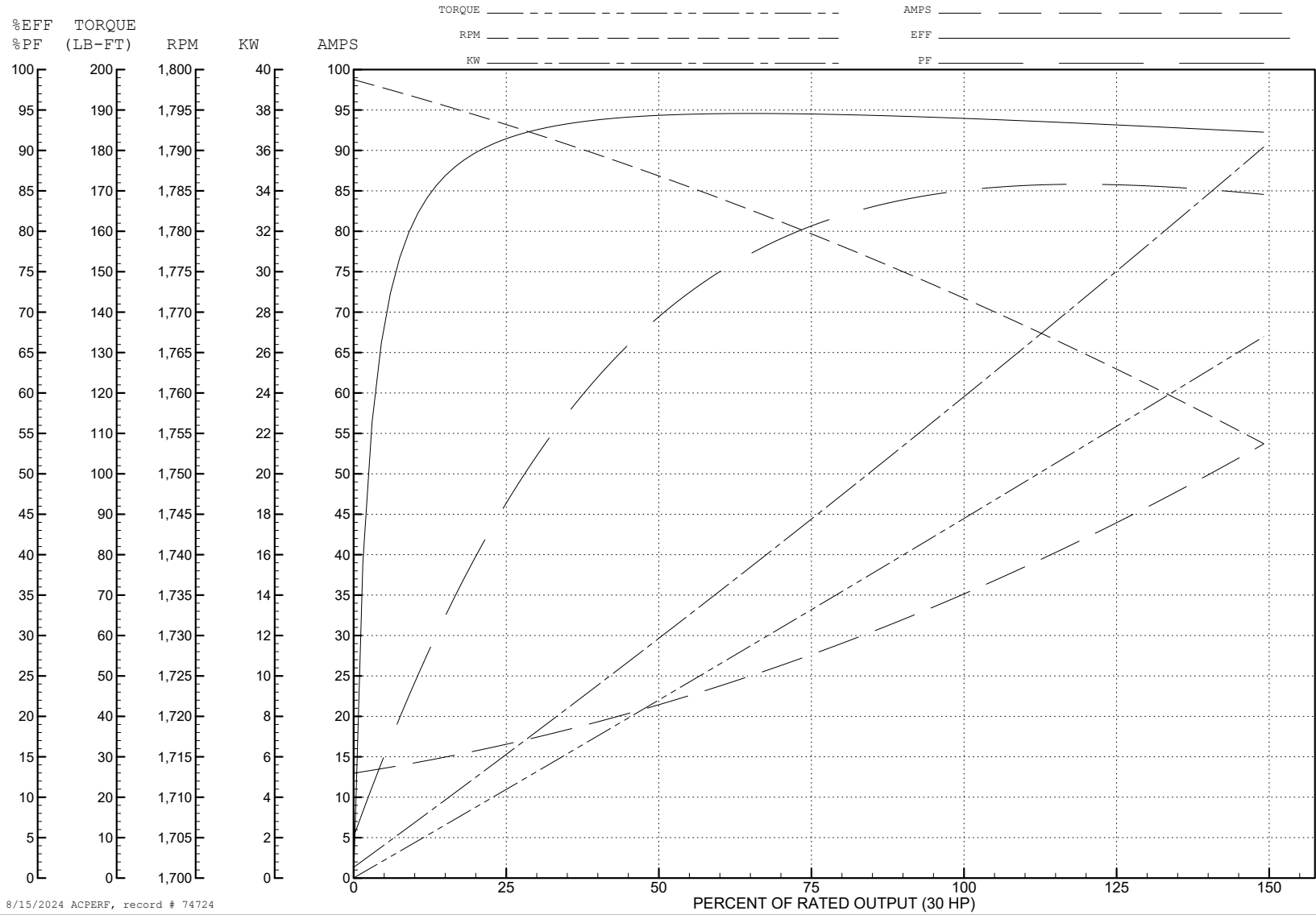
ABB Motors and Mechanical Inc.

WINDING # 10WGZ506

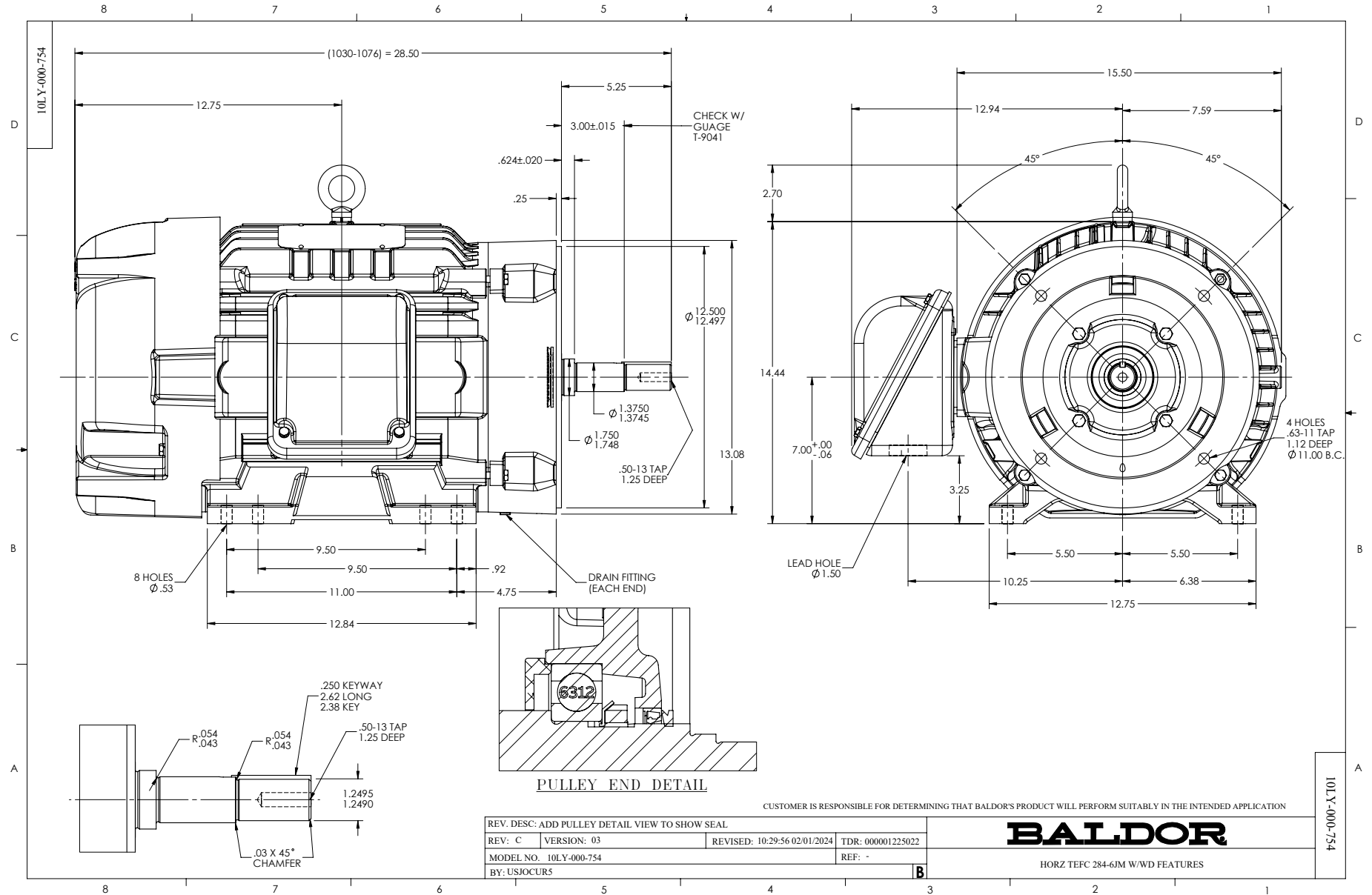
Typical performance - not guaranteed values.

30 HP 3 PH 60 HZ 1770 RPM 460 V 1060M

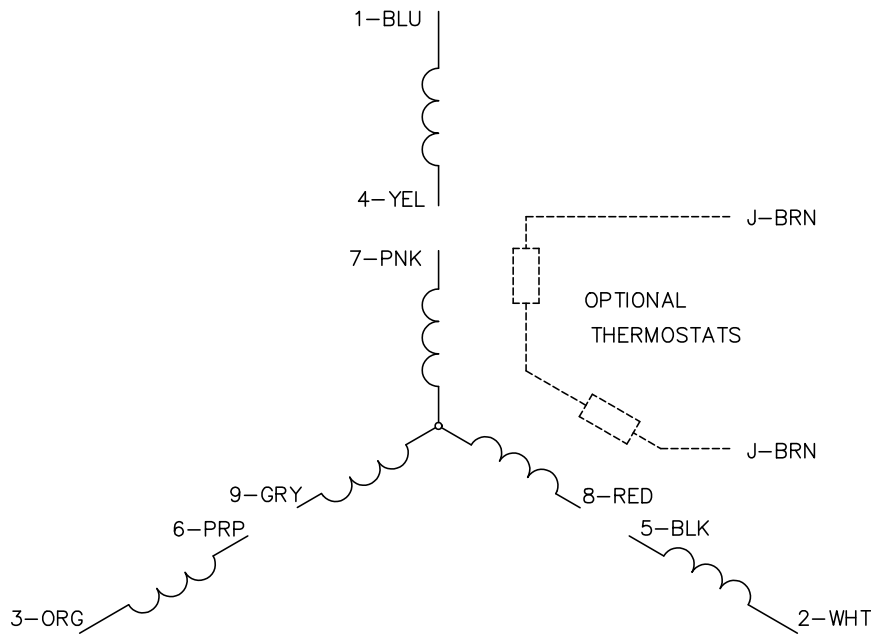
TORQUES (LB-FT): PO=267 PU=116 LR=142 LRA=215



8/15/2024 ACPERF, record # 74724



CD0005



LOW VOLTAGE
(2Y)



LINE

HIGH VOLTAGE
(1Y)



LINE

NOTES:

1. INTERCHANGE ANY TWO LINE LEADS TO REVERSE ROTATION.
2. OPTIONAL THERMOSTATS ARE PROVIDED WHEN SPECIFIED.
3. ACTUAL NUMBER OF INTERNAL PARALLEL CIRCUITS MAY BE A MULTIPLE OF THOSE SHOWN ABOVE.
4. LEAD COLORS ARE OPTIONAL. LEADS MUST ALWAYS BE NUMBERED AS SHOWN.

CD0005

REV. DESC: REVISE TO SHOW OPTIONAL COLORS			
REV. LTR: E	BY: JLP	REVISED: 01/19/99 10:15	TDR: 0171435
S00000		FILE: AAA00005140	MDL: -
		MTL: -	

BALDOR ELECTRIC Co.

3PH, DV, 9 LEADS