



Customer information packet

JMEWDM3714T

10HP, 1770RPM, 3PH, 60HZ, 215JM, 3752M, TEFC, F

Class - None

Division - Not Applicable

Specifications

Enclosure	TEFC
Frame	215JM
Frame Material	Steel
Frequency	60.00 Hz
Haz Area Class and Group	None
Haz Area Division	Not Applicable
Motor Letter Type	Three Phase
Output @ Frequency	10.000 HP @ 60 HZ
Phase	3
Synchronous Speed @ Frequency	1800 RPM @ 60 HZ
Voltage @ Frequency	230.0 V @ 60 HZ 460.0 V @ 60 HZ
Agency Approvals	CSA CSA EEV NEMA PREMIUM UR
Ambient Temperature	40 °C
Auxillary Box	No Auxillary Box
Auxillary Box Lead Termination	None
Base Indicator	Rigid
Bearing Grease Type	Polyrex EM (-20F +300F)
Blower	None
Current @ Voltage	27.000 A @ 208.0 V 25.000 A @ 230.0 V 12.500 A @ 460.0 V
Design Code	A
Drip Cover	No Drip Cover
Duty Rating	CONT
Efficiency @ 100% Load	91.7 %
Electrically Isolated Bearing	Not Electrically Isolated
Feedback Device	NO FEEDBACK
Front Shaft Indicator	None

Part detail

Revision	A
Type	AC
Mech. spec.	37H883
Base	
Status	PRD/A
Elec. spec.	37WGL865
Layout	37LYH883
Eff. date	02-14-2024
CD Diagram	CD0005
Poles	04
Leads	9#14
Proprietary	False
Created date	01-29-2021

Heater Indicator	No Heater
High Voltage Full Load Amps	12.5 a
Insulation Class	F
Inverter Code	Inverter Ready
KVA Code	K
Lifting Lugs	Standard Lifting Lugs
Locked Bearing Indicator	Locked Bearing
Motor Lead Quantity/Wire Size	9 @ 14 AWG
Motor Lead Termination	Flying Leads
Motor Standards	NEMA
Motor Type	3752M
Mounting Arrangement	F1
Number of Poles	4
Overall Length	22.41 IN
Power Factor	85
Product Family	Wash Down
Pulley End Bearing Type	Sealed Bearing
Pulley Face Code	C-Face
Pulley Shaft Indicator	Tapped & Key
Rodent Screen	None
Service Factor	1.15
Shaft Diameter	0.875 IN
Shaft Ground Indicator	No Shaft Grounding
Shaft Rotation	Reversible
Shaft Slinger Indicator	Shaft Slinger
Speed	1770 rpm
Speed Code	Single Speed
Starting Method	Direct on line
Thermal Device - Bearing	None
Thermal Device - Winding	None
Vibration Sensor Indicator	No Vibration Sensor
Winding Thermal 1	None
Winding Thermal 2	None

Nameplate

NP1669L									
CAT.NO.	JMEWDM3714T								
SPEC.	37H883L865G1								
HP	10								
VOLTS	230/460								
AMP	25/12.5								
RPM	1770								
FRAME	215JM		HZ	60		PH	3		
SER.F.	1.15	CODE	K	DES	A	CLASS	F		
NEMA-NOM-EFF	91.7	PF	85						
RATING	40C AMB-CONT								
CC	010A								
DE	6309		ODE	6206					
ENCL	TEFC	SN							
BLANK	20:1CT, 20:1VT, 1.00SF								

AC Induction Motor Performance Data

Record # 85459

Preliminary Data Sheet

Winding: 37WGL865-R001		Type: 3752M		Enclosure: TEFC	
Nameplate Data			460 V, 60 Hz: High Voltage Connection		
Rated Output (HP)	10	Full Load Torque	29.7 LB-FT		
Volts	230/460	Start Configuration	direct on line		
Full Load Amps	25/12.5	Breakdown Torque	102 LB-FT		
R.P.M.	1770	Pull-up Torque	46.9 LB-FT		
Hz	60 Phase	3	Locked-rotor Torque	62.2 LB-FT	
NEMA Design Code	A KVA Code	K	Starting Current	101 A	
Service Factor (S.F.)	1.15	No-load Current	5.33 A		
NEMA Nom. Eff.	91.7 Power Factor	85	Line-line Res. @ 25°C	0.957 Ω	
Rating - Duty	40C AMB-CONT	Temp. Rise @ Rated Load	69°C		
S.F. Amps		Temp. Rise @ S.F. Load	86°C		
		Locked-rotor Power Factor	35.8		
		Rotor inertia	1.28 LB-FT ²		

Load Characteristics 460 V, 60 Hz, 10 HP

% of Rated Load	25	50	75	100	125	150	S.F.
Power Factor	44	66	77	81	84	85	84
Efficiency	88.4	91.8	92.4	92.1	91	89.9	91.4
Speed	1793	1786	1778	1770	1761	1751	1762
Line amperes	6.05	7.73	9.9	12.5	15.3	18.3	14.1

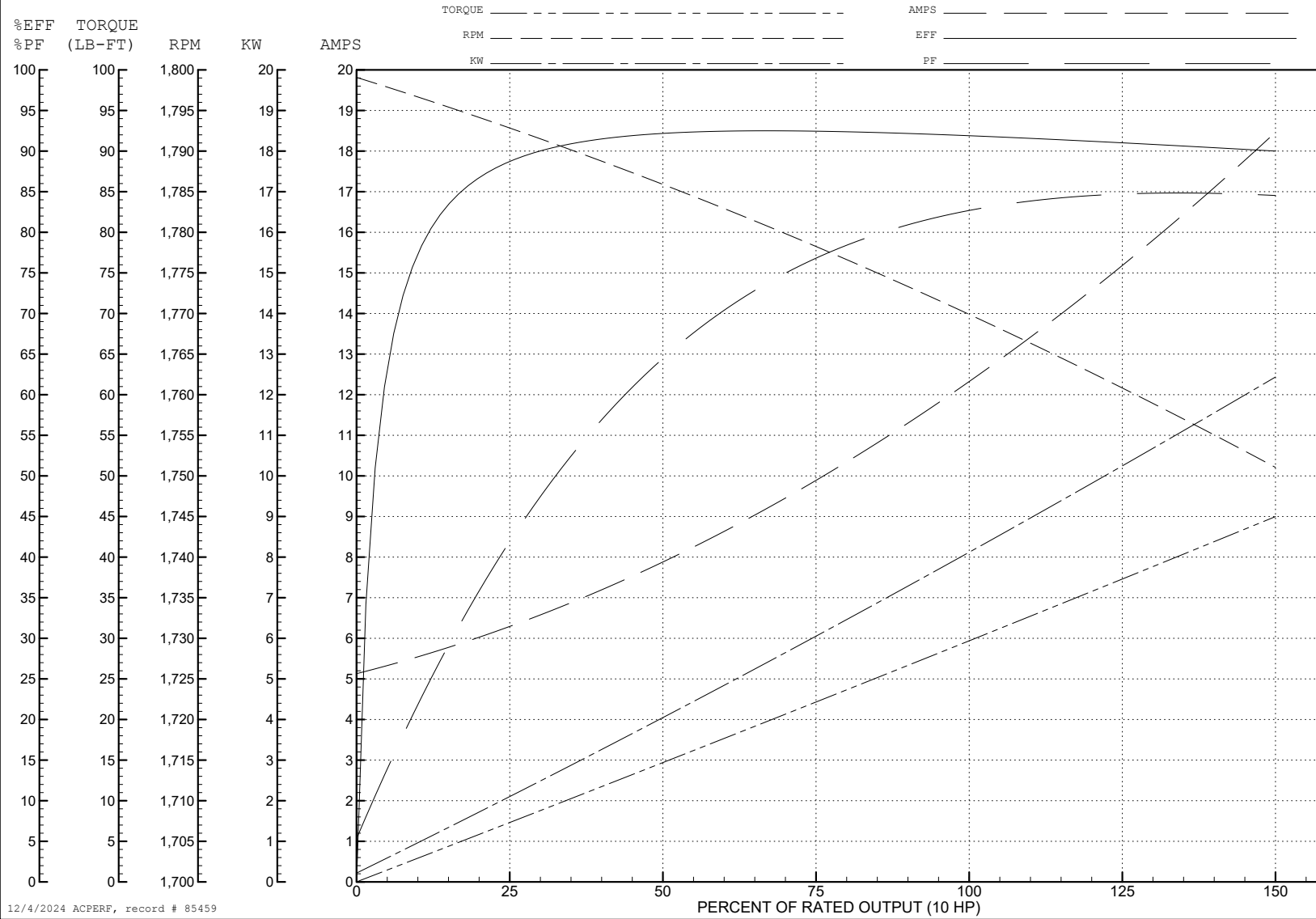
ABB Motors and Mechanical Inc.

WINDING # 37WGL865

Typical performance - not guaranteed values.

10 HP 3 PH 60 HZ 1770 RPM 460 V 3752M

TORQUES (LB-FT): PO=102 PU=46.9 LR=62.2 LRA=101



12/4/2024 ACPERF, record # 85459

AC Induction Motor Performance Data

Record # 103095

Typical performance - not guaranteed values

Winding: 37WGL865-R001		Type: 3752M		Enclosure: TEFC	
Nameplate Data			415 V, 60 Hz: High Voltage Connection		
Rated Output (HP)	10	Full Load Torque	29.83 LB-FT		
Volts	230/460	Start Configuration	direct on line		
Full Load Amps	25/12.5	Breakdown Torque	82.4 LB-FT		
R.P.M.	1770	Pull-up Torque	37.5 LB-FT		
Hz	60 Phase	3	Locked-rotor Torque	49.7 LB-FT	
NEMA Design Code	A	KVA Code	K	Starting Current	90.2 A
Service Factor (S.F.)	1.15	No-load Current	4.58 A		
NEMA Nom. Eff.	91.7	Power Factor	85	Line-line Res. @ 25°C	0.957 Ω
Rating - Duty	40C AMB-CONT		Temp. Rise @ Rated Load	73°C	
S.F. Amps			Temp. Rise @ S.F. Load	93°C	
			Locked-rotor Power Factor	35.8	
			Rotor inertia	1.28 lb-ft ²	

Load Characteristics 415 V, 60 Hz, 10 HP

% of Rated Load	25	50	75	100	125	150	S.F.
Power Factor	52	73	81	84	86	86	85
Efficiency	89.7	92.3	92.4	91.8	90.2	88.7	90.8
Speed	1792	1783	1774	1764	1753	1740	1757
Line amperes	5.53	7.67	10.3	13.41	16.72	20.39	15.4

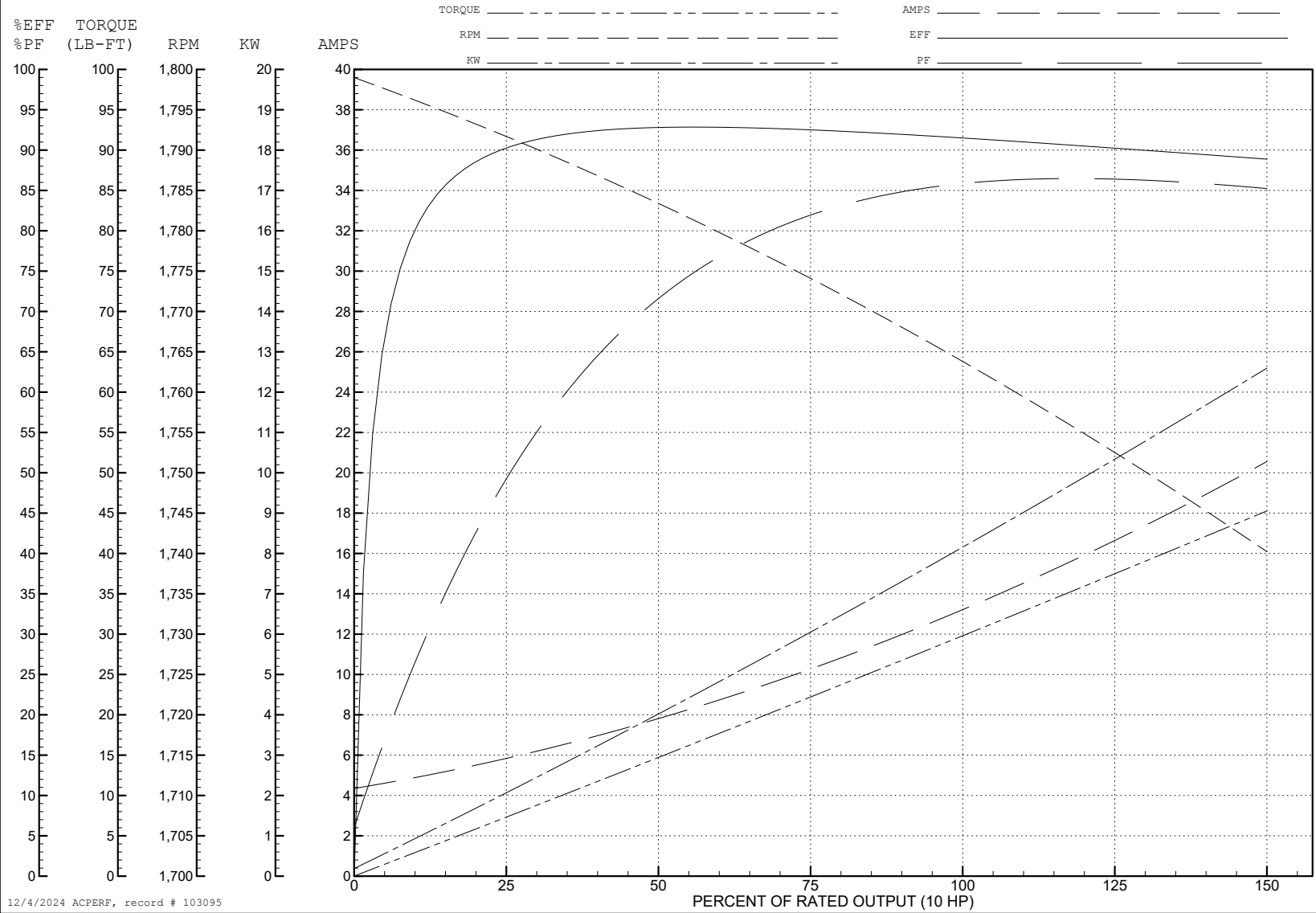
ABB Motors and Mechanical Inc.

WINDING # 37WGL865

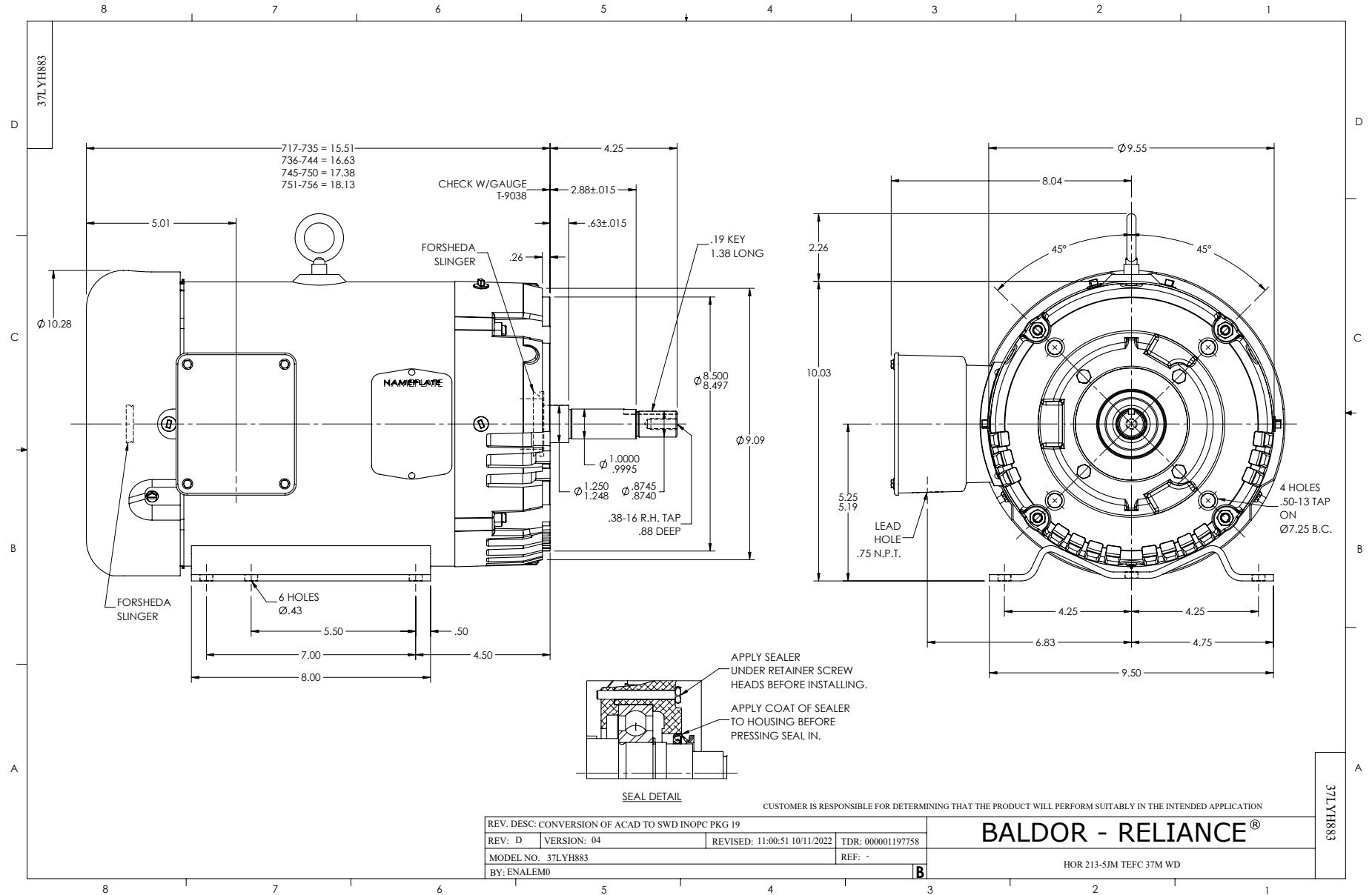
Typical performance - not guaranteed values.

10 HP 3 PH 60 HZ 1770 RPM 415 V 3752M

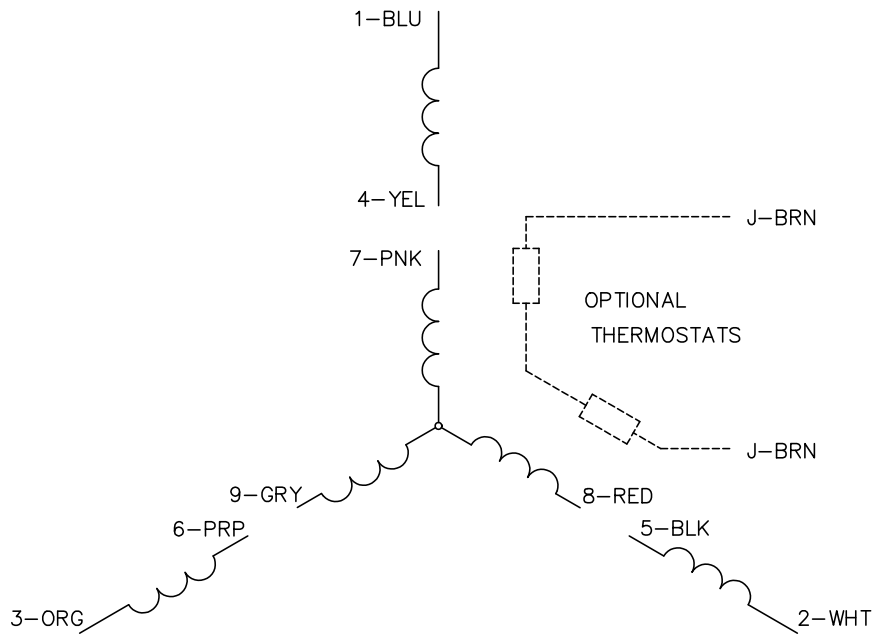
TORQUES (LB-FT): PO=82.4 PU=37.5 LR=49.7 LRA=90.2



12/4/2024 ACPERF, record # 103095



CD0005

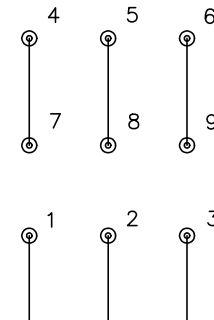


LOW VOLTAGE
(2Y)



LINE

HIGH VOLTAGE
(1Y)



LINE

NOTES:

1. INTERCHANGE ANY TWO LINE LEADS TO REVERSE ROTATION.
2. OPTIONAL THERMOSTATS ARE PROVIDED WHEN SPECIFIED.
3. ACTUAL NUMBER OF INTERNAL PARALLEL CIRCUITS MAY BE A MULTIPLE OF THOSE SHOWN ABOVE.
4. LEAD COLORS ARE OPTIONAL. LEADS MUST ALWAYS BE NUMBERED AS SHOWN.

CD0005

REV. DESC: REVISE TO SHOW OPTIONAL COLORS			
REV. LTR: E	BY: JLP	REVISED: 01/19/99 10:15	TDR: 0171435
S00000		FILE: AAA00005140	MDL: -
		MTL: -	

BALDOR ELECTRIC Co.

3PH, DV, 9 LEADS