

BALDOR • RELIANCE

Customer information packet

JMEWDM3616T

7.5HP, 3450RPM, 3PH, 60HZ, 184JM, 3646M, TEFC

Class - None

Division - Not Applicable

Specifications

Enclosure	TEFC
Frame	184JM
Frame Material	Steel
Frequency	60.00 Hz
Motor Letter Type	Three Phase
Output @ Frequency	7.500 HP @ 60 HZ
Phase	3
Synchronous Speed @ Frequency	3600 RPM @ 60 HZ
Voltage @ Frequency	460.0 V @ 60 HZ 230.0 V @ 60 HZ
XP Class and Group	None
XP Division	Not Applicable
Agency Approvals	CSA CSA EEV UR
Ambient Temperature	40 °C
Auxillary Box	No Auxillary Box
Auxillary Box Lead Termination	None
Base Indicator	Rigid
Bearing Grease Type	Polyrex EM (-20F +300F)
Blower	None
Current @ Voltage	18.500 A @ 208.0 V 8.400 A @ 460.0 V 16.800 A @ 230.0 V
Design Code	A
Drip Cover	No Drip Cover
Duty Rating	CONT
Efficiency @ 100% Load	89.5 %
Electrically Isolated Bearing	Not Electrically Isolated
Feedback Device	NO FEEDBACK
Front Face Code	Standard
Front Shaft Indicator	None

Part detail

Revision	H
Type	AC
Mech. spec.	36K605
Base	
Status	PRD/A
Elec. spec.	36WGS428
Layout	36LYK605
Eff. date	02-14-2024
CD Diagram	CD0005
Poles	02
Leads	9#16
Proprietary	False
Created date	12-04-2014

Heater Indicator	No Heater
High Voltage Full Load Amps	8.4 a
Insulation Class	F
Inverter Code	Inverter Ready
KVA Code	L
Lifting Lugs	No Lifting Lugs
Locked Bearing Indicator	Locked Bearing
Motor Lead Exit	Ko Box
Motor Lead Quantity/Wire Size	9 @ 16 AWG
Motor Lead Termination	Flying Leads
Motor Standards	NEMA
Motor Type	3646M
Mounting Arrangement	F1
Number of Poles	2
Overall Length	19.55 IN
Power Factor	93
Product Family	Wash Down
Pulley End Bearing Type	Ball
Pulley Face Code	C-Face
Pulley Shaft Indicator	Tapped & Key
Rodent Screen	None
Service Factor	1.15
Shaft Diameter	0.875 IN
Shaft Extension Location	Pulley End
Shaft Ground Indicator	No Shaft Grounding
Shaft Rotation	Reversible
Shaft Slinger Indicator	Shaft Slinger
Speed	3450 rpm
Speed Code	Single Speed
Starting Method	Direct on line
Thermal Device - Bearing	None
Thermal Device - Winding	None
Vibration Sensor Indicator	No Vibration Sensor
Winding Thermal 1	None

Winding Thermal 2

None

Nameplate

NP1669L									
CAT.NO.	JMEWDM3616T								
SPEC.	36K605S428G2								
HP	7.5								
VOLTS	230/460								
AMP	16.8/8.4								
RPM	3450								
FRAME	184JM		HZ	60		PH	3		
SER.F.	1.15	CODE	L	DES	A	CLASS	F		
NEMA-NOM-EFF	89.5	PF	93						
RATING	40C AMB-CONT								
CC	010A								
DE	6207		ODE	6205					
ENCL	TEFC	SN							
BLANK	10:1CT, 20:1VT, 1.00SF								

AC Induction Motor Performance Data

Record # 52145

Typical performance - not guaranteed values

Winding: 36WGS428-R020		Type: 3646M		Enclosure: TEFC	
Nameplate Data			460 V, 60 Hz: High Voltage Connection		
Rated Output (HP)	7.5		Full Load Torque	11.4 LB-FT	
Volts	230/460		Start Configuration	direct on line	
Full Load Amps	16.8/8.4		Breakdown Torque	57.9 LB-FT	
R.P.M.	3450		Pull-up Torque	39.9 LB-FT	
Hz	60 Phase	3	Locked-rotor Torque	48.2 LB-FT	
NEMA Design Code	A KVA Code	L	Starting Current	91 A	
Service Factor (S.F.)	1.15		No-load Current	2.33 A	
NEMA Nom. Eff.	89.5 Power Factor	93	Line-line Res. @ 25°C	1.43 Ω	
Rating - Duty	40C AMB-CONT		Temp. Rise @ Rated Load	74°C	
S.F. Amps			Temp. Rise @ S.F. Load	92°C	
			Locked-rotor Power Factor	44.4	
			Rotor inertia	0.205 LB-FT ²	

Load Characteristics 460 V, 60 Hz, 7.5 HP

% of Rated Load	25	50	75	100	125	150	S.F.
Power Factor	64	85	90	93	94	94	94
Efficiency	86.9	90.6	91	90.1	88.8	86.5	89.3
Speed	3571	3539	3505	3468	3429	3385	3445
Line amperes	3.14	4.59	6.43	8.43	10.5	12.9	9.67

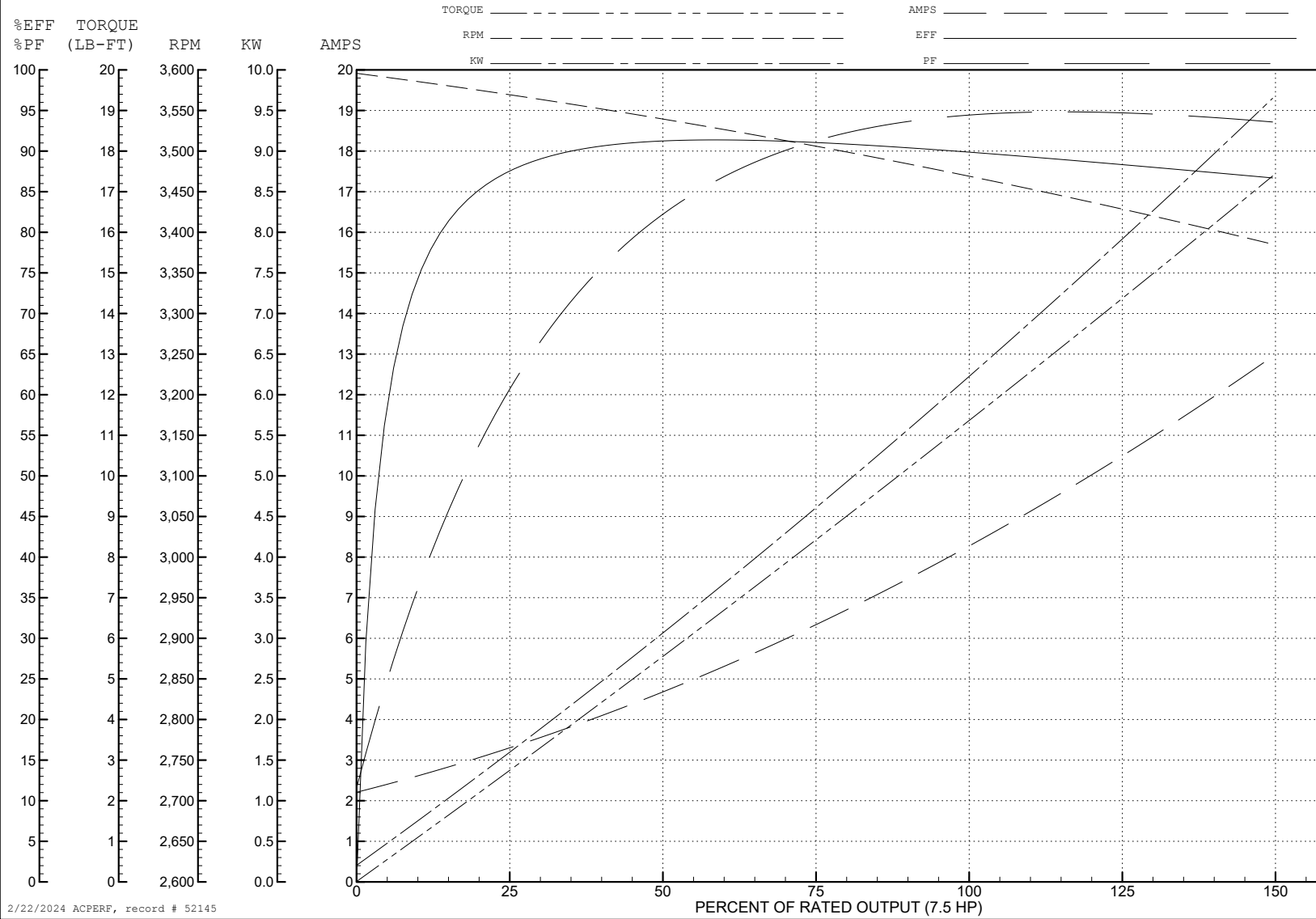
ABB Motors and Mechanical Inc.

WINDING # 36WGS428

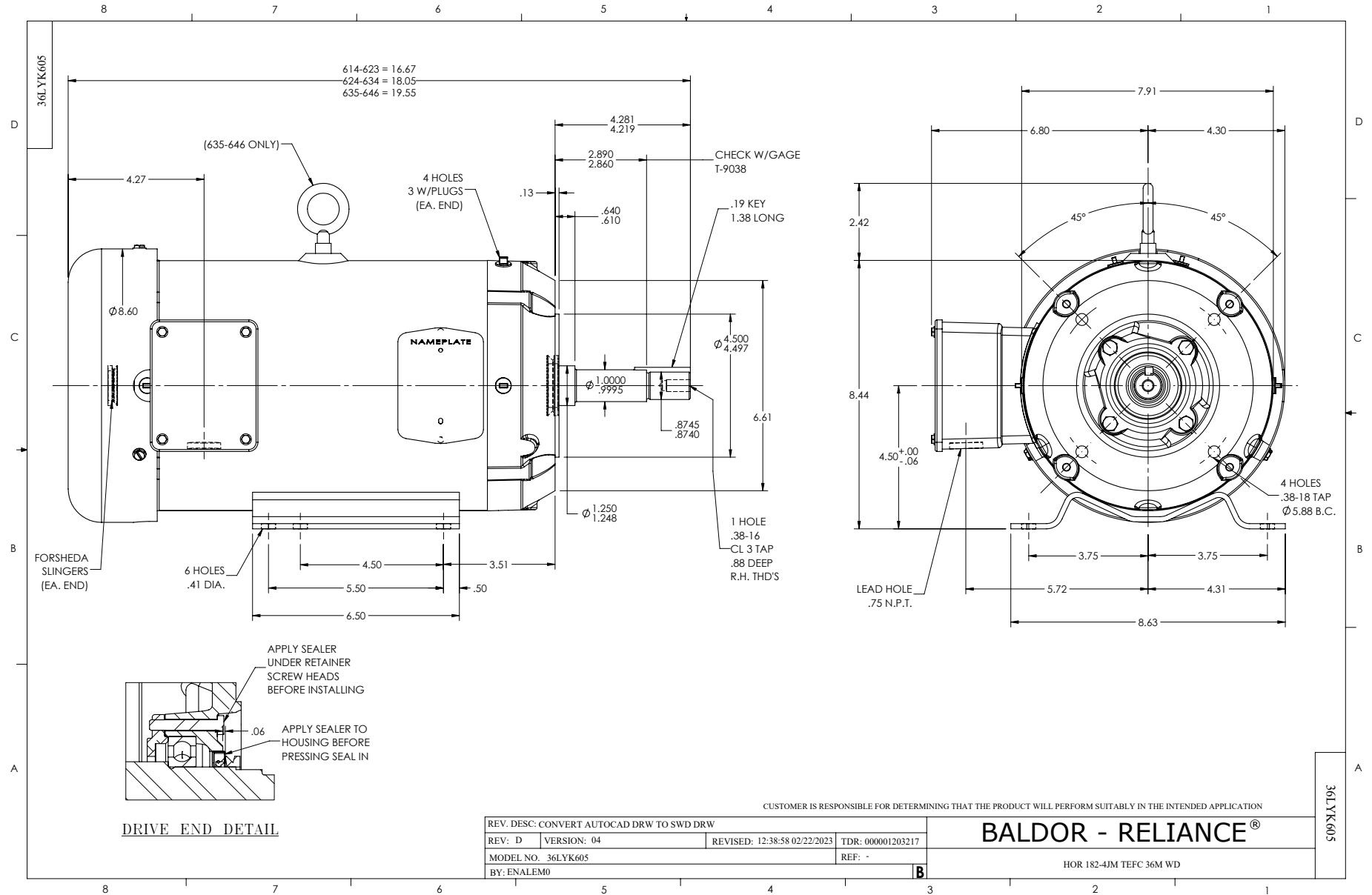
7.5 HP 3 PH 60 HZ 3450 RPM 460 V 3646M

Typical performance - not guaranteed values.

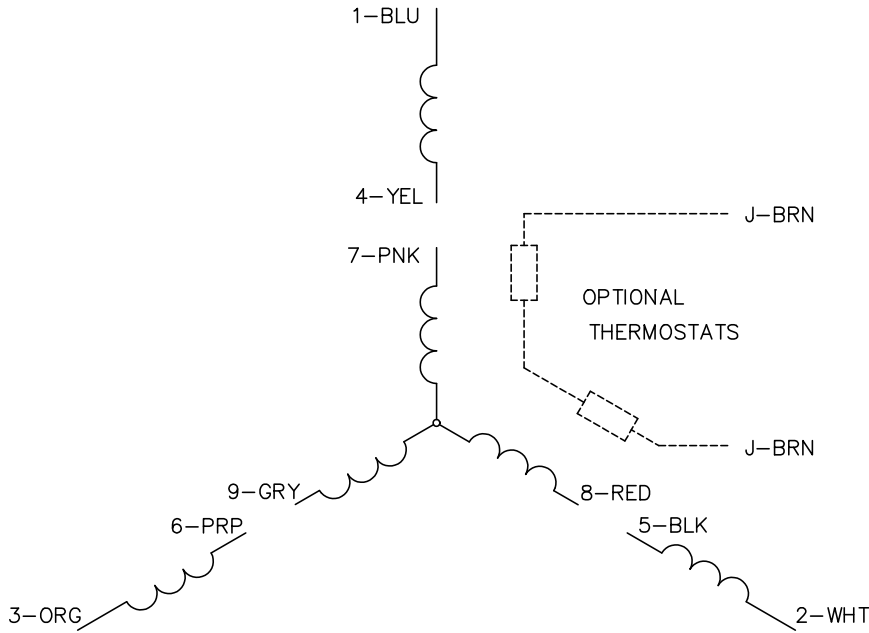
TORQUES (LB-FT): PO=57.9 PU=39.9 LR=48.2 LRA=91



2/22/2024 ACPERF, record # 52145



CD0005



LOW VOLTAGE
(2Y)



LINE

HIGH VOLTAGE
(1Y)



LINE

NOTES:

1. INTERCHANGE ANY TWO LINE LEADS TO REVERSE ROTATION.
2. OPTIONAL THERMOSTATS ARE PROVIDED WHEN SPECIFIED.
3. ACTUAL NUMBER OF INTERNAL PARALLEL CIRCUITS MAY BE A MULTIPLE OF THOSE SHOWN ABOVE.
4. LEAD COLORS ARE OPTIONAL. LEADS MUST ALWAYS BE NUMBERED AS SHOWN.

CD0005

REV. DESC: REVISE TO SHOW OPTIONAL COLORS			
REV. LTR: E	BY: JLP	REVISED: 01/19/99 10:15	TDR: 0171435
S00000		FILE: AAA00005140	MDL: -
		MTL: -	

BALDOR ELECTRIC Co.

3PH, DV, 9 LEADS