

ABB BALDOR RELIANCE III

Customer information packet

JMEWDM3613T

5HP, 3430RPM, 3PH, 60HZ, 184JM, 3634M, TEFC, F1

Class - None

Division - Not Applicable

Specifications

Enclosure	TEFC
Frame	184JM
Frame Material	Steel
Frequency	60.00 Hz
Haz Area Class and Group	None
Haz Area Division	Not Applicable
Motor Letter Type	Three Phase
Output @ Frequency	5.000 HP @ 60 HZ
Phase	3
Synchronous Speed @ Frequency	3600 RPM @ 60 HZ
Voltage @ Frequency	460.0 V @ 60 HZ 230.0 V @ 60 HZ
Agency Approvals	CSA CSA EEV UR
Ambient Temperature	40 °C
Auxiliary Box	NO AUXILLARY BOX
Auxiliary Box Lead Termination	None
Base Indicator	Rigid
Bearing Grease Type	Polyrex EM (-20F +300F)
Blower	None
Current @ Voltage	12.400 A @ 208.0 V 5.600 A @ 460.0 V 11.200 A @ 230.0 V
Design Code	B
Drip Cover	No Drip Cover
Duty Rating	CONT
Efficiency @ 100% Load	88.5 %
Electrically Isolated Bearing	Not Electrically Isolated
Feedback Device	NO FEEDBACK
Front Face Code	Standard
Front Shaft Indicator	None

Part Detail

Revision	J
Type	AC
Mech. spec.	36K605
Base	
Status	PRD/A
Elec. spec.	36WGR114
Layout	36LYK605
Eff. date	06-10-2025
CD Diagram	CD0005
Poles	02
Leads	9#16
Proprietary	False
Created date	12-04-2014

Heater Indicator	No Heater
High Voltage Full Load Amps	5.6 a
Insulation Class	F
Inverter Code	Inverter Ready
KVA Code	J
Lifting Lugs	No Lifting Lugs
Locked Bearing Indicator	Locked Bearing
Motor Lead Exit	Ko Box
Motor Lead Quantity/Wire Size	9 @ 16 AWG
Motor Lead Termination	Flying Leads
Motor Standards	NEMA
Motor Type	3634M
Mounting Arrangement	F1
Number of Poles	2
Overall Length	18.05 IN
Power Factor	94
Product Family	Wash Down
Pulley End Bearing Type	Ball
Pulley Face Code	C-Face
Pulley Shaft Indicator	Tapped & Key
Rodent Screen	None
Service Factor	1.15
Shaft Diameter	0.875 IN
Shaft Extension Location	Pulley End
Shaft Ground Indicator	No Shaft Grounding
Shaft Rotation	Reversible
Shaft Slinger Indicator	Shaft Slinger
Speed	3430 rpm
Speed Code	Single Speed
Starting Method	Direct on line
Thermal Device - Bearing	None
Thermal Device - Winding	None
Vibration Sensor Indicator	No Vibration Sensor
Winding Thermal 1	None

Winding Thermal 2

None

Nameplate

NP1669L									
CAT.NO.	JMEWDM3613T								
SPEC.	36K605R114G1								
HP	5								
VOLTS	230/460								
AMP	11.2/5.6								
RPM	3430								
FRAME	184JM	HZ	60		PH	3			
SER.F.	1.15	CODE	J	DES	B	CLASS	F		
NEMA-NOM-EFF	88.5	PF	94						
RATING	40C AMB-CONT								
CC	010A								
DE	6207	ODE	6205						
ENCL	TEFC	SN							
BLANK	20:1CT, 20:1VT, 1.00SF								

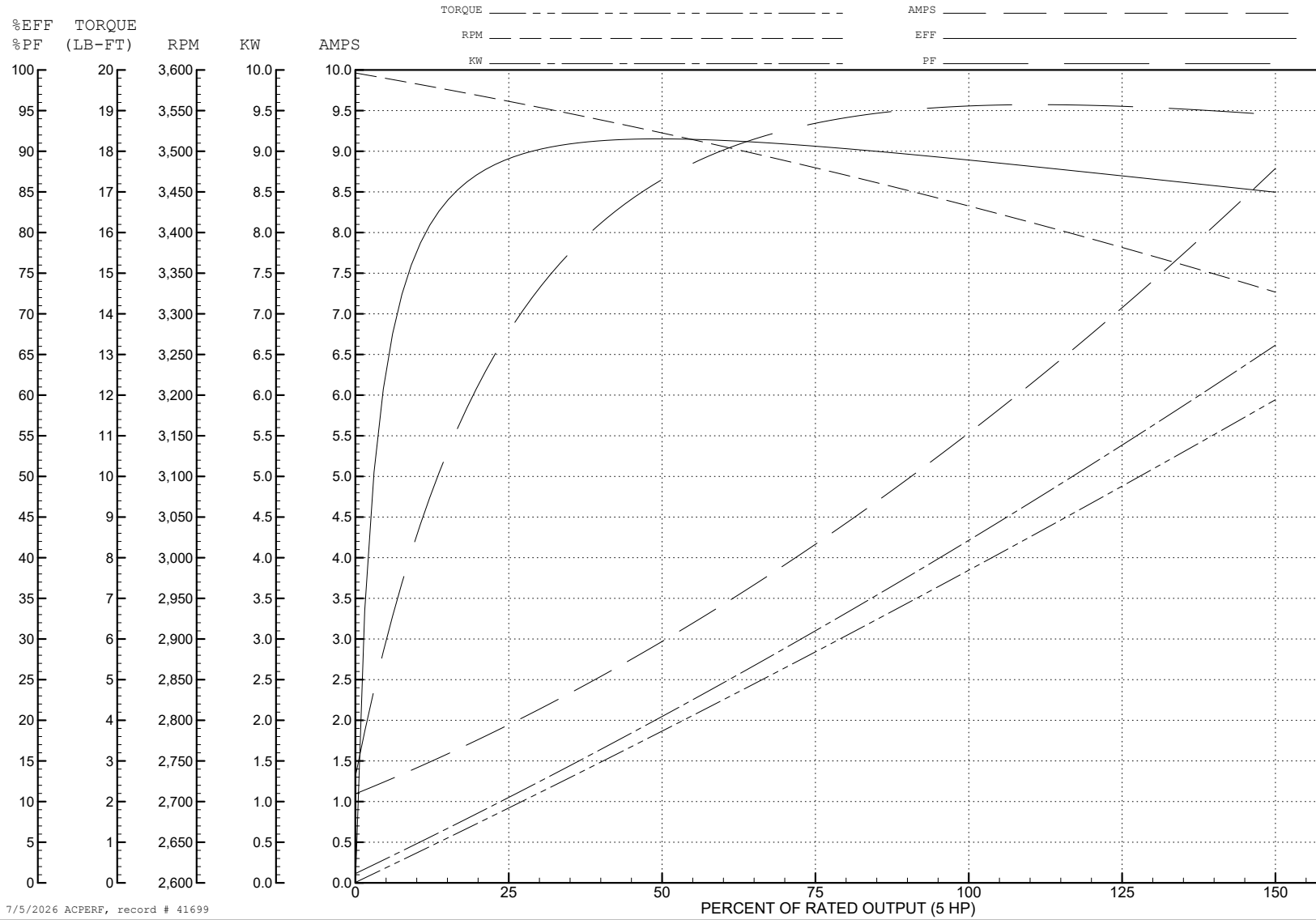
ABB Motors and Mechanical Inc.

WINDING # 36WGR114

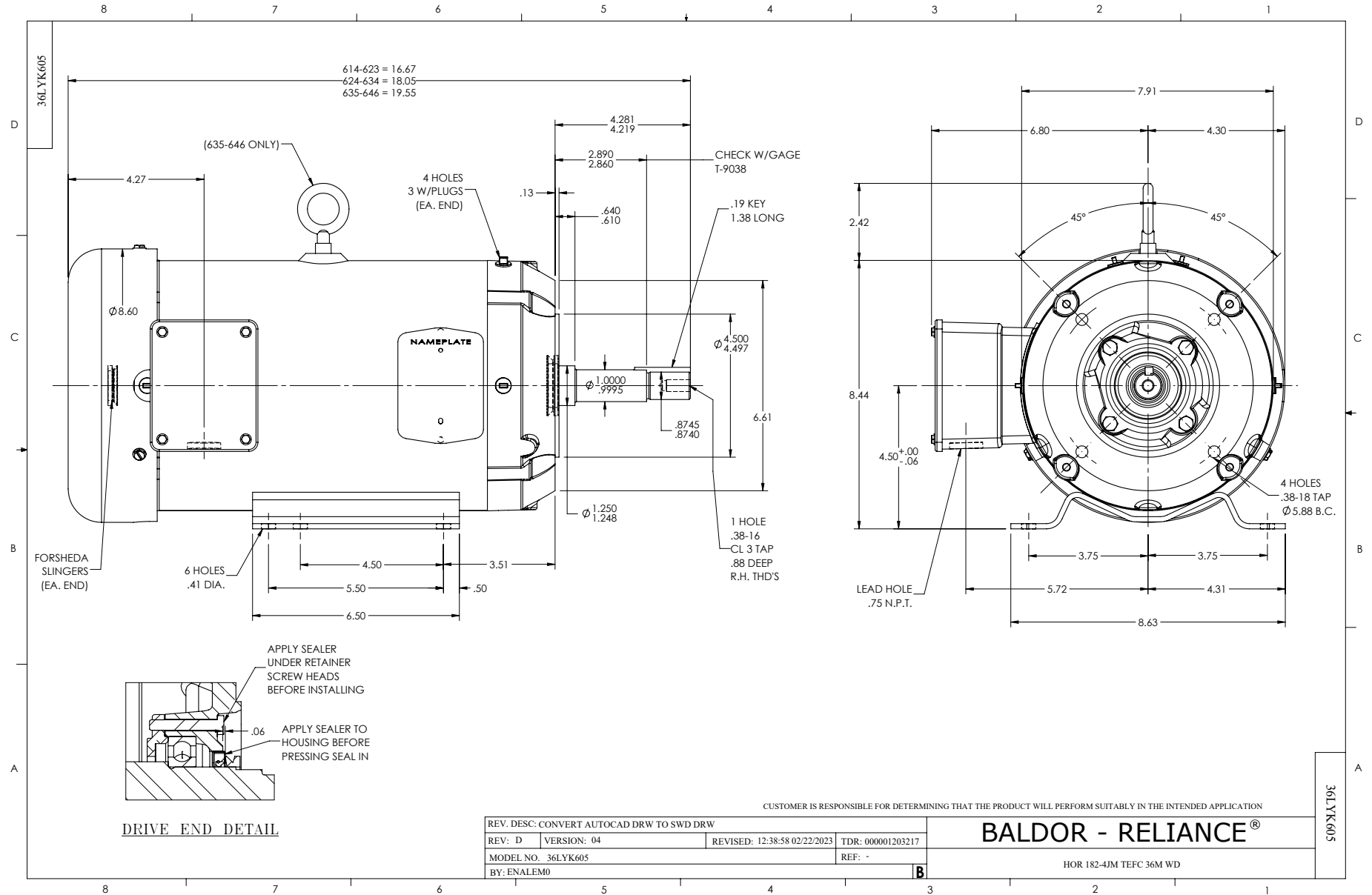
5 HP 3 PH 60 HZ 3430 RPM 460 V 3634M

Typical performance - not guaranteed values.

TORQUES (LB-FT): PO=31.7 PU=19.9 LR=23.1 LRA=45.5



7/5/2026 ACPERF, record # 41699



CD0005



LOW VOLTAGE
(2Y)



LINE

HIGH VOLTAGE
(1Y)



LINE

NOTES:

1. INTERCHANGE ANY TWO LINE LEADS TO REVERSE ROTATION.
2. OPTIONAL THERMOSTATS ARE PROVIDED WHEN SPECIFIED.
3. ACTUAL NUMBER OF INTERNAL PARALLEL CIRCUITS MAY BE A MULTIPLE OF THOSE SHOWN ABOVE.
4. LEAD COLORS ARE OPTIONAL. LEADS MUST ALWAYS BE NUMBERED AS SHOWN.

CD0005

REV. DESC: REVISE TO SHOW OPTIONAL COLORS

REV. LTR: E BY: JLP REVISED: 01/19/99 10:15 TDR: 0171435

500000

FILE: AAA00005140

MDL: -

MTL: -

BALDOR ELECTRIC Co.

3PH, DV, 9 LEADS