

ABB BALDOR RELIANCE III

Customer information packet

JM3158

3HP, 3450RPM, 3PH, 60HZ, 56J, 3524M, ODTF, F1

Class - None

Division - Not Applicable

Specifications

Enclosure	ODTF
Frame	56J
Frame Material	Steel
Frequency	60.00 Hz
Haz Area Class and Group	None
Haz Area Division	Not Applicable
Motor Letter Type	Three Phase
Output @ Frequency	3.000 HP @ 60 HZ
Phase	3
Synchronous Speed @ Frequency	3600 RPM @ 60 HZ
Voltage @ Frequency	460.0 V @ 60 HZ 230.0 V @ 60 HZ 208.0 V @ 60 HZ
Agency Approvals	CSA UR
Ambient Temperature	40 °C
Auxiliary Box	NO AUXILLARY BOX
Auxiliary Box Lead Termination	None
Base Indicator	No Mounting
Bearing Grease Type	Polyrex EM (-20F +300F)
Blower	None
Current @ Voltage	8.500 A @ 208.0 V 8.000 A @ 230.0 V 4.000 A @ 460.0 V
Design Code	B
Drip Cover	Drip Cover
Duty Rating	CONT
Efficiency @ 100% Load	80.0 %
Electrically Isolated Bearing	Not Electrically Isolated
Feedback Device	NO FEEDBACK
Front Face Code	Drip Cover Mounting
Front Shaft Indicator	None

Part Detail

Revision	AG
Type	AC
Mech. spec.	35E065
Base	
Status	PRD/A
Elec. spec.	35WGR286
Layout	35LYE065
Eff. date	10-29-2024
CD Diagram	CD0005
Poles	02
Leads	9#18
Proprietary	False
Created date	06-21-2007

Heater Indicator	No Heater
High Voltage Full Load Amps	4.0 a
Insulation Class	B
Inverter Code	Not Inverter
KVA Code	K
Lifting Lugs	No Lifting Lugs
Locked Bearing Indicator	Locked Bearing
Motor Lead Exit	Ko Box
Motor Lead Quantity/Wire Size	9 @ 18 AWG
Motor Lead Termination	Flying Leads
Motor Standards	NEMA
Motor Type	3524M
Mounting Arrangement	F1
Number of Poles	2
Overall Length	13.74 IN
Power Factor	87
Product Family	General Purpose
Pulley End Bearing Type	Ball
Pulley Face Code	C-Face
Pulley Shaft Indicator	Ext Thread
Rodent Screen	None
Service Factor	1.15
Shaft Diameter	0.625 IN
Shaft Extension Location	Pulley End
Shaft Ground Indicator	No Shaft Grounding
Shaft Rotation	Reversible
Shaft Slinger Indicator	No Slinger
Speed	3450 rpm
Speed Code	Single Speed
Starting Method	Direct on line
Thermal Device - Bearing	None
Thermal Device - Winding	None
Vibration Sensor Indicator	No Vibration Sensor
Winding Thermal 1	None

Winding Thermal 2

None

Nameplate

NP1256L										
CAT.NO.	JM3158									
SPEC.	35E065R286									
HP	3									
VOLTS	208-230/460									
AMP	8.5-8/4									
RPM	3450									
FRAME	56J		HZ	60			PH	3		
SER.F.	1.15	CODE	K	DES	B	CLASS		B		
NEMA-NOM-EFF	80	PF	87							
RATING	40C AMB-CONT									
CC										
DE	6205		ODE	6203						
ENCL	ODTF	SN								

ABB Motors and Mechanical Inc.

WINDING # 35WGR286

3 HP 3 PH 60 HZ 3450 RPM 460 V 3524M

Typical performance - not guaranteed values.

TORQUES (LB-FT): PO=16.8 PU=10.1 LR=14.2 LRA=30.9

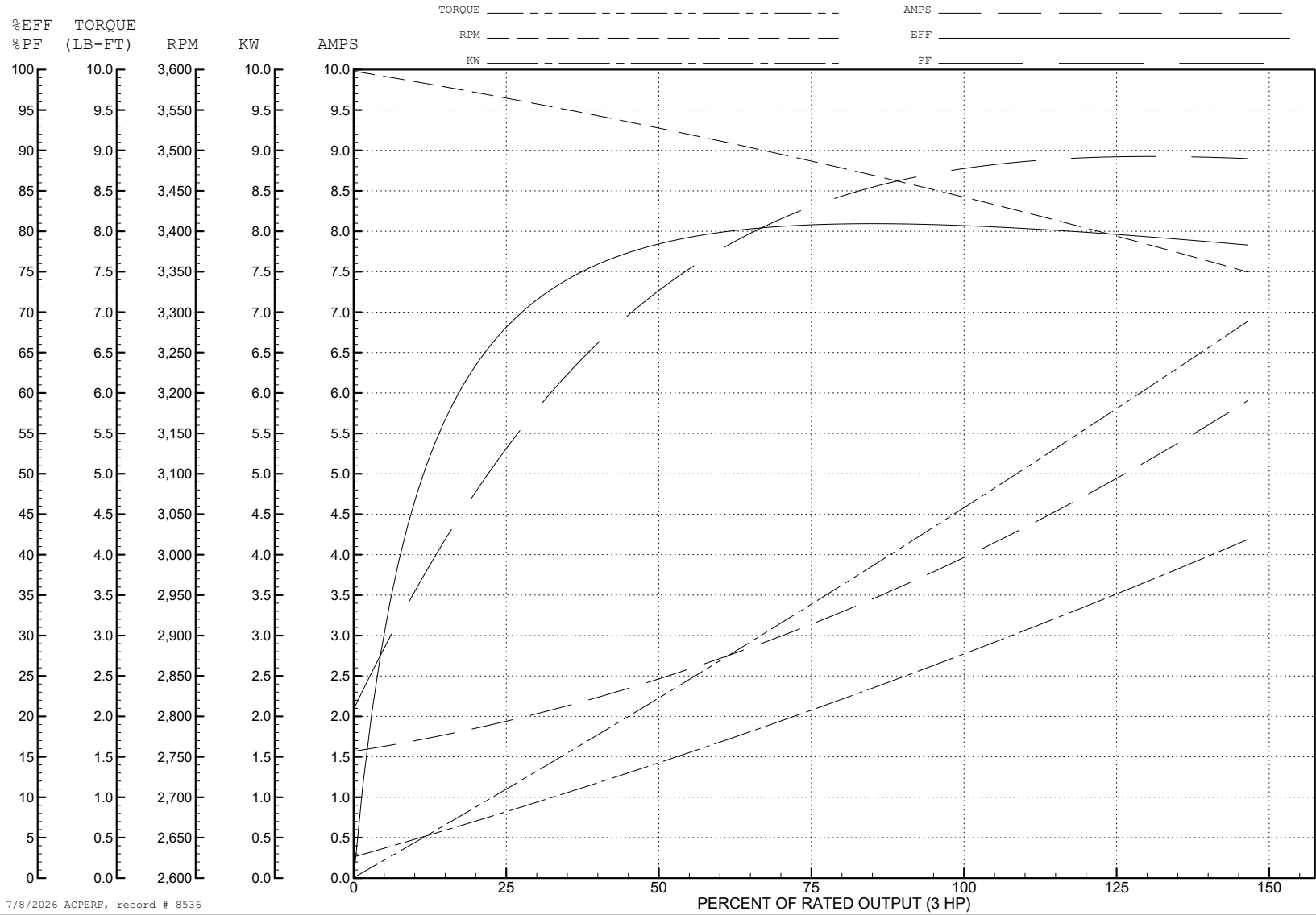


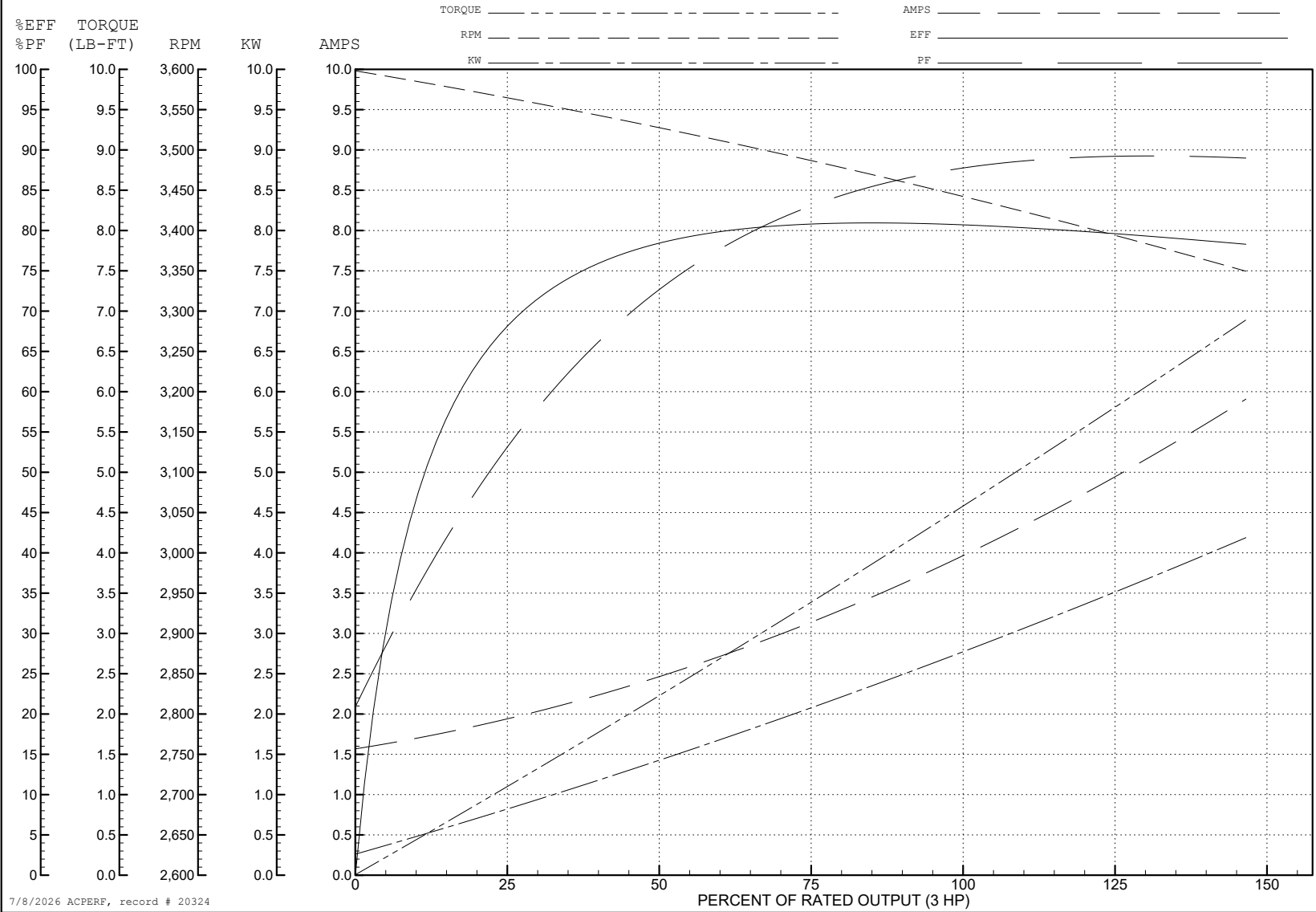
ABB Motors and Mechanical Inc.

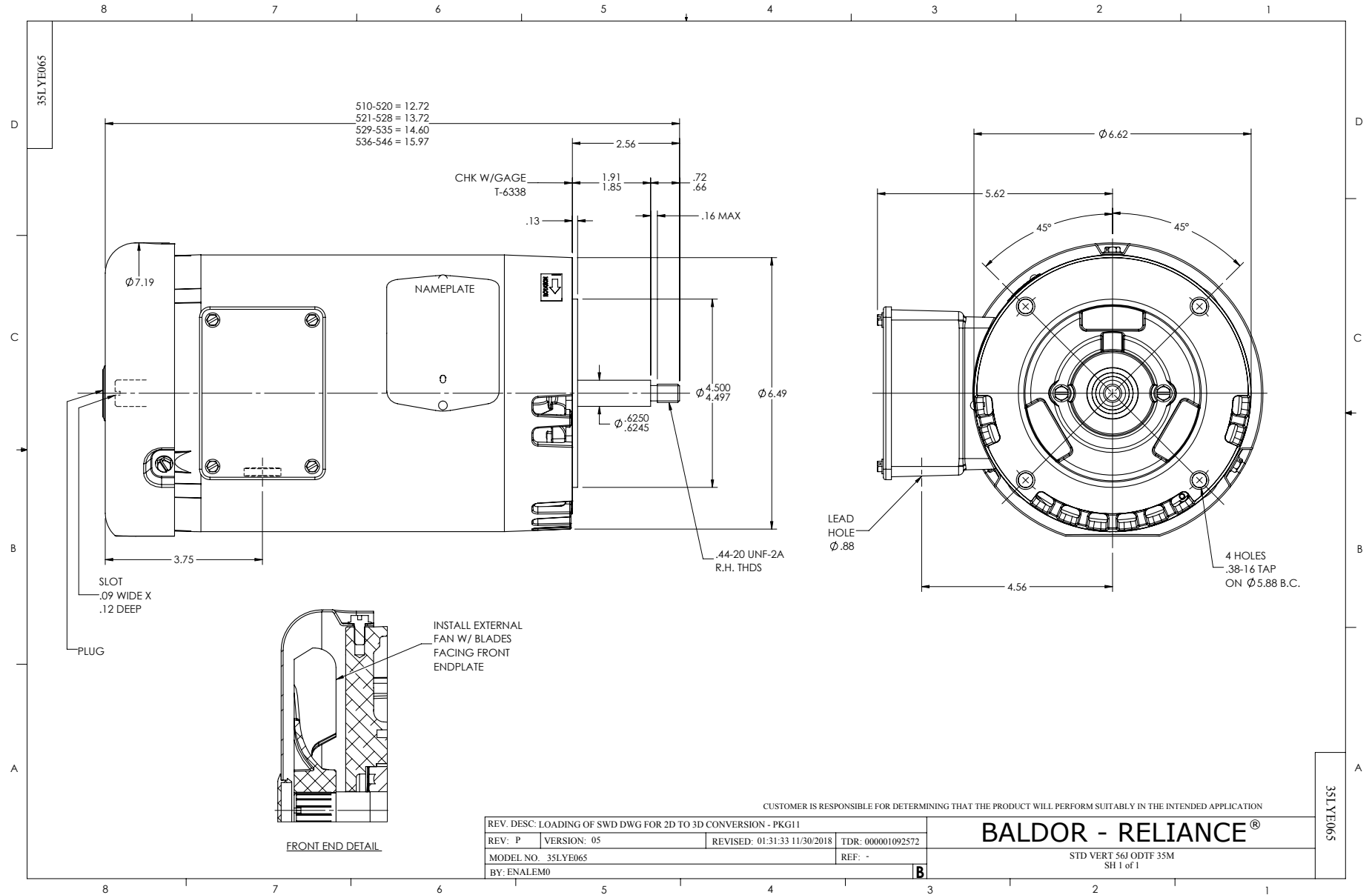
WINDING # 35WGR286

3 HP 3 PH 60 HZ 3450 RPM 460 V 3524M

Typical performance - not guaranteed values.

TORQUES (LB-FT): PO=16.8 PU=10.1 LR=14.2 LRA=30.9

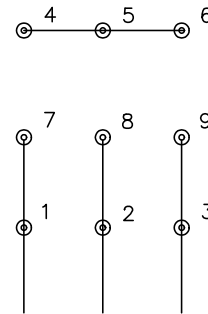




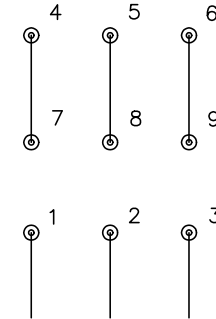
CD0005



LOW VOLTAGE
(2Y)



HIGH VOLTAGE
(1Y)



NOTES:

1. INTERCHANGE ANY TWO LINE LEADS TO REVERSE ROTATION.
2. OPTIONAL THERMOSTATS ARE PROVIDED WHEN SPECIFIED.
3. ACTUAL NUMBER OF INTERNAL PARALLEL CIRCUITS MAY BE A MULTIPLE OF THOSE SHOWN ABOVE.
4. LEAD COLORS ARE OPTIONAL. LEADS MUST ALWAYS BE NUMBERED AS SHOWN.

CD0005

REV. DESC: REVISE TO SHOW OPTIONAL COLORS

REV. LTR: E BY: JLP REVISED: 01/19/99 10:15 TDR: 0171435

500000

FILE: AAA00005140

MDL: -

MTL: -

BALDOR ELECTRIC Co.

3PH, DV, 9 LEADS