



Customer information packet

JM3120

1.5HP, 3450RPM, 3PH, 60HZ, 56J, 3424M, OPEN, F1

Class - None

Division - Not Applicable

Specifications

Enclosure	OPEN
Frame	56J
Frame Material	Steel
Frequency	60.00 Hz
Motor Letter Type	Three Phase
Output @ Frequency	1.500 HP @ 60 HZ
Phase	3
Synchronous Speed @ Frequency	3600 RPM @ 60 HZ
Voltage @ Frequency	230.0 V @ 60 HZ 460.0 V @ 60 HZ
XP Class and Group	None
XP Division	Not Applicable
Agency Approvals	CSA UR
Ambient Temperature	40 °C
Auxillary Box	No Auxillary Box
Auxillary Box Lead Termination	None
Base Indicator	No Mounting
Bearing Grease Type	Polyrex EM (-20F +300F)
Blower	None
Current @ Voltage	5.500 A @ 208.0 V 4.400 A @ 230.0 V 2.200 A @ 460.0 V
Design Code	B
Drip Cover	Drip Cover
Duty Rating	CONT
Efficiency @ 100% Load	74.0 %
Electrically Isolated Bearing	Not Electrically Isolated
Feedback Device	NO FEEDBACK
Front Face Code	Drip Cover Mounting
Front Shaft Indicator	None
Heater Indicator	No Heater

Part detail

Revision	M
Type	AC
Mech. spec.	34J770
Base	
Status	PRD/A
Elec. spec.	34WGY691
Layout	34LYJ770
Eff. date	02-08-2024
CD Diagram	CD0005
Poles	02
Leads	9#18
Proprietary	False
Created date	01-01-0001

High Voltage Full Load Amps	2.2 a
Insulation Class	B
Inverter Code	Not Inverter
KVA Code	L
Lifting Lugs	No Lifting Lugs
Locked Bearing Indicator	Locked Bearing
Motor Lead Exit	Ko Box
Motor Lead Quantity/Wire Size	9 @ 18 AWG
Motor Lead Termination	Flying Leads
Motor Standards	NEMA
Motor Type	3424M
Mounting Arrangement	F1
Number of Poles	2
Overall Length	13.22 IN
Power Factor	86
Product Family	General Purpose
Pulley End Bearing Type	Ball
Pulley Face Code	C-Face
Pulley Shaft Indicator	Ext Thread
Rodent Screen	None
RoHS Status	ROHS COMPLIANT
Service Factor	1.30
Shaft Diameter	0.625 IN
Shaft Extension Location	Pulley End
Shaft Ground Indicator	No Shaft Grounding
Shaft Rotation	Reversible
Shaft Slinger Indicator	No Slinger
Speed	3450 rpm
Speed Code	Single Speed
Starting Method	Direct on line
Thermal Device - Bearing	None
Thermal Device - Winding	None
Vibration Sensor Indicator	No Vibration Sensor

Nameplate

NP1256L									
CAT.NO.	JM3120								
SPEC.	34J770Y691								
HP	1.5								
VOLTS	230/460								
AMP	4.4/2.2								
RPM	3450								
FRAME	56J		HZ	60		PH	3		
SER.F.	1.30	CODE	L	DES	B	CLASS	B		
NEMA-NOM-EFF	74	PF	86						
RATING	40C AMB-CONT								
CC									
DE	6203		ODE	6203					
ENCL	OPEN	SN							
	SFA 5.4/2.7								

AC Induction Motor Performance Data

Record # 8002

Typical performance - not guaranteed values

Winding: 34WGY691-R001		Type: 3424M	Enclosure: OPEN	
Nameplate Data			460 V, 60 Hz: High Voltage Connection	
Rated Output (HP)	1.5	Full Load Torque	2.3 LB-FT	
Volts	230/460	Start Configuration	direct on line	
Full Load Amps	4.4/2.2	Breakdown Torque	9.6 LB-FT	
R.P.M.	3450	Pull-up Torque	7.9 LB-FT	
Hz	60 Phase	Locked-rotor Torque	9.3 LB-FT	
NEMA Design Code	B KVA Code	Starting Current	17.8 A	
Service Factor (S.F.)	1.3	No-load Current	1 A	
NEMA Nom. Eff.	74 Power Factor	Line-line Res. @ 25°C	9.5 Ω	
Rating - Duty	40C AMB-CONT	Temp. Rise @ Rated Load	45°C	
S.F. Amps	5.4/2.7	Temp. Rise @ S.F. Load	59°C	
		Locked-rotor Power Factor	61	
		Rotor inertia	0.0223 LB-FT ²	

Load Characteristics 460 V, 60 Hz, 1.5 HP

% of Rated Load	25	50	75	100	125	150	S.F.
Power Factor	56	70	79	86	90	88	91
Efficiency	53.7	67.6	73.4	74.2	74	74	74
Speed	3555	3523	3490	3456	3431	3338	3426
Line amperes	1.2	1.5	1.8	2.2	2.6	3.1	2.7

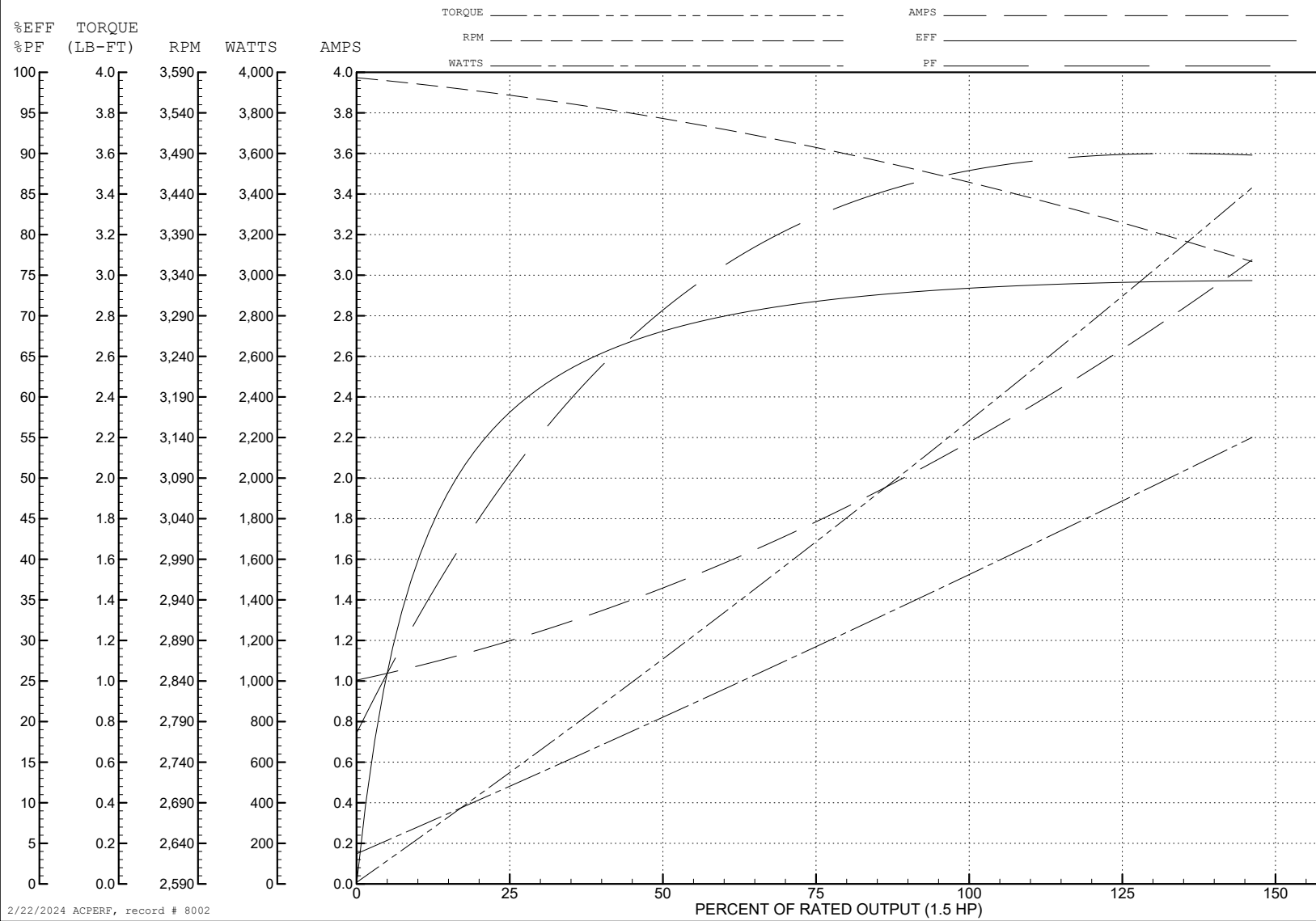
ABB Motors and Mechanical Inc.

WINDING # 34WGY691

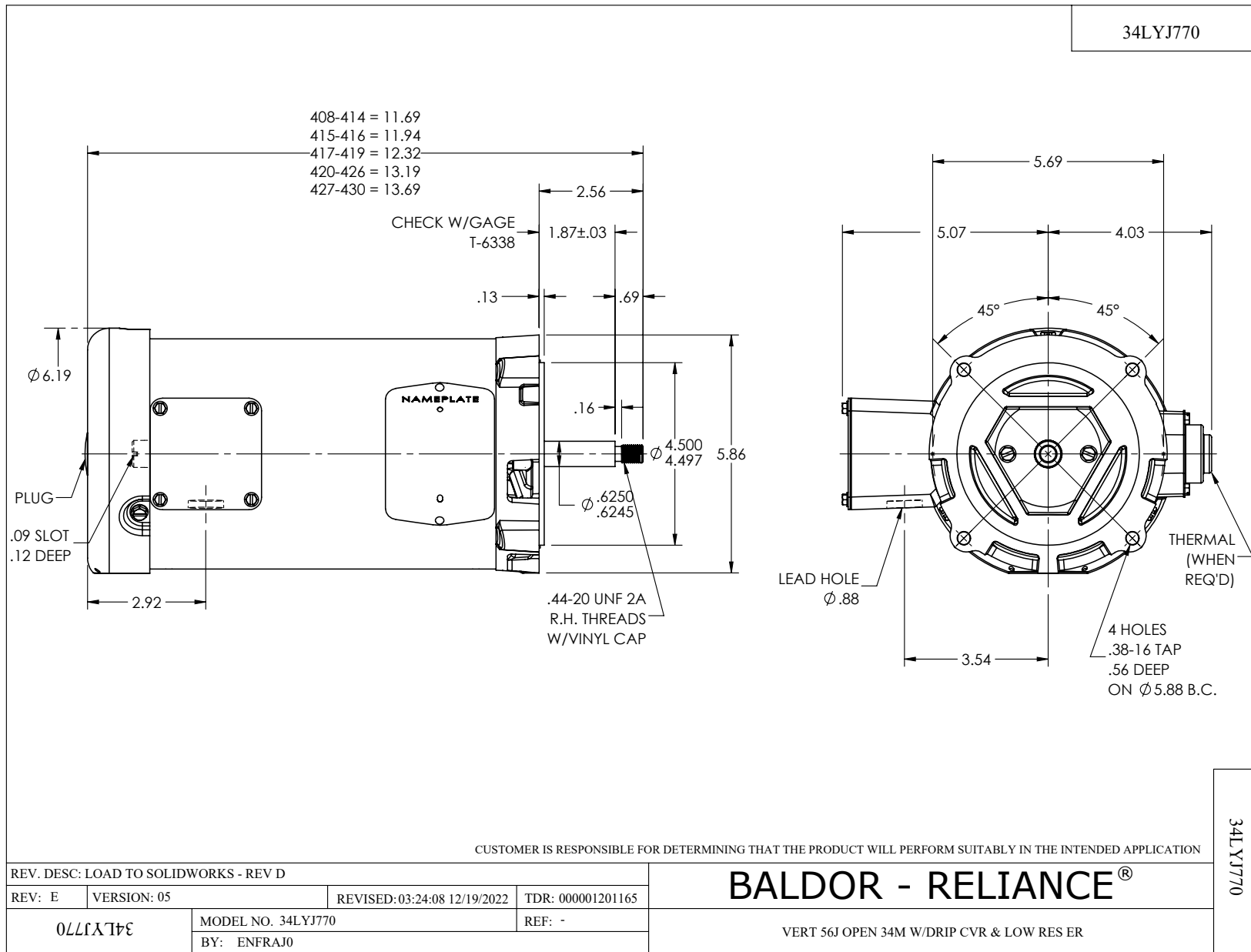
Typical performance - not guaranteed values.

1.5 HP 3 PH 60 HZ 3450 RPM 460 V 3424M

TORQUES (LB-FT): PO=9.6 PU=7.9 LR=9.3 LRA=17.8



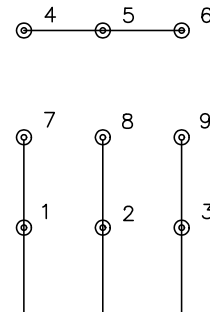
2/22/2024 ACPERF, record # 8002



CD0005



LOW VOLTAGE
(2Y)



LINE

HIGH VOLTAGE
(1Y)



LINE

NOTES:

1. INTERCHANGE ANY TWO LINE LEADS TO REVERSE ROTATION.
2. OPTIONAL THERMOSTATS ARE PROVIDED WHEN SPECIFIED.
3. ACTUAL NUMBER OF INTERNAL PARALLEL CIRCUITS MAY BE A MULTIPLE OF THOSE SHOWN ABOVE.
4. LEAD COLORS ARE OPTIONAL. LEADS MUST ALWAYS BE NUMBERED AS SHOWN.

CD0005

REV. DESC: REVISE TO SHOW OPTIONAL COLORS			
REV. LTR: E	BY: JLP	REVISED: 01/19/99 10:15	TDR: 0171435
S00000		FILE: AAA00005140	MDL: -
		MTL: -	

BALDOR ELECTRIC Co.

3PH, DV, 9 LEADS