



Customer information packet

JL3516A

2HP, 1725RPM, 1PH, 60HZ, 56J, 3535LC, TEFC, F1

Class - None

Division - Not Applicable

Specifications

Enclosure	TEFC
Frame	56J
Frame Material	Steel
Frequency	60.00 Hz
Haz Area Class and Group	None
Haz Area Division	Not Applicable
Motor Letter Type	Cap Start, Cap Run
Output @ Frequency	2.000 HP @ 60 HZ
Phase	1
Synchronous Speed @ Frequency	1800 RPM @ 60 HZ
Voltage @ Frequency	115.0 V @ 60 HZ 230.0 V @ 60 HZ
Agency Approvals	UR CSA
Ambient Temperature	40 °C
Auxillary Box	No Auxillary Box
Auxillary Box Lead Termination	None
Base Indicator	No Mounting
Bearing Grease Type	Polyrex EM (-20F +300F)
Blower	None
Current @ Voltage	17.200 A @ 115.0 V 8.600 A @ 230.0 V
Design Code	L
Drip Cover	No Drip Cover
Duty Rating	CONT
Efficiency @ 100% Load	78.0 %
Electrically Isolated Bearing	Not Electrically Isolated
Feedback Device	NO FEEDBACK
Front Face Code	Standard
Front Shaft Indicator	None
Heater Indicator	No Heater
High Voltage Full Load Amps	8.6 a

Part detail

Revision	AB
Type	AC
Mech. spec.	35N778
Base	
Status	PRD/A
Elec. spec.	35WGT490
Layout	35LYN778
Eff. date	05-14-2024
CD Diagram	CD0308
Poles	04
Leads	4#14 A&J,1#12 #4TH Y
Proprietary	False
Created date	01-01-0001

Insulation Class	F
Inverter Code	Not Inverter
KVA Code	J
Lifting Lugs	No Lifting Lugs
Locked Bearing Indicator	Locked Bearing
Motor Lead Exit	Ko Box
Motor Lead Quantity/Wire Size	4 @ 14 AWG, A&J
Motor Lead Termination	Flying Leads
Motor Standards	NEMA
Motor Type	3535LC
Mounting Arrangement	F1
Number of Poles	4
Overall Length	14.62 IN
Power Factor	99
Product Family	General Purpose
Pulley End Bearing Type	Ball
Pulley Face Code	C-Face
Pulley Shaft Indicator	Ext Thread
Rodent Screen	None
Service Factor	1.15
Shaft Diameter	0.625 IN
Shaft Extension Location	Pulley End
Shaft Ground Indicator	No Shaft Grounding
Shaft Rotation	Fixed Opposite Standard
Shaft Slinger Indicator	No Slinger
Speed	1725 rpm
Speed Code	Single Speed
Starting Method	Direct on line
Thermal Device - Bearing	None
Thermal Device - Winding	Do Not Use Eve-Not Valid
Vibration Sensor Indicator	No Vibration Sensor
Winding Thermal 1	Automatic Thermal Overload
Winding Thermal 1 Location	KO
Winding Thermal 2	None

Nameplate

NP1257L									
CAT.NO.	JL3516A								
SPEC.	35N778T490G1								
HP	2								
VOLTS	115/230								
AMP	17.2/8.6								
RPM	1725								
FRAME	56J			HZ	60		PH	1	
SER.F.	1.00	CODE	J	DES	L	CL	F		
NEMA-NOM-EFF	78	PF	99						
RATING	40C AMB-CONT								
CC									
DE	6205	ODE	6203						
ENCL	TEFC	SN							

AC Induction Motor Performance Data

Record # 9431

Typical performance - not guaranteed values

Winding: 35WGT490-R001		Type: 3535LC	Enclosure: TEFC	
Nameplate Data			230 V, 60 Hz: High Voltage Connection	
Rated Output (HP)	2		Full Load Torque	6.16 LB-FT
Volts	115/230		Start Configuration	direct on line
Full Load Amps	17.2/8.6		Breakdown Torque	13.7 LB-FT
R.P.M.	1725		Pull-up Torque	7.83 LB-FT
Hz	60 Phase	1	Locked-rotor Torque	12.9 LB-FT
NEMA Design Code	L	KVA Code J	Starting Current	58.2 A
Service Factor (S.F.)	1.15		No-load Current	2.36 A
NEMA Nom. Eff.	78	Power Factor	99	Line-line Res. @ 25°C 1.68 Ω A Ph 1.84 Ω B Ph
Rating - Duty	40C AMB-CONT		Temp. Rise @ Rated Load	

Load Characteristics 230 V, 60 Hz, 2 HP

% of Rated Load	25	50	75	100	125	150	S.F.
Power Factor	74	86	91	92	93	93	93
Efficiency	66.9	78.8	80.4	80.3	77.2	72.4	78.4
Speed	1789	1778	1764	1748	1731	1701	1738
Line amperes	3.29	4.85	6.85	8.97	11.1	14.6	10.25

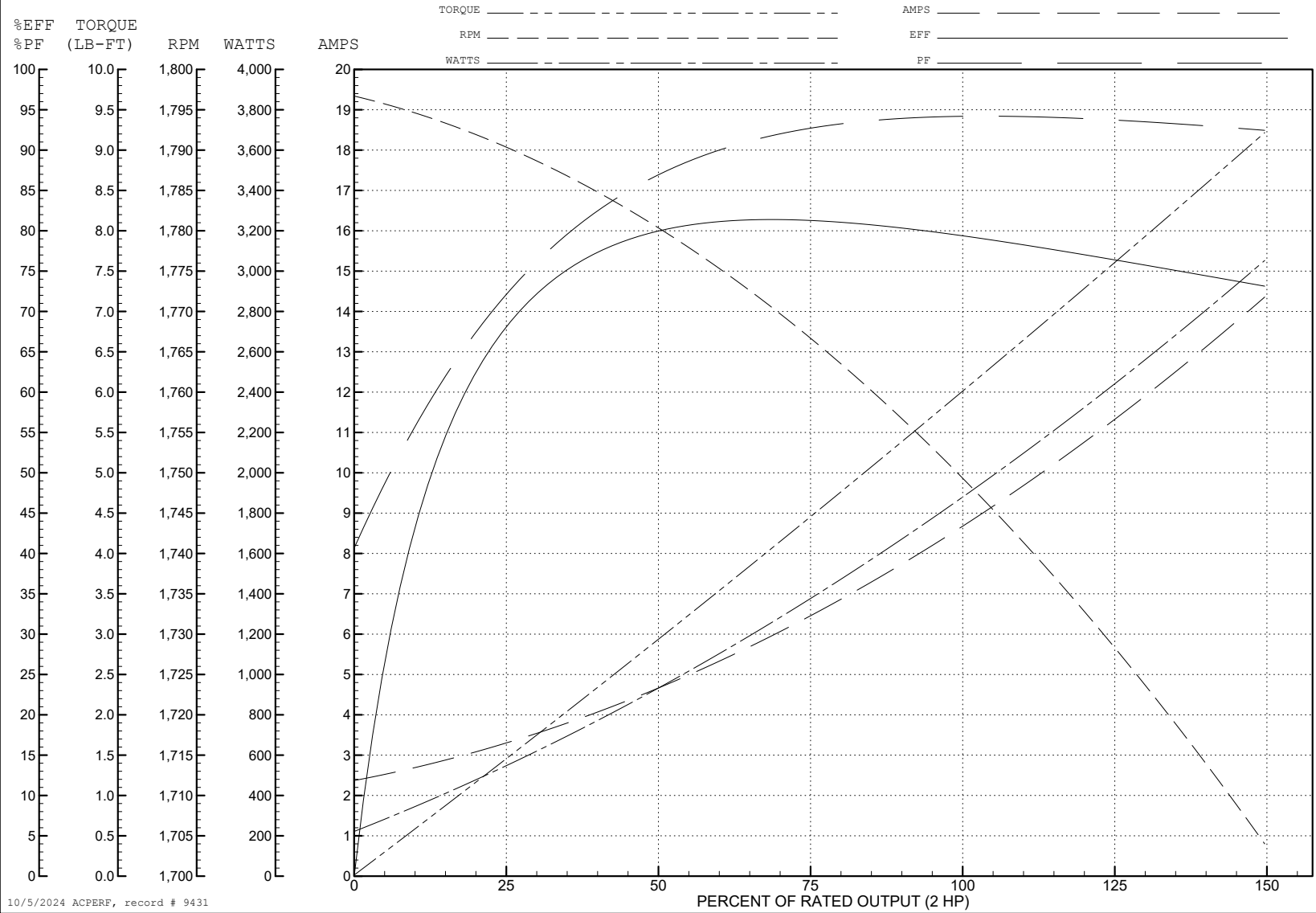
ABB Motors and Mechanical Inc.

WINDING # 35WGT490

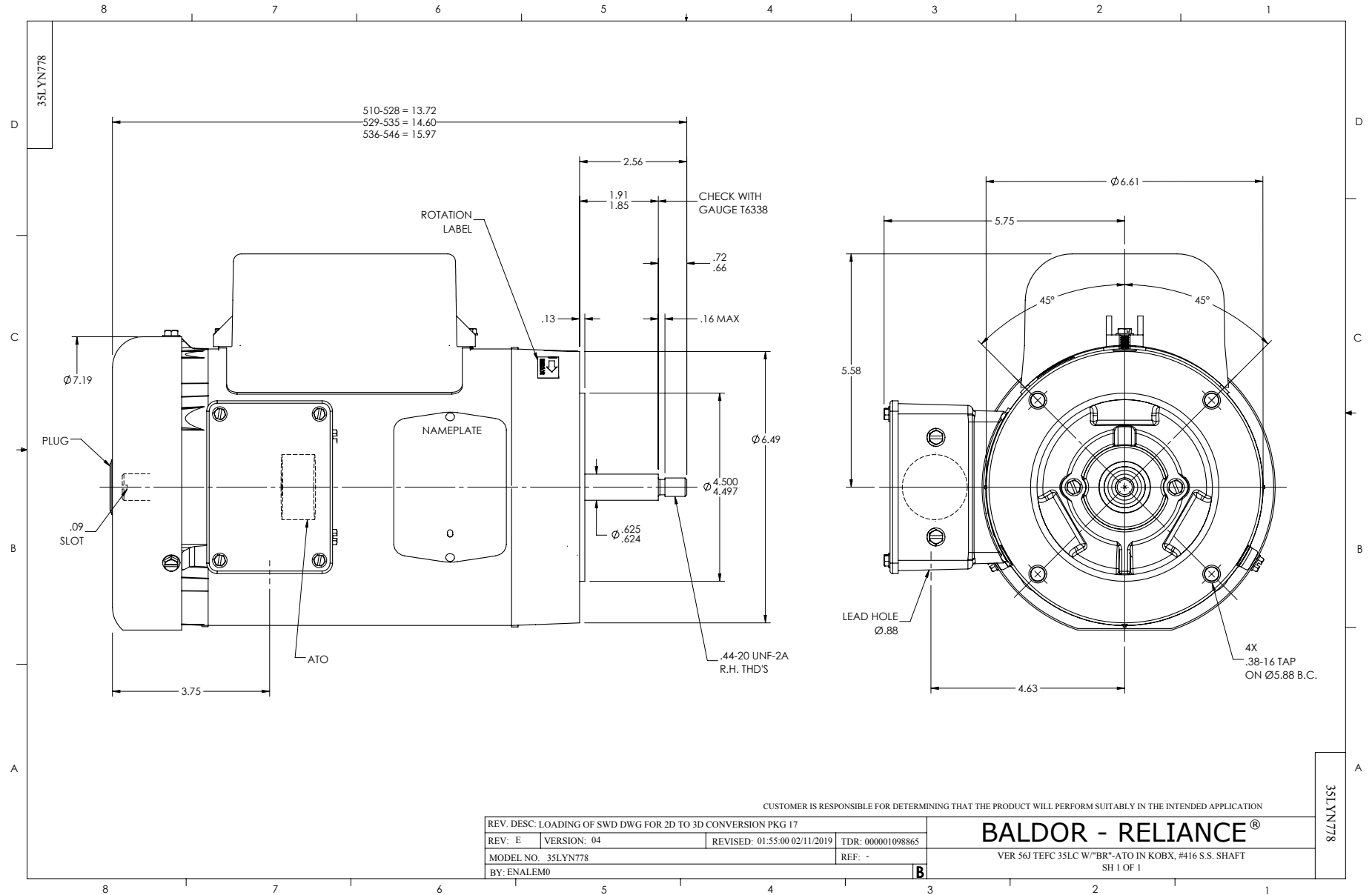
Typical performance - not guaranteed values.

2 HP 1 PH 60 HZ 1725 RPM 230 V 3535LC

TORQUES (LB-FT): PO=13.7 PU=7.83 LR=12.9 LRA=58.2



10/5/2024 ACPERF, record # 9431

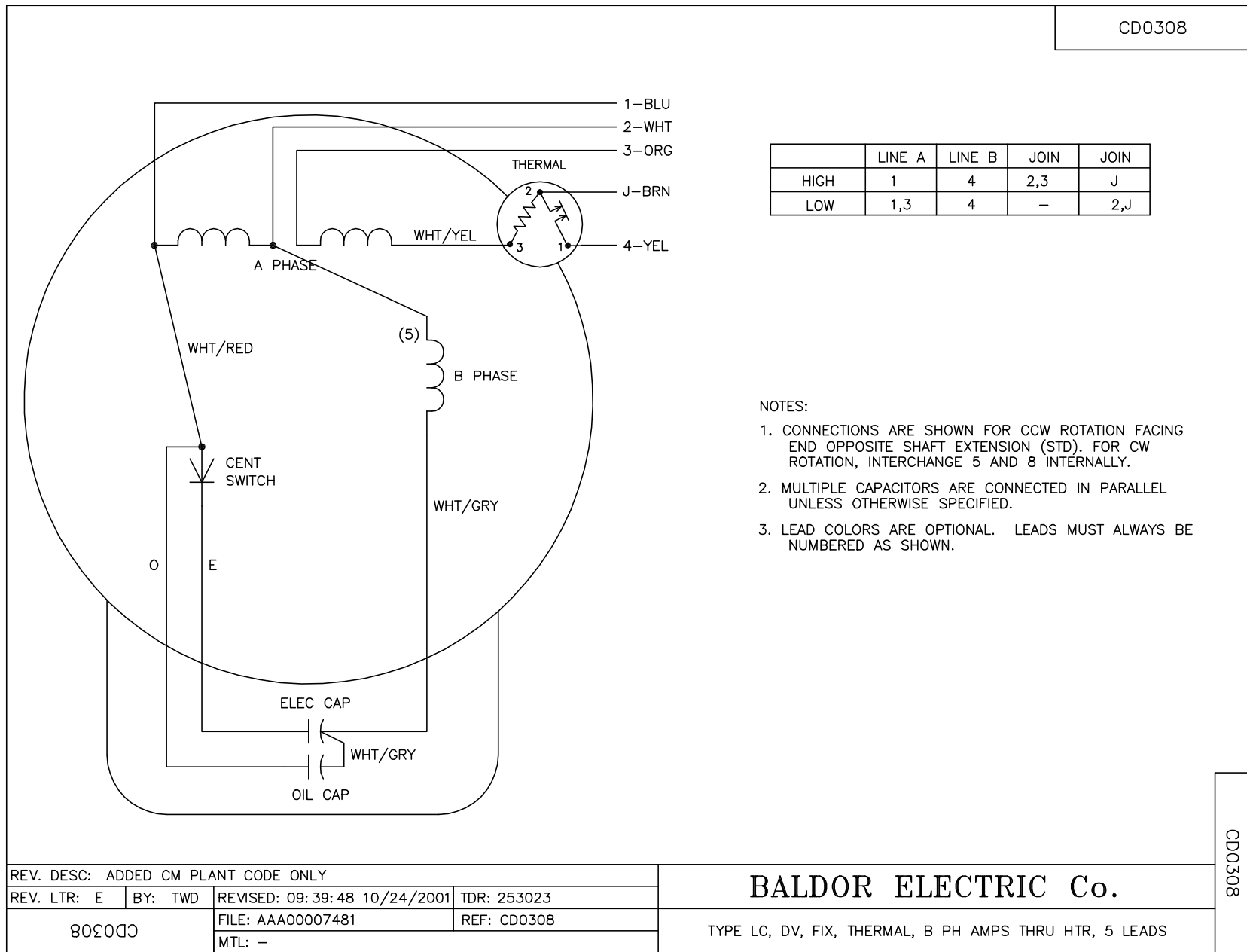


CUSTOMER IS RESPONSIBLE FOR DETERMINING THAT THE PRODUCT WILL PERFORM SUITABLY IN THE INTENDED APPLICATION

REV. DESC: LOADING OF SWD DWG FOR 2D TO 3D CONVERSION PKG 17			
REV: E	VERSION: 04	REVISED: 01:55:00 02/11/2019	TDR: 000001098865
MODEL NO. 35LYN778		REF: -	
BY: ENALEM0			

BALDOR - RELIANCE®
 VER 56J TEFC 35LC W™BR™-ATO IN KOBX, #416 S.S. SHAFT
 SH 1 OF 1

CD0308



	LINE A	LINE B	JOIN	JOIN
HIGH	1	4	2,3	J
LOW	1,3	4	-	2,J

NOTES:

1. CONNECTIONS ARE SHOWN FOR CCW ROTATION FACING END OPPOSITE SHAFT EXTENSION (STD). FOR CW ROTATION, INTERCHANGE 5 AND 8 INTERNALLY.
2. MULTIPLE CAPACITORS ARE CONNECTED IN PARALLEL UNLESS OTHERWISE SPECIFIED.
3. LEAD COLORS ARE OPTIONAL. LEADS MUST ALWAYS BE NUMBERED AS SHOWN.

REV. DESC: ADDED CM PLANT CODE ONLY			
REV. LTR: E	BY: TWD	REVISED: 09:39:48 10/24/2001	TDR: 253023
803000		FILE: AAA00007481	REF: CD0308
		MTL: -	

BALDOR ELECTRIC Co.

TYPE LC, DV, FIX, THERMAL, B PH AMPS THRU HTR, 5 LEADS

CD0308