

ABB BALDOR RELIANCE III

Customer information packet

JL3513A

1.5HP, 3450RPM, 1PH, 60HZ, 56J, 3528L, TEFC, F1

Class - None

Division - Not Applicable

Specifications

Enclosure	TEFC
Frame	56J
Frame Material	Steel
Frequency	60.00 Hz
Haz Area Class and Group	None
Haz Area Division	Not Applicable
Motor Letter Type	Cap Start, Induction Run
Output @ Frequency	1.500 HP @ 60 HZ
Phase	1
Synchronous Speed @ Frequency	3600 RPM @ 60 HZ
Voltage @ Frequency	115.0 V @ 60 HZ 230.0 V @ 60 HZ
Agency Approvals	UR CSA
Ambient Temperature	40 °C
Auxiliary Box	NO AUXILLARY BOX
Auxiliary Box Lead Termination	None
Base Indicator	No Mounting
Bearing Grease Type	Polyrex EM (-20F +300F)
Blower	None
Current @ Voltage	16.600 A @ 115.0 V 8.300 A @ 230.0 V 8.600 A @ 208.0 V
Design Code	L
Drip Cover	No Drip Cover
Duty Rating	CONT
Efficiency @ 100% Load	70.0 %
Electrically Isolated Bearing	Not Electrically Isolated
Feedback Device	NO FEEDBACK
Front Face Code	Standard
Front Shaft Indicator	None
Heater Indicator	No Heater

Part Detail

Revision	BK
Type	AC
Mech. spec.	35F083
Base	
Status	PRD/A
Elec. spec.	35WG0525
Layout	35LYF083
Eff. date	10-10-2024
CD Diagram	CD0094
Poles	02
Leads	4#16 A&J,1#14 #4TH
Proprietary	False
Created date	06-21-2007

High Voltage Full Load Amps	8.3 a
Insulation Class	F
Inverter Code	Not Inverter
KVA Code	H
Lifting Lugs	No Lifting Lugs
Locked Bearing Indicator	Locked Bearing
Motor Lead Exit	Ko Box
Motor Lead Quantity/Wire Size	4 @ 16 AWG, A&J
Motor Lead Termination	Flying Leads
Motor Standards	NEMA
Motor Type	3528L
Mounting Arrangement	F1
Number of Poles	2
Overall Length	13.74 IN
Power Factor	82
Product Family	General Purpose
Pulley End Bearing Type	Ball
Pulley Face Code	C-Face
Pulley Shaft Indicator	Ext Thread
Rodent Screen	None
RoHS Status	ROHS COMPLIANT
Service Factor	1.00
Shaft Diameter	0.625 IN
Shaft Extension Location	Pulley End
Shaft Ground Indicator	No Shaft Grounding
Shaft Rotation	Fixed Opposite Standard
Shaft Slinger Indicator	No Slinger
Speed	3450 rpm
Speed Code	Single Speed
Starting Method	Direct on line
Thermal Device - Bearing	None
Thermal Device - Winding	Do Not Use Eve-Not Valiid
Vibration Sensor Indicator	No Vibration Sensor
Winding Thermal 1	Automatic Thermal Overload

Winding Thermal 1 Location

SB

Winding Thermal 2

None

Nameplate

NP1257L									
CAT.NO.	JL3513A								
SPEC.	35F83-525								
HP	1.5								
VOLTS	115/230								
AMP	16.6/8.3								
RPM	3450								
FRAME	56J		HZ	60		PH	1		
SER.F.	1.00	CODE	H	DES	L	CL	F		
NEMA-NOM-EFF	70	PF	82						
RATING	40C AMB-CONT								
CC									
DE	6205	ODE	6203						
ENCL	TEFC	SN							

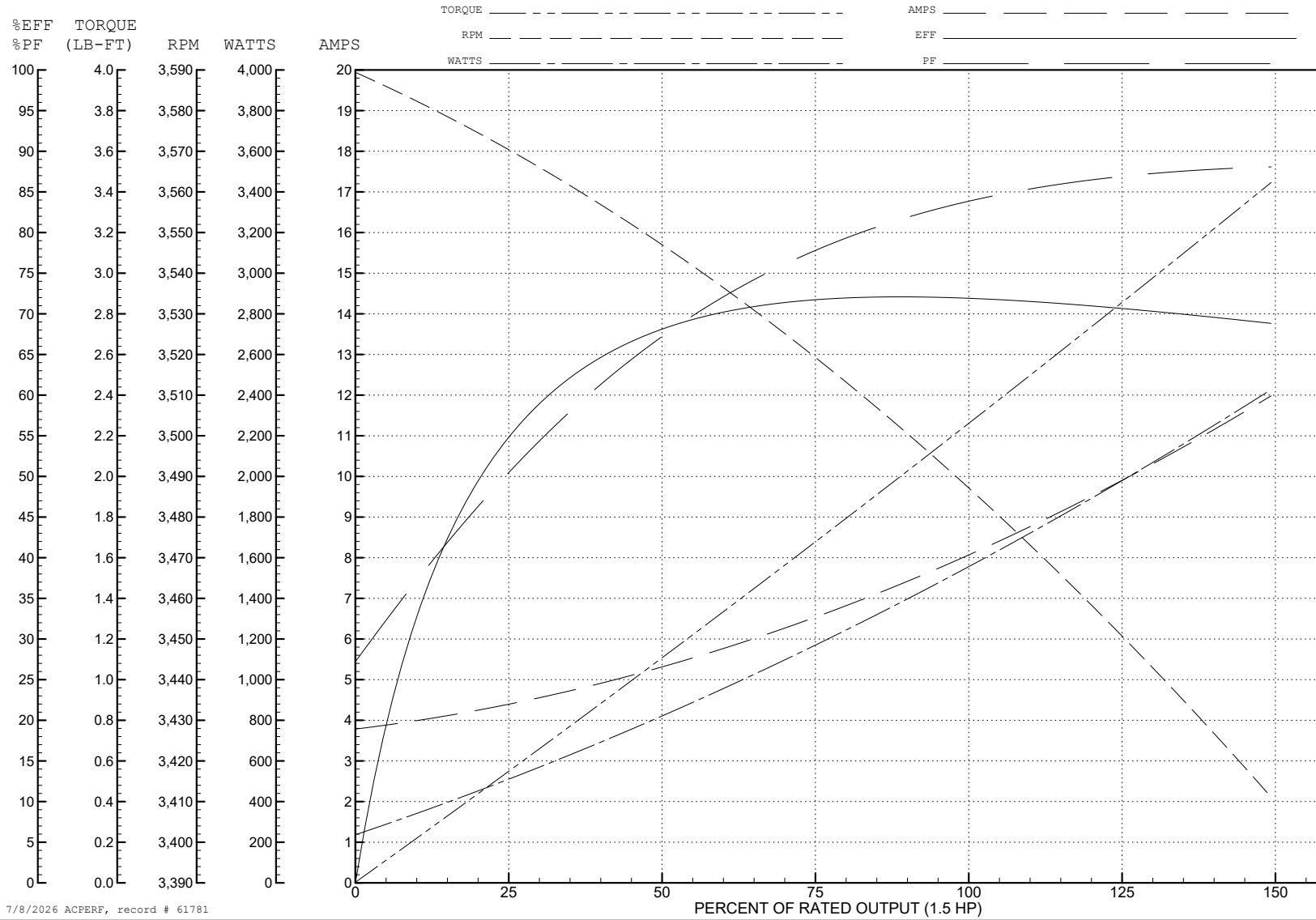
ABB Motors and Mechanical Inc.

WINDING # 35WG0525

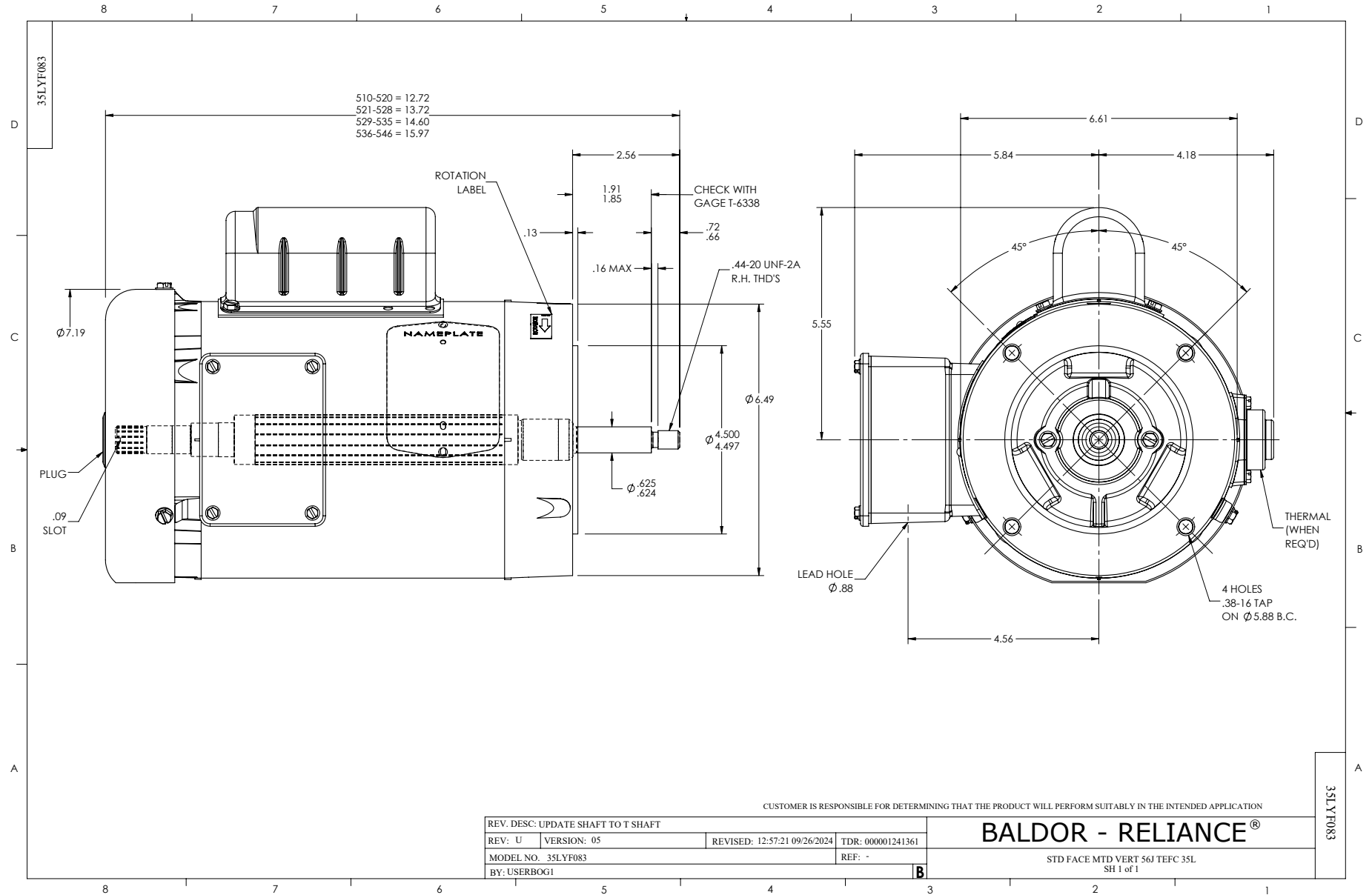
1.5 HP 1 PH 60 HZ 3450 RPM 230 V 3528L

Typical performance - not guaranteed values.

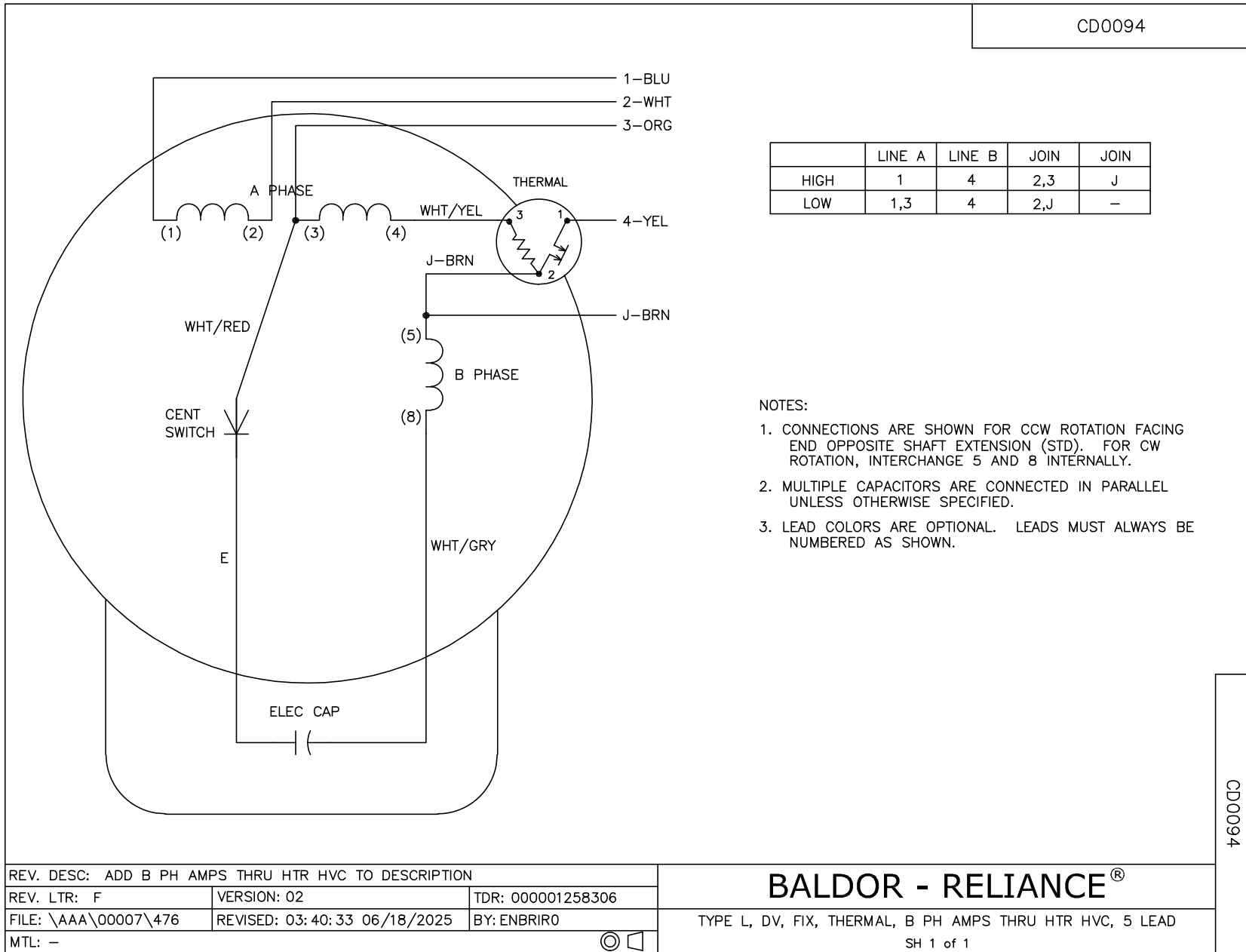
TORQUES (LB-FT): PO=5.6 PU=4.2 LR=5.5 LRA=42



7/8/2026 ACPERF, record # 61781



CD0094



	LINE A	LINE B	JOIN	JOIN
HIGH	1	4	2,3	J
LOW	1,3	4	2,J	-

NOTES:

1. CONNECTIONS ARE SHOWN FOR CCW ROTATION FACING END OPPOSITE SHAFT EXTENSION (STD). FOR CW ROTATION, INTERCHANGE 5 AND 8 INTERNALLY.
2. MULTIPLE CAPACITORS ARE CONNECTED IN PARALLEL UNLESS OTHERWISE SPECIFIED.
3. LEAD COLORS ARE OPTIONAL. LEADS MUST ALWAYS BE NUMBERED AS SHOWN.

CD0094

REV. DESC: ADD B PH AMPS THRU HTR HVC TO DESCRIPTION		
REV. LTR: F	VERSION: 02	TDR: 000001258306
FILE: \AAA\00007\476	REVISED: 03:40:33 06/18/2025	BY: ENBRIRO
MTL: -	©	

BALDOR - RELIANCE®

TYPE L, DV, FIX, THERMAL, B PH AMPS THRU HTR HVC, 5 LEAD

SH 1 of 1