



Customer information packet

JL3510A

1HP, 1725RPM, 1PH, 60HZ, 56J, 3528L, TEFC, F1

Class - None

Division - Not Applicable

Specifications

Enclosure	TEFC
Frame	56J
Frame Material	Steel
Frequency	60.00 Hz
Haz Area Class and Group	None
Haz Area Division	Not Applicable
Motor Letter Type	Cap Start, Induction Run
Output @ Frequency	1.000 HP @ 60 HZ
Phase	1
Synchronous Speed @ Frequency	1800 RPM @ 60 HZ
Voltage @ Frequency	115.0 V @ 60 HZ 230.0 V @ 60 HZ
Agency Approvals	UR CSA
Ambient Temperature	40 °C
Auxillary Box	No Auxillary Box
Auxillary Box Lead Termination	None
Base Indicator	No Mounting
Bearing Grease Type	Polyrex EM (-20F +300F)
Blower	None
Current @ Voltage	12.400 A @ 115.0 V 6.200 A @ 230.0 V
Design Code	L
Drip Cover	No Drip Cover
Duty Rating	CONT
Efficiency @ 100% Load	67.0 %
Electrically Isolated Bearing	Not Electrically Isolated
Feedback Device	NO FEEDBACK
Front Face Code	Standard
Front Shaft Indicator	None
Heater Indicator	No Heater
High Voltage Full Load Amps	6.2 a

Part detail

Revision	AJ
Type	AC
Mech. spec.	35F083
Base	
Status	PRD/A
Elec. spec.	35WG0527
Layout	35LYF083
Eff. date	05-09-2024
CD Diagram	CD0094
Poles	04
Leads	4#18 A&J,1#14 #4TH Y
Proprietary	False
Created date	01-01-0001

Insulation Class	F
Inverter Code	Not Inverter
KVA Code	K
Lifting Lugs	No Lifting Lugs
Locked Bearing Indicator	Locked Bearing
Motor Lead Exit	Ko Box
Motor Lead Quantity/Wire Size	4 @ 18 AWG, A&J
Motor Lead Termination	Flying Leads
Motor Standards	NEMA
Motor Type	3528L
Mounting Arrangement	F1
Number of Poles	4
Overall Length	13.74 IN
Power Factor	68
Product Family	General Purpose
Pulley End Bearing Type	Ball
Pulley Face Code	C-Face
Pulley Shaft Indicator	Ext Thread
Rodent Screen	None
Service Factor	1.00
Shaft Diameter	0.625 IN
Shaft Extension Location	Pulley End
Shaft Ground Indicator	No Shaft Grounding
Shaft Rotation	Fixed Opposite Standard
Shaft Slinger Indicator	No Slinger
Speed	1725 rpm
Speed Code	Single Speed
Starting Method	Direct on line
Thermal Device - Bearing	None
Thermal Device - Winding	Do Not Use Eve-Not Valid
Vibration Sensor Indicator	No Vibration Sensor
Winding Thermal 1	Automatic Thermal Overload
Winding Thermal 1 Location	SB
Winding Thermal 2	None

Nameplate

NP1257L									
CAT.NO.	JL3510A								
SPEC.	35F083-0527G1								
HP	1								
VOLTS	115/230								
AMP	12.4/6.2								
RPM	1725								
FRAME	56J			HZ	60		PH	1	
SER.F.	1.00	CODE	K	DES	L	CL	F		
NEMA-NOM-EFF	67	PF	68						
RATING	40C AMB-CONT								
CC									
DE	6205	ODE	6203						
ENCL	TEFC	SN							

AC Induction Motor Performance Data

Record # 61948

Typical performance - not guaranteed values

Winding: 35WG0527-R003		Type: 3528L		Enclosure: OPEN	
Nameplate Data			115 V, 60 Hz: Low Voltage Connection		
Rated Output (HP)	1	Full Load Torque	3 LB-FT		
Volts	115/230	Start Configuration	direct on line		
Full Load Amps	12.4/6.2	Breakdown Torque	7 LB-FT		
R.P.M.	1725	Pull-up Torque	3 LB-FT		
Hz	60 Phase	1	Locked-rotor Torque	7.9 LB-FT	
NEMA Design Code	L KVA Code	K	Starting Current	78 A	
Service Factor (S.F.)		1	No-load Current	7.6 A	
NEMA Nom. Eff.	67 Power Factor	68	Line-line Res. @ 25°C	0.684 Ω A Ph 1.69 Ω B Ph	
Rating - Duty	40C AMB-CONT		Temp. Rise @ Rated Load	42°C	
			Locked-rotor Power Factor	93.3	
			Rotor inertia	0.166 LB-FT ²	

Load Characteristics 115 V, 60 Hz, 1 HP

% of Rated Load	25	50	75	100	125	150
Power Factor	41	57	70	76	83	86
Efficiency	51	64.5	67	68.5	66.5	63.5
Speed	1790	1780	1765	1750	1735	1710
Line amperes	8	9	10.4	12.4	14.5	17.4

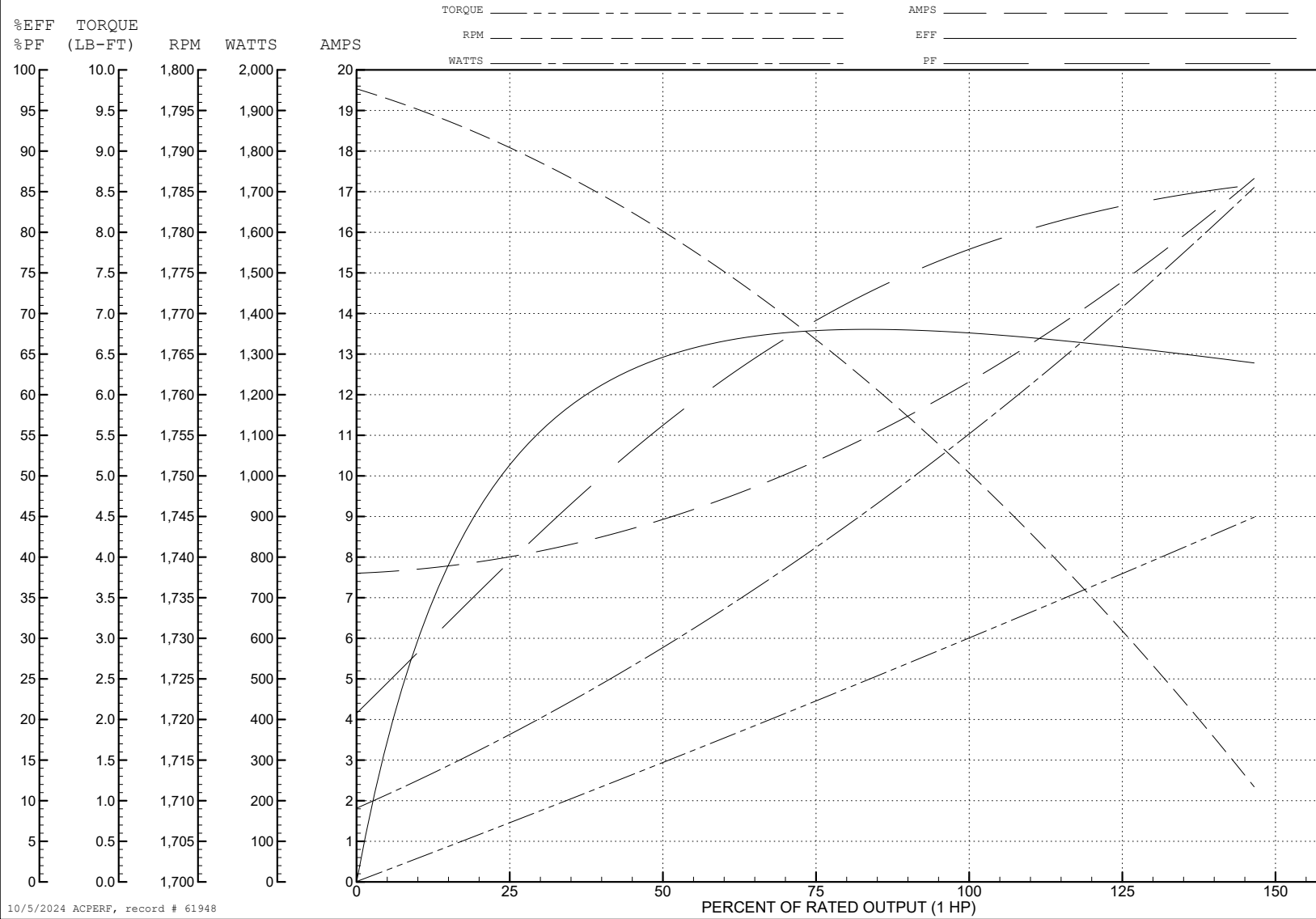
ABB Motors and Mechanical Inc.

WINDING # 35WG0527

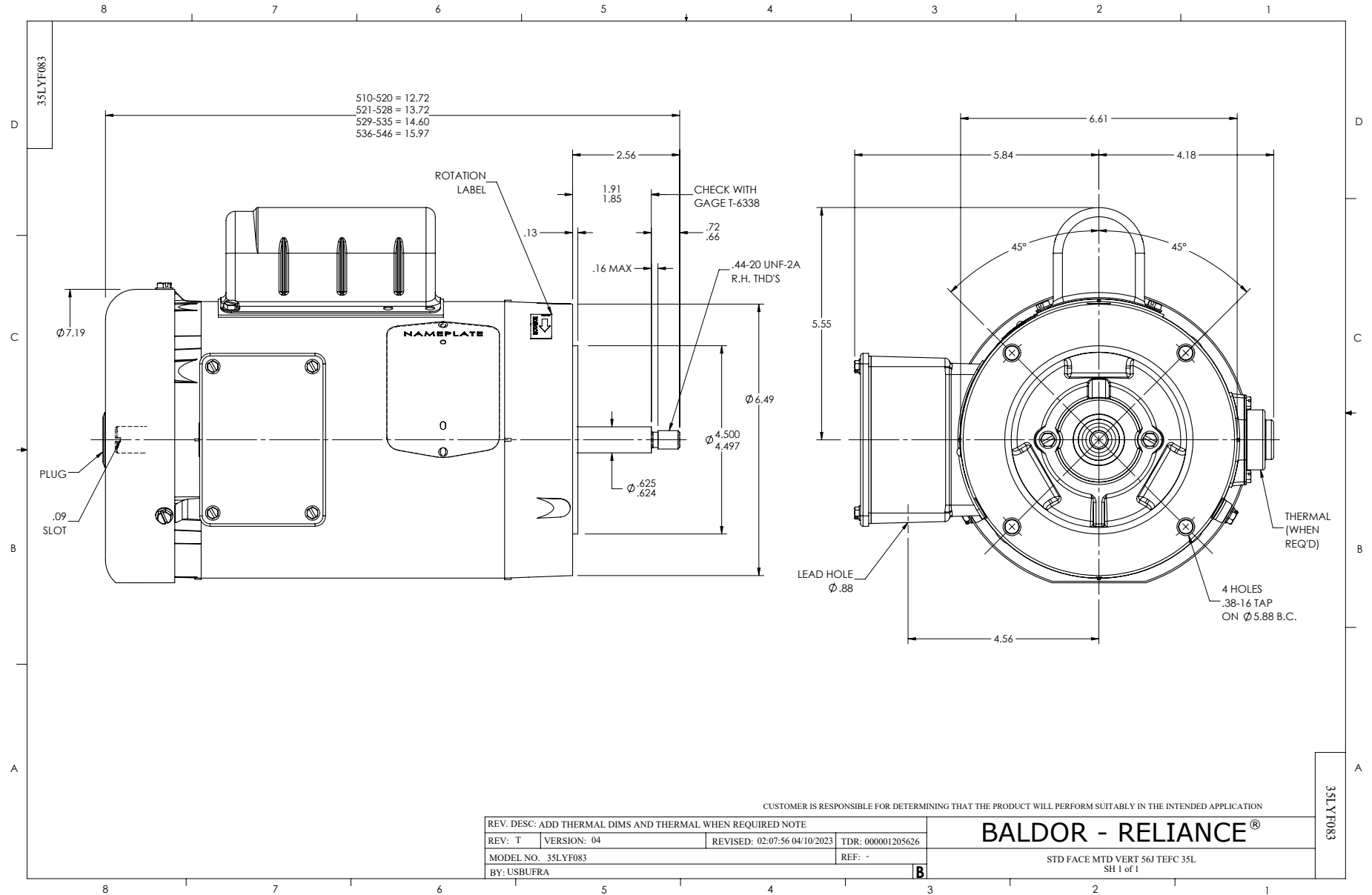
Typical performance - not guaranteed values.

1 HP 1 PH 60 HZ 1725 RPM 115 V 3528L

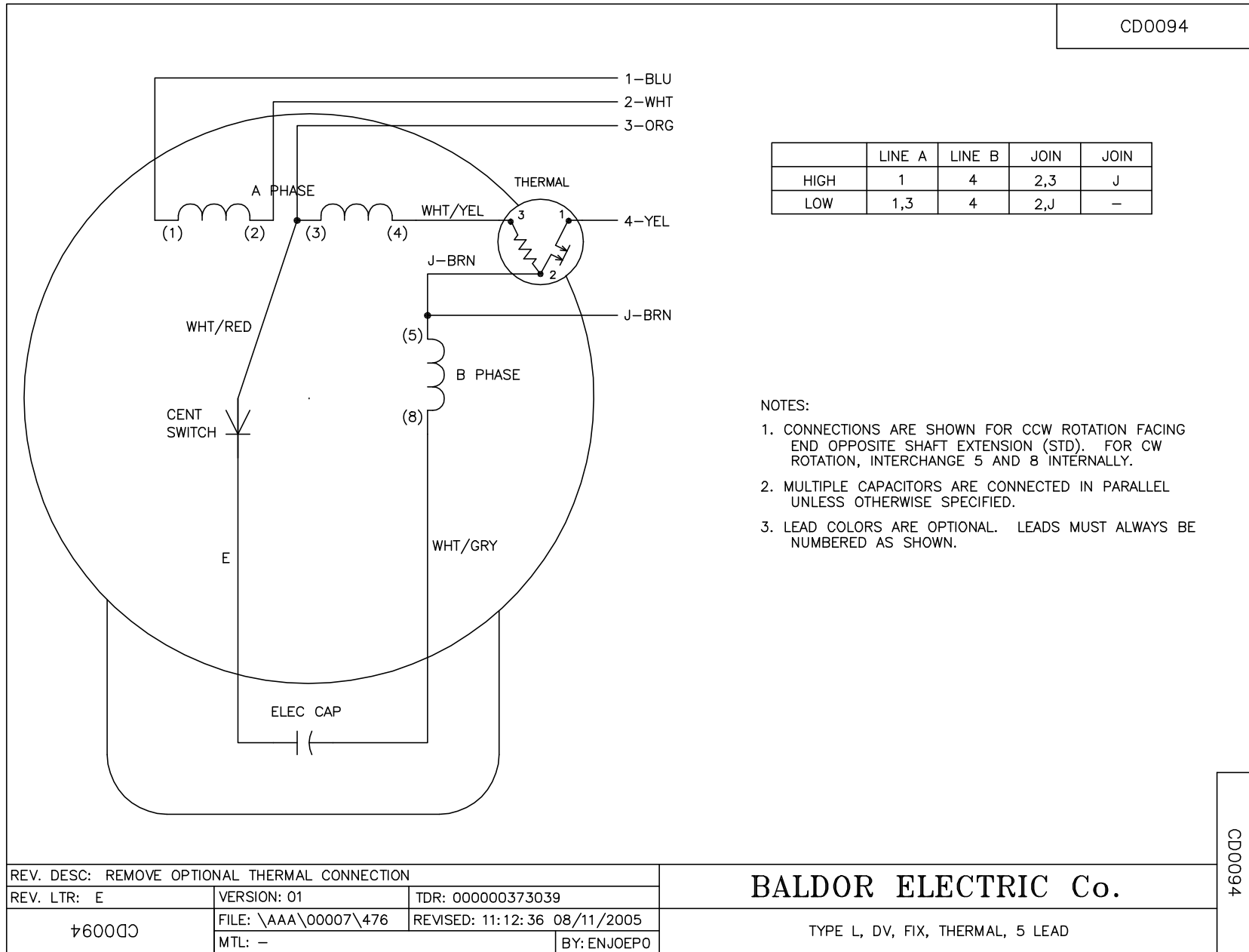
TORQUES (LB-FT): PO=7 PU=3 LR=7.9 LRA=78



10/5/2024 ACPERF, record # 61948



CD0094



REV. DESC: REMOVE OPTIONAL THERMAL CONNECTION		
REV. LTR: E	VERSION: 01	TDR: 000000373039
CD0094	FILE: \AAA\00007\476	REVISED: 11:12:36 08/11/2005
	MTL: -	BY: ENJOEPO

BALDOR ELECTRIC Co.

TYPE L, DV, FIX, THERMAL, 5 LEAD

CD0094