

# ABB BALDOR RELIANCE III

---

## Customer information packet

JL3506A

.75HP, 3450RPM, 1PH, 60HZ, 56J, 3424L, TEFC, F1

Class - None

Division - Not Applicable

**Specifications**

<b>Enclosure</b>	TEFC
<b>Frame</b>	56J
<b>Frame Material</b>	Steel
<b>Frequency</b>	60.00 Hz
<b>Haz Area Class and Group</b>	None
<b>Haz Area Division</b>	Not Applicable
<b>Motor Letter Type</b>	Cap Start, Induction Run
<b>Output @ Frequency</b>	.750 HP @ 60 HZ
<b>Phase</b>	1
<b>Synchronous Speed @ Frequency</b>	3600 RPM @ 60 HZ
<b>Voltage @ Frequency</b>	115.0 V @ 60 HZ 230.0 V @ 60 HZ
<b>Agency Approvals</b>	UR CSA
<b>Ambient Temperature</b>	40 °C
<b>Auxiliary Box</b>	NO AUXILLARY BOX
<b>Auxiliary Box Lead Termination</b>	None
<b>Base Indicator</b>	No Mounting
<b>Bearing Grease Type</b>	Polyrex EM (-20F +300F)
<b>Blower</b>	None
<b>Current @ Voltage</b>	10.800 A @ 115.0 V 5.400 A @ 230.0 V 7.000 A @ 208.0 V
<b>Design Code</b>	N
<b>Drip Cover</b>	No Drip Cover
<b>Duty Rating</b>	CONT
<b>Efficiency @ 100% Load</b>	66.0 %
<b>Electrically Isolated Bearing</b>	Not Electrically Isolated
<b>Feedback Device</b>	NO FEEDBACK
<b>Front Face Code</b>	Standard
<b>Front Shaft Indicator</b>	None
<b>Heater Indicator</b>	No Heater

**Part Detail**

<b>Revision</b>	AB
<b>Type</b>	AC
<b>Mech. spec.</b>	34-3099
<b>Base</b>	
<b>Status</b>	PRD/A
<b>Elec. spec.</b>	34WG3155
<b>Layout</b>	34LY3099
<b>Eff. date</b>	11-06-2024
<b>CD Diagram</b>	CD0094
<b>Poles</b>	02
<b>Leads</b>	4#18,1#14 #4TH Y
<b>Proprietary</b>	False
<b>Created date</b>	01-01-0001

High Voltage Full Load Amps	5.4 a
Insulation Class	B
Inverter Code	Not Inverter
KVA Code	K
Lifting Lugs	No Lifting Lugs
Locked Bearing Indicator	Locked Bearing
Motor Lead Exit	Ko Box
Motor Lead Quantity/Wire Size	4 @ 18 AWG
Motor Lead Termination	Flying Leads
Motor Standards	NEMA
Motor Type	3424L
Mounting Arrangement	F1
Number of Poles	2
Overall Length	12.85 IN
Power Factor	66
Product Family	General Purpose
Pulley End Bearing Type	Ball
Pulley Face Code	C-Face
Pulley Shaft Indicator	Ext Thread
Rodent Screen	None
RoHS Status	ROHS COMPLIANT
Service Factor	1.50
Shaft Diameter	0.625 IN
Shaft Extension Location	Pulley End
Shaft Ground Indicator	No Shaft Grounding
Shaft Rotation	Fixed Opposite Standard
Shaft Slinger Indicator	No Slinger
Speed	3450 rpm
Speed Code	Single Speed
Starting Method	Direct on line
Thermal Device - Bearing	None
Thermal Device - Winding	None
Vibration Sensor Indicator	No Vibration Sensor
Winding Thermal 1	Automatic Thermal Overload

**Winding Thermal 1 Location**

---

**SB**

**Nameplate**

<b>NP1257L</b>									
<b>CAT.NO.</b>	JL3506A								
<b>SPEC.</b>	34-3099-3155G1								
<b>HP</b>	.75								
<b>VOLTS</b>	115/230								
<b>AMP</b>	10.8/5.4								
<b>RPM</b>	3450								
<b>FRAME</b>	56J		<b>HZ</b>	60		<b>PH</b>	1		
<b>SER.F.</b>	1.50	<b>CODE</b>	K	<b>DES</b>	N	<b>CL</b>	B		
<b>NEMA-NOM-EFF</b>	66	<b>PF</b>	66						
<b>RATING</b>	40C AMB-CONT								
<b>CC</b>									
<b>DE</b>	6203	<b>ODE</b>	6203						
<b>ENCL</b>	TEFC	<b>SN</b>							
	SFA 13.4/6.7								

**Accessories**

<b>Part number</b>	<b>Description</b>	<b>Multiplier</b>
34-171	C FACE KIT	A8

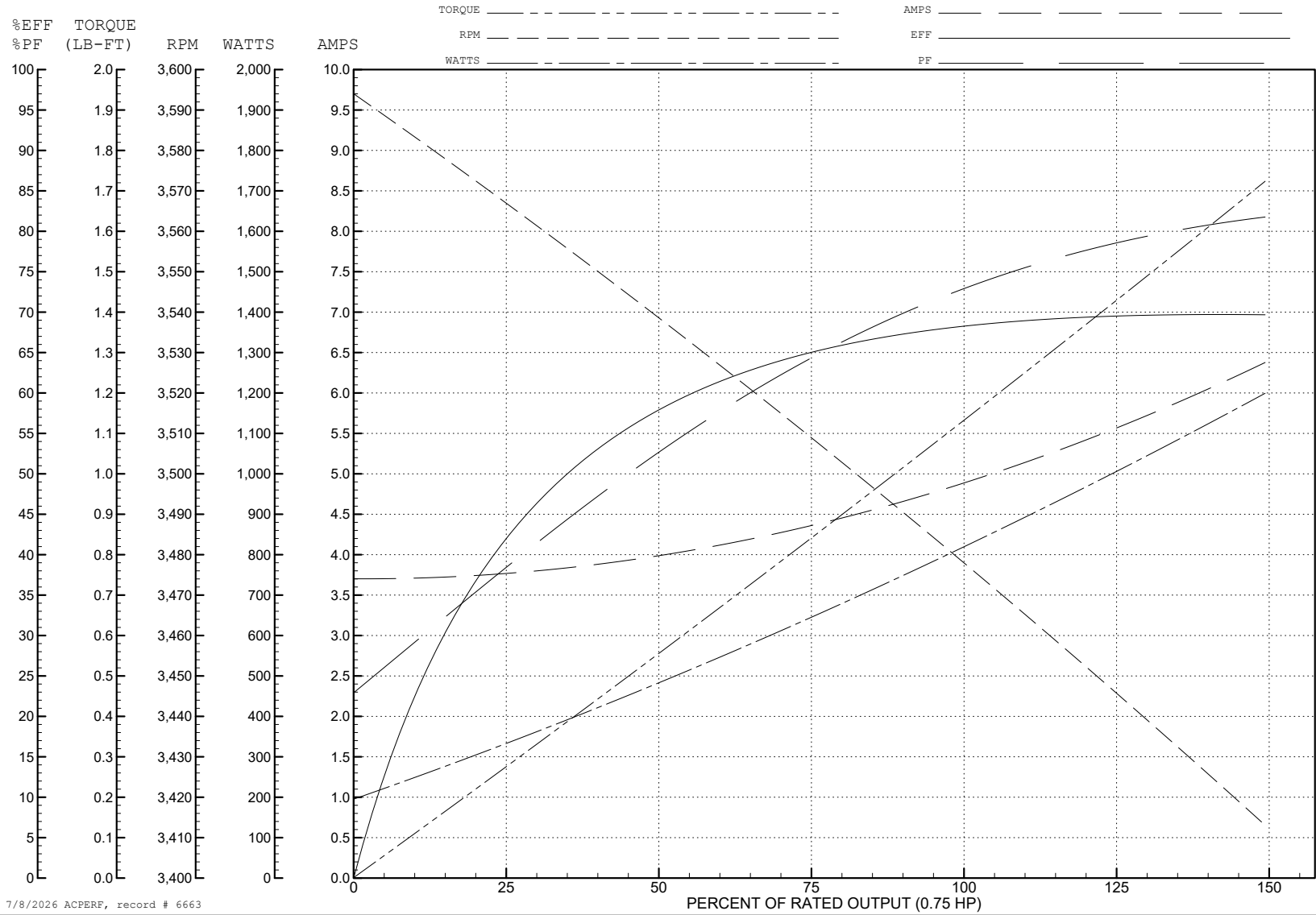
ABB Motors and Mechanical Inc.

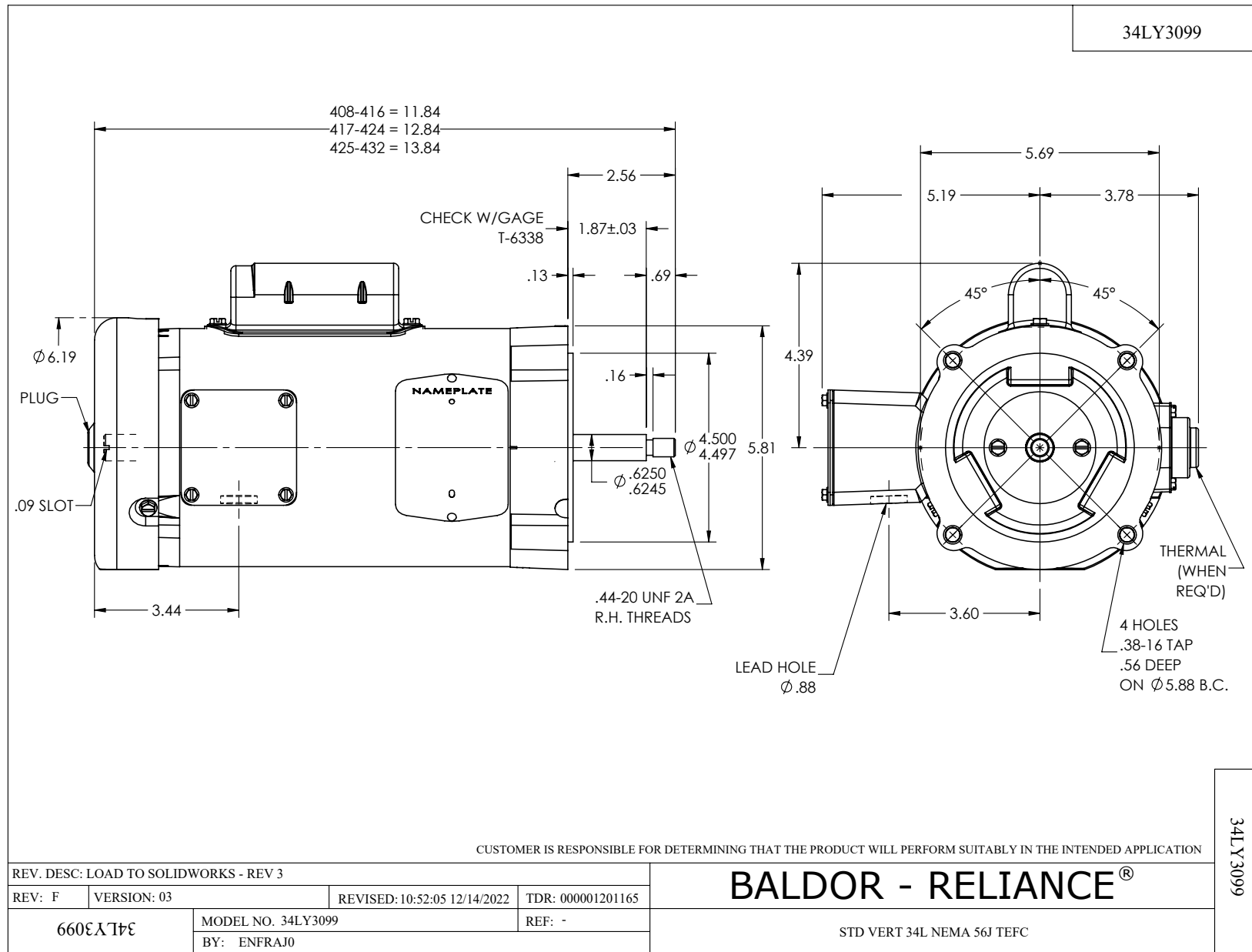
WINDING # 34WG3155

0.75 HP 1 PH 60 HZ 3450 RPM 230 V 3424L

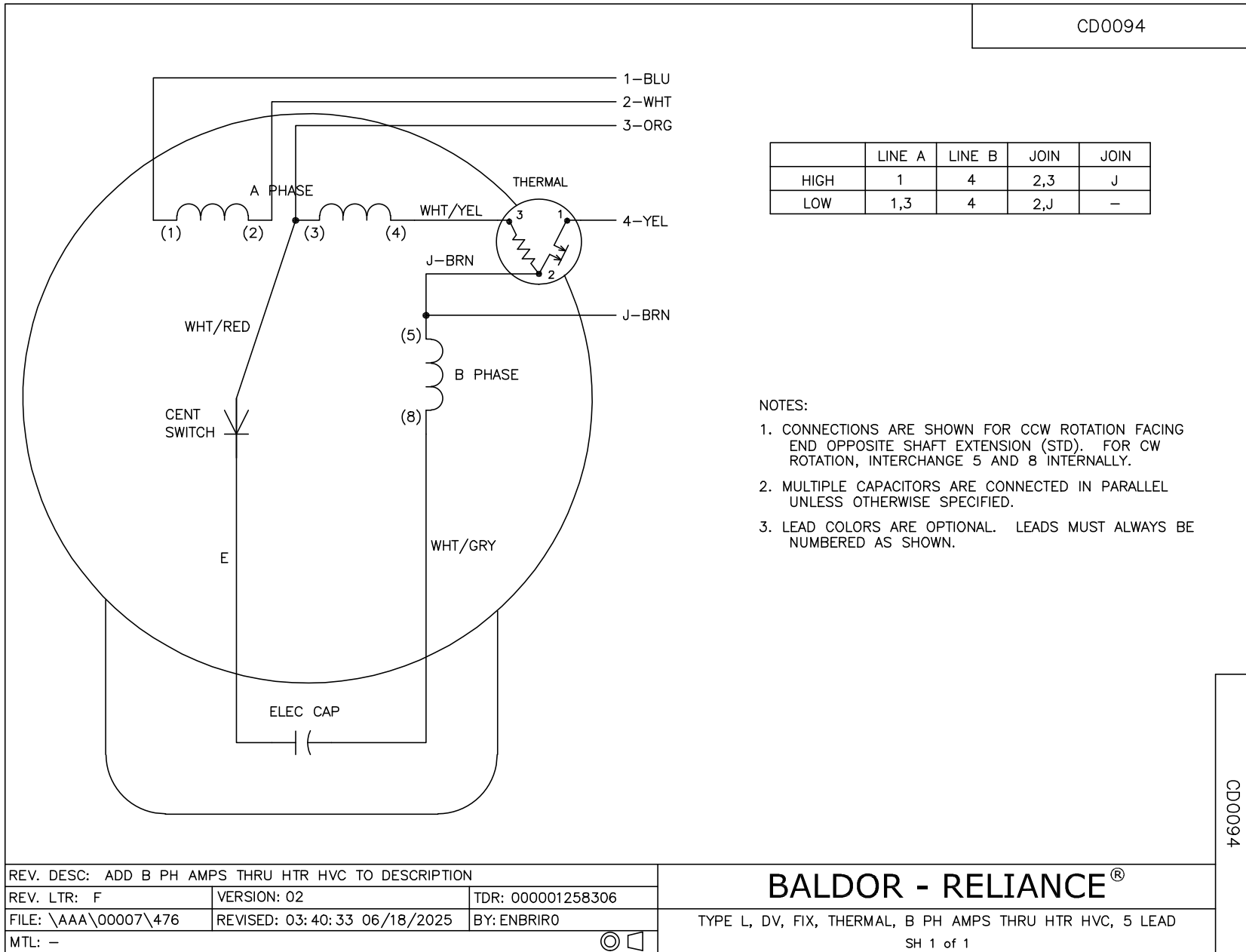
Typical performance - not guaranteed values.

TORQUES (LB-FT): PO=3.98 PU=1.63 LR=2.45 LRA=31.2





CD0094



CD0094

REV. DESC: ADD B PH AMPS THRU HTR HVC TO DESCRIPTION		
REV. LTR: F	VERSION: 02	TDR: 000001258306
FILE: \AAA\00007\476	REVISED: 03:40:33 06/18/2025	BY: ENBRIRO
MTL: -	© □	

**BALDOR - RELIANCE®**

TYPE L, DV, FIX, THERMAL, B PH AMPS THRU HTR HVC, 5 LEAD

SH 1 of 1