

ABB BALDOR RELIANCE III

Customer information packet

JL3504A

.5HP, 1725RPM, 1PH, 60HZ, 56J, 3421L, TEFC, F1

Class - None

Division - Not Applicable

Specifications

Enclosure	TEFC
Frame	56J
Frame Material	Steel
Frequency	60.00 Hz
Haz Area Class and Group	None
Haz Area Division	Not Applicable
Motor Letter Type	Cap Start, Induction Run
Output @ Frequency	.500 HP @ 60 HZ
Phase	1
Synchronous Speed @ Frequency	1800 RPM @ 60 HZ
Voltage @ Frequency	115.0 V @ 60 HZ 230.0 V @ 60 HZ
Agency Approvals	UR CSA
Ambient Temperature	40 °C
Auxiliary Box	NO AUXILLARY BOX
Auxiliary Box Lead Termination	None
Base Indicator	No Mounting
Bearing Grease Type	Polyrex EM (-20F +300F)
Blower	None
Current @ Voltage	3.700 A @ 230.0 V 4.300 A @ 208.0 V 7.400 A @ 115.0 V
Design Code	N
Drip Cover	No Drip Cover
Duty Rating	CONT
Efficiency @ 100% Load	68.0 %
Electrically Isolated Bearing	Not Electrically Isolated
Feedback Device	NO FEEDBACK
Front Face Code	Standard
Front Shaft Indicator	None
Heater Indicator	No Heater

Part Detail

Revision	AB
Type	AC
Mech. spec.	34-3099
Base	
Status	PRD/A
Elec. spec.	34WG5593
Layout	34LY3099
Eff. date	11-06-2024
CD Diagram	CD0094
Poles	04
Leads	4#18,1#16 #4TH Y
Proprietary	False
Created date	01-01-0001

High Voltage Full Load Amps	3.7 a
Insulation Class	B
Inverter Code	Not Inverter
KVA Code	J
Lifting Lugs	No Lifting Lugs
Locked Bearing Indicator	Locked Bearing
Motor Lead Exit	Ko Box
Motor Lead Quantity/Wire Size	4 @ 18 AWG
Motor Lead Termination	Flying Leads
Motor Standards	NEMA
Motor Type	3421L
Mounting Arrangement	F1
Number of Poles	4
Overall Length	12.85 IN
Power Factor	66
Product Family	General Purpose
Pulley End Bearing Type	Ball
Pulley Face Code	C-Face
Pulley Shaft Indicator	Ext Thread
Rodent Screen	None
RoHS Status	ROHS COMPLIANT
Service Factor	1.25
Shaft Diameter	0.625 IN
Shaft Extension Location	Pulley End
Shaft Ground Indicator	No Shaft Grounding
Shaft Rotation	Fixed Opposite Standard
Shaft Slinger Indicator	No Slinger
Speed	1725 rpm
Speed Code	Single Speed
Starting Method	Direct on line
Thermal Device - Bearing	None
Thermal Device - Winding	None
Vibration Sensor Indicator	No Vibration Sensor
Winding Thermal 1	Automatic Thermal Overload

Winding Thermal 1 Location

SB

Nameplate

NP1257L	
CAT.NO.	JL3504A
SPEC.	34-3099-5593
HP	.5
VOLTS	115/230
AMP	7.4/3.7
RPM	1725
FRAME	56J HZ 60 PH 1
SER.F.	1.25 CODE J DES N CL B
NEMA-NOM-EFF	68 PF 66
RATING	40C AMB-CONT
CC	
DE	6203 ODE 6203
ENCL	TEFC SN
	SFA 8.2/4.1

Accessories

Part number	Description	Multiplier
34-171	C FACE KIT	A8

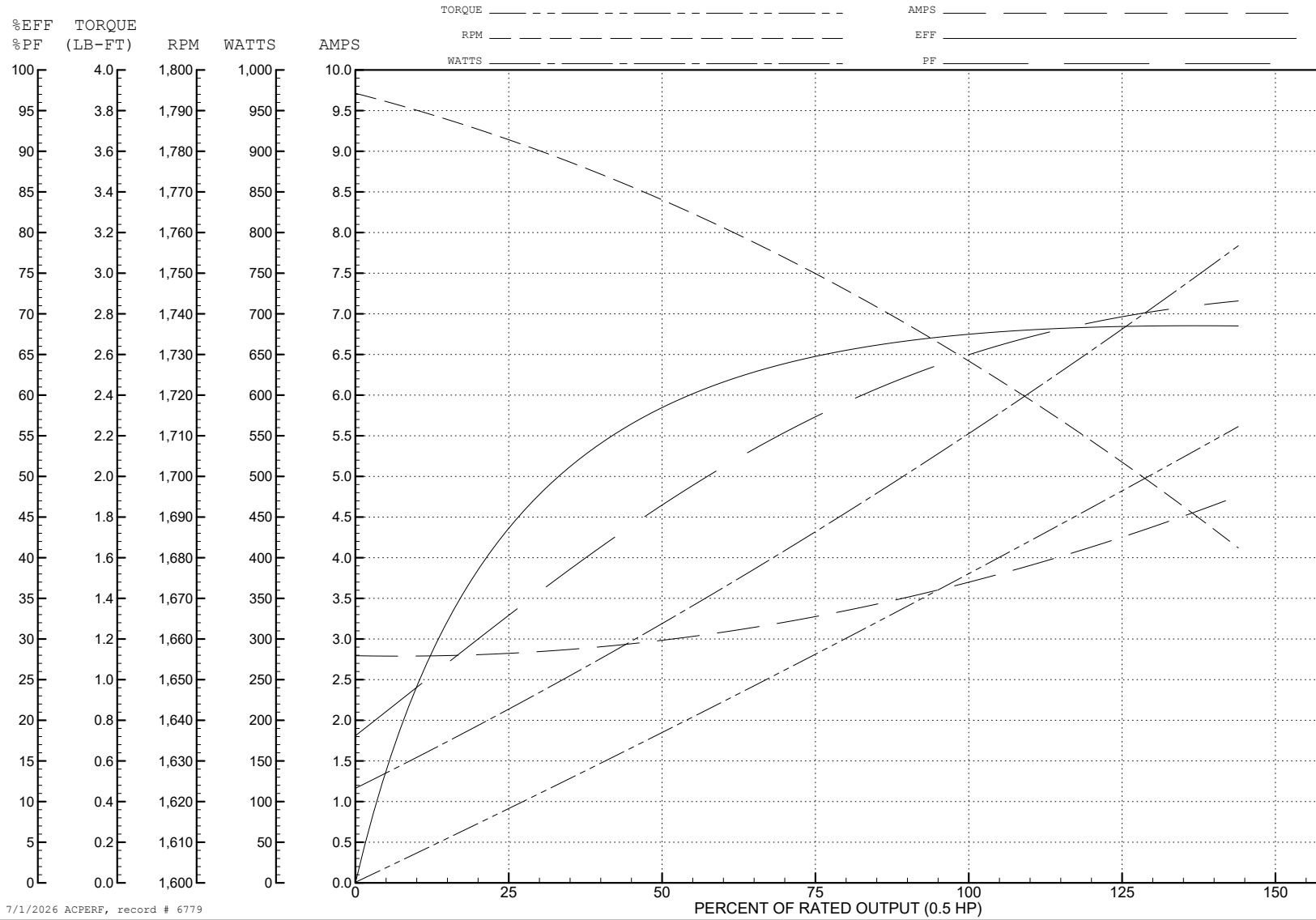
ABB Motors and Mechanical Inc.

WINDING # 34WG5593

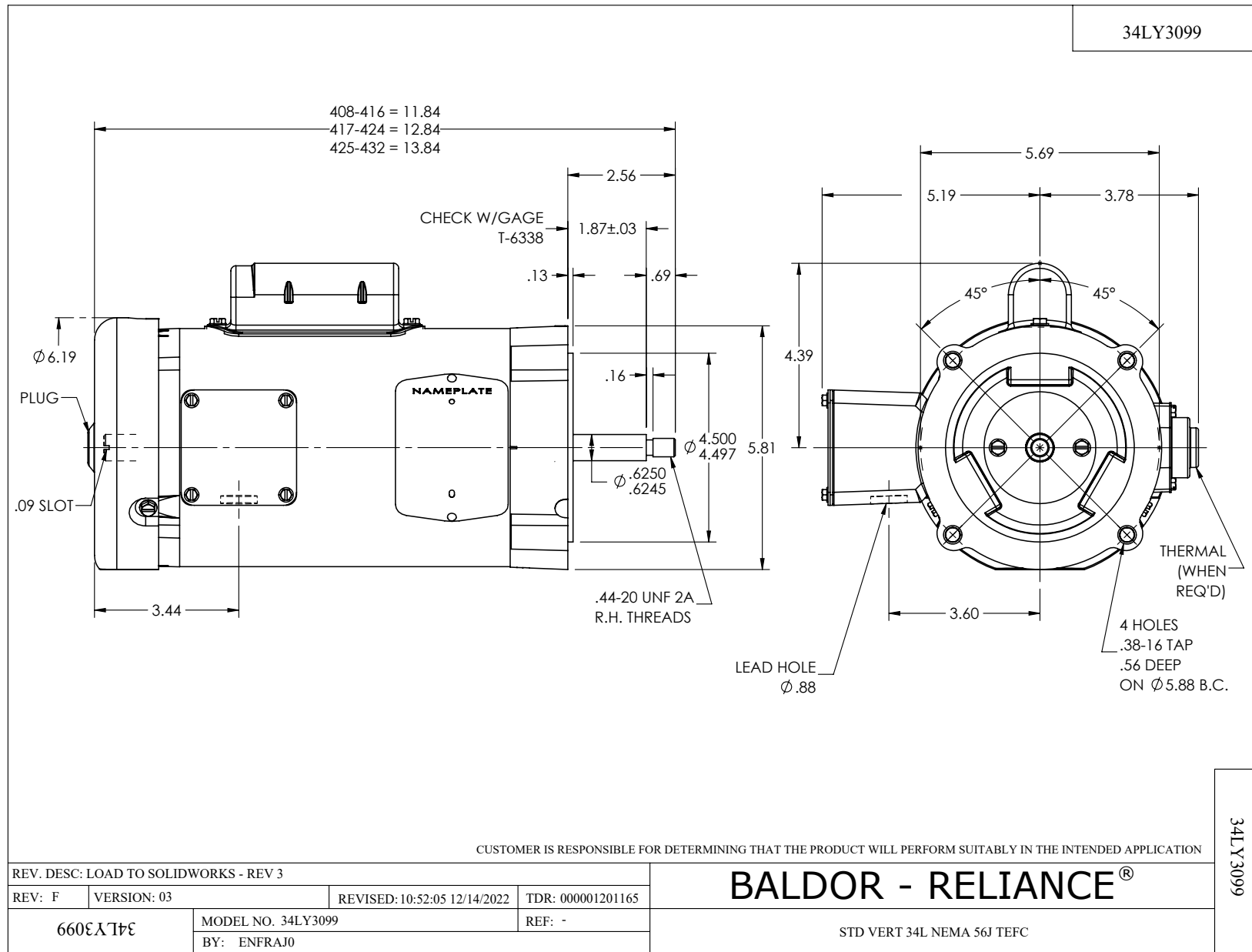
0.5 HP 1 PH 60 HZ 1725 RPM 230 V 3421L

Typical performance - not guaranteed values.

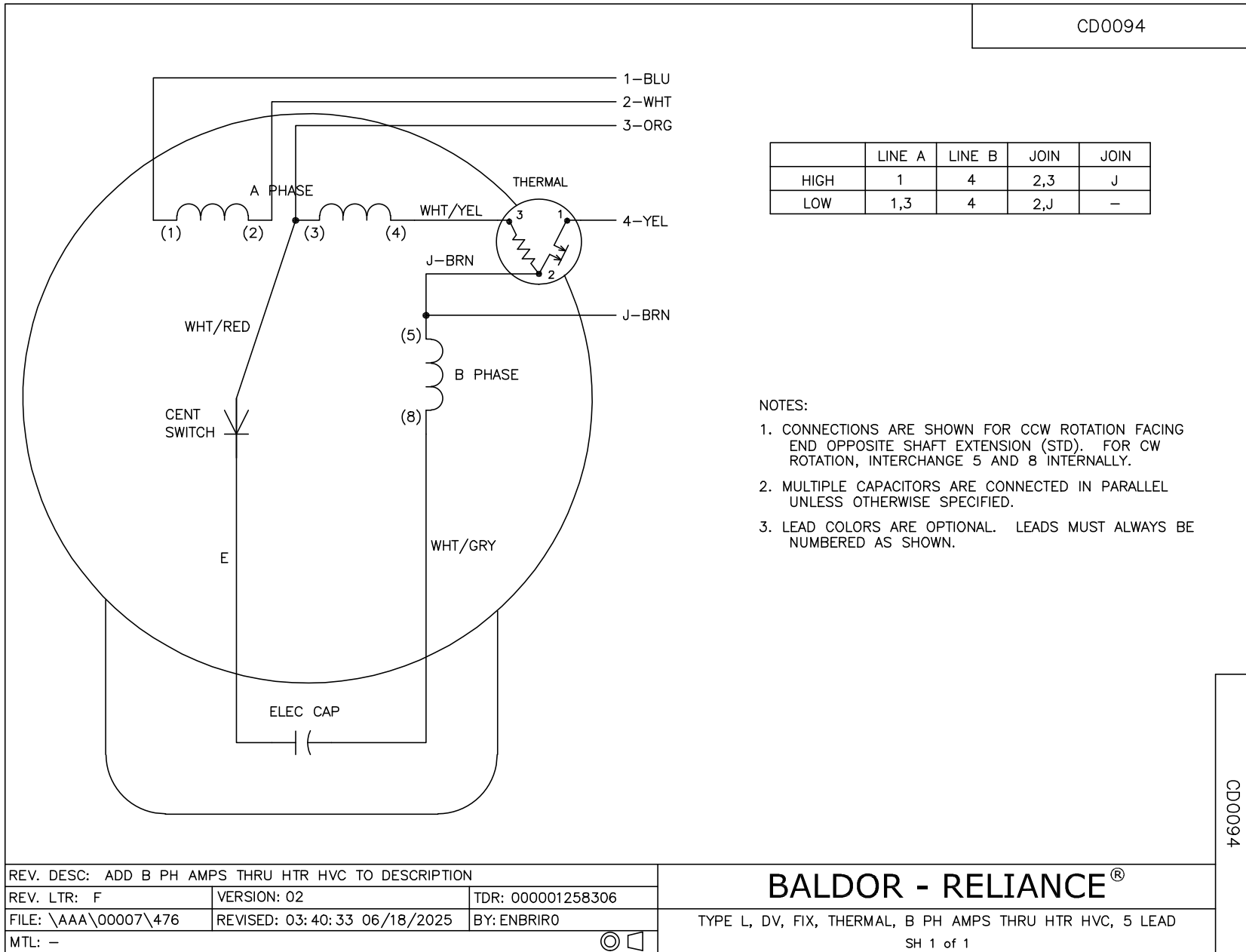
TORQUES (LB-FT): PO=4.13 PU=3.6 LR=4.65 LRA=16.5



7/1/2026 ACPERF, record # 6779



CD0094



CD0094

REV. DESC: ADD B PH AMPS THRU HTR HVC TO DESCRIPTION		
REV. LTR: F	VERSION: 02	TDR: 000001258306
FILE: \AAA\00007\476	REVISED: 03:40:33 06/18/2025	BY: ENBRIRO
MTL: -	© □	

BALDOR - RELIANCE®

TYPE L, DV, FIX, THERMAL, B PH AMPS THRU HTR HVC, 5 LEAD
SH 1 of 1