

ABB BALDOR RELIANCE III

Customer information packet

JL1323A

3HP, 3450RPM, 1PH, 60HZ, 56J, 3535LC, OPEN, F1

Class - None

Division - Not Applicable

Specifications

Enclosure	OPEN
Frame	56J
Frame Material	Steel
Frequency	60.00 Hz
Haz Area Class and Group	None
Haz Area Division	Not Applicable
Motor Letter Type	Cap Start, Cap Run
Output @ Frequency	3.000 HP @ 60 HZ
Phase	1
Synchronous Speed @ Frequency	3600 RPM @ 60 HZ
Voltage @ Frequency	230.0 V @ 60 HZ
Agency Approvals	UR CSA
Ambient Temperature	40 °C
Auxiliary Box	NO AUXILLARY BOX
Auxiliary Box Lead Termination	None
Base Indicator	No Mounting
Bearing Grease Type	Polyrex EM (-20F +300F)
Blower	None
Current @ Voltage	13.000 A @ 230.0 V
Design Code	L
Drip Cover	Drip Cover
Duty Rating	CONT
Efficiency @ 100% Load	82.5 %
Electrically Isolated Bearing	Not Electrically Isolated
Feedback Device	NO FEEDBACK
Front Face Code	Terminal Panel
Front Shaft Indicator	None
Heater Indicator	No Heater
High Voltage Full Load Amps	13.0 a
Insulation Class	F
Inverter Code	Not Inverter

Part Detail

Revision	BN
Type	AC
Mech. spec.	35H992
Base	
Status	PRD/A
Elec. spec.	35WGY105
Layout	35LYH992
Eff. date	10-08-2024
CD Diagram	CD0661
Poles	02
Leads	2#14 A PH,2#18 B&J
Proprietary	False
Created date	06-22-2007

KVA Code	K
Lifting Lugs	No Lifting Lugs
Locked Bearing Indicator	Locked Bearing
Motor Lead Exit	Terminal Panel
Motor Lead Quantity/Wire Size	2 @ 14 AWG, A PH
Motor Lead Termination	None
Motor Standards	NEMA
Motor Type	3535LC
Mounting Arrangement	F1
Number of Poles	2
Overall Length	14.13 IN
Power Factor	93
Product Family	General Purpose
Pulley End Bearing Type	Ball
Pulley Face Code	C-Face
Pulley Shaft Indicator	Ext Thread
Rodent Screen	None
RoHS Status	ROHS COMPLIANT
Service Factor	1.15
Shaft Diameter	0.625 IN
Shaft Extension Location	Pulley End
Shaft Ground Indicator	No Shaft Grounding
Shaft Rotation	Fixed Opposite Standard
Shaft Slinger Indicator	No Slinger
Speed	3450 rpm
Speed Code	Single Speed
Starting Method	Direct on line
Thermal Device - Bearing	None
Thermal Device - Winding	Do Not Use Eve-Not Valid
Vibration Sensor Indicator	No Vibration Sensor
Winding Thermal 1	Automatic Thermal Overload
Winding Thermal 1 Location	SB
Winding Thermal 2	None

Nameplate

NP1257L									
CAT.NO.	JL1323A								
SPEC.	35H992Y105								
HP	3								
VOLTS	230								
AMP	13								
RPM	3450								
FRAME	56J		HZ	60		PH	1		
SER.F.	1.15	CODE	K	DES	L	CL	F		
NEMA-NOM-EFF	82.5	PF	93						
RATING	40C AMB-CONT								
CC									
DE	6205	ODE	6203						
ENCL	OPEN	SN							

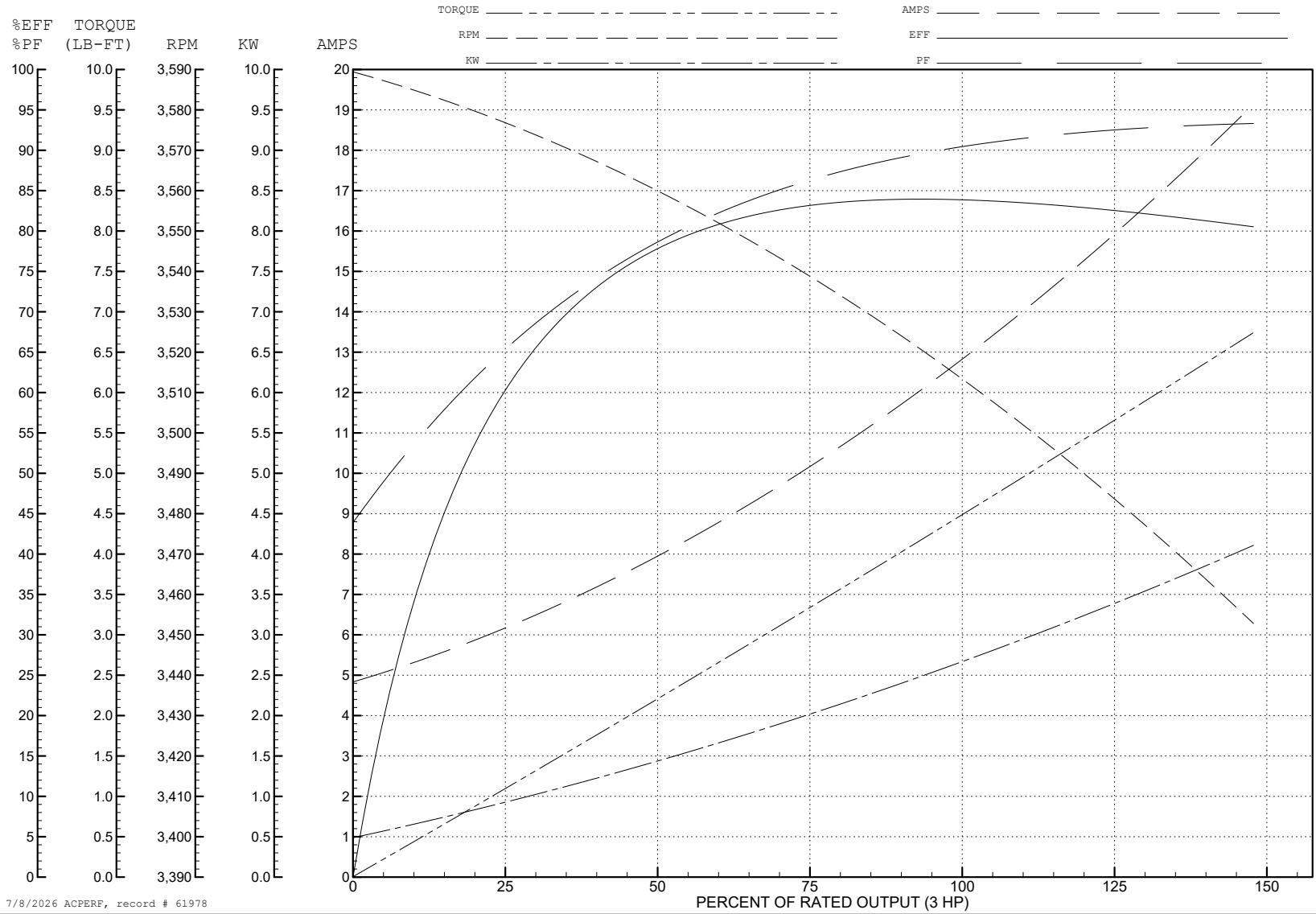
ABB Motors and Mechanical Inc.

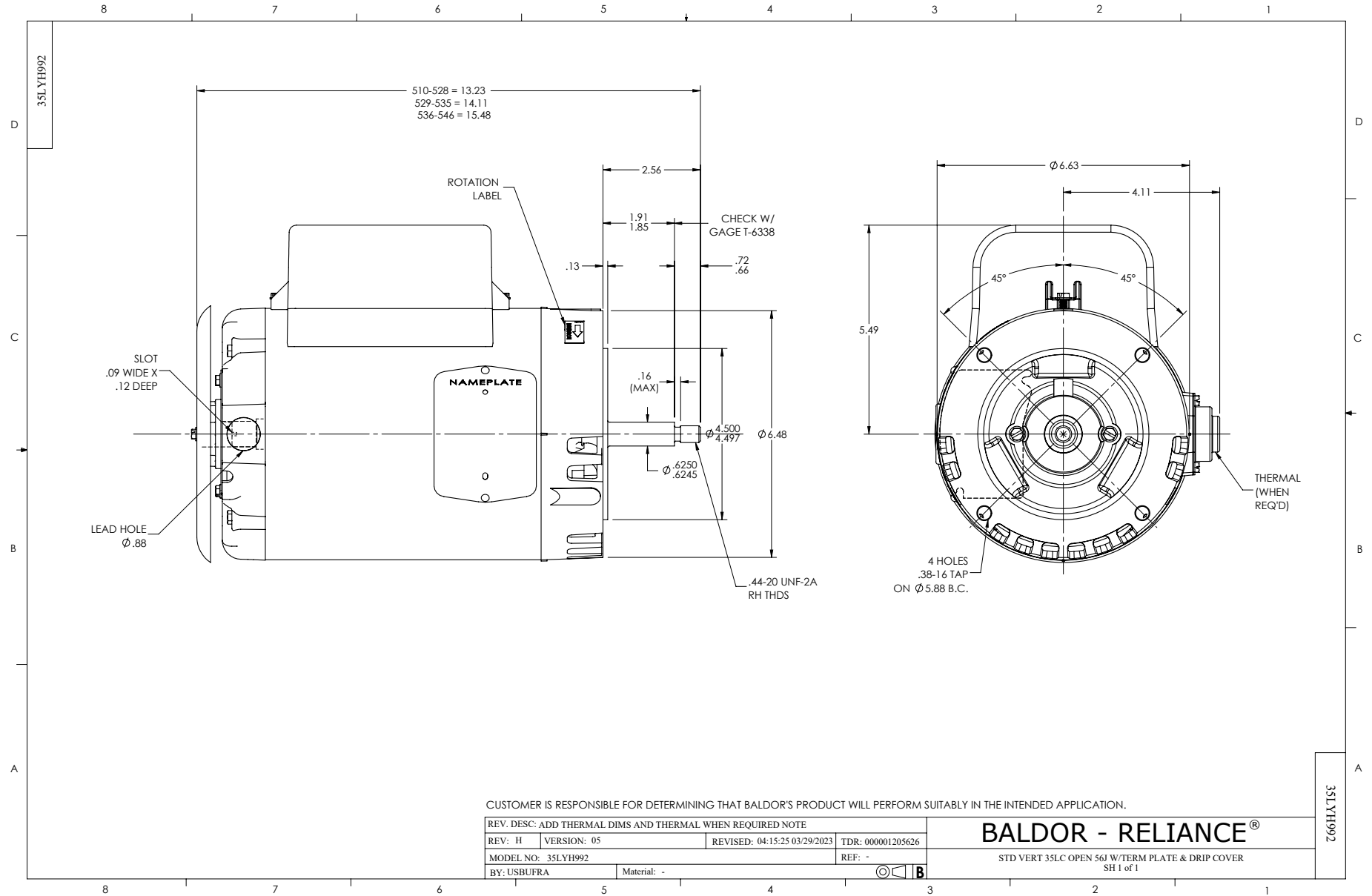
WINDING # 35WGY105

3 HP 1 PH 60 HZ 3450 RPM 230 V 3535LC

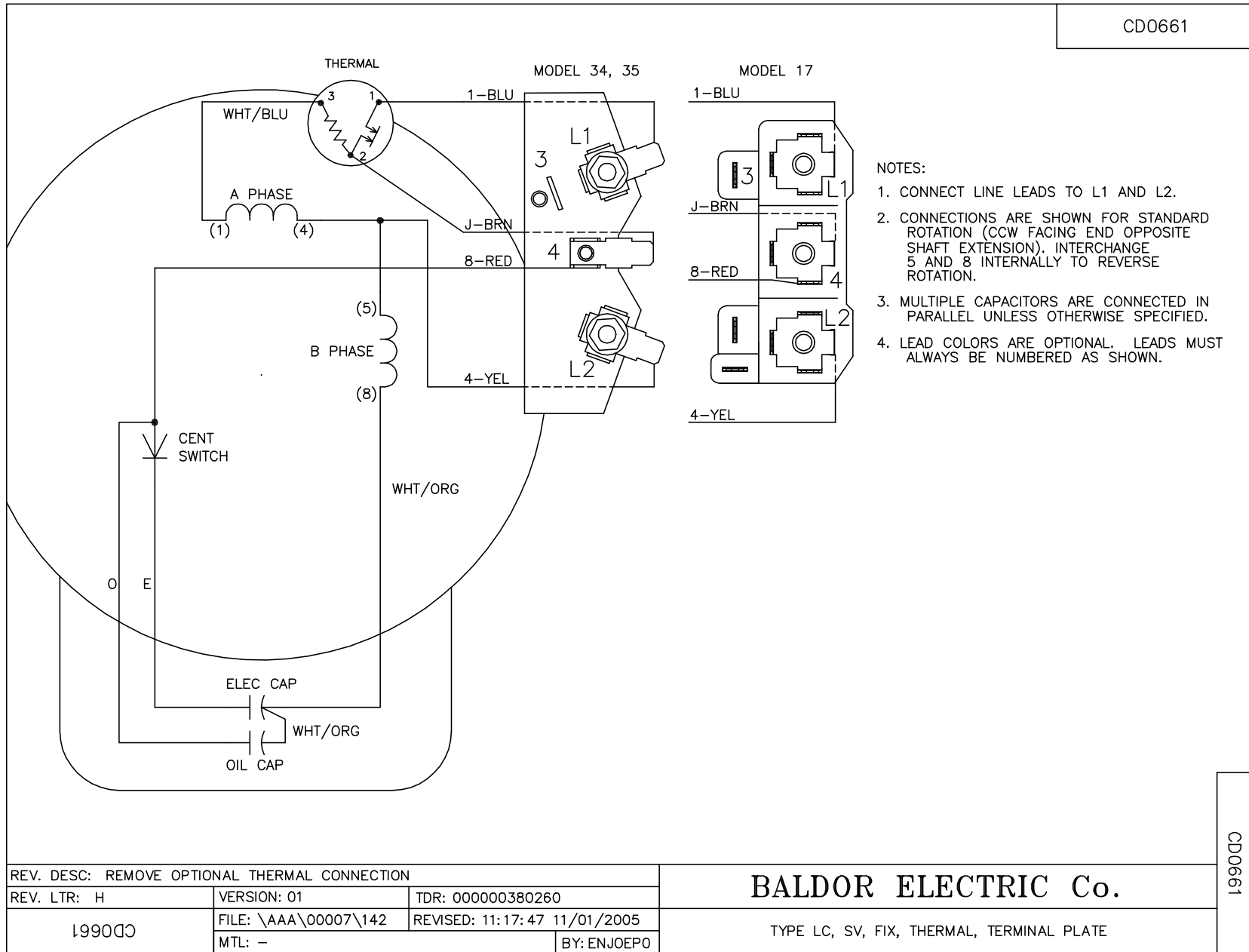
Typical performance - not guaranteed values.

TORQUES (LB-FT): PO=15.5 PU=13 LR=13 LRA=108





CD0661



REV. DESC: REMOVE OPTIONAL THERMAL CONNECTION		
REV. LTR: H	VERSION: 01	TDR: 000000380260
1990DC	FILE: \AAA\00007\142	REVISED: 11:17:47 11/01/2005
	MTL: -	BY: ENJOEPO

BALDOR ELECTRIC Co.

TYPE LC, SV, FIX, THERMAL, TERMINAL PLATE

CD0661