

ABB BALDOR RELIANCE III

Customer information packet

JL1313A

1.5HP, 3450RPM, 1PH, 60HZ, 56J, 3432LC, OPEN

Class - None

Division - Not Applicable

Specifications

Enclosure	OPEN
Frame	56J
Frame Material	Steel
Frequency	60.00 Hz
Haz Area Class and Group	None
Haz Area Division	Not Applicable
Motor Letter Type	Cap Start, Cap Run
Output @ Frequency	1.500 HP @ 60 HZ
Phase	1
Synchronous Speed @ Frequency	3600 RPM @ 60 HZ
Voltage @ Frequency	115.0 V @ 60 HZ 230.0 V @ 60 HZ
Agency Approvals	CSA UR
Ambient Temperature	40 °C
Auxiliary Box	NO AUXILLARY BOX
Auxiliary Box Lead Termination	None
Base Indicator	No Mounting
Bearing Grease Type	Polyrex EM (-20F +300F)
Blower	None
Current @ Voltage	13.000 A @ 115.0 V 6.500 A @ 230.0 V
Drip Cover	Drip Cover
Duty Rating	CONT
Efficiency @ 100% Load	78.5 %
Electrically Isolated Bearing	Not Electrically Isolated
Feedback Device	NO FEEDBACK
Front Face Code	Drip Cover Mounting
Front Shaft Indicator	None
Heater Indicator	No Heater
High Voltage Full Load Amps	6.5 a
Insulation Class	B

Part Detail

Revision	AE
Type	AC
Mech. spec.	34F531
Base	
Status	PRD/A
Elec. spec.	34WGX598
Layout	34LYF531
Eff. date	05-08-2026
CD Diagram	CD0769
Poles	02
Leads	4#16 A&J,1#18 B PH,1#14 #1TH
Proprietary	False
Created date	01-01-0001

Inverter Code	Not Inverter
KVA Code	H
Lifting Lugs	No Lifting Lugs
Locked Bearing Indicator	Locked Bearing
Motor Lead Exit	Terminal Panel Or Lead Hole
Motor Lead Quantity/Wire Size	4 @ 16 AWG, A&J
Motor Lead Termination	Flying Leads With QC
Motor Standards	NEMA
Motor Type	3432LC
Mounting Arrangement	F1
Number of Poles	2
Overall Length	13.89 IN
Power Factor	95
Product Family	General Purpose
Pulley End Bearing Type	Ball
Pulley Face Code	C-Face
Pulley Shaft Indicator	Ext Thread
Rodent Screen	None
RoHS Status	ROHS COMPLIANT
Service Factor	1.30
Shaft Diameter	0.625 IN
Shaft Extension Location	Pulley End
Shaft Ground Indicator	No Shaft Grounding
Shaft Rotation	Fixed Opposite Standard
Shaft Slinger Indicator	No Slinger
Speed	3450 rpm
Speed Code	Single Speed
Starting Method	Direct on line
Thermal Device - Bearing	None
Thermal Device - Winding	None
Vibration Sensor Indicator	No Vibration Sensor
Winding Thermal 1	Automatic Thermal Overload
Winding Thermal 1 Location	SB

Nameplate

NP1257L									
CAT.NO.	JL1313A								
SPEC.	34F531X598								
HP	1.5								
VOLTS	115/230								
AMP	13/6.5								
RPM	3450								
FRAME	56J		HZ	60		PH	1		
SER.F.	1.30	CODE	H	DES	-	CL	B		
NEMA-NOM-EFF	78.5	PF	95						
RATING	40C AMB-CONT								
CC									
DE	6203	ODE	6203						
ENCL	OPEN	SN							
	SFA 17/8.5								

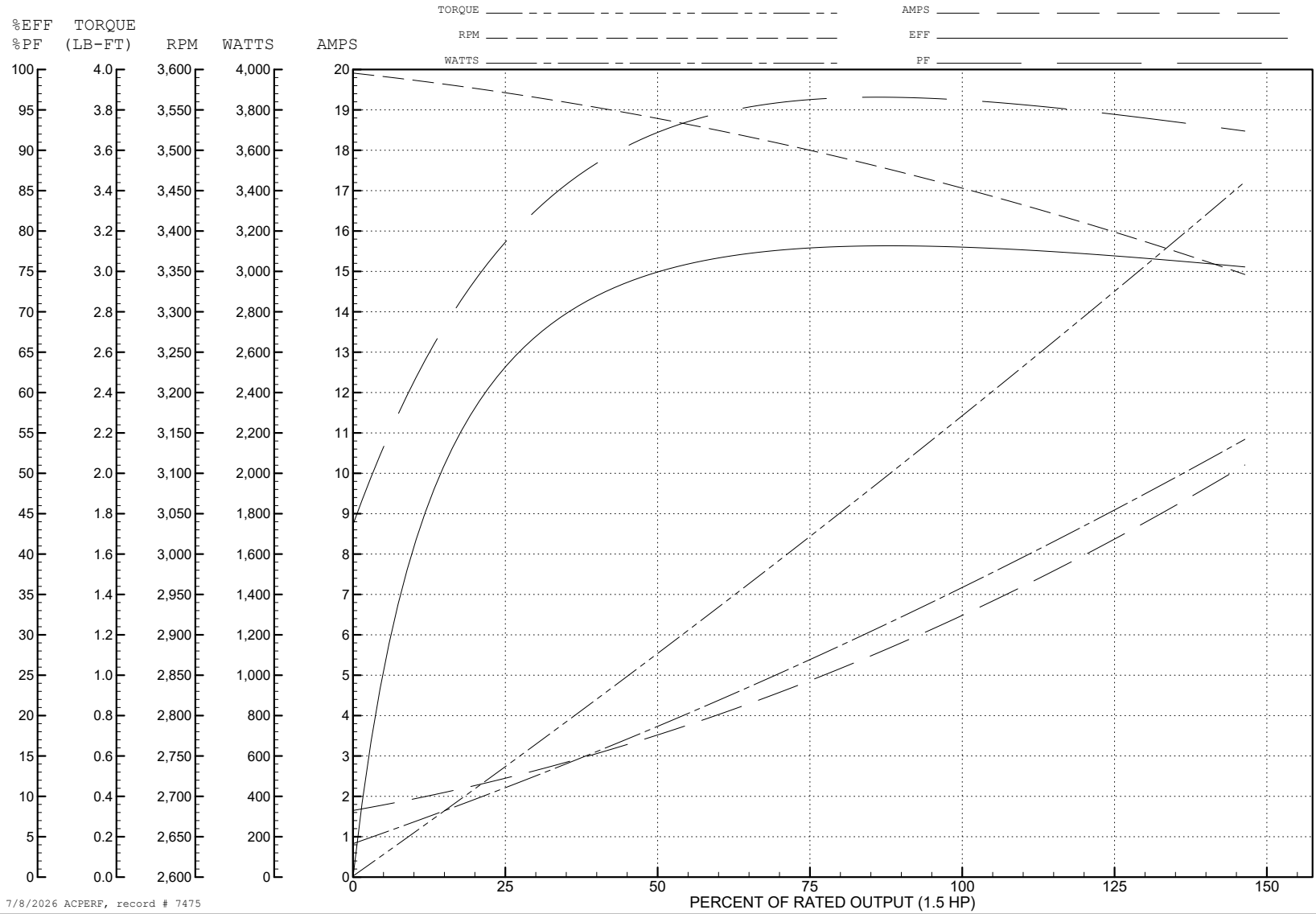
ABB Motors and Mechanical Inc.

WINDING # 34WG598

Typical performance - not guaranteed values.

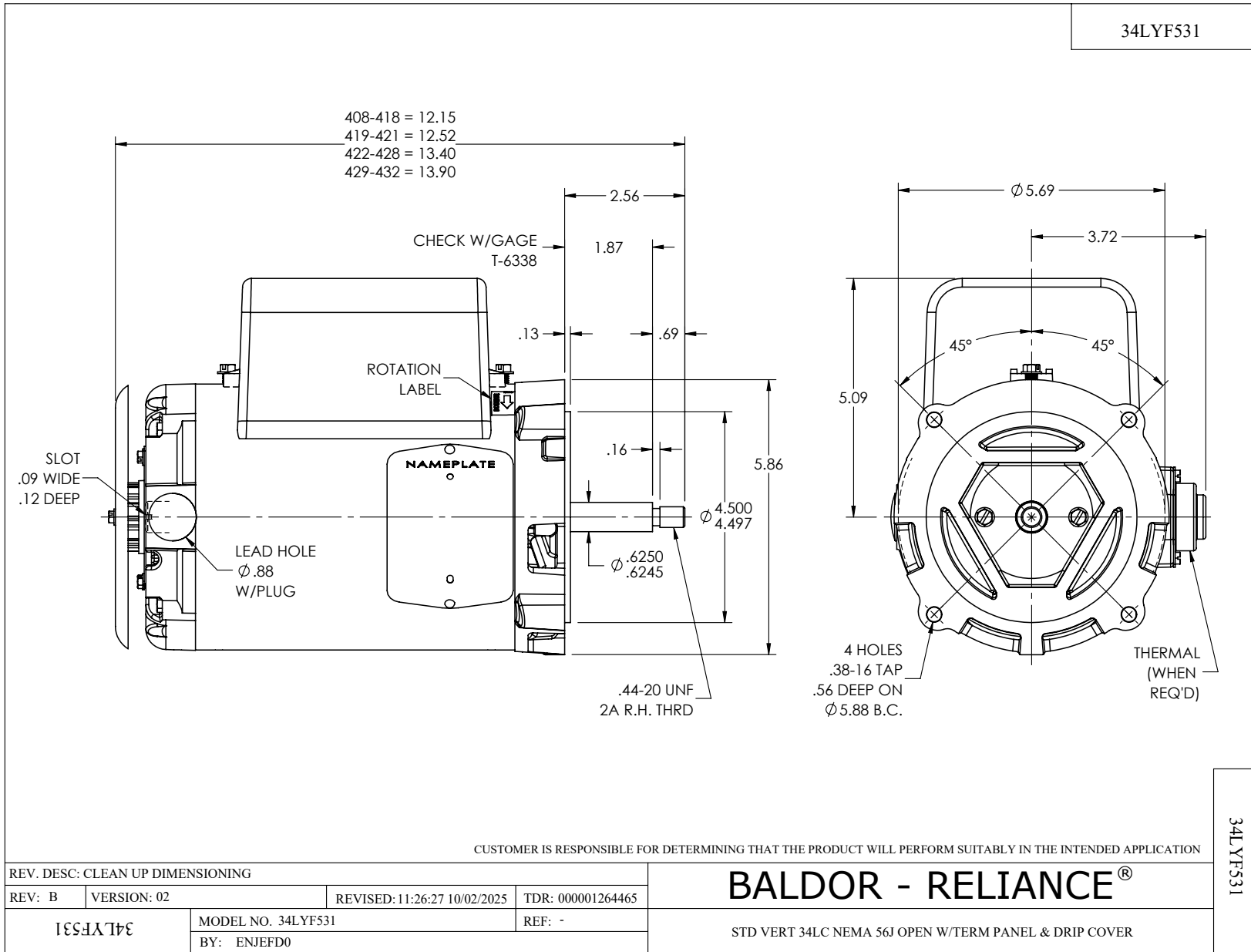
1.5 HP 1 PH 60 HZ 3450 RPM 230 V 3432LC

TORQUES (LB-FT): PO=6.2 PU=5 LR=6.7 LRA=43.5

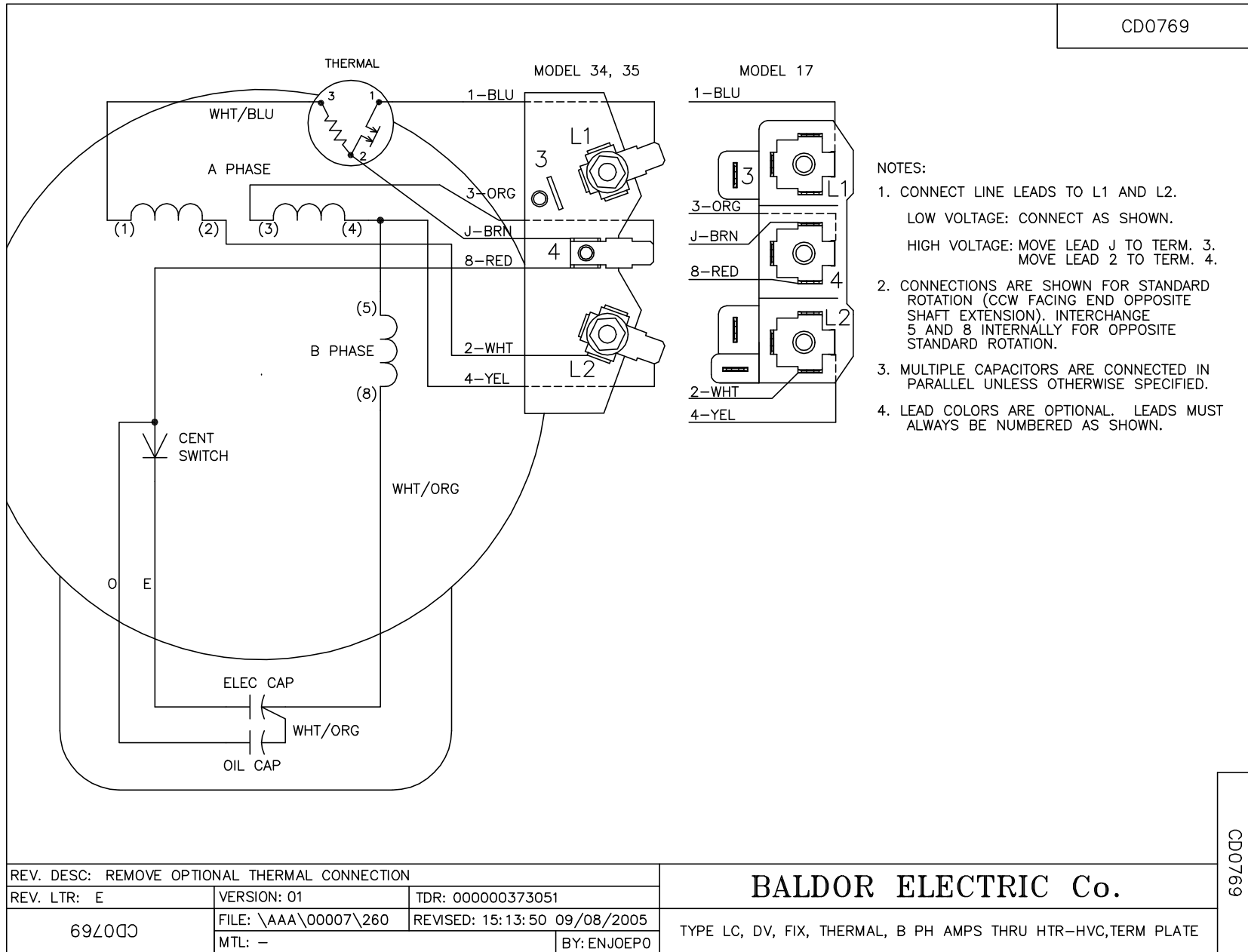


7/8/2026 ACPERF, record # 7475

34LYF531



CD0769



CD0769