

ABB BALDOR RELIANCE III

Customer information packet

JL1307A

.75HP, 1725RPM, 1PH, 60HZ, 56J, 3428L, OPEN, F1

Class - None

Division - Not Applicable

Specifications

Enclosure	OPEN
Frame	56J
Frame Material	Steel
Frequency	60.00 Hz
Haz Area Class and Group	None
Haz Area Division	Not Applicable
Motor Letter Type	Cap Start, Induction Run
Output @ Frequency	.750 HP @ 60 HZ
Phase	1
Synchronous Speed @ Frequency	1800 RPM @ 60 HZ
Voltage @ Frequency	115.0 V @ 60 HZ 230.0 V @ 60 HZ
Agency Approvals	UR CSA
Ambient Temperature	40 °C
Auxiliary Box	NO AUXILLARY BOX
Auxiliary Box Lead Termination	None
Base Indicator	No Mounting
Bearing Grease Type	Polyrex EM (-20F +300F)
Blower	None
Current @ Voltage	10.200 A @ 115.0 V 5.100 A @ 230.0 V 6.000 A @ 208.0 V
Design Code	N
Drip Cover	Drip Cover
Duty Rating	CONT
Efficiency @ 100% Load	68.0 %
Electrically Isolated Bearing	Not Electrically Isolated
Feedback Device	NO FEEDBACK
Front Face Code	Drip Cover Mounting
Front Shaft Indicator	None
Heater Indicator	No Heater

Part Detail

Revision	AL
Type	AC
Mech. spec.	34F156
Base	
Status	PRD/A
Elec. spec.	34WGW169
Layout	34LYF156
Eff. date	02-25-2025
CD Diagram	CD0203
Poles	04
Leads	5#18,1#14 #1TH
Proprietary	False
Created date	01-01-0001

High Voltage Full Load Amps	5.1 a
Insulation Class	B
Inverter Code	Not Inverter
KVA Code	K
Lifting Lugs	No Lifting Lugs
Locked Bearing Indicator	Locked Bearing
Motor Lead Exit	Terminal Panel Or Lead Hole
Motor Lead Quantity/Wire Size	5 @ 18 AWG
Motor Lead Termination	Flying Leads
Motor Standards	NEMA
Motor Type	3428L
Mounting Arrangement	F1
Number of Poles	4
Overall Length	13.89 IN
Power Factor	68
Product Family	General Purpose
Pulley End Bearing Type	Ball
Pulley Face Code	C-Face
Pulley Shaft Indicator	Ext Thread
Rodent Screen	None
RoHS Status	ROHS COMPLIANT
Service Factor	1.25
Shaft Diameter	0.625 IN
Shaft Extension Location	Pulley End
Shaft Ground Indicator	No Shaft Grounding
Shaft Rotation	Fixed Opposite Standard
Shaft Slinger Indicator	No Slinger
Speed	1725 rpm
Speed Code	Single Speed
Starting Method	Direct on line
Thermal Device - Bearing	None
Thermal Device - Winding	None
Vibration Sensor Indicator	No Vibration Sensor
Winding Thermal 1	Automatic Thermal Overload

Winding Thermal 1 Location

SB

Nameplate

NP1257L									
CAT.NO.	JL1307A								
SPEC.	34F156W169								
HP	.75								
VOLTS	115/230								
AMP	10.2/5.1								
RPM	1725								
FRAME	56J		HZ	60		PH	1		
SER.F.	1.25	CODE	K	DES	N	CL	B		
NEMA-NOM-EFF	68	PF	68						
RATING	40C AMB-CONT								
CC									
DE	6203	ODE	6203						
ENCL	OPEN	SN							
	SFA 11.4/5.7								

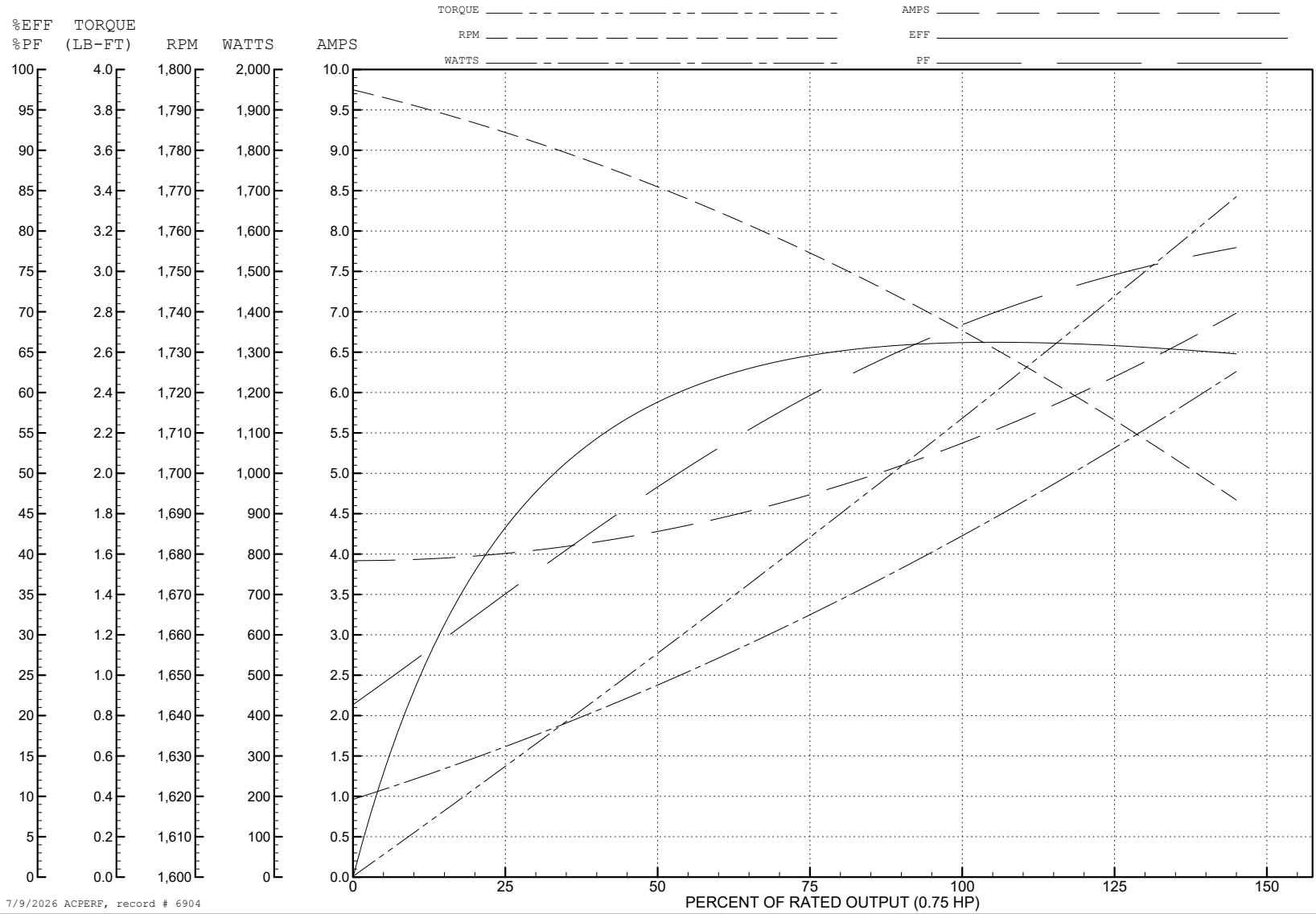
ABB Motors and Mechanical Inc.

WINDING # 34WGW169

Typical performance - not guaranteed values.

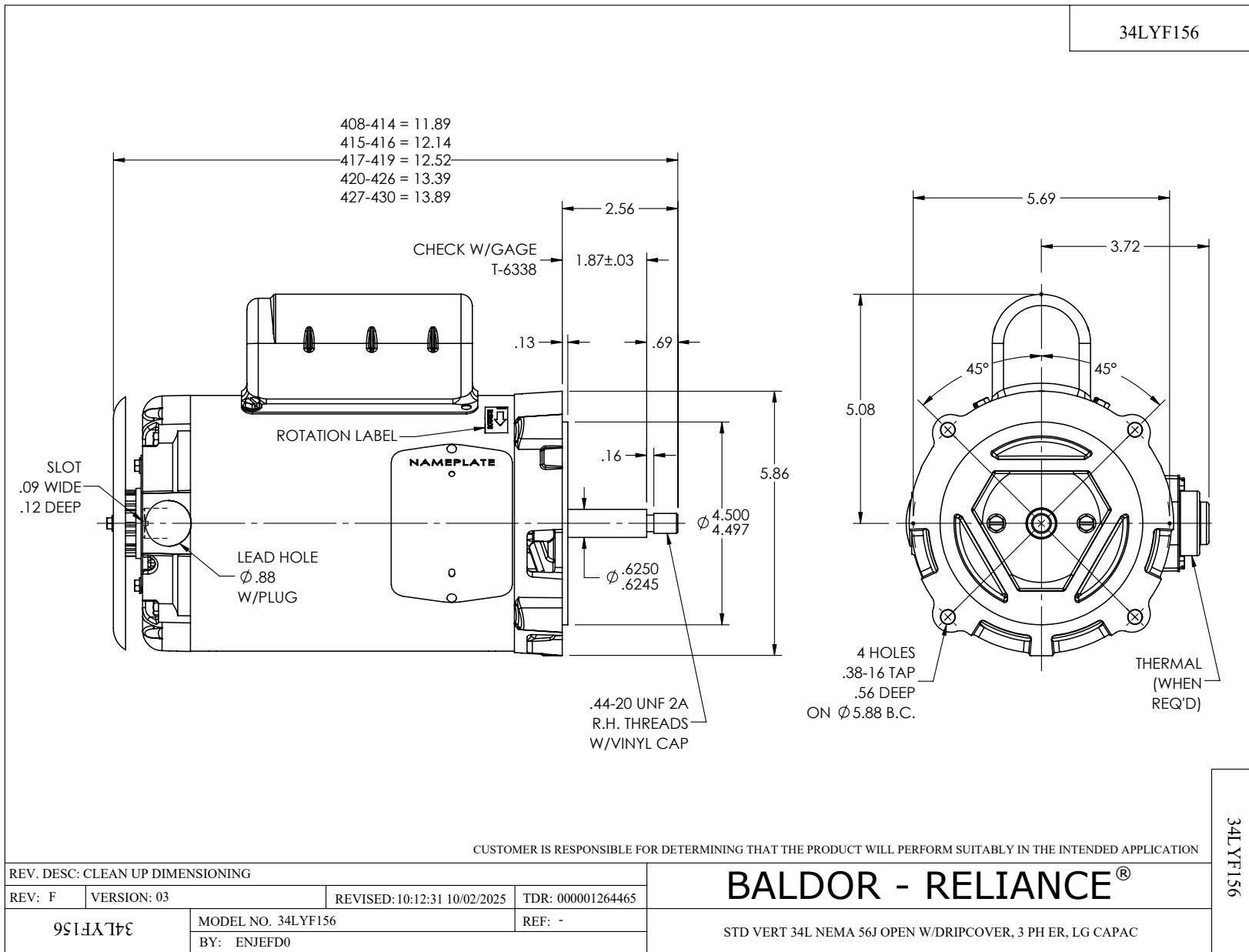
0.75 HP 1 PH 60 HZ 1725 RPM 230 V 3428L

TORQUES (LB-FT): PO=5.5 PU=4.5 LR=9.5 LRA=31



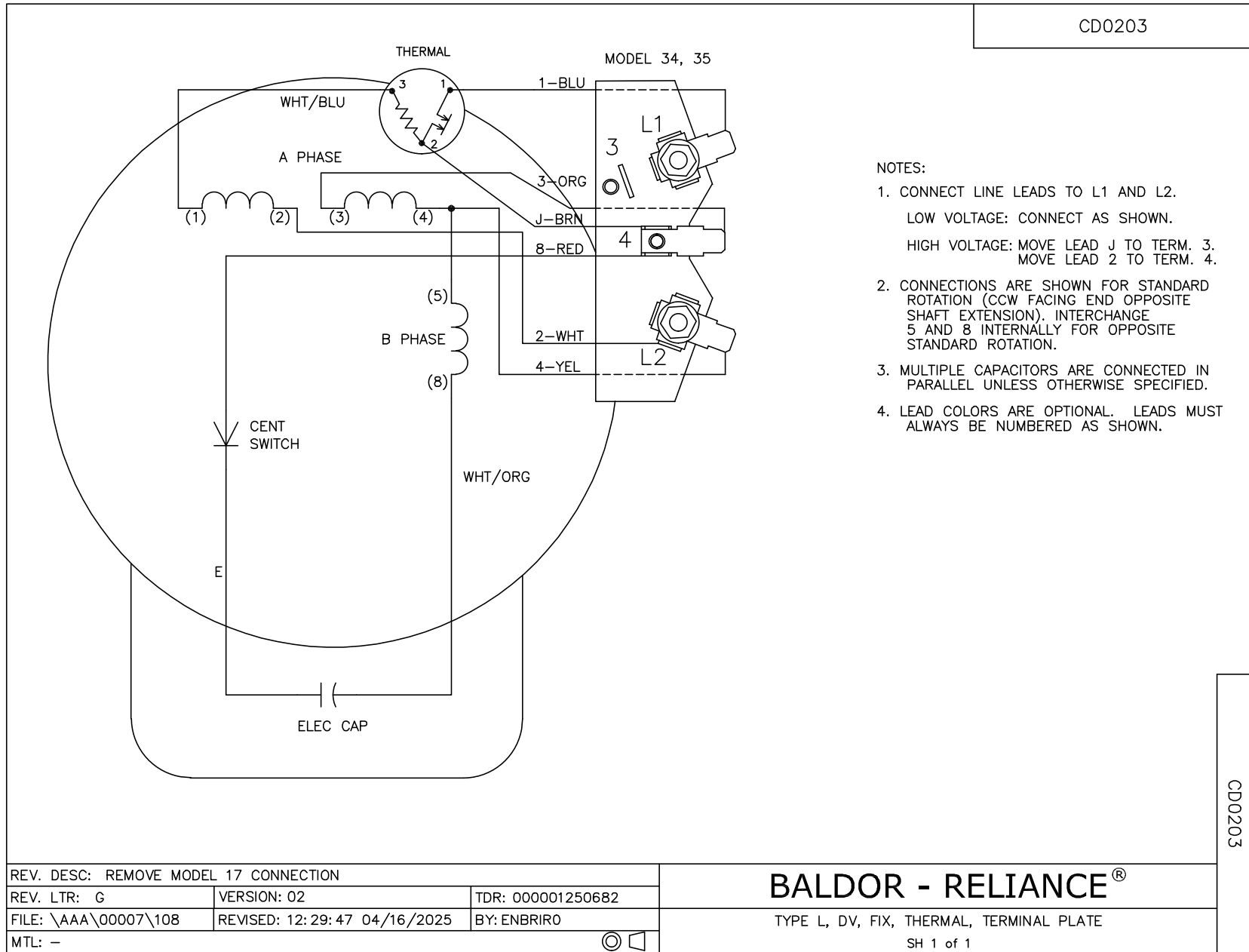
7/9/2026 ACPERF, record # 6904

34LYF156



34LYF156

CD0203



NOTES:

1. CONNECT LINE LEADS TO L1 AND L2.
LOW VOLTAGE: CONNECT AS SHOWN.
HIGH VOLTAGE: MOVE LEAD J TO TERM. 3.
MOVE LEAD 2 TO TERM. 4.
2. CONNECTIONS ARE SHOWN FOR STANDARD ROTATION (CCW FACING END OPPOSITE SHAFT EXTENSION). INTERCHANGE 5 AND 8 INTERNALLY FOR OPPOSITE STANDARD ROTATION.
3. MULTIPLE CAPACITORS ARE CONNECTED IN PARALLEL UNLESS OTHERWISE SPECIFIED.
4. LEAD COLORS ARE OPTIONAL. LEADS MUST ALWAYS BE NUMBERED AS SHOWN.

CD0203

REV. DESC: REMOVE MODEL 17 CONNECTION		
REV. LTR: G	VERSION: 02	TDR: 000001250682
FILE: \AAA\00007\108	REVISED: 12: 29: 47 04/16/2025	BY: ENBRIRO
MTL: -		© □

BALDOR - RELIANCE®

TYPE L, DV, FIX, THERMAL, TERMINAL PLATE
SH 1 of 1