



---

# Customer information packet

## JEWDM3550

1.5HP, 3450RPM, 3PH, 60HZ, 56J, 3526M, TEFC, F1

Class - None

Division - Not Applicable

## Specifications

Enclosure	TEFC
Frame	56J
Frame Material	Steel
Frequency	60.00 Hz
Motor Letter Type	Three Phase
Output @ Frequency	1.500 HP @ 60 HZ
Phase	3
Synchronous Speed @ Frequency	3600 RPM @ 60 HZ
Voltage @ Frequency	208.0 V @ 60 HZ 230.0 V @ 60 HZ 460.0 V @ 60 HZ
XP Class and Group	None
XP Division	Not Applicable
Agency Approvals	CSA EEV CSA UR
Ambient Temperature	40 °C
Auxillary Box	No Auxillary Box
Auxillary Box Lead Termination	None
Base Indicator	No Mounting
Bearing Grease Type	Polyrex EM (-20F +300F)
Blower	None
Current @ Voltage	2.000 A @ 460.0 V 4.000 A @ 230.0 V 4.100 A @ 208.0 V
Design Code	B
Drip Cover	No Drip Cover
Duty Rating	CONT
Efficiency @ 100% Load	84.0 %
Electrically Isolated Bearing	Not Electrically Isolated
Feedback Device	NO FEEDBACK
Front Face Code	Standard

## Part detail

Revision	M
Type	AC
Mech. spec.	35E2235
Base	
Status	PRD/A
Elec. spec.	35WGM774
Layout	35LYE2235
Eff. date	02-14-2024
CD Diagram	CD0005
Poles	02
Leads	9#18
Proprietary	False
Created date	07-02-2015

Front Shaft Indicator	None
Heater Indicator	No Heater
High Voltage Full Load Amps	2.0 a
Insulation Class	F
Inverter Code	Inverter Ready
KVA Code	P
Lifting Lugs	No Lifting Lugs
Locked Bearing Indicator	Locked Bearing
Motor Lead Exit	Ko Box
Motor Lead Quantity/Wire Size	9 @ 18 AWG
Motor Lead Termination	Flying Leads
Motor Standards	NEMA
Motor Type	3526M
Mounting Arrangement	F1
Number of Poles	2
Overall Length	13.72 IN
Power Factor	84
Product Family	Wash Down
Pulley End Bearing Type	Sealed Bearing
Pulley Face Code	C-Face
Pulley Shaft Indicator	Ext Thread
Rodent Screen	None
RoHS Status	ROHS COMPLIANT
Service Factor	1.30
Shaft Diameter	0.625 IN
Shaft Extension Location	Pulley End
Shaft Ground Indicator	No Shaft Grounding
Shaft Rotation	Reversible
Shaft Slinger Indicator	Shaft Slinger
Speed	3450 rpm
Speed Code	Single Speed
Starting Method	Direct on line
Thermal Device - Bearing	None
Thermal Device - Winding	None

**Vibration Sensor Indicator****No Vibration Sensor****Winding Thermal 1****None****Winding Thermal 2****None**

---

**Nameplate**

<b>NP1669L</b>									
<b>CAT.NO.</b>	JEWDM3550								
<b>SPEC.</b>	35E2235M774G2								
<b>HP</b>	1.5								
<b>VOLTS</b>	208-230/460								
<b>AMP</b>	4.1-4/2								
<b>RPM</b>	3450								
<b>FRAME</b>	56J		<b>HZ</b>	60		<b>PH</b>	3		
<b>SER.F.</b>	1.30	<b>CODE</b>	P	<b>DES</b>	B	<b>CLASS</b>	F		
<b>NEMA-NOM-EFF</b>	84	<b>PF</b>	84						
<b>RATING</b>	40C AMB-CONT								
<b>CC</b>	010A								
<b>DE</b>	6205	<b>ODE</b>	6203						
<b>ENCL</b>	TEFC	<b>SN</b>							
<b>BLANK</b>	SFA 5.1-4.8/2.4								

**AC Induction Motor Performance Data**

Record # 51670

Typical performance - not guaranteed values

Winding: 35WGM774-R070		Type: 3526M		Enclosure: TEFC			
<b>Nameplate Data</b>			<b>460 V, 60 Hz: High Voltage Connection</b>				
Rated Output (HP)	1.5	Full Load Torque	2.22 LB-FT				
Volts	208-230/460	Start Configuration	direct on line				
Full Load Amps	4.1-4/2	Breakdown Torque	14.2 LB-FT				
R.P.M.	3450	Pull-up Torque	6.33 LB-FT				
Hz	60 Phase	3	Locked-rotor Torque	11.2 LB-FT			
NEMA Design Code	B	KVA Code	P	Starting Current	25.9 A		
Service Factor (S.F.)	1.3		No-load Current	0.912 A			
NEMA Nom. Eff.	84	Power Factor	84	Line-line Res. @ 25°C	6.88 Ω		
Rating - Duty	40C AMB-CONT		Temp. Rise @ Rated Load	34°C			
S.F. Amps	5.1-4.8/2.4		Temp. Rise @ S.F. Load	43°C			
			Locked-rotor Power Factor	49.9			
			Rotor inertia	0.0719 LB-FT <sup>2</sup>			

**Load Characteristics 460 V, 60 Hz, 1.5 HP**

% of Rated Load	25	50	75	100	125	150	S.F.
Power Factor	48	67	78	84	87	89	87
Efficiency	67.2	79.7	83.2	85.1	85.4	85	85.3
Speed	3578	3559	3539	3518	3496	3470	3491
Line amperes	1.04	1.29	1.61	1.96	2.34	2.76	2.42

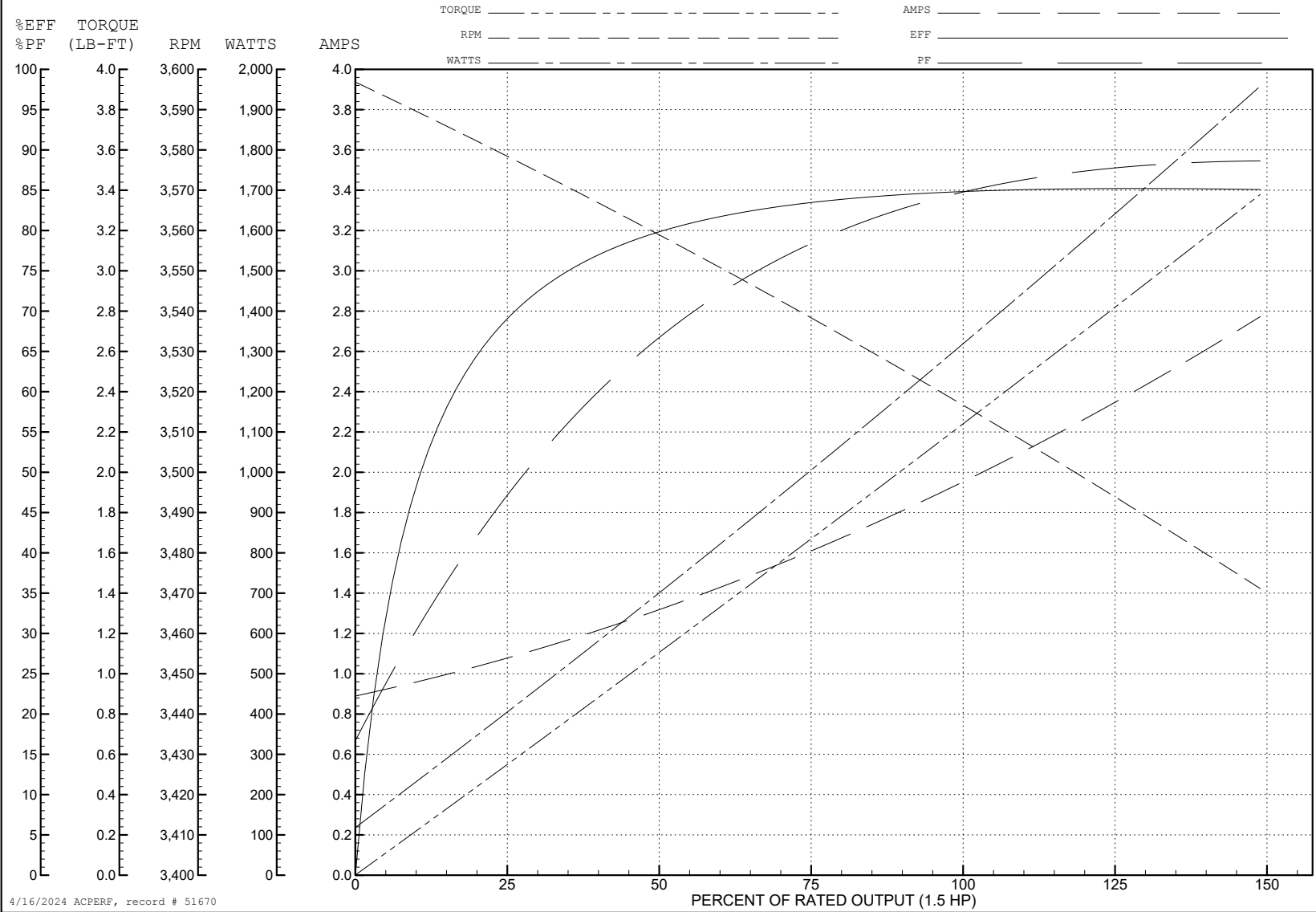
ABB Motors and Mechanical Inc.

WINDING # 35WGM774

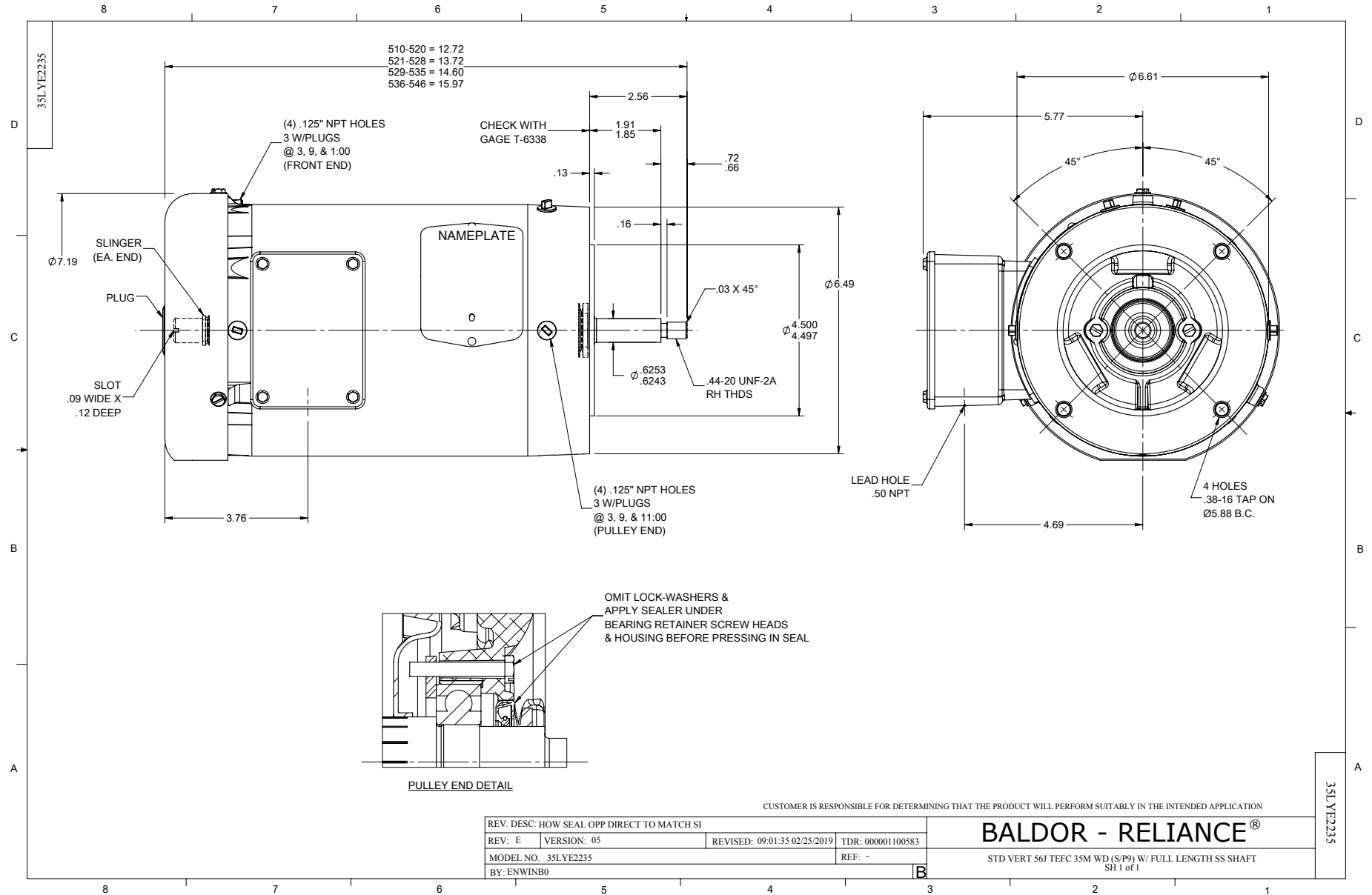
Typical performance - not guaranteed values.

1.5 HP 3 PH 60 HZ 3450 RPM 460 V 3526M

TORQUES (LB-FT): PO=14.2 PU=6.33 LR=11.2 LRA=25.9

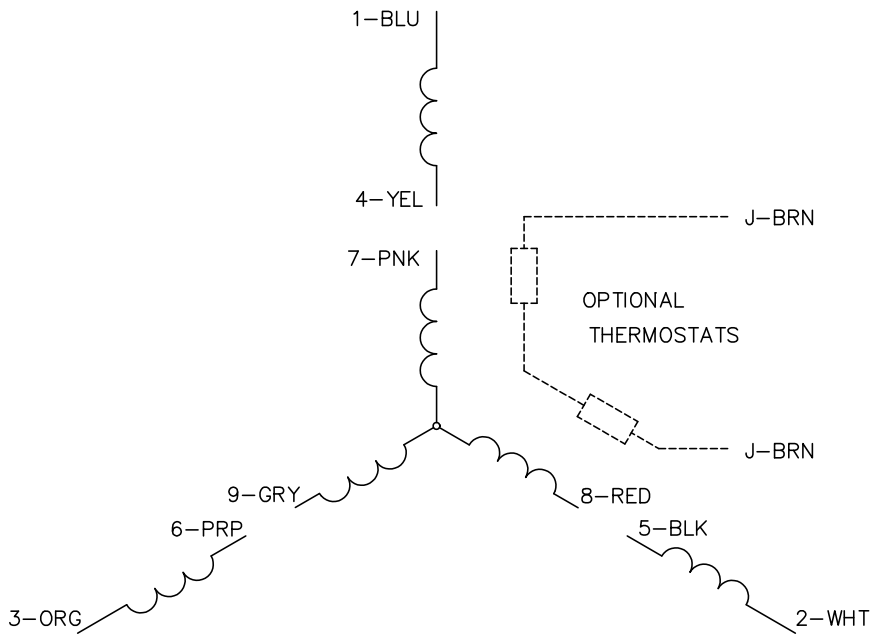


4/16/2024 ACPERF, record # 51670

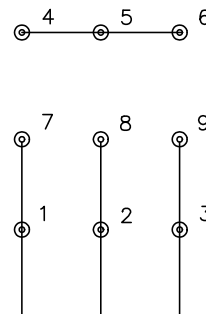




CD0005



LOW VOLTAGE  
(2Y)



LINE

HIGH VOLTAGE  
(1Y)



LINE

NOTES:

1. INTERCHANGE ANY TWO LINE LEADS TO REVERSE ROTATION.
2. OPTIONAL THERMOSTATS ARE PROVIDED WHEN SPECIFIED.
3. ACTUAL NUMBER OF INTERNAL PARALLEL CIRCUITS MAY BE A MULTIPLE OF THOSE SHOWN ABOVE.
4. LEAD COLORS ARE OPTIONAL. LEADS MUST ALWAYS BE NUMBERED AS SHOWN.

CD0005

REV. DESC: REVISE TO SHOW OPTIONAL COLORS			
REV. LTR: E	BY: JLP	REVISED: 01/19/99 10:15	TDR: 0171435
S00000		FILE: AAA00005140	MDL: -
		MTL: -	

**BALDOR ELECTRIC Co.**

3PH, DV, 9 LEADS