



Customer information packet

JEWDM3545

1HP, 3450RPM, 3PH, 60HZ, 56J, 3520M, TEFC, F1, N

Class - None

Division - Not Applicable

Specifications

Enclosure	TEFC
Frame	56J
Frame Material	Steel
Frequency	60.00 Hz
Haz Area Class and Group	None
Haz Area Division	Not Applicable
Motor Letter Type	Three Phase
Output @ Frequency	1.000 HP @ 60 HZ
Phase	3
Synchronous Speed @ Frequency	3600 RPM @ 60 HZ
Voltage @ Frequency	208.0 V @ 60 HZ 230.0 V @ 60 HZ 460.0 V @ 60 HZ
Agency Approvals	CSA EEV CSA UR
Ambient Temperature	40 °C
Auxillary Box	No Auxillary Box
Auxillary Box Lead Termination	None
Base Indicator	No Mounting
Bearing Grease Type	Polyrex EM (-20F +300F)
Blower	None
Current @ Voltage	1.600 A @ 460.0 V 3.200 A @ 230.0 V 3.300 A @ 208.0 V
Design Code	B
Drip Cover	No Drip Cover
Duty Rating	CONT
Efficiency @ 100% Load	78.5 %
Electrically Isolated Bearing	Not Electrically Isolated
Feedback Device	NO FEEDBACK
Front Face Code	Standard

Part detail

Revision	P
Type	AC
Mech. spec.	35E2235
Base	
Status	PRD/A
Elec. spec.	35WGR710
Layout	35LYE2235
Eff. date	02-14-2024
CD Diagram	CD0005
Poles	02
Leads	9#18
Proprietary	False
Created date	07-01-2015

Front Shaft Indicator	None
Heater Indicator	No Heater
High Voltage Full Load Amps	1.6 a
Insulation Class	F
Inverter Code	Not Inverter
KVA Code	P
Lifting Lugs	No Lifting Lugs
Locked Bearing Indicator	Locked Bearing
Motor Lead Exit	Ko Box
Motor Lead Quantity/Wire Size	9 @ 18 AWG
Motor Lead Termination	Flying Leads
Motor Standards	NEMA
Motor Type	3520M
Mounting Arrangement	F1
Number of Poles	2
Overall Length	12.72 IN
Power Factor	74
Product Family	Wash Down
Pulley End Bearing Type	Sealed Bearing
Pulley Face Code	C-Face
Pulley Shaft Indicator	Ext Thread
Rodent Screen	None
RoHS Status	ROHS COMPLIANT
Service Factor	1.40
Shaft Diameter	0.625 IN
Shaft Extension Location	Pulley End
Shaft Ground Indicator	No Shaft Grounding
Shaft Rotation	Reversible
Shaft Slinger Indicator	Shaft Slinger
Speed	3450 rpm
Speed Code	Single Speed
Starting Method	Direct on line
Thermal Device - Bearing	None
Thermal Device - Winding	None

Vibration Sensor Indicator	No Vibration Sensor
Winding Thermal 1	None
Winding Thermal 2	None

Nameplate

NP1669L									
CAT.NO.	JEWDM3545								
SPEC.	35E2235R710G1								
HP	1								
VOLTS	208-230/460								
AMP	3.3-3.2/1.6								
RPM	3450								
FRAME	56J		HZ	60		PH	3		
SER.F.	1.40	CODE	P	DES	B	CLASS	F		
NEMA-NOM-EFF	78.5	PF	74						
RATING	40C AMB-CONT								
CC	010A								
DE	6205	ODE	6203						
ENCL	TEFC	SN							
BLANK	SFA 4.2-4/2								

AC Induction Motor Performance Data

Record # 51666

Typical performance - not guaranteed values

Winding: 35WGR710-R026		Type: 3520M		Enclosure: TEFC	
Nameplate Data			460 V, 60 Hz: High Voltage Connection		
Rated Output (HP)	1	Full Load Torque	1.48 LB-FT		
Volts	208-230/460	Start Configuration	direct on line		
Full Load Amps	3.3-3.2/1.6	Breakdown Torque	9.7 LB-FT		
R.P.M.	3450	Pull-up Torque	6.5 LB-FT		
Hz	60 Phase	3	Locked-rotor Torque	7.5 LB-FT	
NEMA Design Code	B KVA Code	P	Starting Current	16.4 A	
Service Factor (S.F.)		1.4	No-load Current	0.84 A	
NEMA Nom. Eff.	78.5 Power Factor	74	Line-line Res. @ 25°C	10.6 Ω	
Rating - Duty		40C AMB-CONT	Temp. Rise @ Rated Load	34°C	
S.F. Amps		4.2-4/2	Temp. Rise @ S.F. Load	45°C	
			Locked-rotor Power Factor	56.5	
			Rotor inertia	0.0548 LB-FT ²	

Load Characteristics 460 V, 60 Hz, 1 HP

% of Rated Load	25	50	75	100	125	150	S.F.
Power Factor	39	57	68	74	79	81	80
Efficiency	63.3	74	78.7	80	80.9	80.5	80.7
Speed	3568	3547	3524	3498	3473	3441	3454
Line amperes	0.97	1.12	1.32	1.56	1.8	2.09	1.97

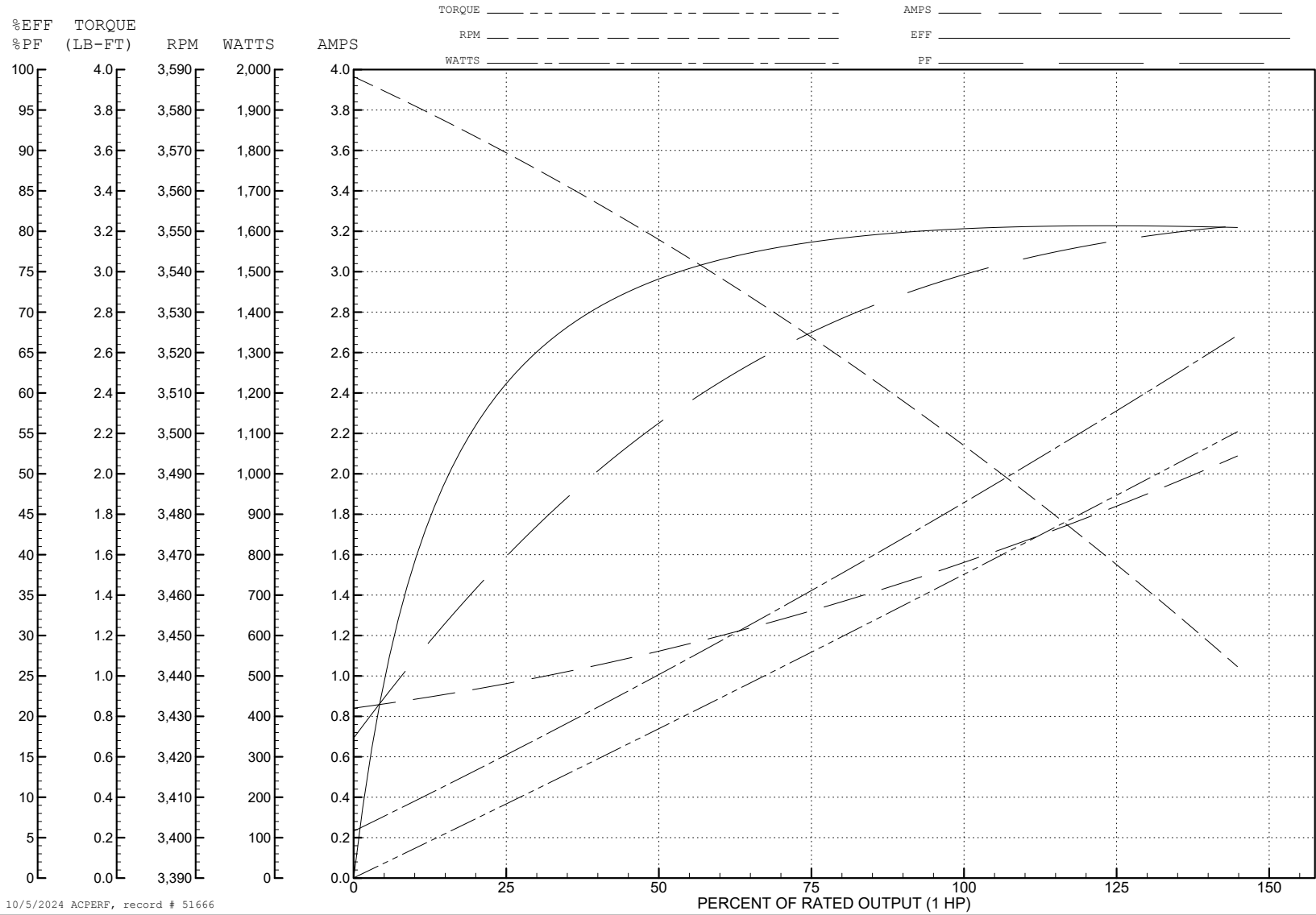
ABB Motors and Mechanical Inc.

WINDING # 35WGR710

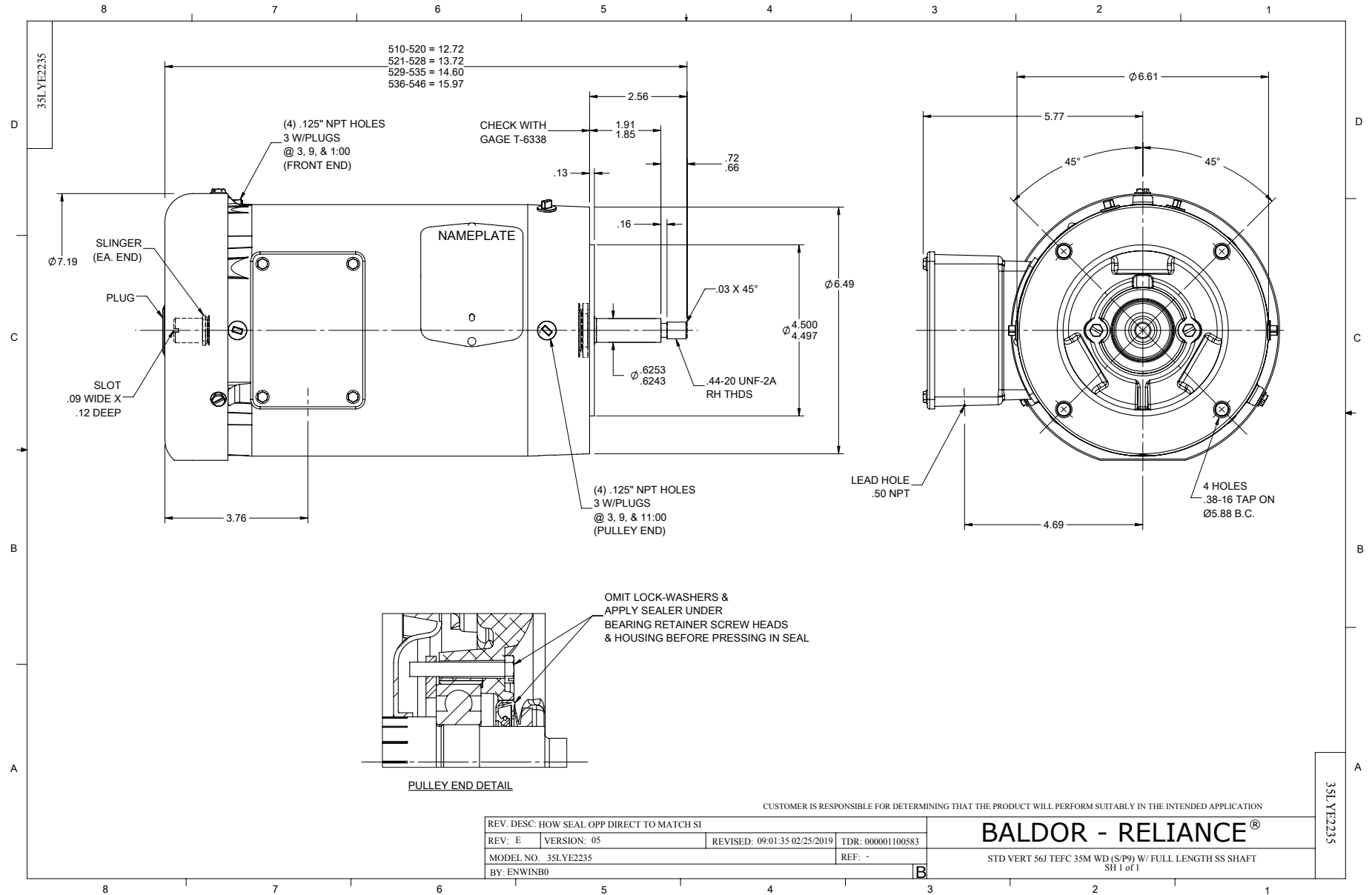
Typical performance - not guaranteed values.

1 HP 3 PH 60 HZ 3450 RPM 460 V 3520M

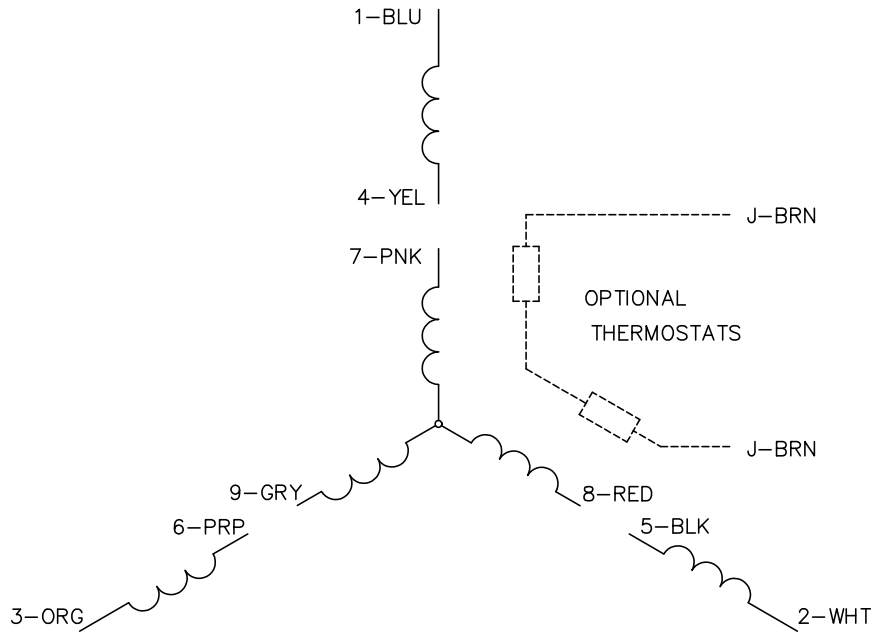
TORQUES (LB-FT): PO=9.7 PU=6.5 LR=7.5 LRA=16.4



10/5/2024 ACPERF, record # 51666



CD0005



LOW VOLTAGE
(2Y)



LINE

HIGH VOLTAGE
(1Y)



LINE

NOTES:

1. INTERCHANGE ANY TWO LINE LEADS TO REVERSE ROTATION.
2. OPTIONAL THERMOSTATS ARE PROVIDED WHEN SPECIFIED.
3. ACTUAL NUMBER OF INTERNAL PARALLEL CIRCUITS MAY BE A MULTIPLE OF THOSE SHOWN ABOVE.
4. LEAD COLORS ARE OPTIONAL. LEADS MUST ALWAYS BE NUMBERED AS SHOWN.

CD0005

REV. DESC: REVISE TO SHOW OPTIONAL COLORS			
REV. LTR: E	BY: JLP	REVISED: 01/19/99 10:15	TDR: 0171435
S00000		FILE: AAA00005140	MDL: -
		MTL: -	

BALDOR ELECTRIC Co.

3PH, DV, 9 LEADS