

# **ABB BALDOR RELIANCE III**

---

## **Customer information packet**

IM3540A-P

1HP, 1740//1430RPM, 3PH, 60//50HZ, 56YZ, 3523

Class - None

Division - Not Applicable

**Specifications**

<b>Enclosure</b>	TENV
<b>Frame</b>	56YZ
<b>Frame Material</b>	Steel
<b>Frequency</b>	50.00 Hz 60.00 Hz
<b>Haz Area Class and Group</b>	None
<b>Haz Area Division</b>	Not Applicable
<b>Motor Letter Type</b>	Three Phase
<b>Output @ Frequency</b>	1.000 HP @ 60 HZ 1.000 HP @ 50 HZ
<b>Phase</b>	3
<b>Synchronous Speed @ Frequency</b>	1800 RPM @ 60 HZ
<b>Voltage @ Frequency</b>	460.0 V @ 60 HZ 380.0 V @ 50 HZ
<b>Agency Approvals</b>	CSA UR
<b>Ambient Temperature</b>	40 °C
<b>Auxiliary Box</b>	NO AUXILLARY BOX
<b>Auxiliary Box Lead Termination</b>	None
<b>Base Indicator</b>	No Mounting
<b>Bearing Grease Type</b>	Polyrex EM (-20F +300F)
<b>Blower</b>	None
<b>Current @ Voltage</b>	1.700 A @ 460.0 V 1.800 A @ 380.0 V
<b>Design Code</b>	B
<b>Drip Cover</b>	No Drip Cover
<b>Duty Rating</b>	CONT
<b>Efficiency @ 100% Load</b>	80.0 %
<b>Electrically Isolated Bearing</b>	Not Electrically Isolated
<b>Feedback Device</b>	NO FEEDBACK
<b>Front Face Code</b>	Standard
<b>Front Shaft Indicator</b>	None

**Part Detail**

<b>Revision</b>	K
<b>Type</b>	AC
<b>Mech. spec.</b>	35K666
<b>Base</b>	
<b>Status</b>	NLA/A
<b>Elec. spec.</b>	35WGM584
<b>Layout</b>	35LYK666
<b>Eff. date</b>	03-08-2016
<b>CD Diagram</b>	CD0003
<b>Poles</b>	04
<b>Leads</b>	3#18 1-2-3 10"LG Y
<b>Proprietary</b>	False
<b>Created date</b>	01-03-2011

<b>Heater Indicator</b>	No Heater
<b>High Voltage Full Load Amps</b>	1.7 a
<b>Insulation Class</b>	F
<b>Inverter Code</b>	Not Inverter
<b>KVA Code</b>	P
<b>Lifting Lugs</b>	No Lifting Lugs
<b>Locked Bearing Indicator</b>	No Locked Bearing
<b>Motor Lead Exit</b>	Lead Hole
<b>Motor Lead Quantity/Wire Size</b>	3 @ 18 AWG
<b>Motor Lead Termination</b>	Flying Leads
<b>Motor Standards</b>	NEMA
<b>Motor Type</b>	3523M
<b>Mounting Arrangement</b>	F1
<b>Number of Poles</b>	4
<b>Overall Length</b>	11.02 IN
<b>Power Factor</b>	68
<b>Product Family</b>	General Purpose
<b>Pulley End Bearing Type</b>	No Bearing
<b>Pulley Face Code</b>	No Endplate
<b>Pulley Shaft Indicator</b>	Pump Coupling Shaft
<b>Rodent Screen</b>	None
<b>RoHS Status</b>	ROHS COMPLIANT
<b>Service Factor</b>	1.00
<b>Shaft Extension Location</b>	Pulley End
<b>Shaft Ground Indicator</b>	No Shaft Grounding
<b>Shaft Rotation</b>	Reversible
<b>Shaft Slinger Indicator</b>	No Slinger
<b>Speed</b>	1430 rpm 1740 rpm
<b>Speed Code</b>	Single Speed
<b>Starting Method</b>	Direct on line
<b>Thermal Device - Bearing</b>	None
<b>Thermal Device - Winding</b>	None
<b>Vibration Sensor Indicator</b>	No Vibration Sensor

<b>Winding Thermal 1</b>	<b>Automatic Thermal Overload</b>
<b>Winding Thermal 1 Location</b>	<b>ES</b>
<b>Winding Thermal 2</b>	<b>None</b>

---

**Nameplate**

<b>NP1280L</b>									
<b>CAT.NO.</b>									
<b>SPEC.</b>	35K666M584G1								
<b>HP</b>	1								
<b>VOLTS</b>	460//380								
<b>AMP</b>	1.7//1.8								
<b>RPM</b>	1740//1430								
<b>FRAME</b>	56YZ	<b>HZ</b>	60//50	<b>PH</b>	3				
<b>SER.F.</b>	1.00	<b>CODE</b>	P	<b>DES</b>	B	<b>CL</b>	F		
<b>NEMA-NOM-EFF</b>	80	<b>PF</b>	68						
<b>RATING</b>	40C AMB-CONT								
<b>CC</b>									
<b>DE</b>		<b>ODE</b>	6203						
<b>ENCL</b>	TENV	<b>SN</b>							

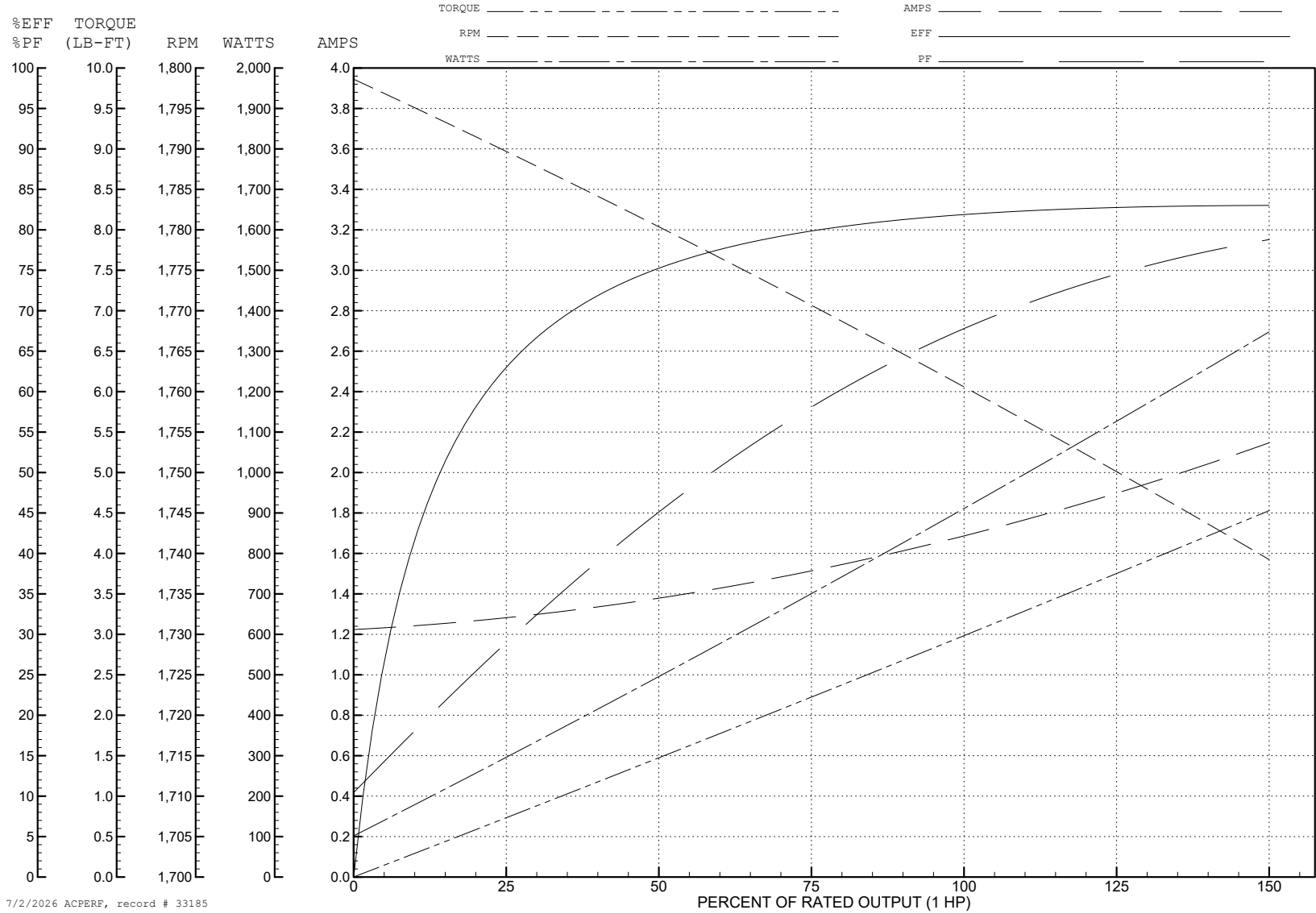
ABB Motors and Mechanical Inc.

WINDING # 35WGM584

1 HP 3 PH 60 HZ 1760.5 RPM 460 V 3523M

Typical performance - not guaranteed values.

TORQUES (LB-FT): PO=16.1 PU=9.88 LR=12 LRA=15.7



7/2/2026 ACPERF, record # 33185

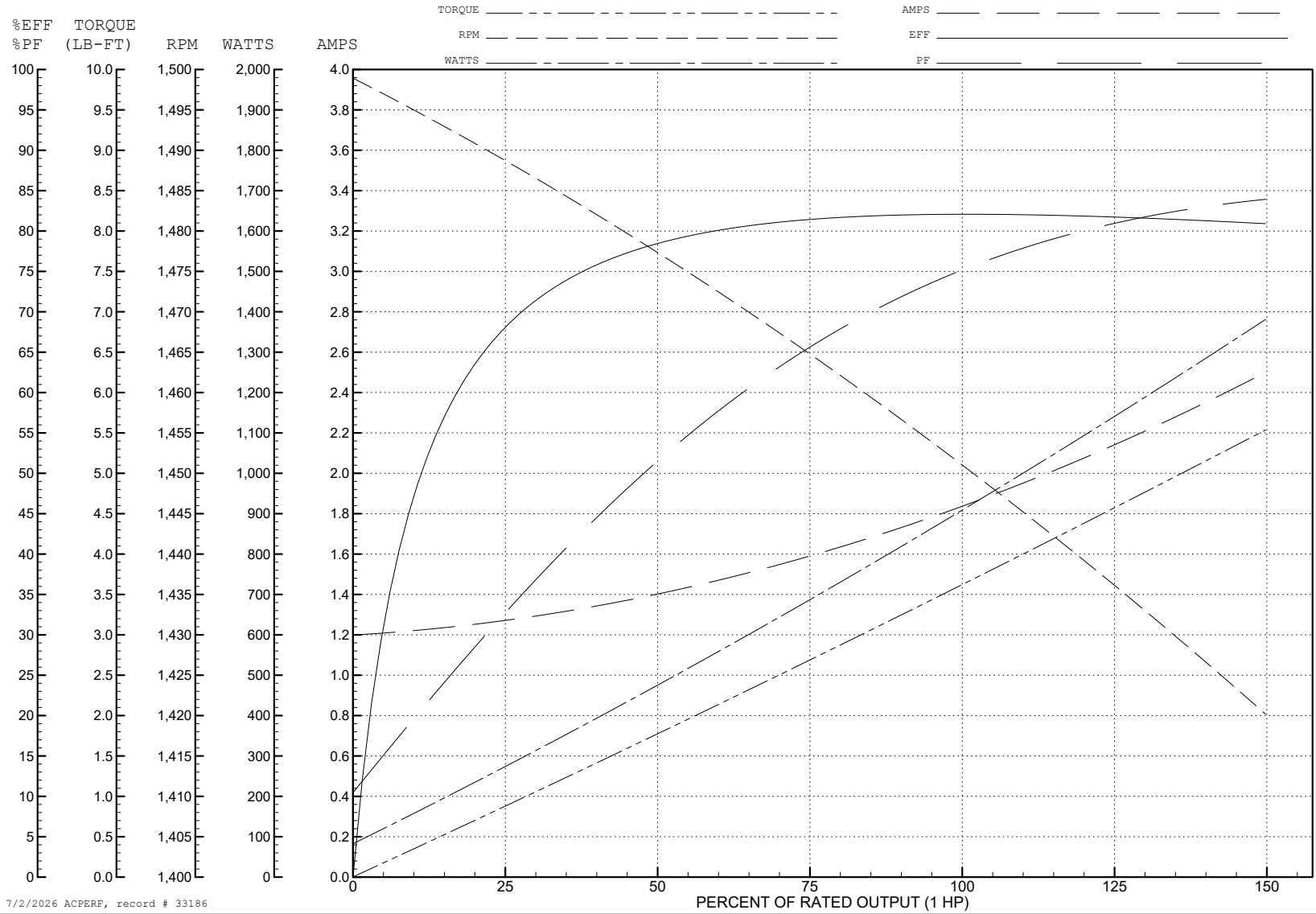
ABB Motors and Mechanical Inc.

WINDING # 35WGM584

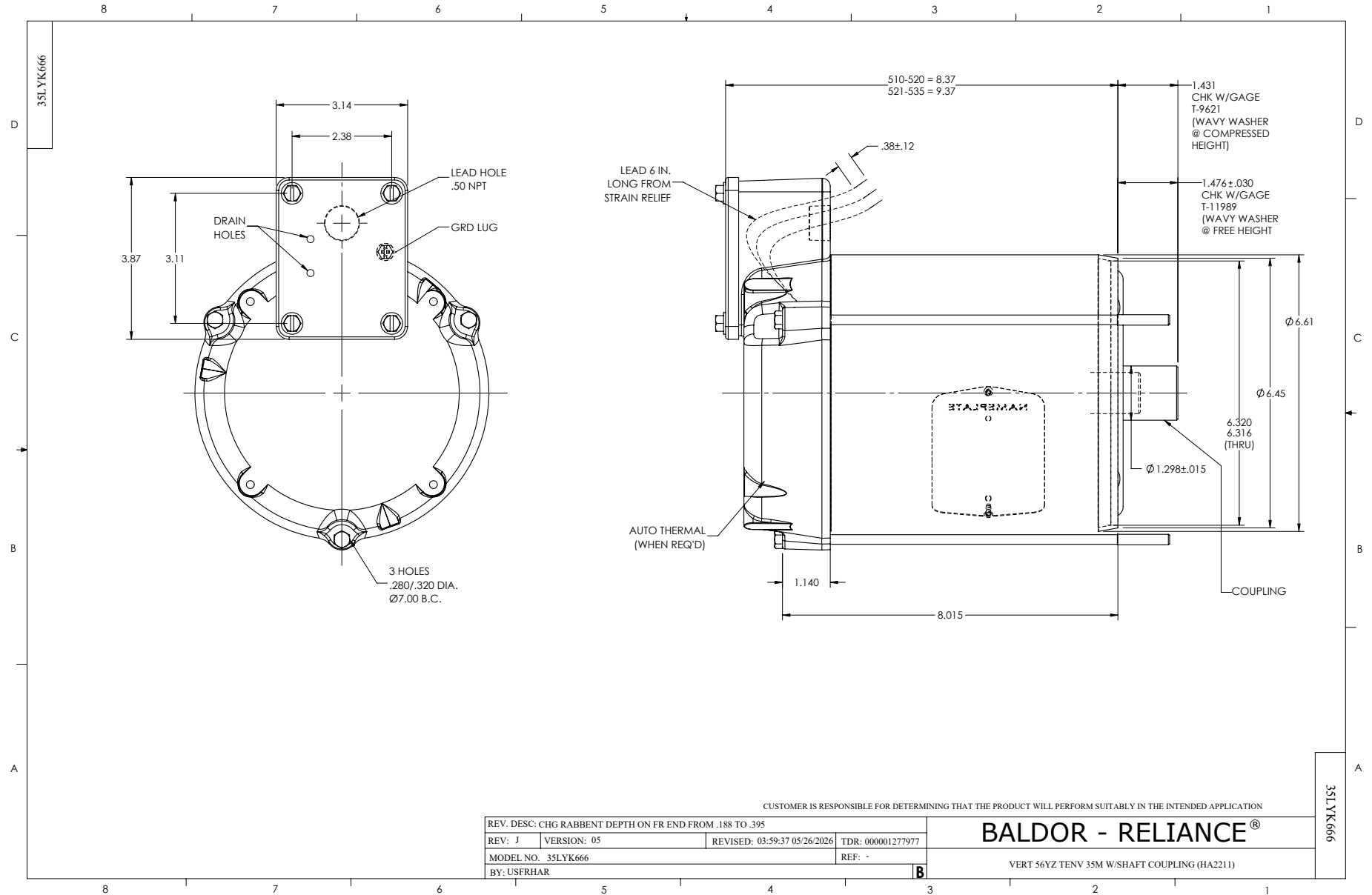
1 HP 3 PH 50 HZ 1451.1 RPM 380 V 3523M

Typical performance - not guaranteed values.

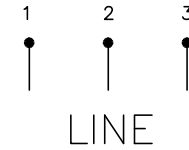
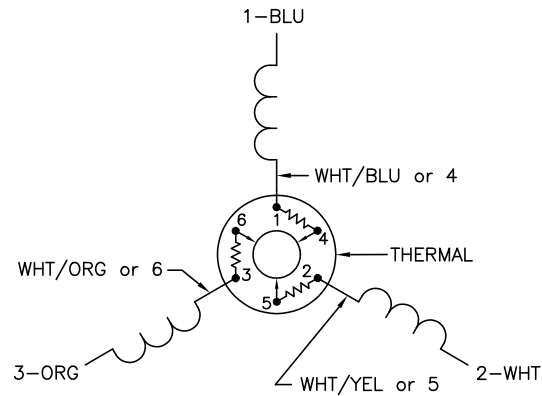
TORQUES (LB-FT): PO=14.5 PU=8.3 LR=11 LRA=13.4



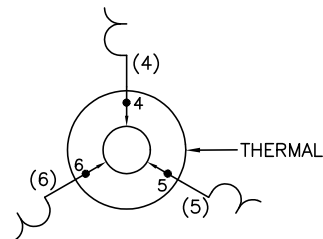
7/2/2026 ACPERF, record # 33186



CD0003



INTERNAL CONNECTION FOR  
THREE TERMINAL THERMAL



NOTES:

1. INTERCHANGE ANY TWO LINE LEADS TO REVERSE ROTATION.
2. ACTUAL NUMBER OF INTERNAL PARALLEL CIRCUITS MAY VARY.
3. LEAD COLORS ARE OPTIONAL. LEADS MUST ALWAYS BE NUMBERED AS SHOWN.

REV. DESC: CORRECT LEAD MARKING			
REV. LTR: F	BY: JLP	REVISED: 04/14/99 8:23	TDR: 0178963
Σ00000		FILE: AAA00008369	MDL: -
		MTL: -	

**BALDOR ELECTRIC Co.**

3PH, SV, THERMAL, 3 LEADS

CD0003