

BALDOR • RELIANCE

Customer information packet

IDXM7570T

10HP, 1760RPM, 3PH, 60HZ, 254TC, 0932M, XPFC, F

Class - CLI GP D

Division - Division I

Copyright © All product information within this document is subject to ABB Motors and Mechanical Inc. copyright © protection, unless otherwise noted.

6/5/2026 11:58:40 PM

Specifications

Enclosure	XPFC
Frame	254TC
Frame Material	Iron
Frequency	60.00 Hz
Haz Area Class and Group	CLI GP D
Haz Area Division	Division I
Motor Letter Type	Three Phase
Output @ Frequency	10.000 HP @ 60 HZ
Phase	3
Synchronous Speed @ Frequency	1800 RPM @ 60 HZ
Voltage @ Frequency	230.0 V @ 60 HZ 460.0 V @ 60 HZ
Agency Approvals	UL CSA UR
Ambient Temperature	40 °C
Auxiliary Box	NO AUXILLARY BOX
Auxiliary Box Lead Termination	None
Base Indicator	Rigid
Bearing Grease Type	Polyrex EM (-20F +300F)
Blower	None
Constant Torque Speed Range	6
Current @ Voltage	12.400 A @ 460.0 V 24.800 A @ 230.0 V
Design Code	A
Drip Cover	No Drip Cover
Duty Rating	CONT
Efficiency @ 100% Load	91.7 %
Feedback Device	NO FEEDBACK
Front Face Code	Standard
Front Shaft Indicator	None
Haz Area Temp Code	T2B

Part detail

Revision	U
Type	AC
Mech. spec.	09E963
Base	
Status	PRD/A
Elec. spec.	09WGZ875
Layout	09LYE963
Eff. date	01-31-2025
CD Diagram	CD0005
Poles	04
Leads	9#12
Proprietary	False
Created date	06-22-2012

Heater Indicator	No Heater
High Voltage Full Load Amps	12.4 a
Insulation Class	F
Inverter Code	Inverter Duty
KVA Code	H
Lifting Lugs	Standard Lifting Lugs
Locked Bearing Indicator	Locked Bearing
Max Speed	2700 rpm
Motor Lead Exit	Ko Box
Motor Lead Quantity/Wire Size	9 @ 12 AWG
Motor Lead Termination	Flying Leads
Motor Standards	NEMA
Motor Type	0932M
Mounting Arrangement	F1
Number of Poles	4
Overall Length	26.00 IN
Power Factor	82
Product Family	General Purpose
Pulley End Bearing Type	Ball
Pulley Face Code	C-Face
Pulley Shaft Indicator	Standard
Rodent Screen	None
Service Factor	1.00
Shaft Diameter	1.625 IN
Shaft Extension Location	Pulley End
Shaft Ground Indicator	No Shaft Grounding
Shaft Rotation	Reversible
Shaft Slinger Indicator	No Slinger
Speed	1770 rpm
Speed Code	Single Speed
Starting Method	Direct on line
Thermal Device - Bearing	None
Thermal Device - Winding	Normally Closed Thermostat
Vibration Sensor Indicator	No Vibration Sensor

Winding Thermal 1

None

Winding Thermal 2

None

Nameplate

NP0890XPSLEV

NO.		CC	010A						
S/N		TEMP CODE	T2B						
SPEC.	09E963Z875	INV.TYPE	PWM						
CAT.NO.	IDXM7570T	C HP FR	60	C HP TO	90				
HP	10	CT HZ FROM	6	CT HZ TO	60				
VOLTS	230/460	VT HZ FROM	6	VT HZ TO	60				
AMPS	24.8/12.4	MAG CUR	10.6/5.3						
RPM	1770	MX RPM	2700						
HZ	60	PH	3	CL	F	NOM.EFF.	91.7		
SER.F.	1.00	DES	A	SL HZ	1	WK2	1.4		
FRAME	254TC	RATING	40C AMB-CONT						

**AC Induction Motor Performance Data**

Record # 38931

Typical performance - not guaranteed values

Winding: 09WVGZ875	Type: 0932M	Enclosure: XPFC
---------------------------	--------------------	------------------------

Nameplate Data			General Characteristics at 460 V, 60 Hz: High Volt Connection		
Rated Output (HP)	10		Full Load Torque	29.8 LB-FT	
Volts	230/460		Start Configuration	DOL	
Full Load Amps	24/12		Break Down Torque	116 LB-FT	
R.P.M.	1760		Pull-Up Torque	47.2 LB-FT	
Hz	60	Phase	3	Locked-rotor Torque	54.7 LB-FT
NEMA Design Code	B	KVA Code	H	Starting Current	85.4 Amps
Service Factor	1		No-load Current	5 Amps	
NEMA Nom. Eff.	91.7	P.F.	82	Line-line Res. @ 25°C.	0.937 Ohms
Rating - Duty	40C AMB-CONT		Temp. Rise @ Rated Load	41°C	
S.F. Amps			Temp. Rise @ S.F. Load		

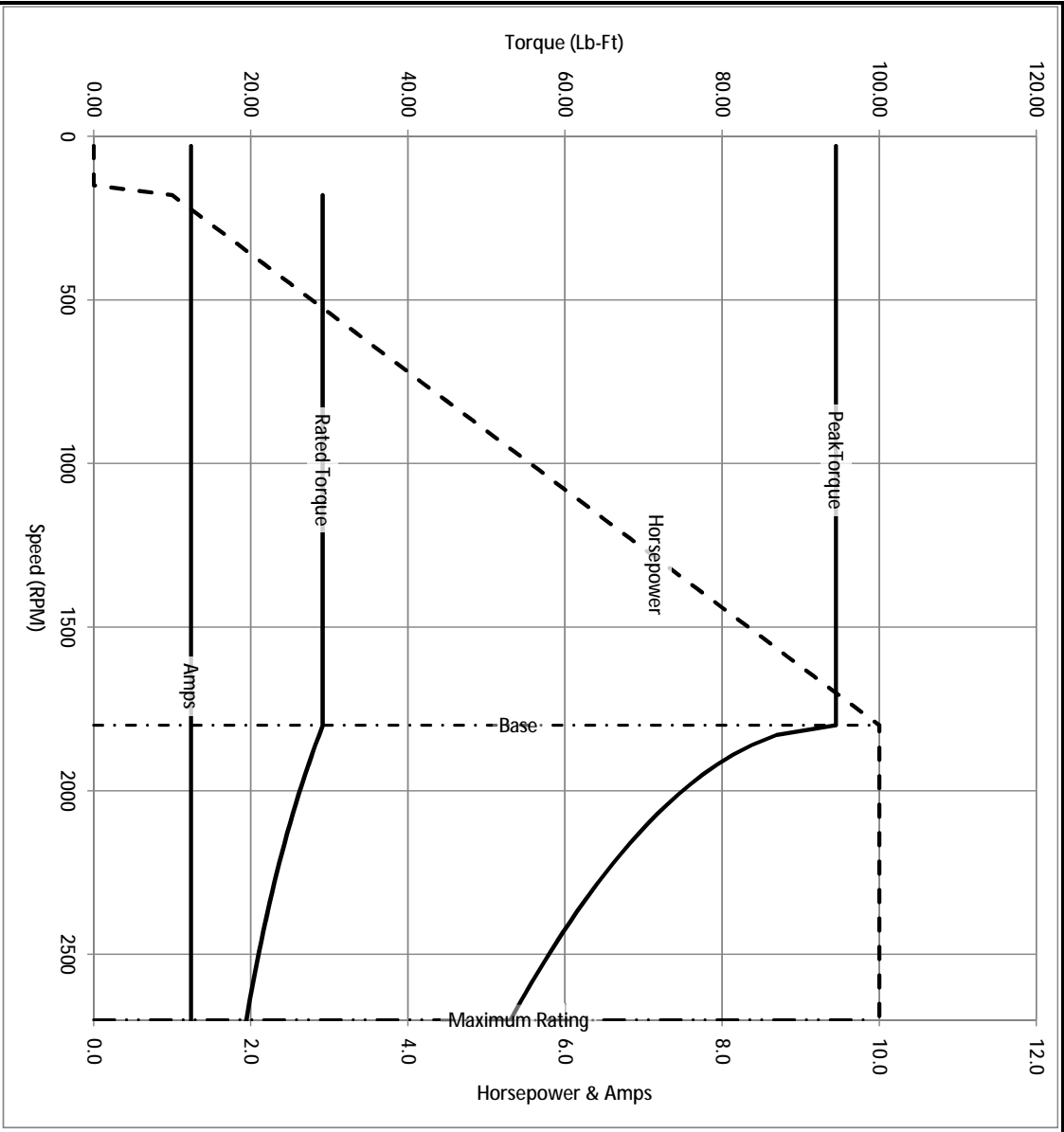
Load Characteristics at 460 Volts, 60 Hz, 10 HP

% of Rated Load	25	50	75	100	125	150	S.F.
Power Factor	48	71	80	85	86	86	
Efficiency	86.2	91	92.2	92.2	91.4	90.4	
Speed	1791	1782	1774	1764	1754	1743	
Line Amperes	5.78	7.36	9.55	12	14.8	17.8	

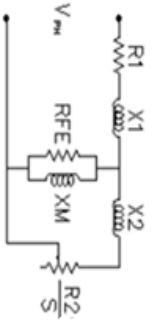
Baldor Electric Company Fort Smith, Arkansas

BALDOR • RELIANCE

Catalog	IDXM7570T	NP VOLTS	230/460	ENCLOSURE	XPFC	WVE CONN. EQ. CKT OHMS PER PHASE (BASE RATING, 20°C)
FRAME	254TC	NP AMPS	24.8/12.4	Base Volts	460	R1 0.459 X1 1.686
HP	10 HP	DUTY	Cont	Base AMPS	12.4	R2 0.329 X2 1.795
BASE SPEED	1800	MAX SAFE RPM	2700	Slip Hz	0.97	XM1 46.754
PHASE/HZ	3/60	AMB ⁶ /C/INSUL	40/F	Wk ² (lb-ft ²)	1.4	



Remarks: Calculated Data



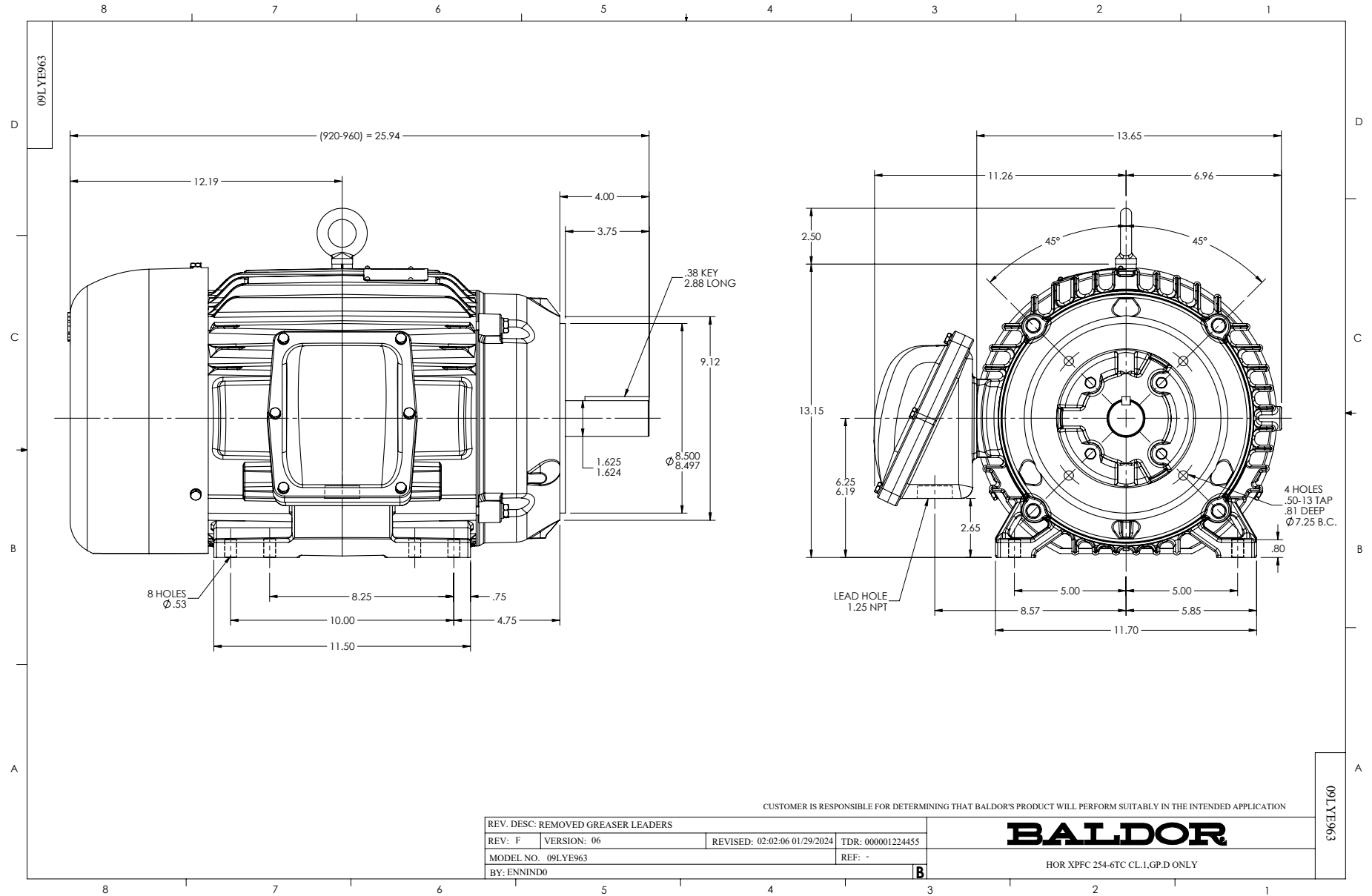
BALDOR
A MEMBER OF THE ABB GROUP

DR BY ENR
CK BY
APP BY ENR
DATE 2/28/2013

A-C MOTOR
PERFORMANCE CURVES

09E963Z875

ISSUE DATE 2/28/2013



CD0005

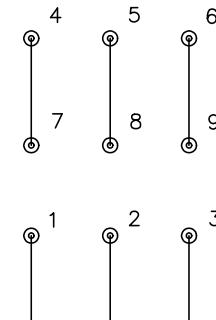


LOW VOLTAGE
(2Y)



LINE

HIGH VOLTAGE
(1Y)



LINE

NOTES:

1. INTERCHANGE ANY TWO LINE LEADS TO REVERSE ROTATION.
2. OPTIONAL THERMOSTATS ARE PROVIDED WHEN SPECIFIED.
3. ACTUAL NUMBER OF INTERNAL PARALLEL CIRCUITS MAY BE A MULTIPLE OF THOSE SHOWN ABOVE.
4. LEAD COLORS ARE OPTIONAL. LEADS MUST ALWAYS BE NUMBERED AS SHOWN.

CD0005

REV. DESC: REVISE TO SHOW OPTIONAL COLORS			
REV. LTR: E	BY: JLP	REVISED: 01/19/99 10:15	TDR: 0171435
S00000		FILE: AAA00005140	MDL: -
		MTL: -	

BALDOR ELECTRIC Co.

3PH, DV, 9 LEADS