

ABB BALDOR RELIANCE III

Customer information packet

IDXM7063T-C

25HP, 3520RPM, 3PH, 60HZ, 284TS, 1048M, XPFC, F

Class - CLI GP C,D; CLII GP F,G

Division - Division I

Specifications

Enclosure	XPFC
Frame	284TS
Frame Material	Iron
Frequency	60.00 Hz
Haz Area Class and Group	CLI GP C,D; CLII GP F,G
Haz Area Division	Division I
Motor Letter Type	Three Phase
Output @ Frequency	25.000 HP @ 60 HZ
Phase	3
Synchronous Speed @ Frequency	3600 RPM @ 60 HZ
Voltage @ Frequency	230.0 V @ 60 HZ 460.0 V @ 60 HZ
Agency Approvals	CSA CSA EEV UR
Ambient Temperature	40 °C
Auxiliary Box	NO AUXILLARY BOX
Auxiliary Box Lead Termination	None
Base Indicator	Rigid
Bearing Grease Type	Polyrex EM (-20F +300F)
Blower	None
Constant Torque Speed Range	15
Current @ Voltage	28.000 A @ 460.0 V 56.000 A @ 230.0 V
Design Code	B
Drip Cover	No Drip Cover
Duty Rating	CONT
Efficiency @ 100% Load	91.7 %
Electrically Isolated Bearing	Not Electrically Isolated
Enclosure Modification	Severe Duty Features
Feedback Device	NO FEEDBACK
Front Face Code	Standard

Part Detail

Revision	F
Type	AC
Mech. spec.	10G758
Base	
Status	INA/A
Elec. spec.	10WGZ273
Layout	10LYG758
Eff. date	03-10-2021
CD Diagram	CD0180
Poles	02
Leads	9#10
Proprietary	False
Created date	08-10-2017

Front Shaft Indicator	None
Haz Area Temp Code	T3C
Heater Indicator	No Heater
High Voltage Full Load Amps	28.0 a
Insulation Class	F
Inverter Code	Inverter Duty
KVA Code	F
Lifting Lugs	No Lifting Lugs
Locked Bearing Indicator	Locked Bearing
Max Speed	5400 rpm
Motor Lead Exit	Ko Box
Motor Lead Quantity/Wire Size	9 @ 10 AWG
Motor Lead Termination	Flying Leads
Motor Standards	NEMA
Motor Type	X1048M
Mounting Arrangement	F1
Number of Poles	2
Overall Length	27.23 IN
Power Factor	90
Product Family	General Purpose
Pulley End Bearing Type	Ball
Pulley Face Code	Standard
Pulley Shaft Indicator	Standard
Rodent Screen	None
RoHS Status	ROHS NON-COMPLIANT
Service Factor	1.00
Shaft Diameter	1.625 IN
Shaft Extension Location	Pulley End
Shaft Ground Indicator	No Shaft Grounding
Shaft Rotation	Reversible
Shaft Slinger Indicator	No Slinger
Speed	3520 rpm
Speed Code	Single Speed
Starting Method	Direct on line

Thermal Device - Bearing	None
Thermal Device - Winding	Normally Closed Thermostat
Vibration Sensor Indicator	No Vibration Sensor
Winding Thermal 1	None
Winding Thermal 2	None

Nameplate

NP0681XPSLEV

NO.		CC	010A						
S/N		TEMP CODE	T3C						
SPEC.	10G758Z273G1	INV.TYPE	PWM						
CAT.NO.		C HP FR	60	C HP TO	90				
HP	25	CT HZ FROM	15	CT HZ TO	60				
VOLTS	230/460	VT HZ FROM	6	VT HZ TO	60				
AMPS	56/28	MAG CUR	14/7						
RPM	3520	MX RPM	5400						
HZ	60	PH	3	CL	F	NOM.EFF.	91.7		
SER.F.	1.00	DES	B	SL HZ	1.3	WK2	2.07		
FRAME	284TS	RATING	40C AMB-CONT						

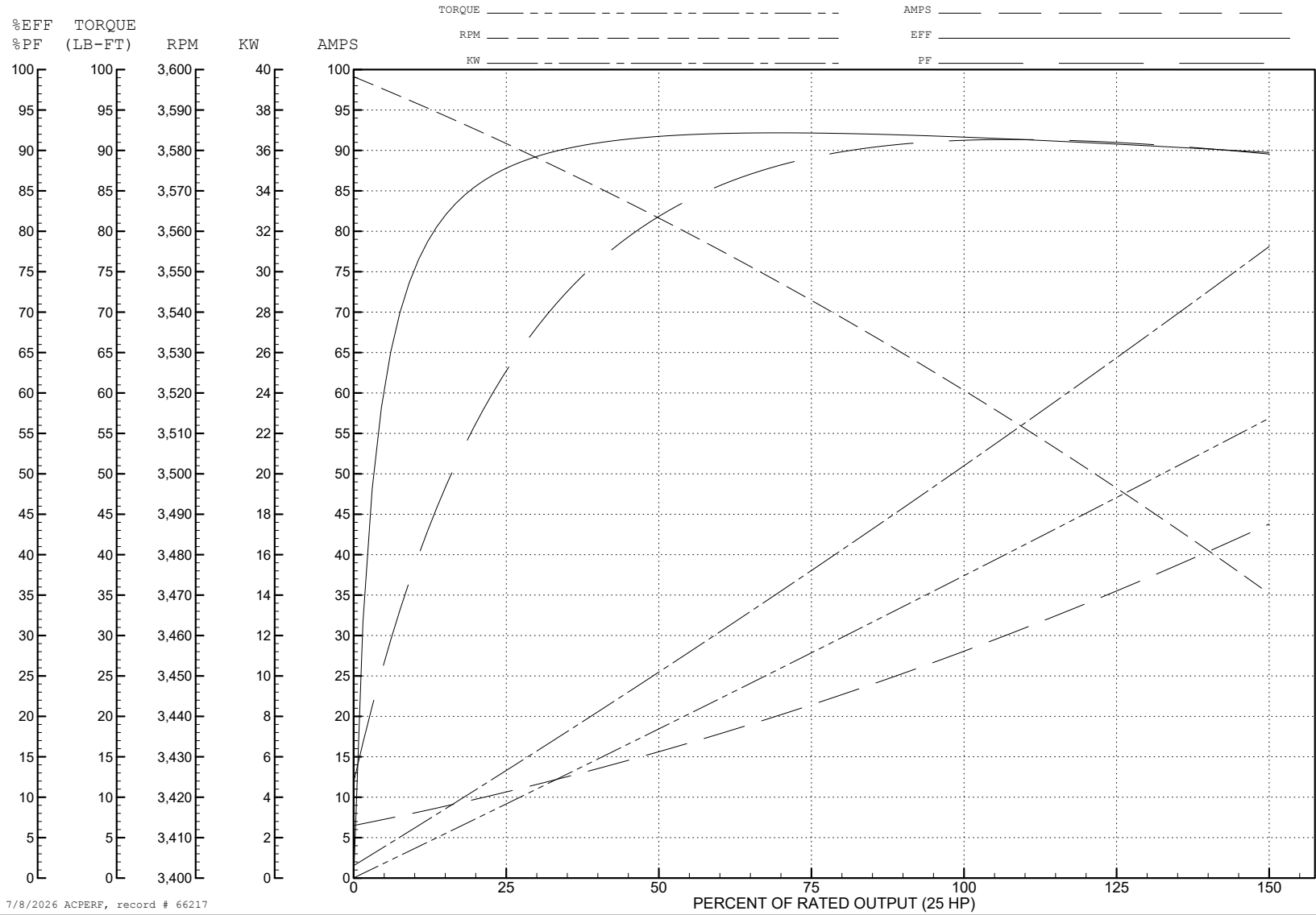
ABB Motors and Mechanical Inc.

WINDING # 10WGZ273

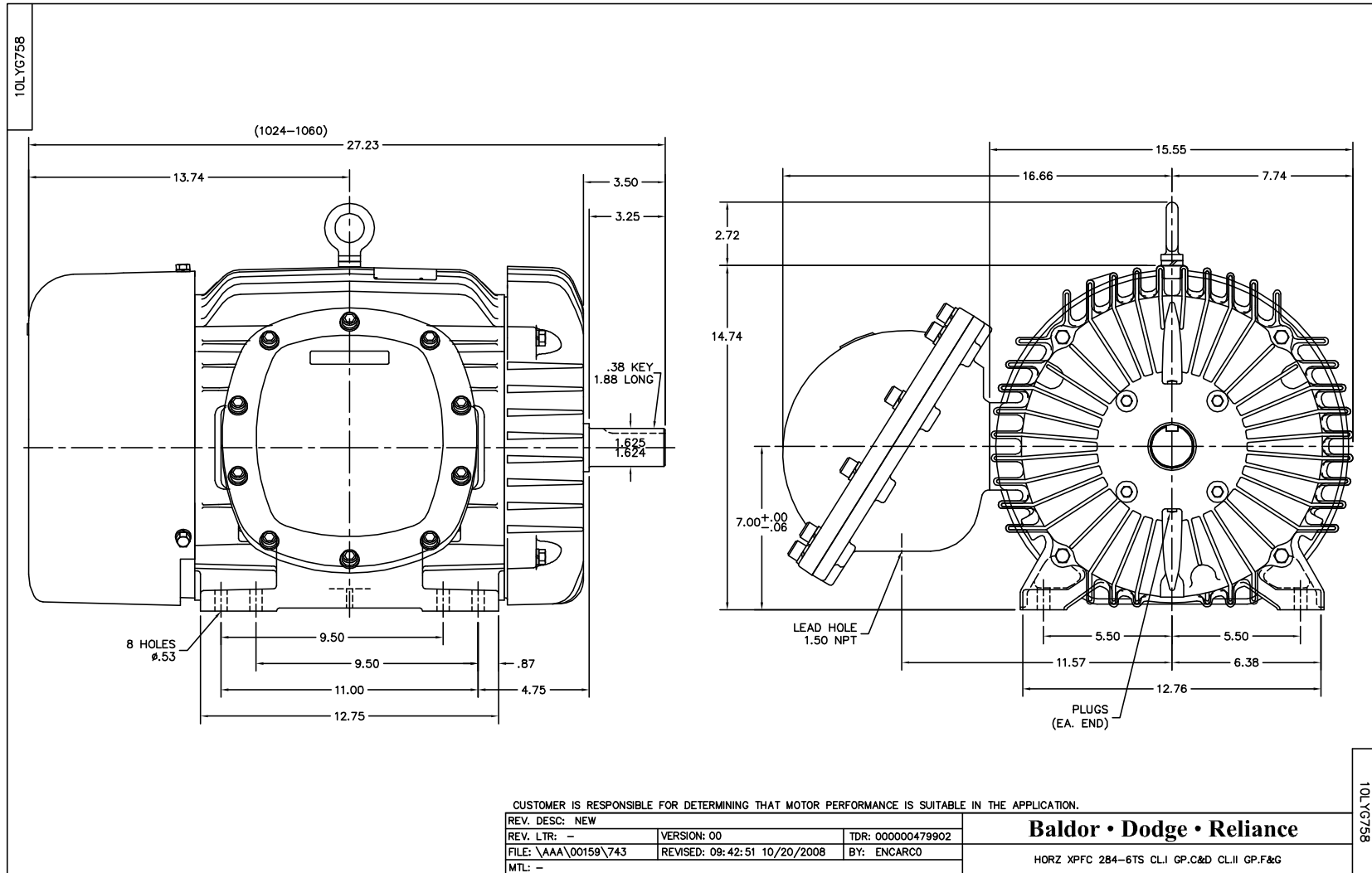
Typical performance - not guaranteed values.

25 HP 3 PH 60 HZ 3520 RPM 460 V 1048M

TORQUES (LB-FT): PO=103 PU=42.1 LR=54 LRA=171



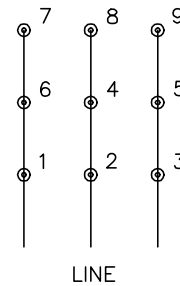
7/8/2026 ACPERF, record # 66217



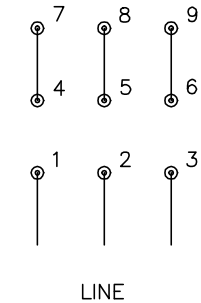
CD0180



LOW VOLTAGE
(2D)



HIGH VOLTAGE
(1D)



NOTES:

1. INTERCHANGE ANY TWO LINE LEADS TO REVERSE ROTATION.
2. OPTIONAL THERMOSTATS ARE PROVIDED WHEN SPECIFIED.
3. ACTUAL NUMBER OF INTERNAL PARALLEL CIRCUITS MAY BE A MULTIPLE OF THOSE SHOWN ABOVE.
4. LEAD COLORS ARE OPTIONAL. LEADS MUST ALWAYS BE NUMBERED AS SHOWN.

CD0180

REV. DESC: ADD CLASS CONN00000007		
REV. LTR: D	VERSION: 01	TDR: 000001099922
FILE: \AAA\00005\148	REVISED: 10: 25: 29 02/19/2019	BY: ENBRIRO
MTL: -	© □	

BALDOR - RELIANCE®

3PH, DV, 9 LEADS, DELTA CONNECTION

SH 1 of 1