



---

# Customer information packet

## IDWNM22938T

10HP, 1765RPM, 3PH, 60HZ, 254TC, 3956M, TENV

Class -

Division - Not Applicable

## Specifications

Enclosure	TENV
Frame	254TC
Frame Material	Steel
Frequency	60.00 Hz
Motor Letter Type	Three Phase
Output @ Frequency	10.000 HP @ 60 HZ
Phase	3
Synchronous Speed @ Frequency	1800 RPM @ 60 HZ
Voltage @ Frequency	460.0 V @ 60 HZ 230.0 V @ 60 HZ
XP Division	Not Applicable
Agency Approvals	CSA UR
Ambient Temperature	40 °C
Auxillary Box	No Auxillary Box
Auxillary Box Lead Termination	None
Base Indicator	Rigid
Bearing Grease Type	Polyrex EM (-20F +300F)
Blower	None
Current @ Voltage	12.000 A @ 460.0 V 24.000 A @ 230.0 V
Design Code	B
Drip Cover	No Drip Cover
Duty Rating	CONT
Efficiency @ 100% Load	91.7 %
Electrically Isolated Bearing	Not Electrically Isolated
Feedback Device	NO FEEDBACK
Front Face Code	Encoder/Feedback Device
Front Shaft Indicator	None
Heater Indicator	No Heater
High Voltage Full Load Amps	12.0 a
Insulation Class	H

## Part detail

Revision	AL
Type	AC
Mech. spec.	39R099
Base	
Status	PRD/A
Elec. spec.	39WGW632
Layout	39LYR099
Eff. date	11-22-2022
CD Diagram	CD0005
Poles	04
Leads	9#12
Proprietary	False
Created date	01-01-0001

<b>Inverter Code</b>	<b>Inverter Duty</b>
<b>KVA Code</b>	<b>H</b>
<b>Lifting Lugs</b>	<b>Standard Lifting Lugs</b>
<b>Locked Bearing Indicator</b>	<b>Locked Bearing</b>
<b>Max Speed</b>	<b>5000 rpm</b>
<b>Motor Lead Exit</b>	<b>Ko Box</b>
<b>Motor Lead Quantity/Wire Size</b>	<b>9 @ 12 AWG</b>
<b>Motor Lead Termination</b>	<b>Flying Leads</b>
<b>Motor Standards</b>	<b>NEMA</b>
<b>Motor Type</b>	<b>3956M</b>
<b>Mounting Arrangement</b>	<b>F1</b>
<b>Number of Poles</b>	<b>4</b>
<b>Overall Length</b>	<b>23.92 IN</b>
<b>Power Factor</b>	<b>85</b>
<b>Product Family</b>	<b>Wash Down</b>
<b>Pulley End Bearing Type</b>	<b>Sealed Bearing</b>
<b>Pulley Face Code</b>	<b>C-Face</b>
<b>Pulley Shaft Indicator</b>	<b>Standard</b>
<b>Rodent Screen</b>	<b>None</b>
<b>Service Factor</b>	<b>1.00</b>
<b>Shaft Diameter</b>	<b>1.625 IN</b>
<b>Shaft Extension Location</b>	<b>Pulley End</b>
<b>Shaft Ground Indicator</b>	<b>No Shaft Grounding</b>
<b>Shaft Rotation</b>	<b>Reversible</b>
<b>Shaft Slinger Indicator</b>	<b>Shaft Slinger</b>
<b>Speed</b>	<b>1765 rpm</b>
<b>Speed Code</b>	<b>Single Speed</b>
<b>Starting Method</b>	<b>Direct on line</b>
<b>Thermal Device - Bearing</b>	<b>None</b>
<b>Thermal Device - Winding</b>	<b>Normally Closed Thermostat</b>
<b>Vibration Sensor Indicator</b>	<b>No Vibration Sensor</b>

**Nameplate**

<b>NP1162L</b>					
<b>CAT NO</b>	IDWNM22938T				
<b>SPEC.</b>	39R099W632G1				
<b>FRAME</b>	254TC	<b>HP</b>	10 TE		
<b>VOLTS</b>	230/460				
<b>MAG CUR</b>	8.8/4.4	<b>FLA</b>	24/12		
<b>RPM</b>	1765	<b>RPM MAX</b>	5000		
<b>HZ</b>	60	<b>PH</b>	3	<b>CLASS</b>	H
<b>SER.F.</b>	1.00	<b>DES</b>	B	<b>SL HZ</b>	1.22
<b>NEMA-NOM-EFF</b>	91.7	<b>WK2</b>	2.44		
<b>BLWR V</b>	<b>PH</b>	<b>HZ</b>	<b>A</b>		
<b>RATING</b>	40C AMB-CONT				
<b>DE BRG</b>	6309	<b>ODE BRG</b>	6208		
<b>CC</b>	010A	<b>SN</b>			

**AC Induction Motor Performance Data**

Record # 12831

Typical performance - not guaranteed values

Winding: 39WGW632-R001		Type: 3956M	Enclosure: TENV		
<b>Nameplate Data</b>		<b>460 V, 60 Hz: High Voltage Connection</b>			
Rated Output (HP)	10	Full Load Torque	30 LB-FT		
Volts	230/460	Start Configuration	direct on line		
Full Load Amps	24/12	Breakdown Torque	114 LB-FT		
R.P.M.	1765	Pull-up Torque	41.5 LB-FT		
Hz	60 Phase	3	Locked-rotor Torque	58 LB-FT	
NEMA Design Code	B	KVA Code	H	Starting Current	87 A
Service Factor (S.F.)	1	No-load Current	4.4 A		
NEMA Nom. Eff.	91.7	Power Factor	85	Line-line Res. @ 25°C	0.744 Ω
Rating - Duty	40C	AMB-CONT	Temp. Rise @ Rated Load	89°C	
			Locked-rotor Power Factor	31.9	
			Rotor inertia	2.45 LB-FT <sup>2</sup>	

**Load Characteristics 460 V, 60 Hz, 10 HP**

% of Rated Load	25	50	75	100	125	150
Power Factor	52	72	81	85	86	87
Efficiency	87.7	91.7	92.4	92	91.2	90.1
Speed	1791	1783	1774	1764	1753	1741
Line amperes	5.3	7.2	9.5	12	14.9	17.9

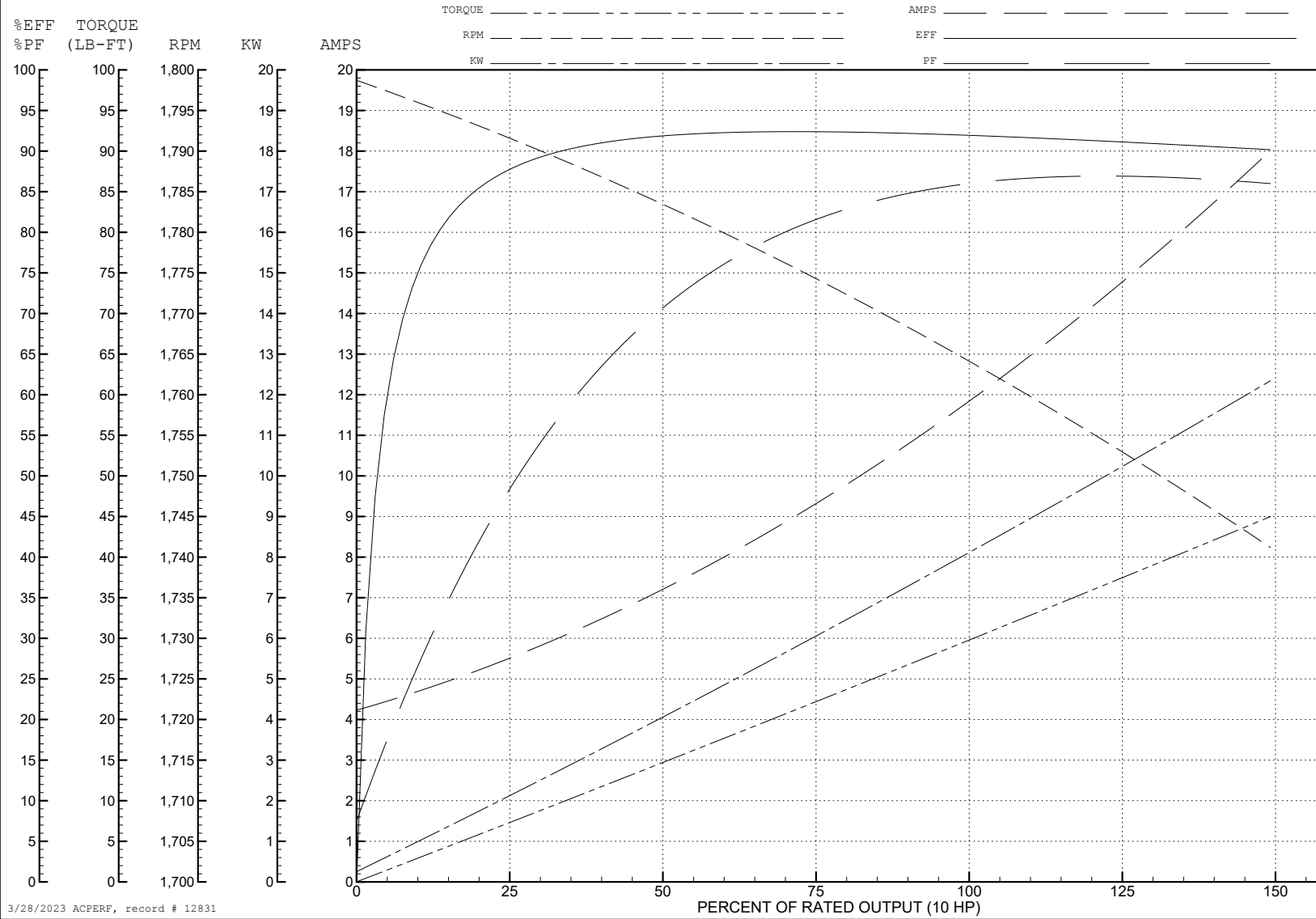
ABB Motors and Mechanical Inc.

WINDING # 39WGW632

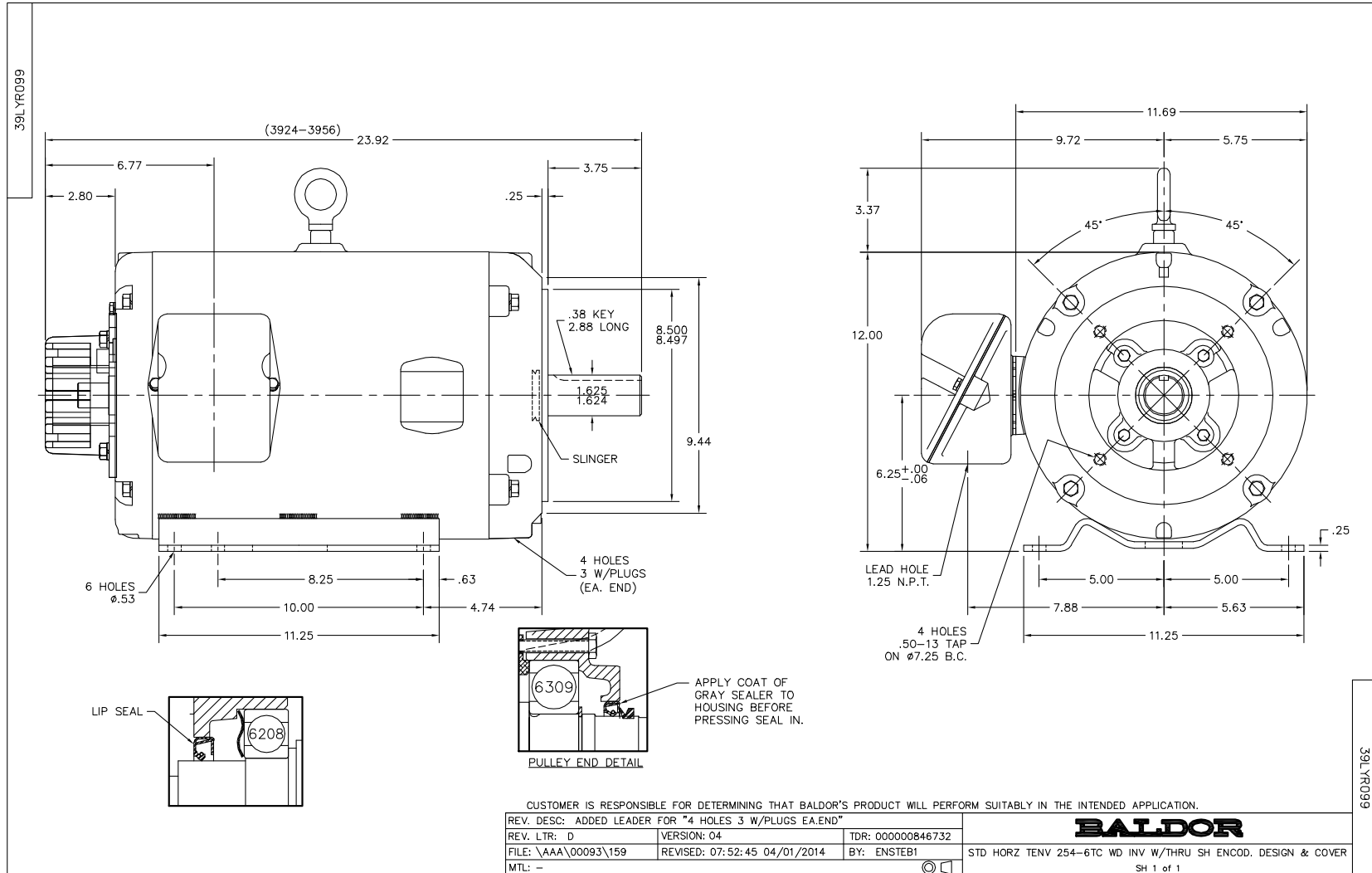
Typical performance - not guaranteed values.

10 HP 3 PH 60 HZ 1765 RPM 460 V 3956M

TORQUES (LB-FT): PO=114 PU=41.5 LR=58 LRA=87



3/28/2023 ACPERF, record # 12831



CD0005

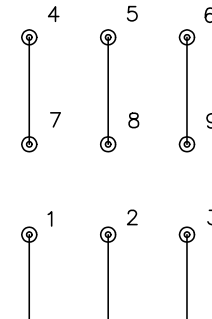


LOW VOLTAGE  
(2Y)



LINE

HIGH VOLTAGE  
(1Y)



LINE

**NOTES:**

1. INTERCHANGE ANY TWO LINE LEADS TO REVERSE ROTATION.
2. OPTIONAL THERMOSTATS ARE PROVIDED WHEN SPECIFIED.
3. ACTUAL NUMBER OF INTERNAL PARALLEL CIRCUITS MAY BE A MULTIPLE OF THOSE SHOWN ABOVE.
4. LEAD COLORS ARE OPTIONAL. LEADS MUST ALWAYS BE NUMBERED AS SHOWN.

CD0005

REV. DESC: REVISE TO SHOW OPTIONAL COLORS			
REV. LTR: E	BY: JLP	REVISED: 01/19/99 10:15	TDR: 0171435
S00000		FILE: AAA00005140	MDL: -
		MTL: -	

**BALDOR ELECTRIC Co.**

3PH, DV, 9 LEADS