

# ABB BALDOR RELIANCE III

---

## Customer information packet

### IDVSNM3587T

2HP, 1755RPM, 3PH, 60HZ, 143TC, 0534M, TENV, F1

Class - None

Division - Not Applicable

**Specifications**

<b>Enclosure</b>	TENV
<b>Frame</b>	145TC
<b>Frame Material</b>	Iron
<b>Frequency</b>	60.00 Hz
<b>Haz Area Class and Group</b>	None
<b>Haz Area Division</b>	Not Applicable
<b>Motor Letter Type</b>	Three Phase
<b>Output @ Frequency</b>	2.000 HP @ 60 HZ
<b>Phase</b>	3
<b>Synchronous Speed @ Frequency</b>	1800 RPM @ 60 HZ
<b>Voltage @ Frequency</b>	230.0 V @ 60 HZ 460.0 V @ 60 HZ
<b>Agency Approvals</b>	CSA UR
<b>Ambient Temperature</b>	40 °C
<b>Auxiliary Box</b>	NO AUXILLARY BOX
<b>Auxiliary Box Lead Termination</b>	None
<b>Base Indicator</b>	Rigid
<b>Bearing Grease Type</b>	Polyrex EM (-20F +300F)
<b>Blower</b>	None
<b>Current @ Voltage</b>	5.400 A @ 230.0 V 2.700 A @ 460.0 V
<b>Design Code</b>	B
<b>Drip Cover</b>	No Drip Cover
<b>Duty Rating</b>	CONT
<b>Efficiency @ 100% Load</b>	86.5 %
<b>Electrically Isolated Bearing</b>	Not Electrically Isolated
<b>Feedback Device</b>	NO FEEDBACK
<b>Front Shaft Indicator</b>	None
<b>Heater Indicator</b>	No Heater
<b>High Voltage Full Load Amps</b>	2.7 a
<b>Insulation Class</b>	F

**Part Detail**

<b>Revision</b>	B
<b>Type</b>	AC
<b>Mech. spec.</b>	05E534
<b>Base</b>	
<b>Status</b>	PRD/A
<b>Elec. spec.</b>	05WGX544
<b>Layout</b>	05LYE534
<b>Eff. date</b>	09-30-2025
<b>CD Diagram</b>	CD0005
<b>Poles</b>	04
<b>Leads</b>	9#18
<b>Proprietary</b>	False
<b>Created date</b>	03-11-2022

<b>Inverter Code</b>	Inverter Ready
<b>KVA Code</b>	M
<b>Lifting Lugs</b>	Standard Lifting Lugs
<b>Locked Bearing Indicator</b>	Locked Bearing
<b>Max Speed</b>	5500 rpm
<b>Motor Lead Quantity/Wire Size</b>	9 @ 18 AWG
<b>Motor Lead Termination</b>	Flying Leads
<b>Motor Standards</b>	NEMA
<b>Motor Type</b>	0534M
<b>Mounting Arrangement</b>	F1
<b>Number of Poles</b>	4
<b>Overall Length</b>	14.65 IN
<b>Power Factor</b>	79
<b>Product Family</b>	General Purpose
<b>Pulley End Bearing Type</b>	Ball
<b>Pulley Face Code</b>	C-Face
<b>Pulley Shaft Indicator</b>	Standard
<b>Rodent Screen</b>	None
<b>Service Factor</b>	1.00
<b>Shaft Diameter</b>	0.875 IN
<b>Shaft Ground Indicator</b>	No Shaft Grounding
<b>Shaft Rotation</b>	Reversible
<b>Shaft Slinger Indicator</b>	No Slinger
<b>Speed</b>	1755 rpm
<b>Speed Code</b>	Single Speed
<b>Starting Method</b>	Direct on line
<b>Thermal Device - Bearing</b>	None
<b>Thermal Device - Winding</b>	Normally Closed Thermostat
<b>Vibration Sensor Indicator</b>	No Vibration Sensor
<b>Winding Thermal 1</b>	None
<b>Winding Thermal 2</b>	None

**Nameplate**

<b>NP4564L</b>			
<b>CAT.NO.</b>	IDVSNM3587T		
<b>SPEC.</b>	05E534X544G2		
<b>FRAME</b>	145TC	<b>H.P.</b>	2
<b>VOLTS</b>	230/460		
<b>MAG. CUR.</b>	3.08/1.54	<b>F.L. AMPS</b>	5.4/2.7
<b>R.P.M.</b>	1755	<b>R.P.M. MAX</b>	5500
<b>HZ.</b>	60	<b>PH.</b>	3 <b>CLASS</b> F
<b>SER.F.</b>	1.00	<b>SL HZ</b>	1.37
<b>NEMA NOM. EFF.</b>	86.5	<b>WK2</b>	0.245
<b>RATING</b>	40C AMB-CONT		<b>ENCL</b> TENV
<b>DE</b>	6205	<b>ODE</b>	6203
<b>CC</b>	010A <b>SN</b>		
	1000:1 CT/VT		

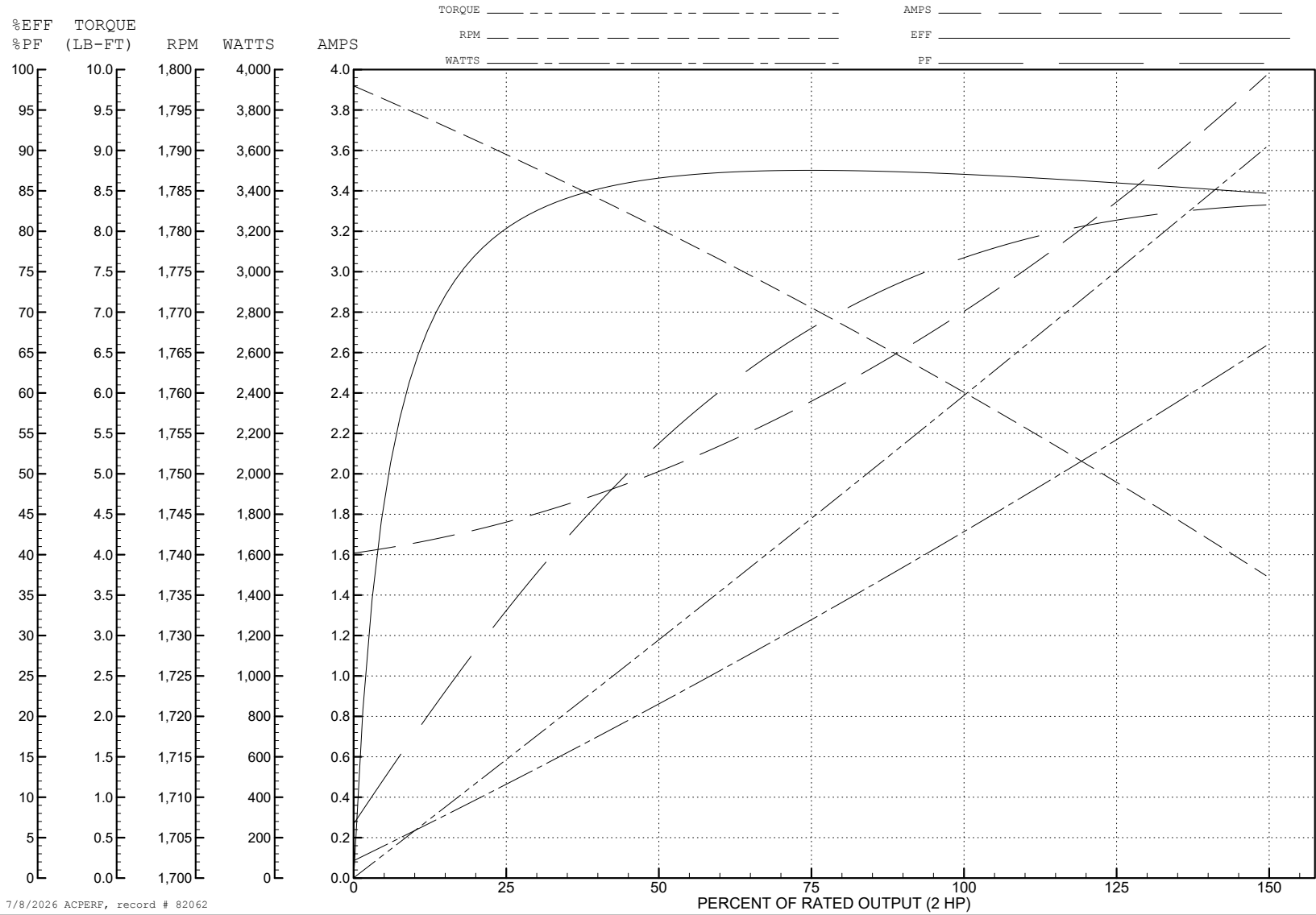
ABB Motors and Mechanical Inc.

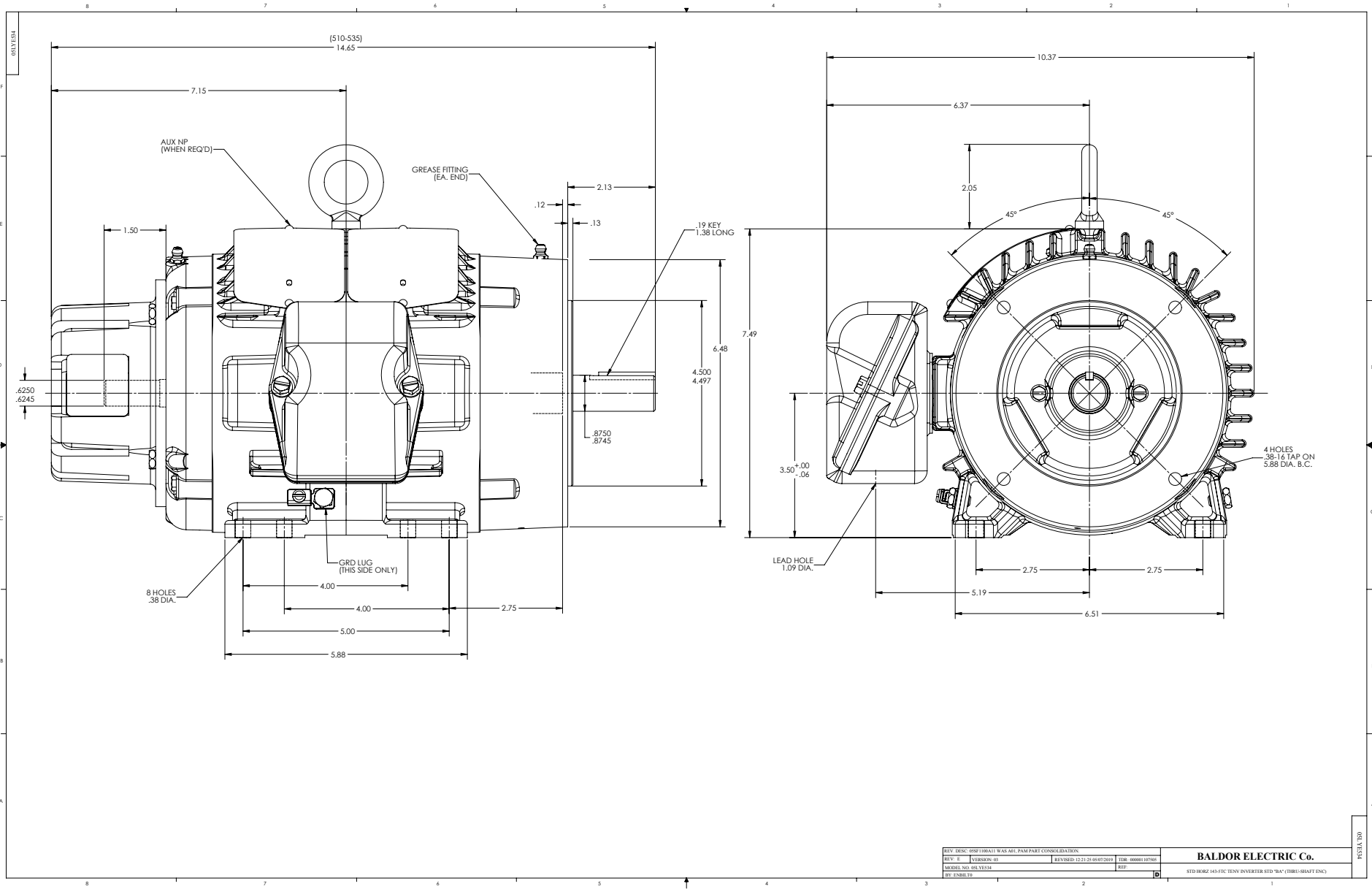
WINDING # 05WGX544

Typical performance - not guaranteed values.

2 HP 3 PH 60 HZ 1755 RPM 460 V 0534M

TORQUES (LB-FT): PO=25.1 PU=15.5 LR=19.7 LRA=27.1





REV. DESC: 000/000/000 WAS NOT PAM PARY CONSULTATION		REVISED: 12/21/22 05/07/2019		ID: 00000107502	<b>BALDOR ELECTRIC Co.</b> STD 100RZ 143-5TC TENV INVERTER STD "M" (TBB)-SHAFT ENC
REV. E	INTERSON: 01	REVISED: 12/21/22 05/07/2019	ID: 00000107502		
MODEL NO. 05E534		REF			
BY: ENB119					

CD0005



LOW VOLTAGE  
(2Y)



LINE

HIGH VOLTAGE  
(1Y)



LINE

**NOTES:**

1. INTERCHANGE ANY TWO LINE LEADS TO REVERSE ROTATION.
2. OPTIONAL THERMOSTATS ARE PROVIDED WHEN SPECIFIED.
3. ACTUAL NUMBER OF INTERNAL PARALLEL CIRCUITS MAY BE A MULTIPLE OF THOSE SHOWN ABOVE.
4. LEAD COLORS ARE OPTIONAL. LEADS MUST ALWAYS BE NUMBERED AS SHOWN.

CD0005

REV. DESC: REVISE TO SHOW OPTIONAL COLORS

REV. LTR: E BY: JLP REVISED: 01/19/99 10:15 TDR: 0171435

900000

FILE: AAA00005140

MDL: -

MTL: -

**BALDOR ELECTRIC Co.**

3PH, DV, 9 LEADS