

BALDOR • RELIANCE

Customer information packet

IDVSNM2237T-5

7.5HP, 1770RPM, 3PH, 60HZ, 0748M, N

Class - None

Division - Not Applicable

Copyright © All product information within this document is subject to ABB Motors and Mechanical Inc. copyright © protection, unless otherwise noted.

8/11/2024 4:51:39 AM

Specifications

Enclosure	TENV
Frame	213TC
Frame Material	Iron
Frequency	60.00 Hz
Haz Area Class and Group	None
Haz Area Division	Not Applicable
Motor Letter Type	Three Phase
Output @ Frequency	7.500 HP @ 60 HZ
Phase	3
Synchronous Speed @ Frequency	1800 RPM @ 60 HZ
Voltage @ Frequency	575.0 V @ 60 HZ
Agency Approvals	UR CSA
Ambient Temperature	40 °C
Auxillary Box	No Auxillary Box
Auxillary Box Lead Termination	None
Base Indicator	Rigid
Bearing Grease Type	Polyrex EM (-20F +300F)
Blower	None
Current @ Voltage	7.800 A @ 575.0 V
Design Code	B
Drip Cover	No Drip Cover
Duty Rating	CONT
Efficiency @ 100% Load	91.7 %
Electrically Isolated Bearing	Not Electrically Isolated
Feedback Device	NO FEEDBACK
Front Shaft Indicator	No Key Or Flat
Heater Indicator	No Heater
High Voltage Full Load Amps	7.8 a
Insulation Class	H
Inverter Code	Inverter Duty
KVA Code	H

Part detail

Revision	-
Type	AC
Mech. spec.	07M290
Base	
Status	PRD/A
Elec. spec.	07WGY729
Layout	07LYM290
Eff. date	11-20-2020
CD Diagram	CD0006
Poles	04
Leads	3#14
Proprietary	False
Created date	11-19-2020

Lifting Lugs	Standard Lifting Lugs
Locked Bearing Indicator	Locked Bearing
Max Speed	2700 rpm
Motor Lead Quantity/Wire Size	3 @ 14 AWG
Motor Lead Termination	Flying Leads
Motor Standards	NEMA
Motor Type	0748M
Mounting Arrangement	F1
Number of Poles	4
Overall Length	20.86 IN
Power Factor	83
Product Family	General Purpose
Pulley End Bearing Type	Ball
Pulley Face Code	C-Face
Pulley Shaft Indicator	Standard
Rodent Screen	None
RoHS Status	ROHS COMPLIANT
Service Factor	1.00
Shaft Diameter	1.375 IN
Shaft Ground Indicator	No Shaft Grounding
Shaft Rotation	Reversible
Shaft Slinger Indicator	No Slinger
Speed	1770 rpm
Speed Code	Single Speed
Starting Method	Direct on line
Thermal Device - Bearing	None
Thermal Device - Winding	Normally Closed Thermostat
Vibration Sensor Indicator	No Vibration Sensor
Winding Thermal 1	None
Winding Thermal 2	None

Nameplate

NP3301L			
CAT NO	IDVSNM2237T-5		
SPEC.	07M290Y729G1		
FRAME	213TC	HP	7.5 TE
VOLTS	575		
MAG CUR	4	FLA	7.8
RPM	1770	RPM MAX	2700
HZ	60	PH	3 CLASS H
SER.F.	1.00	SL HZ	1
NEMA-NOM-EFF	91.7	WK2	1.18
RATING	40C AMB-CONT		
DE BRG	6307	ODE BRG	6206
CC	SN		
	1.5:1 CHP PWM		

AC Induction Motor Performance Data

Record # 85520

Typical performance - not guaranteed values

Winding: 07WGY729-R046		Type: 0748M	Enclosure: TENV		
Nameplate Data		575 V, 60 Hz: Single Voltage Motor			
Rated Output (HP)	7.5	Full Load Torque	22.19 LB-FT		
Volts	575	Start Configuration	direct on line		
Full Load Amps	7.8	Breakdown Torque	81.16 LB-FT		
R.P.M.	1770	Pull-up Torque	36.51 LB-FT		
Hz	60 Phase	3	Locked-rotor Torque	56.02 LB-FT	
NEMA Design Code	B	KVA Code	H	Starting Current	66.94 A
Service Factor (S.F.)	1	No-load Current	4 A		
NEMA Nom. Eff.	91.7	Power Factor	83	Line-line Res. @ 25°C	1.68 Ω
Rating - Duty	40C	AMB-CONT	Temp. Rise @ Rated Load	74°C	
			Locked-rotor Power Factor	35.4	
			Rotor inertia	1.18 lb-ft ²	

Load Characteristics 575 V, 60 Hz, 7.5 HP

% of Rated Load	25	50	75	100	125	150
Power Factor	37	58	71	77	81	83
Efficiency	86.4	91.3	92.4	92.3	91.9	91.1
Speed	1793	1787	1780	1773	1767	1758
Line amperes	4.37	5.22	6.44	7.84	9.42	11.15

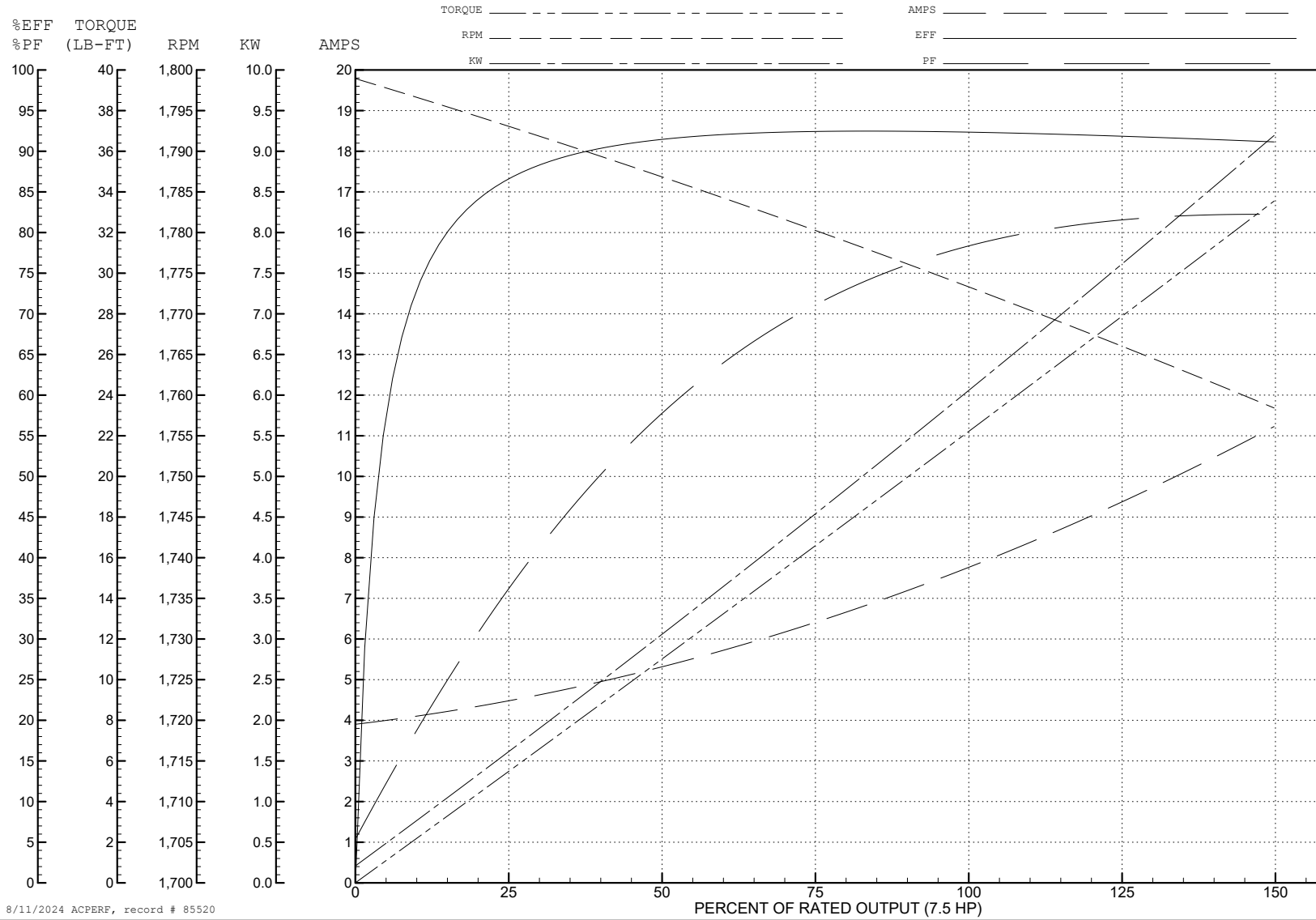
ABB Motors and Mechanical Inc.

WINDING # 07WGY729

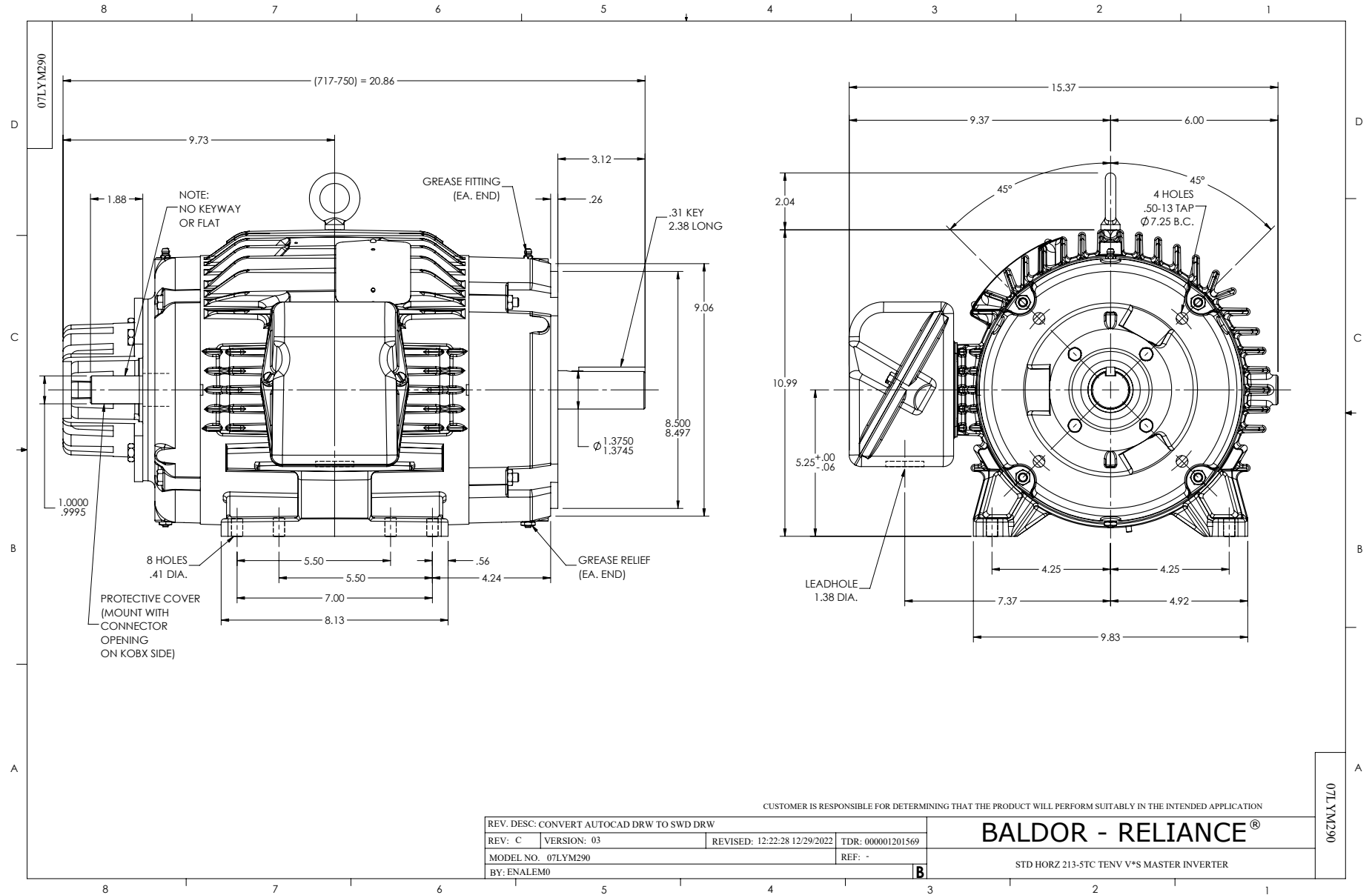
Typical performance - not guaranteed values.

7.5 HP 3 PH 60 HZ 1770 RPM 575 V 0748M

TORQUES (LB-FT): PO=81.16 PU=36.51 LR=56.02 LRA=66.94



8/11/2024 ACPERF, record # 85520



CD0006



NOTES:

1. THREE LEAD MOTOR MAY BE EITHER WYE CONNECTED OR DELTA CONNECTED.
2. INTERCHANGE ANY TWO LINE LEADS TO REVERSE ROTATION.
3. OPTIONAL THERMOSTATS ARE PROVIDED WHEN SPECIFIED.
4. ACTUAL NUMBER OF INTERNAL PARALLEL CIRCUITS MAY VARY.
5. LEAD COLORS ARE OPTIONAL. LEADS MUST BE NUMBERED AS SHOWN.

CD0006

REV. DESC: ADD CLASS CONN00000007		
REV. LTR: E	VERSION: 01	TDR: 000001099922
FILE: \AAA\00005\141	REVISED: 10:24:49 02/19/2019	BY: ENBRIRO
MTL: -	© □	

BALDOR - RELIANCE®

3PH, SV, 3 LEADS, WYE OR DELTA CONNECTED

SH 1 of 1