

ABB BALDOR RELIANCE III

Customer information packet

IDVSM4410T-4

125HP, 1790-2685RPM, 3PH, 60-90HZ, 444T, A440

Class - None

Division - Not Applicable

Specifications

Enclosure	TEFC
Frame	444T
Frame Material	Iron
Frequency	60.00 Hz 90.00 Hz
Haz Area Class and Group	None
Haz Area Division	Not Applicable
Motor Letter Type	Three Phase
Output @ Frequency	125.000 HP @ 90 HZ 125.000 HP @ 60 HZ
Phase	3
Synchronous Speed @ Frequency	1800 RPM @ 60 HZ
Voltage @ Frequency	460.0 V @ 60 HZ 460.0 V @ 90 HZ
Agency Approvals	CCSA US
Ambient Temperature	40 °C
Auxiliary Box	NO AUXILLARY BOX
Base Indicator	Rigid
Bearing Grease Type	Polyrex EM (-20F +300F)
Constant Torque Speed Range	1000:1
Current @ Voltage	140.000 A @ 460.0 V 150.000 A @ 460.0 V
Design Code	A
Drip Cover	No Drip Cover
Duty Rating	CONT
Feedback Device	NO FEEDBACK
Heater Indicator	No Heater
High Voltage Full Load Amps	140.0 a
Insulation Class	F
Inverter Code	Inverter Duty
KVA Code	M
Lifting Lugs	Standard Lifting Lugs

Part Detail

Revision	L
Type	AC
Mech. spec.	
Base	
Status	PRD/A
Elec. spec.	A44WG0911
Layout	617435-164
Eff. date	09-25-2025
CD Diagram	416820-036
Poles	04
Leads	3#1/0
Proprietary	False
Created date	08-23-2012

Max Speed	3600 rpm
Motor Lead Quantity/Wire Size	3 @ 1/0 AWG
Motor Standards	NEMA
Motor Type	A44062M
Mounting Arrangement	F1
Number of Poles	4
Overall Length	44.75 IN
Product Family	Other
Pulley End Bearing Type	Ball
Pulley Face Code	Standard
Service Factor	1.00
Shaft Ground Indicator	No Shaft Grounding
Shaft Rotation	Reversible
Shaft Slinger Indicator	No Slinger
Speed	1790 rpm 2685 rpm
Speed Code	Single Speed
Starting Method	Direct on line
Thermal Device - Bearing	None
Thermal Device - Winding	Normally Closed Thermostat

Nameplate

000613007HV

CAT NO	IDVSM4410T-4	SPEC NO.	P44G4008					
SER.NO.		FRAME	444T					
	HP	RPM	VOLTS	AMPS	HZ	TYPE	P	
BASE	125	1790	460	150	60	SF	1.00	
MAX	125	2685	460	140	90	INSUL.CLASS	F	
DRIVE END BEARING	90BC03J30X	CONSTANT TORQUE		DUTY	CONT	AMB	40	
OPP D.E. BEARING	6318C3VL0241	1000:1	ENCL	TEFC	PHASE	3		
DESIGN NO.	A44WG0911-R003	FLUX AMPS	62.1		VPWM INVERTER READY			
MAX SPEED/RPM	3600	OVERTEMP PROT	2	WK2	40.0	POLES	4	WEIGHT

REL S.O.	-	VOLTS	460	ENCLOSURE	TEFC	WYE CONN EQ CKT OHMS PER PHASE			
FRAME	444T	AMPS	150	MAX SAFE RPM	3600	(AT BASE RATING, 25 °C)			
HP	125	DUTY	CONT	IM (AMPS)	62.1	R1	.0136	X1	.134
BASE SPEED	1790	S.F.	1.00	P.F. @NL/FL	7.2/82.1	R2	.00939	X2	.109
PHASE/HERTZ	3/60	AMB °C/INSUL	40/F	WK ² (Lb-Ft ²)	40.99			XM	3.58

RATED FULL LOAD DATA

	RPM	HP	TORQUE LB-FT	FUND VOLTS	FREQ-HZ	AMPS
BASE SPEED	1790	125	367	460	60	150
MAX SPEED	2684	125	244	460	90	140
MIN SPEED	0	0	367	7.80	.342	150

LOAD PERFORMANCE AT BASE SPEED

	RPM	HP	TORQUE LB-FT	FUND VOLTS	FREQ-HZ	AMPS
NO LOAD	1800	0	0	460	60	62.1
1/4	1797	31.3	92	460	60	80.4
1/2	1795	62.6	183	460	60	99.1
3/4	1792	93.8	275	460	60	124
FULL LOAD	1790	125	367	460	60	150
O/L	1779	249	734	460	60	274

**BLOWER
DATA**

VOLTS	PH/HZ	FL AMPS	LR AMPS	FRAME	CFM

REMARKS: TYPICAL DATA
VECTOR PWM INVERTER DUTY

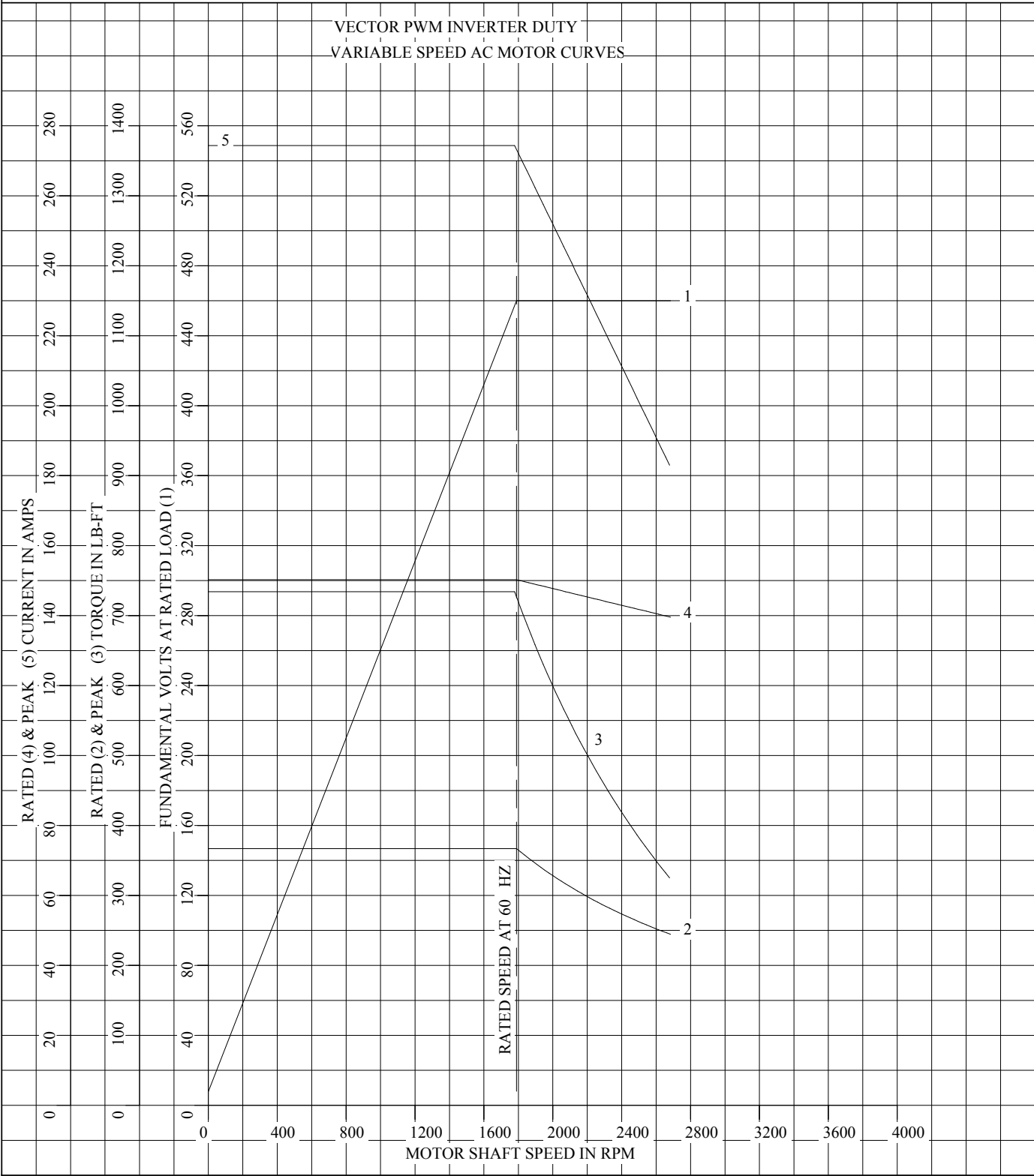


DR. BY M. ORDERS
CK. BY J. TSAO
APP. BY J. TSAO
DATE 06/15/04

**A-C MOTOR
PERFORMANCE DATA** A44WG0911-R003
ISSUE DATE 12/21/10

REL S.O.	-	VOLTS	460	ENCLOSURE	TEFC	WYE CONN EQ CKT OHMS PER PHASE	
FRAME	444T	AMPS	150	MAX SAFE RPM	3600	(AT BASE RATING, 25 °C)	
HP	125	DUTY	CONT	IM (AMPS)	62.1	R1	.0136 X1 .134
BASE SPEED	1790	S.F.	1.00	P.F. @NL/FL	7.2/82.1	R2	.00939 X2 .109
PHASE/HERTZ	3/60	AMB °C/INSUL	40/F	WK ² (Lb-Ft ²)	40.99		XM 3.58

VECTOR PWM INVERTER DUTY
VARIABLE SPEED AC MOTOR CURVES



REMARKS: TYPICAL DATA
DATA VALID FOR NAMEPLATE SPEED RANGE ONLY



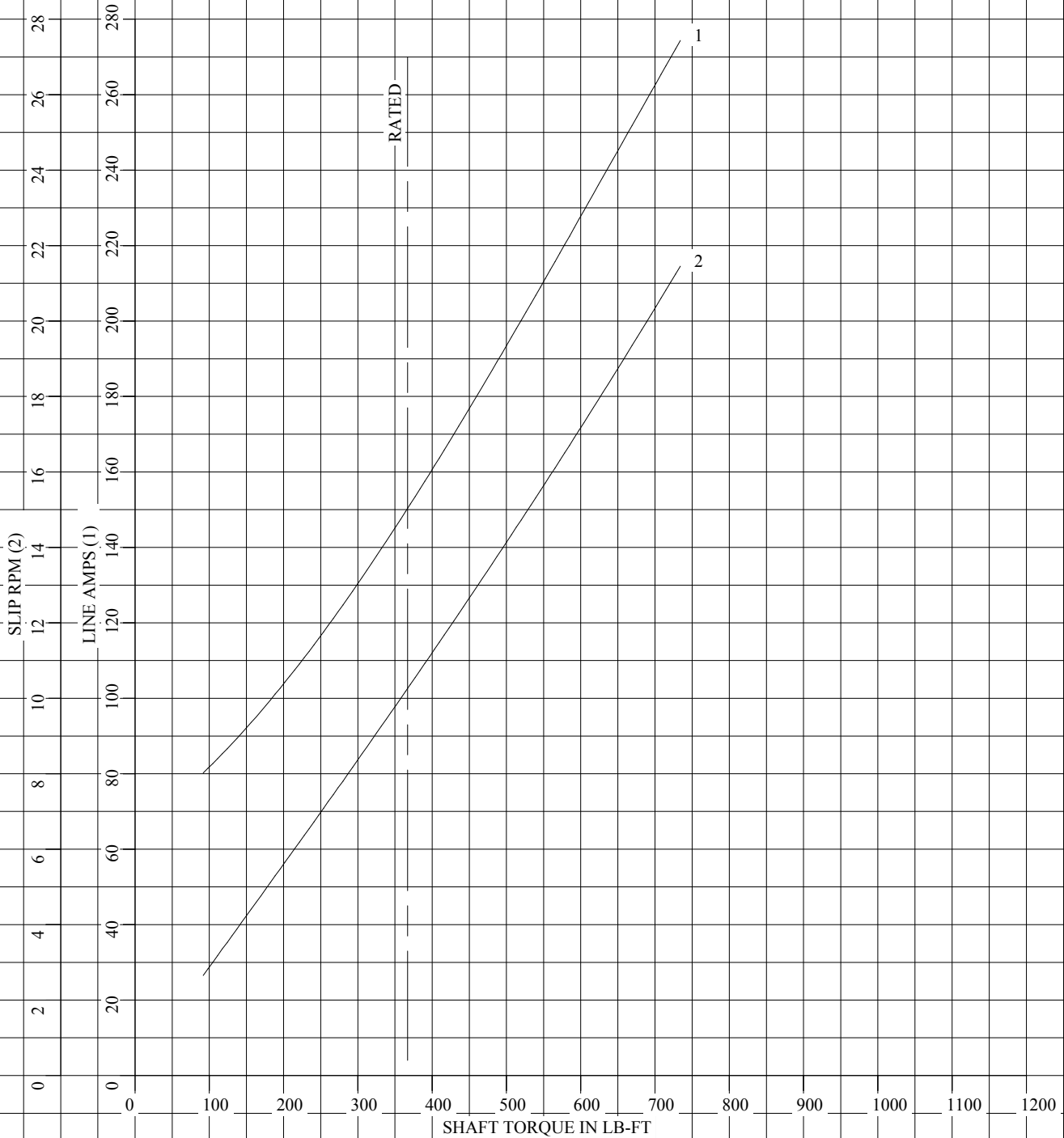
DR. BY M. ORDERS
CK. BY J. TSAO
APP. BY J. TSAO
DATE 06/15/04

**A-C MOTOR
PERFORMANCE
CURVES**

A44WG0911-R003
SH 1 OF 2
ISSUE DATE 12/21/10

REL S.O.	-	VOLTS	460	ENCLOSURE	TEFC	WYE CONN EQ CKT OHMS PER PHASE	
FRAME	444T	AMPS	150	MAX SAFE RPM	3600	(AT BASE RATING, 25 °C)	
HP	125	DUTY	CONT	IM (AMPS)	62.1	R1 .0136	X1 .134
BASE SPEED	1790	S.F.	1.00	P.F. @NL/FL	7.2/82.1	R2 .00939	X2 .109
PHASE/HERTZ	3/60	AMB °C/INSUL	40/F	WK ² (Lb-Ft ²)	40.99		XM 3.58

VECTOR PWM INVERTER DUTY
LOAD PERFORMANCE (CONSTANT V/HZ RANGE)

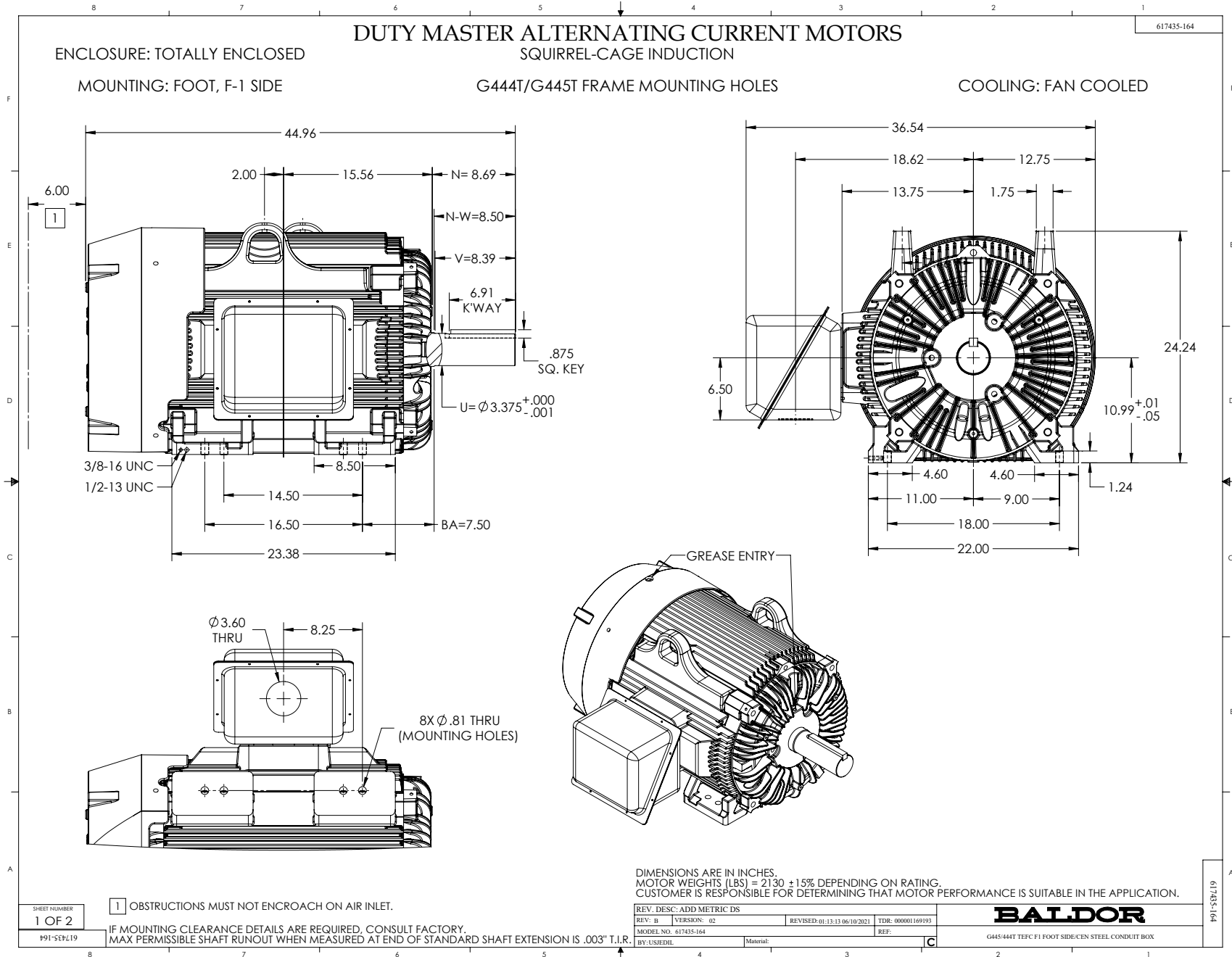


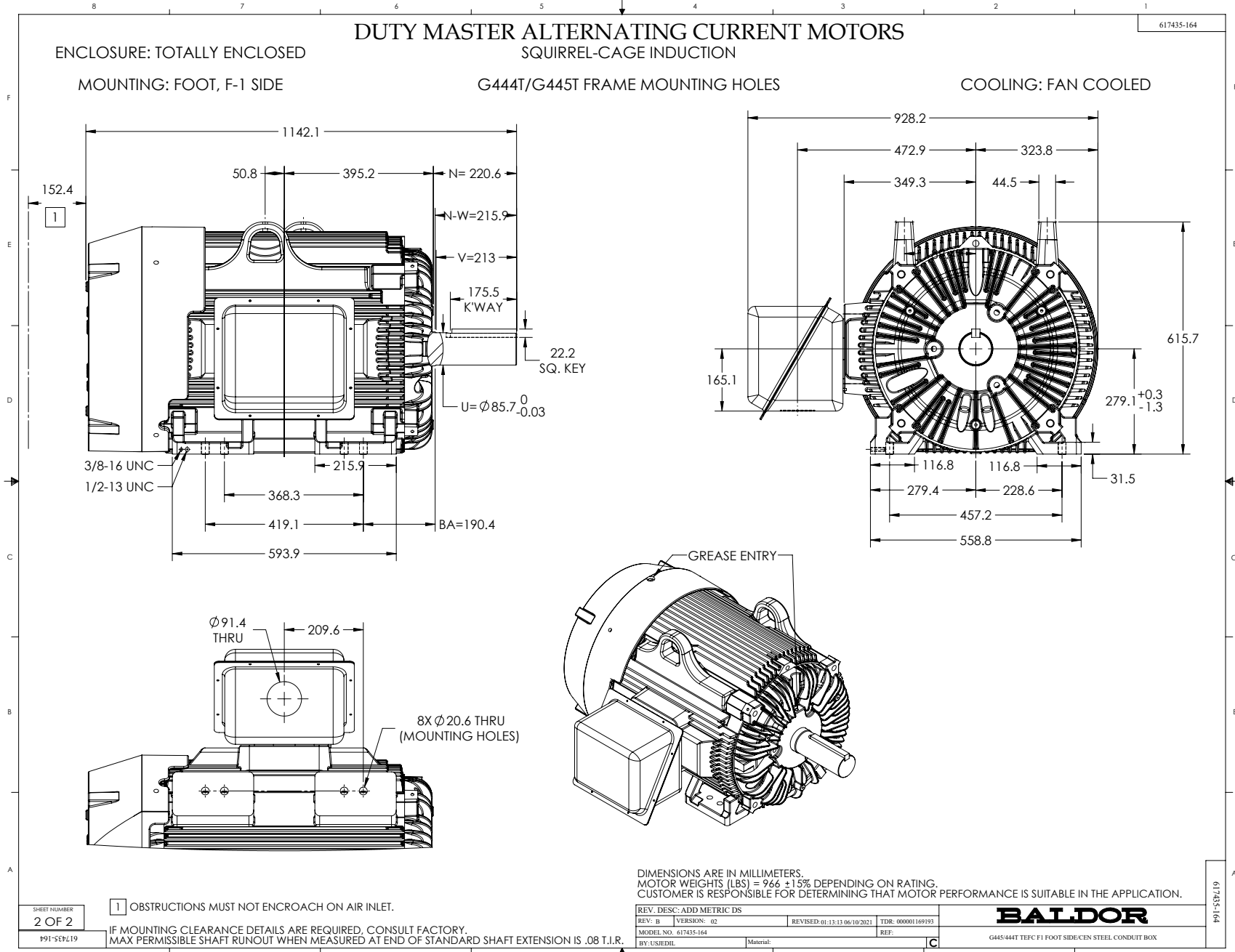
REMARKS: TYPICAL DATA
DATA VALID FOR NAMEPLATE SPEED RANGE ONLY



DR. BY M. ORDERS
CK. BY J. TSAO
APP. BY J. TSAO
DATE 06/15/04

**A-C MOTOR
PERFORMANCE
CURVES** A44WG0911-R003
SH 2 OF 2
ISSUE DATE 12/21/10





416820-036

**A-C MOTOR
CONNECTION DIAGRAM
STANDARD 3 LEAD CONNECTED**



(N.P. 1575-BA)

REV. DESC: LOADED TO BUS, C/R 335225		
REV. LTR: -	VERSION: 00	TDR: 000000538207
FILE: \MGA\00000\682	REVISED: 11:54:06 04/30/2010	
MTL: -	BY: RAGRA	

BALDOR

CONN DIAG - STANDARD 3 LEAD
SH 1 of 1

416820-036